

# FOR LEASE FORMER DEL MAR DISTRIBUTING

**ADAME**  
COMMERCIAL  
REAL ESTATE SOLUTIONS

6000 YORKTOWN BLVD. | CORPUS CHRISTI, TX 78411



## PROPERTY DESCRIPTION

Very rare prime tilt wall industrial warehouse located on the southside of Corpus Christi. High ceiling with 20' x 40' column spacing. Landlord will divide to minimum of 8,000 SF. Ideal for distribution, storage or manufacturing. Large yard up to 5 acres. Call for appointment.

## LEGAL DESC.:

FLOUR BLUFF & ENC FRM GDN TRACT, BLOCK 10, LOT 12, ACRES 2.277  
FLOUR BLUFF & ENC FRM GDN TRACT, BLOCK 10, LOT 12, ACRES 2.928

## PROPERTY HIGHLIGHTS

- Southside Location
- Large Yard
- Tilt Wall Construction

**MARK ADAME, CCIM, SIOR**  
mark@joeadame.com  
O: 361.880.5888  
C: 361.813.7245

## OFFERING SUMMARY

Lease Rate:	\$9.00 SF/yr (NNN)
Available SF:	32,099 SF
Office SF:	5,384 SF
Warehouse SF:	26,715 SF
Lot Size:	5.2 Acres
Building Size:	32,099 SF

JOEADAME.COM

FOR LEASE FORMER DEL MAR DISTRIBUTING

**ADAME**  
COMMERCIAL  
REAL ESTATE SOLUTIONS

6000 YORKTOWN BLVD. | CORPUS CHRISTI, TX 78411



MARK ADAME, CCIM, SIOR  
mark@joeadame.com  
O: 361.880.5888  
C: 361.813.7245

JOEADAME.COM

The information contained herein has been obtained from sources we deem reliable. We have no reason to doubt its accuracy, but we do not guarantee it.

FOR LEASE FORMER DEL MAR DISTRIBUTING

6000 YORKTOWN BLVD. | CORPUS CHRISTI, TX 78411

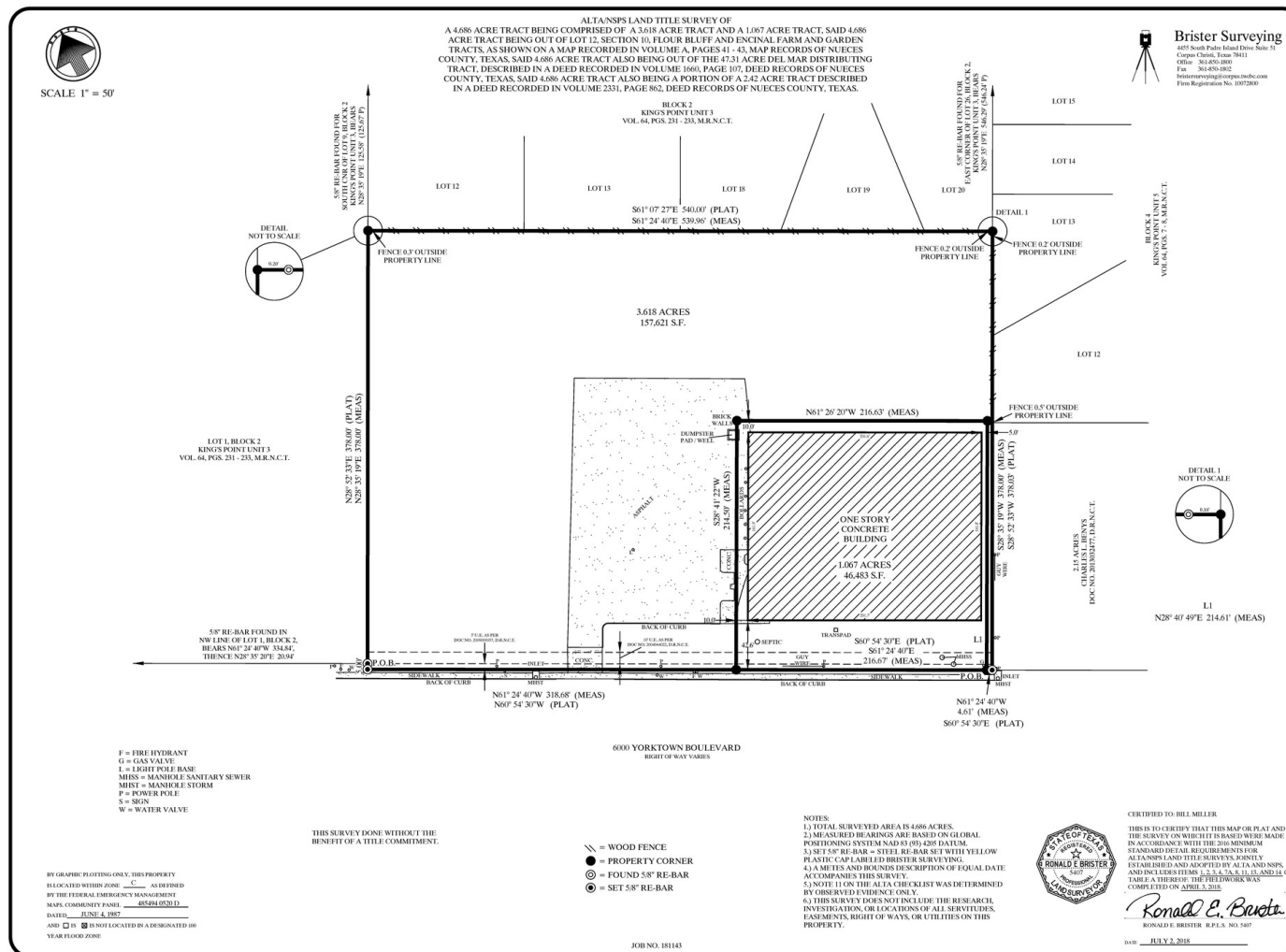


MARK ADAME, CCIM, SIOR  
mark@joeadame.com  
O: 361.880.5888  
C: 361.813.7245

# FOR LEASE FORMER DEL MAR DISTRIBUTING

# ADAME COMMERCIAL REAL ESTATE SOLUTIONS

6000 YORKTOWN BLVD. | CORPUS CHRISTI, TX 78411



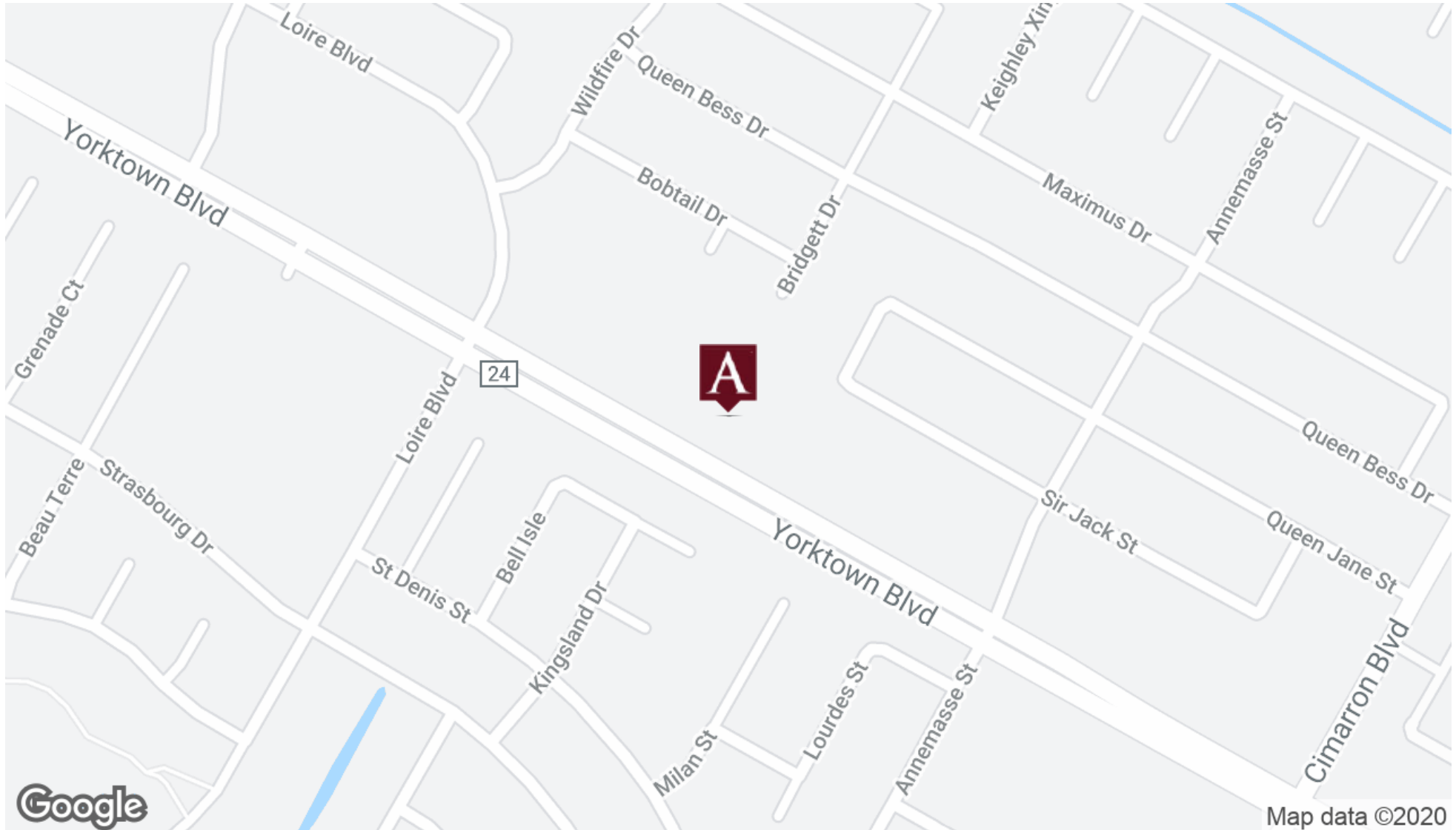
MARK ADAME, CCIM, SIOR  
 mark@joeadame.com  
 O: 361.880.5888  
 C: 361.813.7245

JOEADAME.COM

FOR LEASE FORMER DEL MAR DISTRIBUTING

**ADAME**  
COMMERCIAL  
REAL ESTATE SOLUTIONS

6000 YORKTOWN BLVD. | CORPUS CHRISTI, TX 78411



MARK ADAME, CCIM, SIOR  
mark@joeadame.com  
O: 361.880.5888  
C: 361.813.7245

JOEADAME.COM

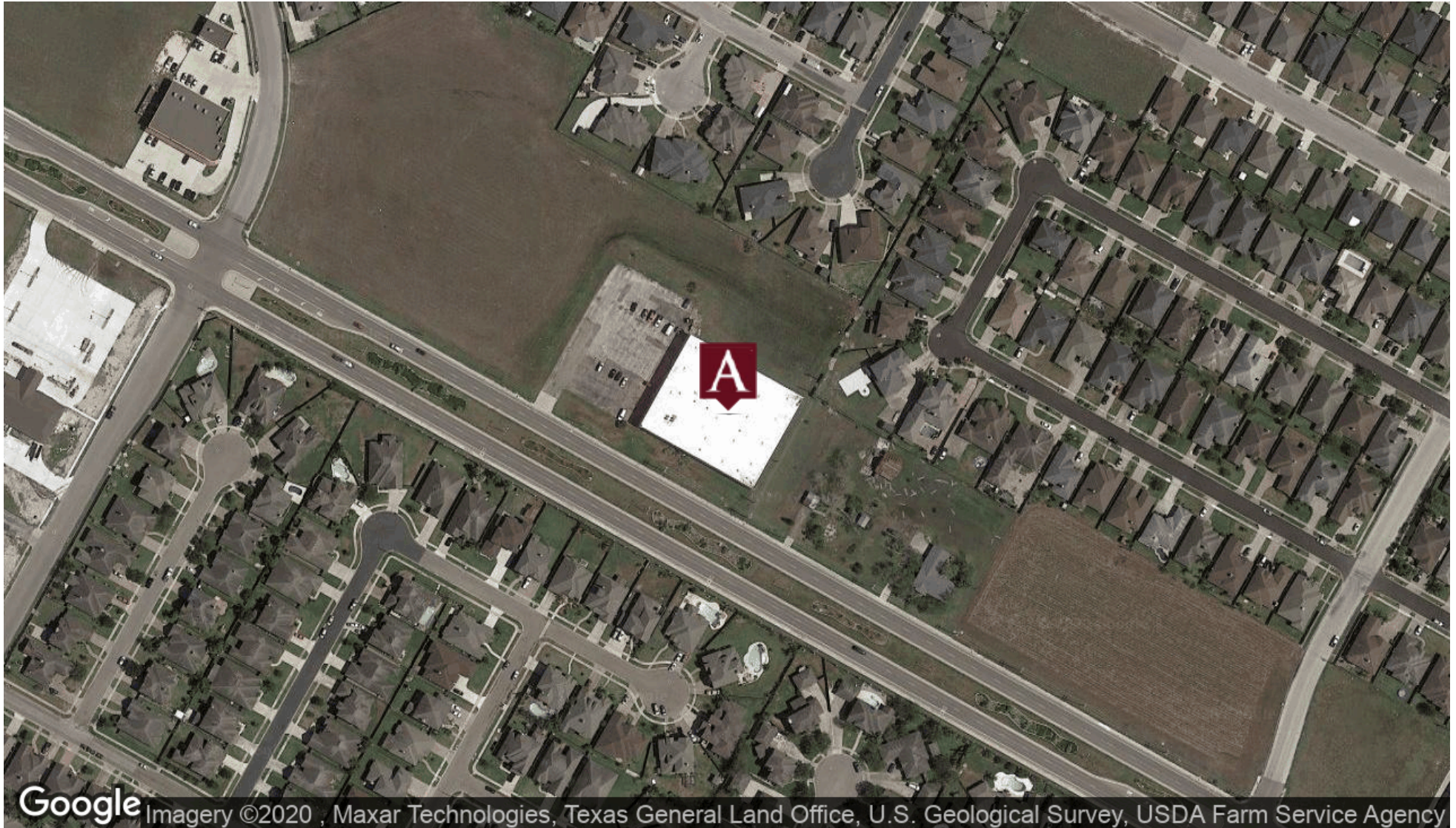
The information contained herein has been obtained from sources we deem reliable. We have no reason to doubt its accuracy, but we do not guarantee it.

FOR LEASE

FORMER DEL MAR DISTRIBUTING

**ADAME**  
COMMERCIAL  
REAL ESTATE SOLUTIONS

6000 YORKTOWN BLVD. | CORPUS CHRISTI, TX 78411



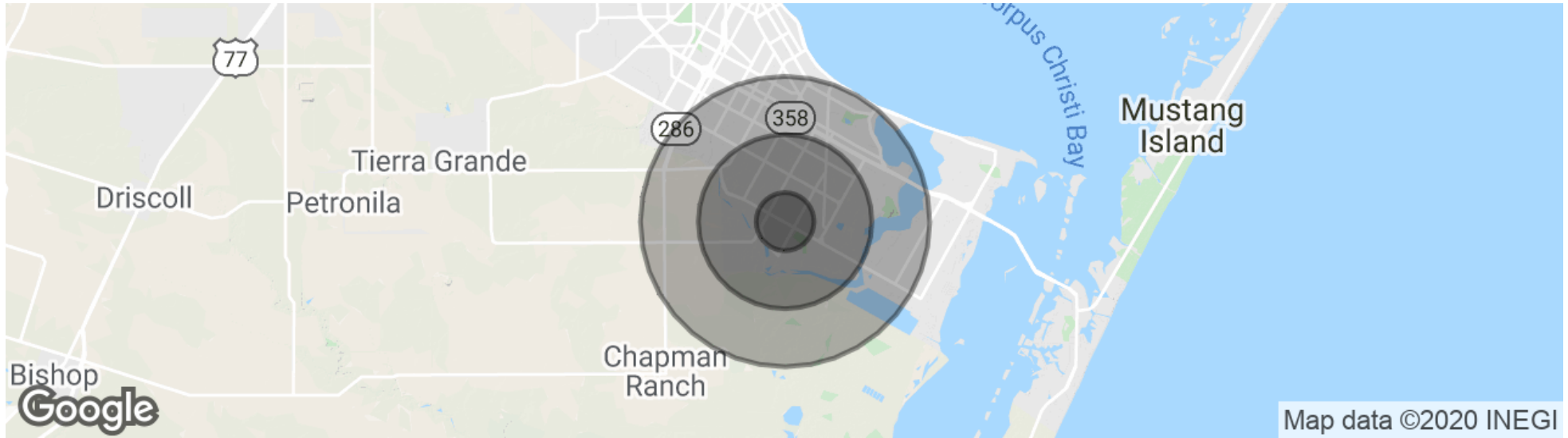
MARK ADAME, CCIM, SIOR  
mark@joeadame.com  
O: 361.880.5888  
C: 361.813.7245

JOEADAME.COM

The information contained herein has been obtained from sources we deem reliable. We have no reason to doubt its accuracy, but we do not guarantee it.

# FOR LEASE FORMER DEL MAR DISTRIBUTING

6000 YORKTOWN BLVD. | CORPUS CHRISTI, TX 78411



POPULATION	1 MILE	3 MILES	5 MILES
Total population	9,648	71,986	144,716
Median age	35.6	33.9	34.4
Median age (Male)	35.5	33.3	32.9
Median age (Female)	35.4	34.2	35.8
HOUSEHOLDS & INCOME	1 MILE	3 MILES	5 MILES
Total households	3,304	27,190	54,787
# of persons per HH	2.9	2.6	2.6
Average HH income	\$113,521	\$79,428	\$68,199
Average house value	\$277,943	\$200,488	\$175,390

\* Demographic data derived from 2010 US Census

MARK ADAME, CCIM, SIOR  
mark@joeadame.com  
O: 361.880.5888  
C: 361.813.7245

JOEADAME.COM



# Information About Brokerage Services

*Texas law requires all real estate license holders to give the following information about brokerage services to prospective buyers, tenants, sellers and landlords.*



**TYPES OF REAL ESTATE LICENSE HOLDERS:**

- **A BROKER** is responsible for all brokerage activities, including acts performed by sales agents sponsored by the broker.
- **A SALES AGENT** must be sponsored by a broker and works with clients on behalf of the broker.

**A BROKER'S MINIMUM DUTIES REQUIRED BY LAW (A client is the person or party that the broker represents):**

- Put the interests of the client above all others, including the broker's own interests;
- Inform the client of any material information about the property or transaction received by the broker;
- Answer the client's questions and present any offer to or counter-offer from the client; and
- Treat all parties to a real estate transaction honestly and fairly.

**A LICENSE HOLDER CAN REPRESENT A PARTY IN A REAL ESTATE TRANSACTION:**

**AS AGENT FOR OWNER (SELLER/LANDLORD):** The broker becomes the property owner's agent through an agreement with the owner, usually in a written listing to sell or property management agreement. An owner's agent must perform the broker's minimum duties above and must inform the owner of any material information about the property or transaction known by the agent, including information disclosed to the agent or subagent by the buyer or buyer's agent.

**AS AGENT FOR BUYER/TENANT:** The broker becomes the buyer/tenant's agent by agreeing to represent the buyer, usually through a written representation agreement. A buyer's agent must perform the broker's minimum duties above and must inform the buyer of any material information about the property or transaction known by the agent, including information disclosed to the agent by the seller or seller's agent.

**AS AGENT FOR BOTH - INTERMEDIARY:** To act as an intermediary between the parties the broker must first obtain the written agreement of *each party* to the transaction. The written agreement must state who will pay the broker and, in conspicuous bold or underlined print, set forth the broker's obligations as an intermediary. A broker who acts as an intermediary:

- Must treat all parties to the transaction impartially and fairly;
- May, with the parties' written consent, appoint a different license holder associated with the broker to each party (owner and buyer) to communicate with, provide opinions and advice to, and carry out the instructions of each party to the transaction.
- Must not, unless specifically authorized in writing to do so by the party, disclose:
  - that the owner will accept a price less than the written asking price;
  - that the buyer/tenant will pay a price greater than the price submitted in a written offer; and
  - any confidential information or any other information that a party specifically instructs the broker in writing not to disclose, unless required to do so by law.

**AS SUBAGENT:** A license holder acts as a subagent when aiding a buyer in a transaction without an agreement to represent the buyer. A subagent can assist the buyer but does not represent the buyer and must place the interests of the owner first.

**TO AVOID DISPUTES, ALL AGREEMENTS BETWEEN YOU AND A BROKER SHOULD BE IN WRITING AND CLEARLY ESTABLISH:**

- The broker's duties and responsibilities to you, and your obligations under the representation agreement.
- Who will pay the broker for services provided to you, when payment will be made and how the payment will be calculated.

**LICENSE HOLDER CONTACT INFORMATION:** This notice is being provided for information purposes. It does not create an obligation for you to use the broker's services. Please acknowledge receipt of this notice below and retain a copy for your records.

Joe Adame & Associates, Inc.	416864	joe@joeadame.com	361-880-5888
Licensed Broker /Broker Firm Name or Primary Assumed Business Name	License No.	Email	Phone
Joe Adame	145894	joe@joeadame.com	361-880-5888
Designated Broker of Firm	License No.	Email	Phone
Mark Adame	480169	mark@joeadame.com	361-880-5888
Licensed Supervisor of Sales Agent/ Associate	License No.	Email	Phone
Mark Adame	480169	mark@joeadame.com	361-880-5888
Sales Agent/Associate's Name	License No.	Email	Phone

\_\_\_\_\_  
Buyer/Tenant/Seller/Landlord Initials

\_\_\_\_\_  
Date