

CANBY INDUSTRIAL LAND

388 S Walnut St | Canby, OR 97013

FOR SALE



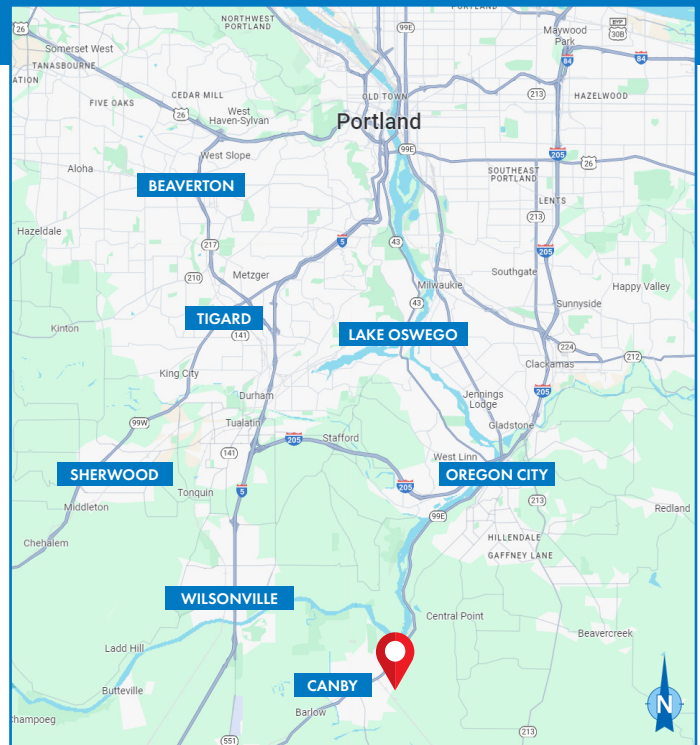
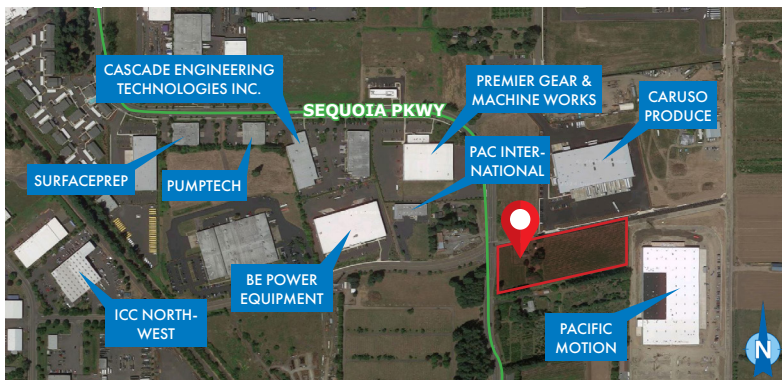
LAND FOR SALE

DETAILS

- Land area: ± 4.55 AC (198,198 SF)
- Price: \$2,235,000
- Zoning: Light Industrial (M-1)

FEATURES

- Flat topography
- On corner of Sequoia Pkwy & Walnut St



[Click here](#) for more information on Canby, OR

02.03.2025

For more information or a property tour, please contact:

GREG NESTING

503.225.8440

GregN@norris-stevens.com



Information contained herein has been obtained from others and considered to be reliable; however, a prospective purchaser or lessee is expected to verify all information to their own satisfaction.

Norris & Stevens

INVESTMENT REAL ESTATE SERVICES

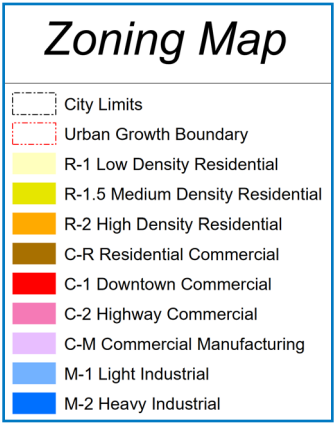
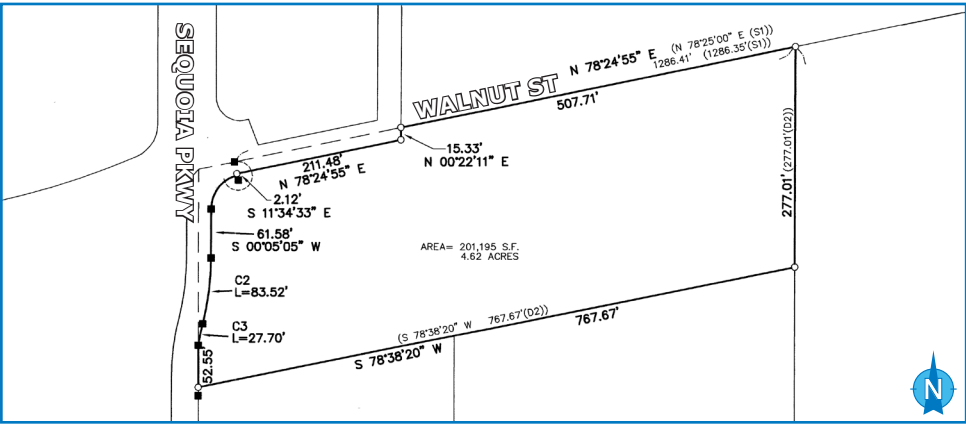
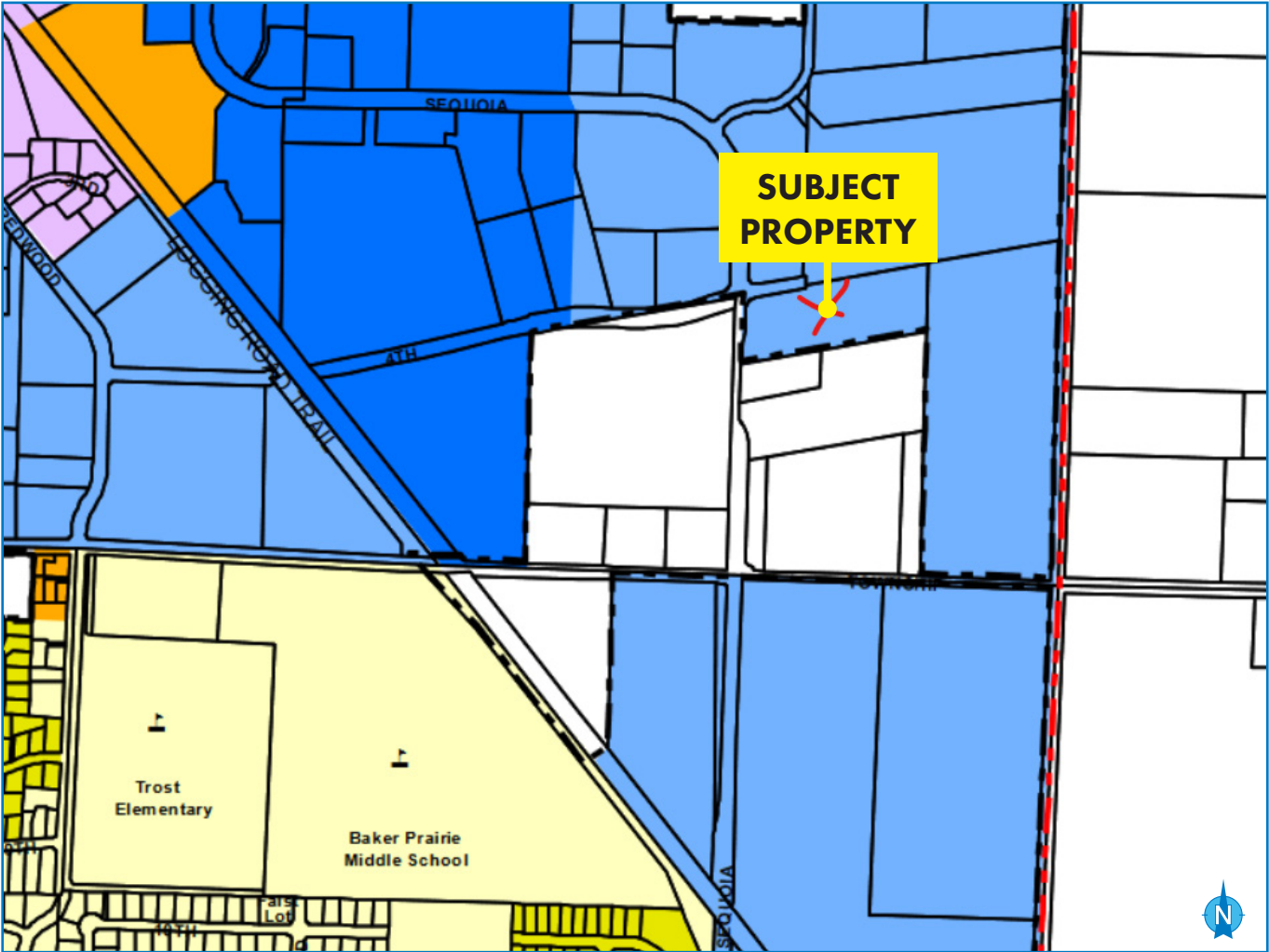
900 SW 5th Avenue • 17th Floor • Portland, OR 97204
503.223.3171 • norris-stevens.com

CANBY INDUSTRIAL LAND

388 S Walnut St | Canby, OR 97013

FOR SALE

ZONING & SITE SURVEY



For more information or a property tour, please contact:

GREG NESTING
503.225.8440
GregN@norris-stevens.com



Information contained herein has been obtained from others and considered to be reliable; however, a prospective purchaser or lessee is expected to verify all information to their own satisfaction.

Norris & Stevens

INVESTMENT REAL ESTATE SERVICES

900 SW 5th Avenue • 17th Floor • Portland, OR 97204
503.223.3171 • norris-stevens.com

503.223.3171 • norris-stevens.com