

SANDY PLAINS BUSINESS PARK

1800 Sandy Plains Pkwy

Building 100

Marietta, GA 30066

OFFICE / FLEX SPACE
AVAILABLE

SUITE 104 | 8,465 SF

SUITE 120 | 10,533 SF



Ackerman & Co.

JIMMY STEVENS

770.913.3983

jstevens@ackermanco.net

www.ackermanco.com

**NOW
LEASING**



IDEAL BUSINESS LOCATION, MINUTES FROM INTERSTATE 75

- Space available: Suite 104 8,465 SF | Suite 120 10,533 SF
- Dock-high doors & Drive-in doors
- Quality-construction, single-story flex office building
- Attractive and professionally landscaped business park environment
- Diverse mix of professional services, manufacturing, medical and technology tenants
- Quick access to I-75 and I-575, Highway 5 Connector, 120 Loop and Highway 41
- Close proximity to restaurants, shopping, banking and hotels
- Surrounded by 24,862 households with incomes of \$68,547 within 3 miles
- Strong local pro-business environment: state tax credit of \$3,500 per net new job annually for 5 years

OWNED BY

AGELLAN
COMMERCIAL REIT

WELL LOCATED; CLOSE TO I-75 INTERCHANGE

Ackerman & Co.

SANDY PLAINS BUSINESS PARK

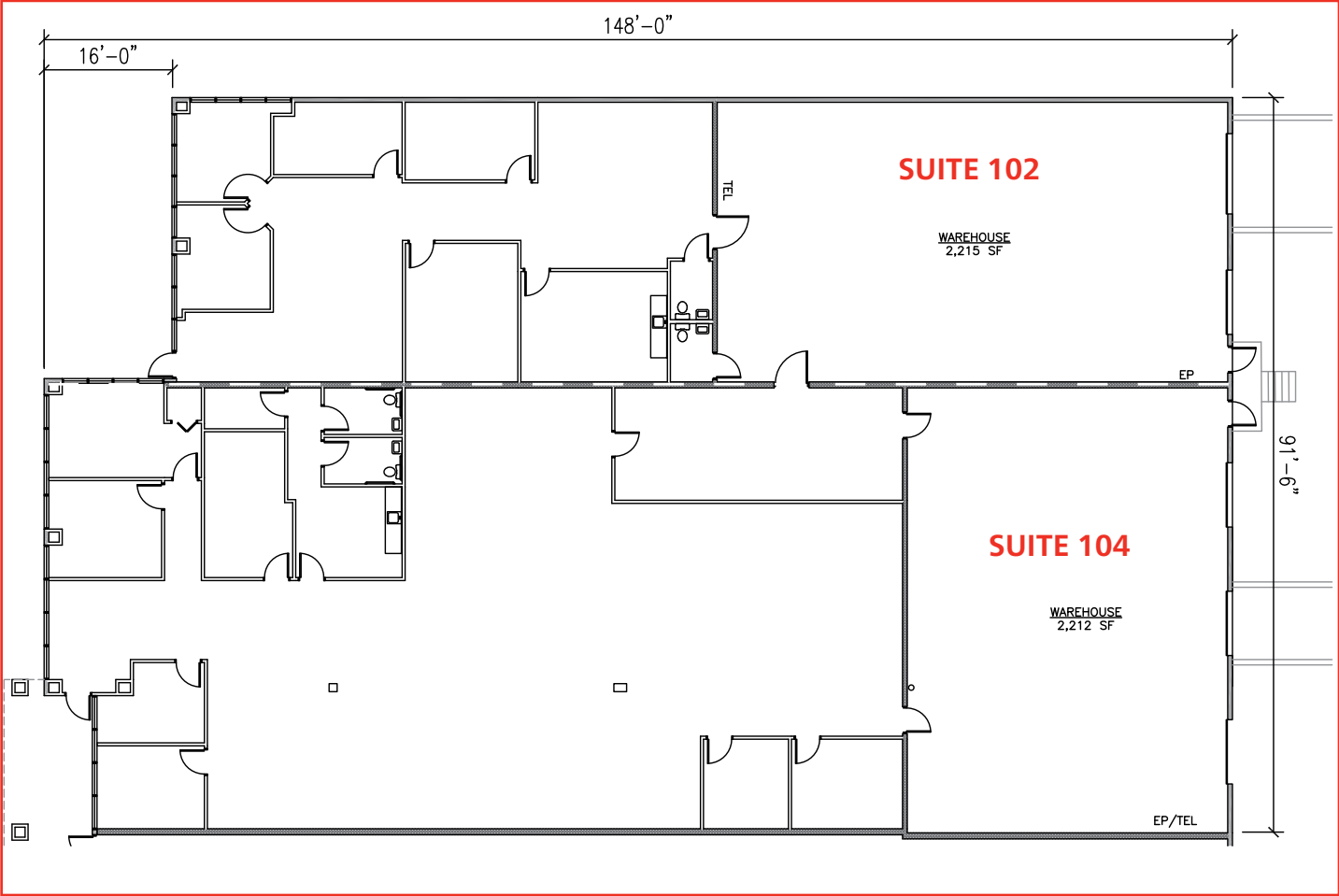
1800 Sandy Plains Pkwy
Building 100
Marietta, GA 30066

**OFFICE / FLEX SPACE
AVAILABLE**

**SUITE 104- 8,465 SF
SUITE 120- 10,533 SF**



FLOOR PLAN: SUITE 104- 8,465 SF



Ackerman & Co.

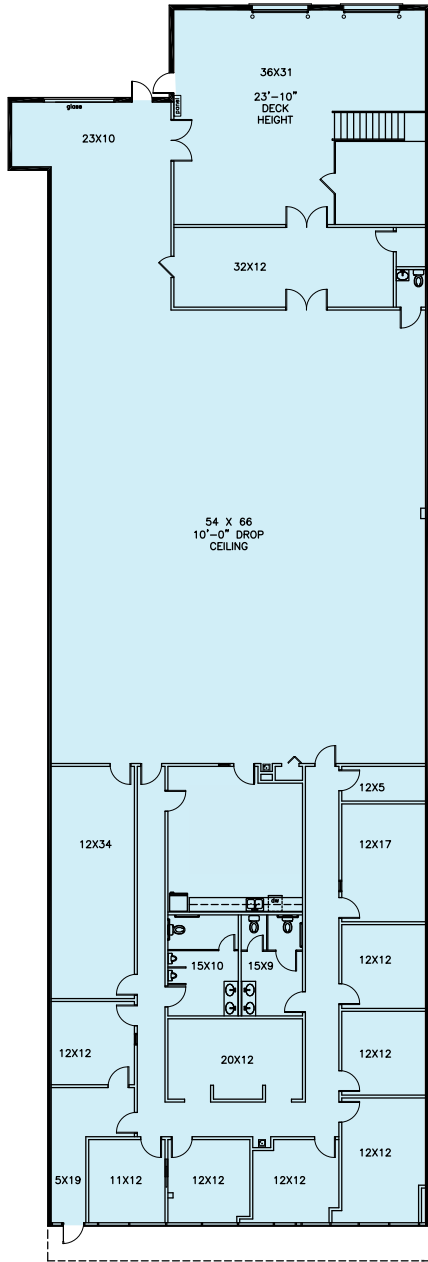
SANDY PLAINS BUSINESS PARK
1800 Sandy Plains Pkwy
Building 100
Marietta, GA 30066

OFFICE / FLEX SPACE
AVAILABLE
SUITE 104
8,465 SF



AVAILABLE SPACE

Total Size - 8,465 SF
2 Dock High Doors
1 Drive In Door



Ackerman & Co.

SANDY PLAINS BUSINESS PARK
1800 Sandy Plains Pkwy
Building 100, Suite 120
Marietta, GA 30066

**OFFICE / FLEX SPACE
AVAILABLE**
SUITE 120 | 10,533 SF

