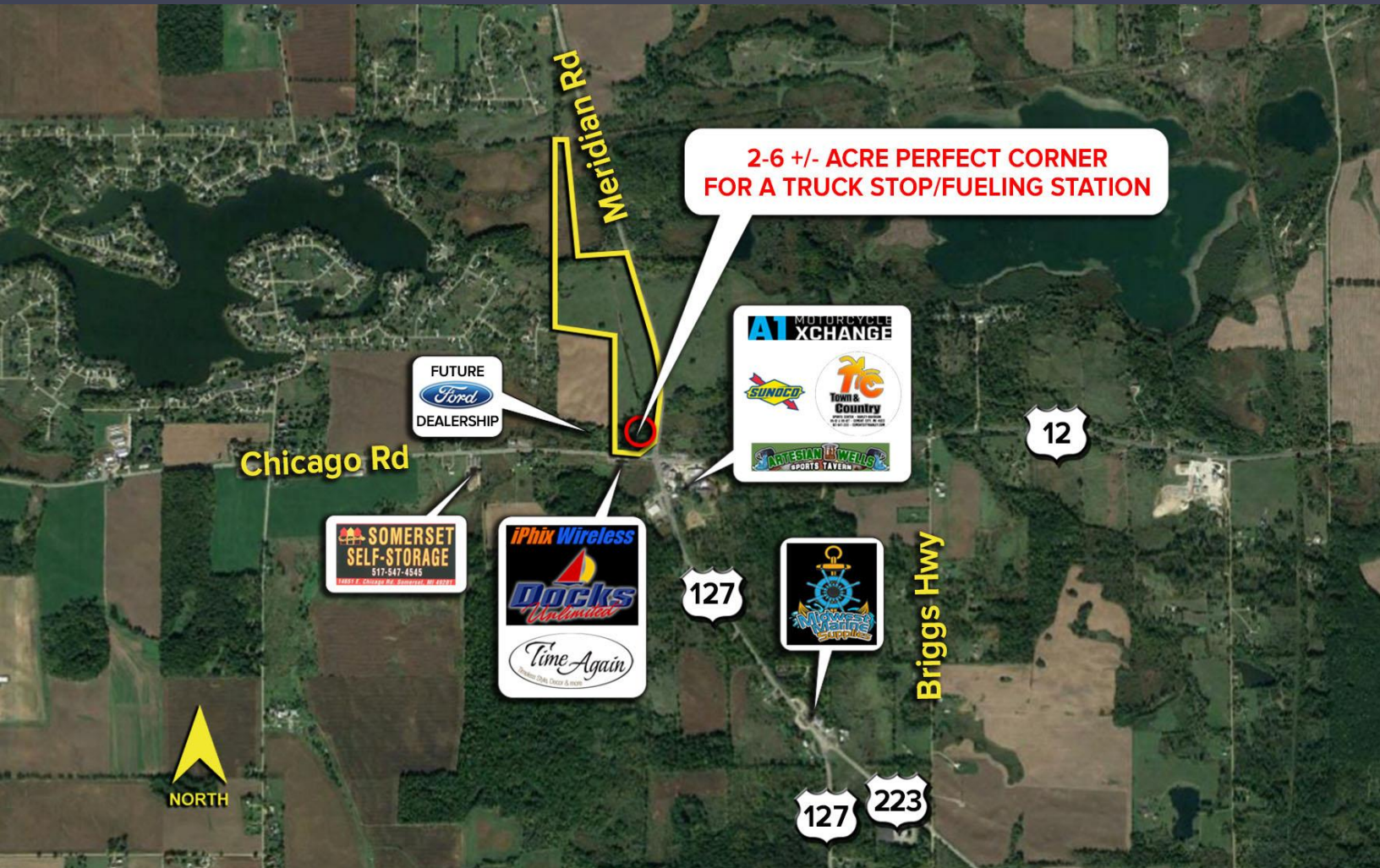


LAND FOR SALE



SIGNATURE ASSOCIATES
KNOW SIGNATURE | KNOW RESULTS

18808 US-12 HIGHWAY | CEMENT CITY, MI



LARGE VOLUME OF COMMERCIAL TRAFFIC FROM JACKSON TO TOLEDO

PROPERTY FEATURES

- 60.14 development acres available
- Zoned AG-1; Master zoned commercial C1-C3
- Excellent corner with room to expand
- Land can be divided for the right user
- Net useable acreage is 47.67 acres
- Sale Price: \$2,000,000 (\$33,255.74/acre)

For more information, please contact:

PETER VANDERKAAY

(248) 359 3837

pvanderkaay@signatureassociates.com

PAUL SAAD

(248) 359 0652

psaad@signatureassociates.com

SIGNATURE ASSOCIATES

One Towne Square, Suite 1200

Southfield, MI 48076

www.signatureassociates.com

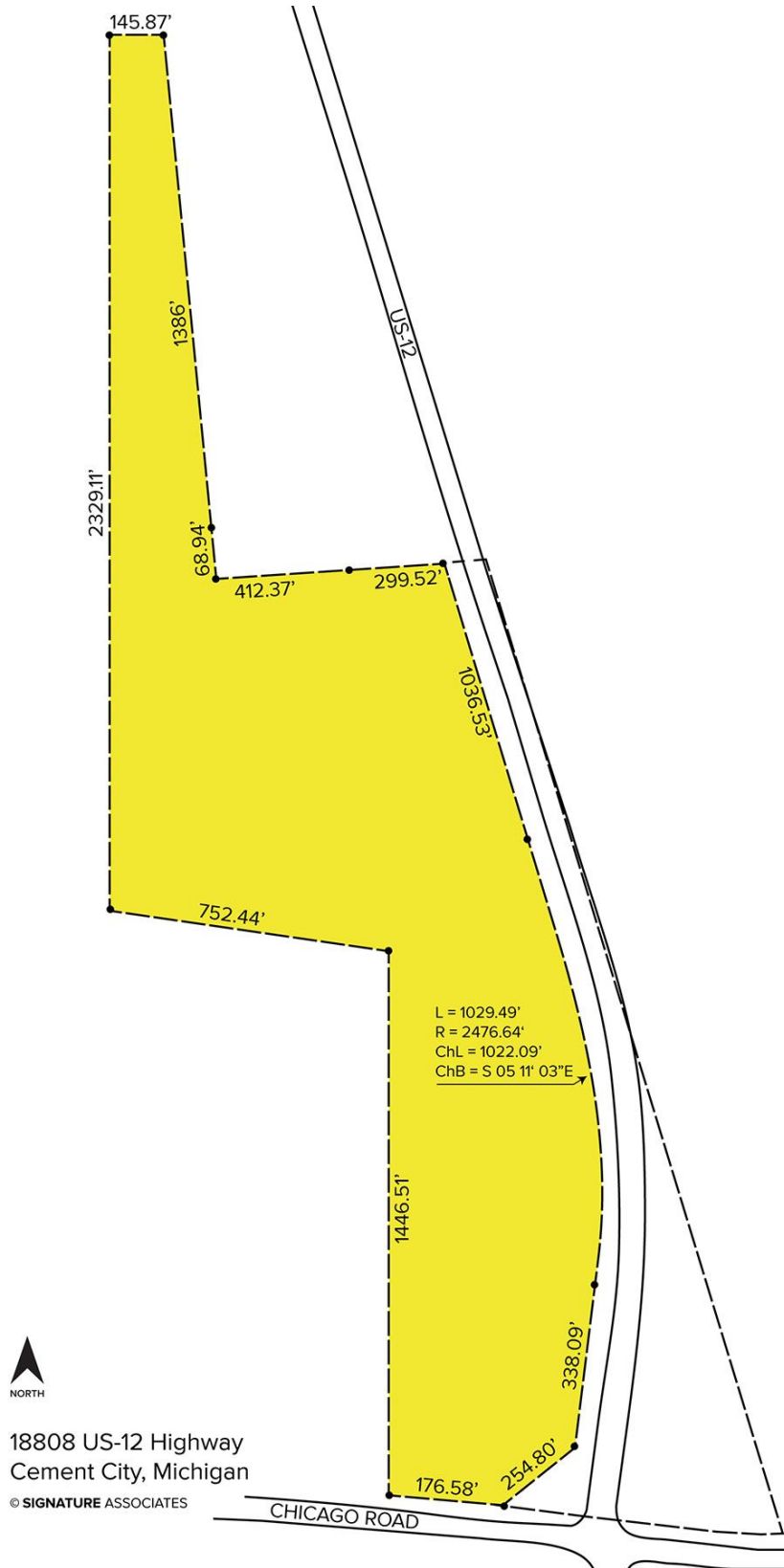
Information is subject to verification and no liability for errors or omissions is assumed. Price is subject to change and listing withdrawal.

18808 US-12 Highway – Cement City, Michigan

Land For Sale

60.14
Acres
AVAILABLE

Site Plan



For more information, please contact:

PETER VANDERKAAY

(248) 359 3837

pvanderkaay@signatureassociates.com

PAUL SAAD

(248) 359 0652

psaad@signatureassociates.com

SIGNATURE ASSOCIATES

One Towne Square, Suite 1200

Southfield, MI 48076

www.signatureassociates.com