

FOR SALE

3300 S BROADWAY
LOS ANGELES, CA 90007

±16,000 SF

INDUSTRIAL BUILDING



For more information, please contact:

Daniel Park

(213) 446-0396

Danielpark777@hotmail.com

DRE# 01227056

PARK INDUSTRIAL
SPECIALIZING IN INDUSTRIAL REAL ESTATE SERVICES

Park Industrial Realty
800 McGarry St, 5th Floor
Los Angeles, CA 90021
Corporation DRE# 01983713

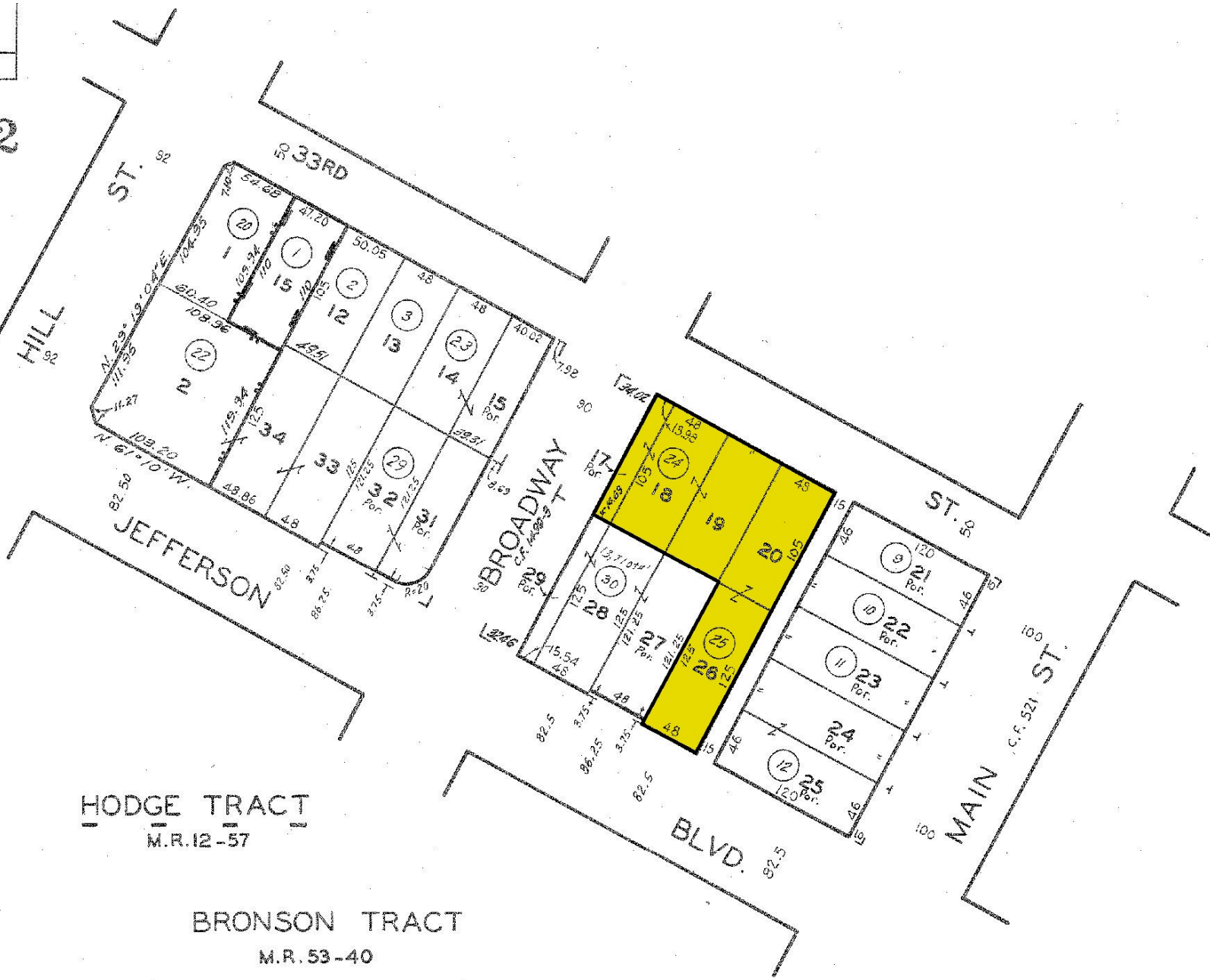
Building SF:	16,000 SF	• Located near USC and Downtown Los Angeles
Land SF:	22,624 SF	
Year Built:	1966, 1934	• Ideal for garment, warehouse, e-commerce, or studio use
Clear Height:	14'	• 14 foot clear height with wood bow truss ceiling
Power:	400a, 120-240v, 1p, 3w	
# Parking:	13	• Deluxe offices, showrooms, and meeting rooms
Loading:	3 GL	• Secure fenced and gated yard with automatic gate
Zoning:	M1	
Sale Price:	\$4,320,000 (\$270.00/SF)	• On-site parking for 13 cars
		• Excellent owner-user opportunity

All information has been furnished from sources which we deem reliable, but for which we assume no liability. All measurements are approximate. Broker/Owner do not warrant its accuracy. Buyer/Lessee must verify all information.

5122 | 7
SCALE 1" = 80'

2002

1-4-
10-14-
670131
9105
91123
96022
2002 032



HODGE TRACT
M.R. 12-57

BRONSON TRACT
M.R. 53-40

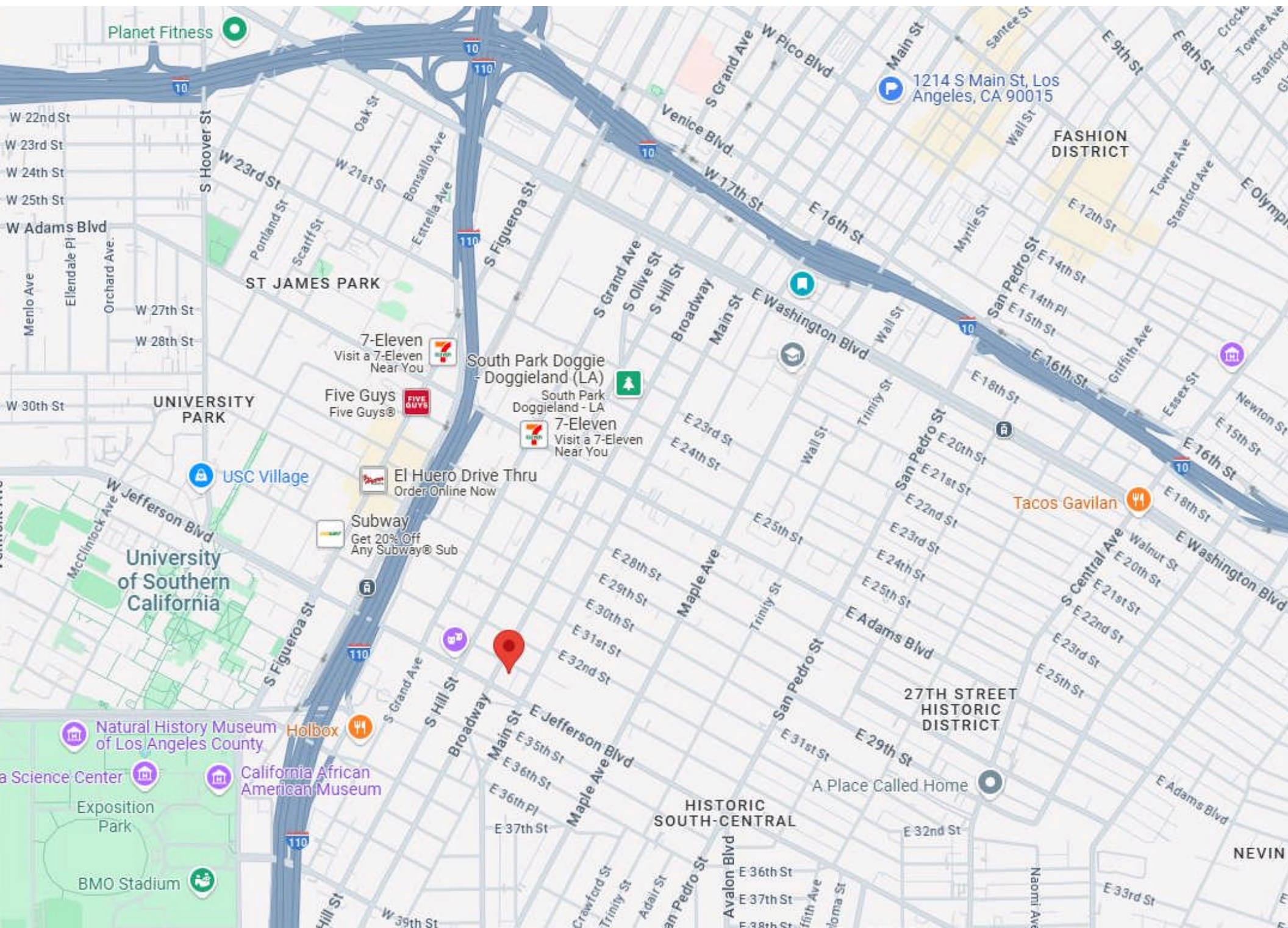
TRACT NO. 23355
M.B. 832-25-26

CODE
6658

FOR PREV. ASSA'T. SEE: 33 - 43, 44 & 55

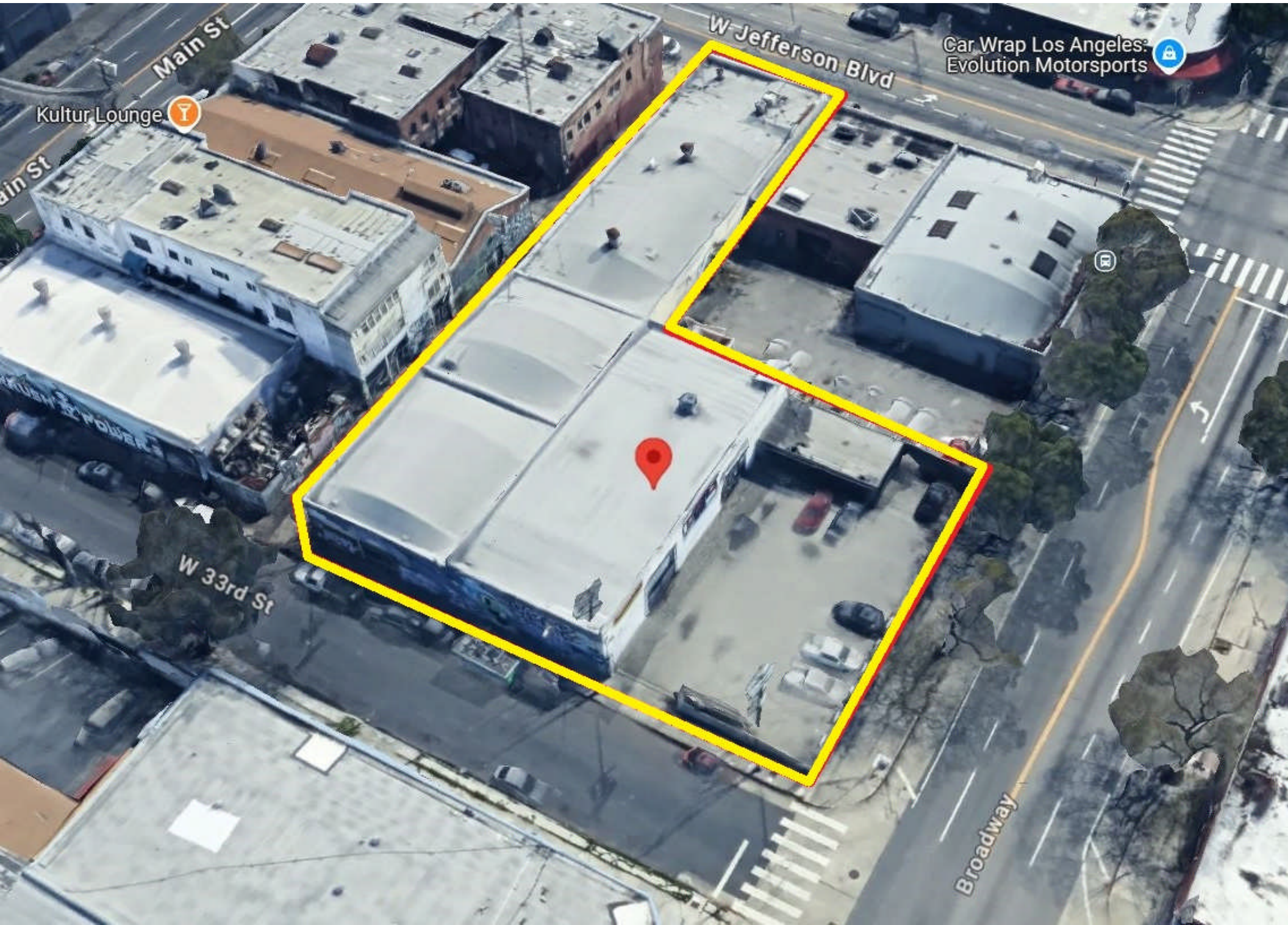
FOR SALE | ±16,000 SF Industrial Building

3300 S Broadway



FOR SALE | ±16,000 SF Industrial Building

3300 S Broadway



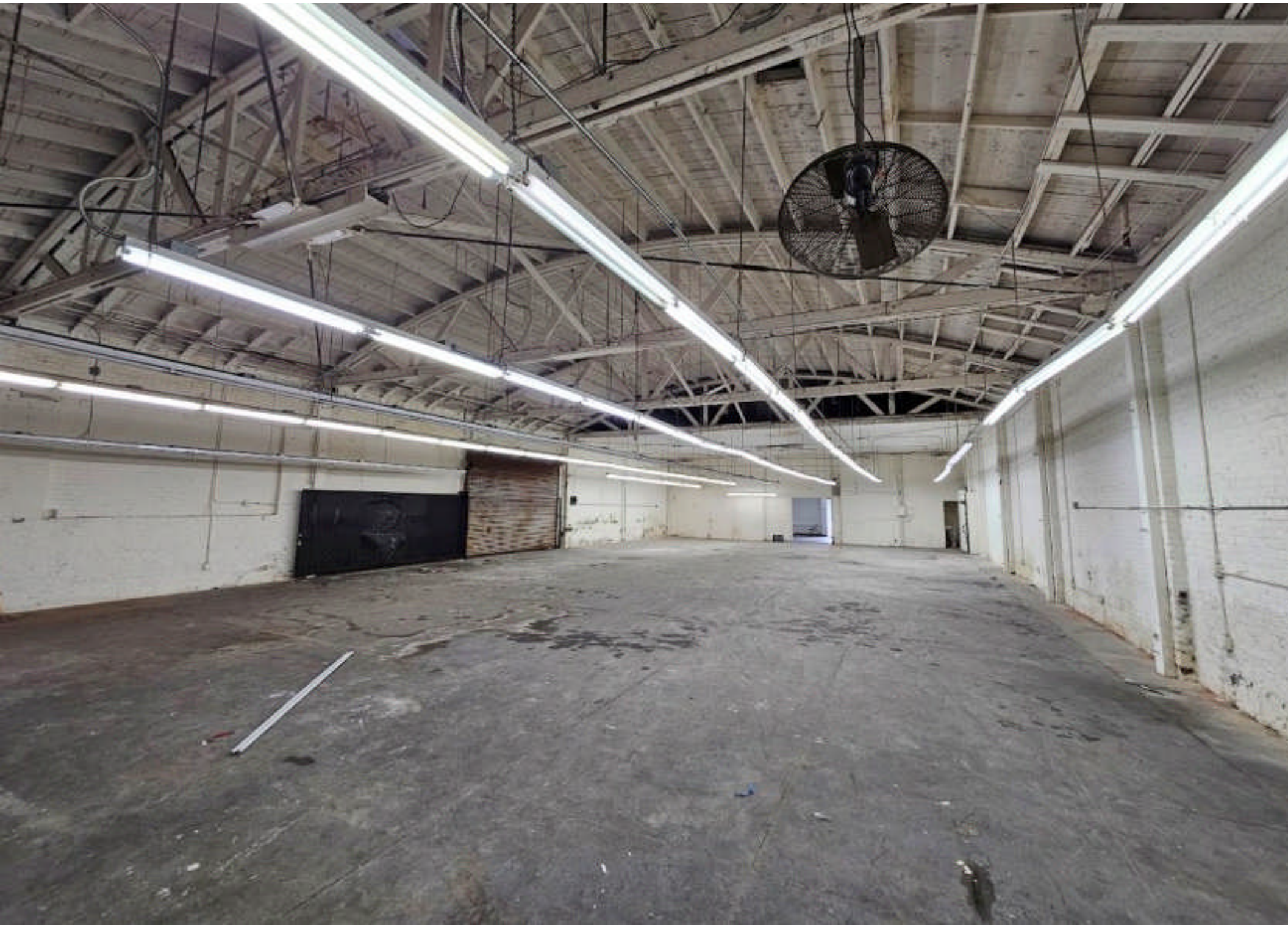
FOR SALE | ±16,000 SF Industrial Building

3300 S Broadway



FOR SALE | ±16,000 SF Industrial Building

3300 S Broadway

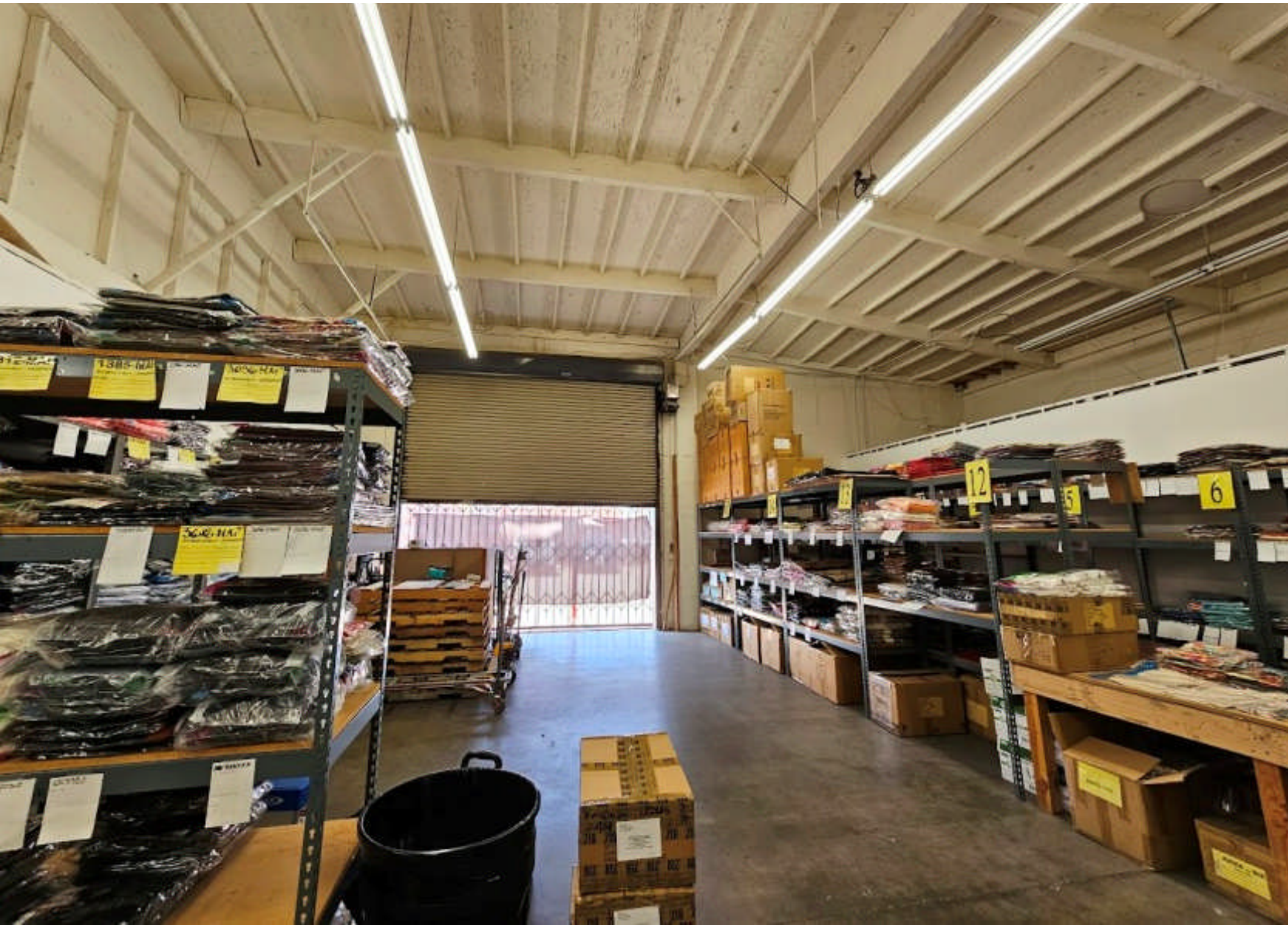


FOR SALE | ±16,000 SF Industrial Building

3300 S Broadway







FOR SALE | ±16,000 SF Industrial Building

3300 S Broadway

