



Auburn Professional Village

1340-1350 South Grandstaff Drive

Auburn, IN 46706



Office Condos For Lease

Multiple office condos for lease at Auburn Professional Village. These condos offer a variety of floor plans and are perfect for any growing business. Several suites are contiguous and can be combined, offering a total space of 7,944 SF.

2 land tracts around the offices are also for sale. All utilities have been brought to the sites and they are primed and ready for development. The owner's association limits possible uses to office and medical.

Property Highlights

- ▶ Zoned C2 - General Commercial
- ▶ 2,304 - 7,944 SF
- ▶ **FOR LEASE: \$12.00/SF/Yr NNN**
- ▶ Multiple units and floor plans available
- ▶ Fully finished basement
- ▶ 2 land tracts for sale - 0.45 AC per lot
- ▶ **FOR SALE: \$99,999 PER LOT**

NEAL BOWMAN, SIOR

Senior Broker
260 424 8448
neal.bowman@sturgespg.com

PHILIP HAGEE

Listing Manager
260 424 8448
philip.hagee@sturgespg.com

IAN SMITH

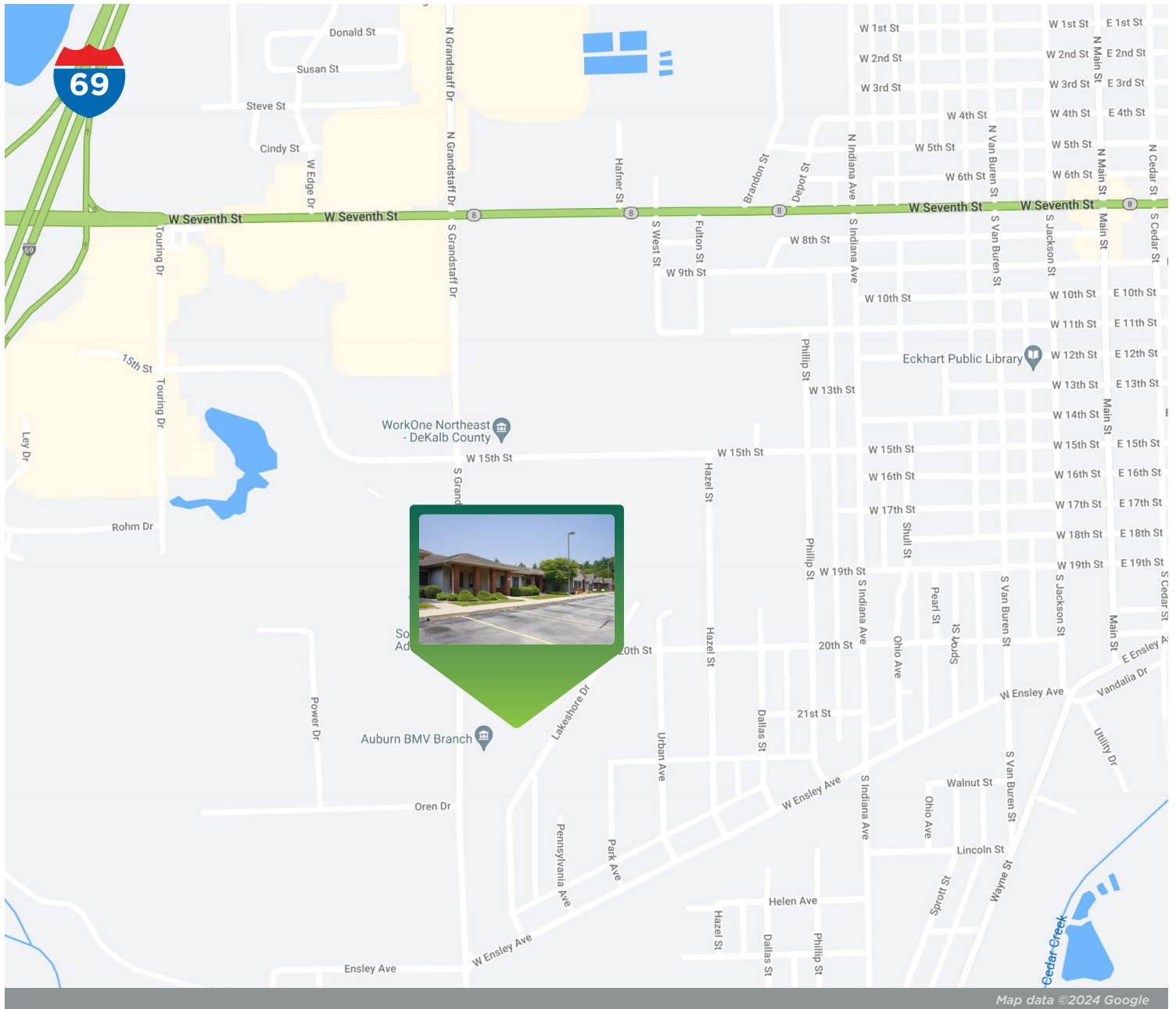
Brokerage Associate
260 424 8448
ian.smith@sturgespg.com



Auburn Professional Village

1340-1350 South Grandstaff Drive

Auburn, IN 46706



Map data ©2024 Google

Excellent Location

Located just one mile off I-69 Exit 329 and just 20 miles north of Fort Wayne, Auburn Professional Village boasts a fantastic location within the city of Auburn. The property is south of US 6 and just minutes from downtown Auburn. Neighboring businesses include the Auburn BMV Branch, Lassiter Advertising, and Fort Financial Credit Union.

NEAL BOWMAN, SIOR

Senior Broker
260 424 8448
neal.bowman@sturgespg.com

PHILIP HAGEE

Listing Manager
260 424 8448
philip.hagee@sturgespg.com

IAN SMITH

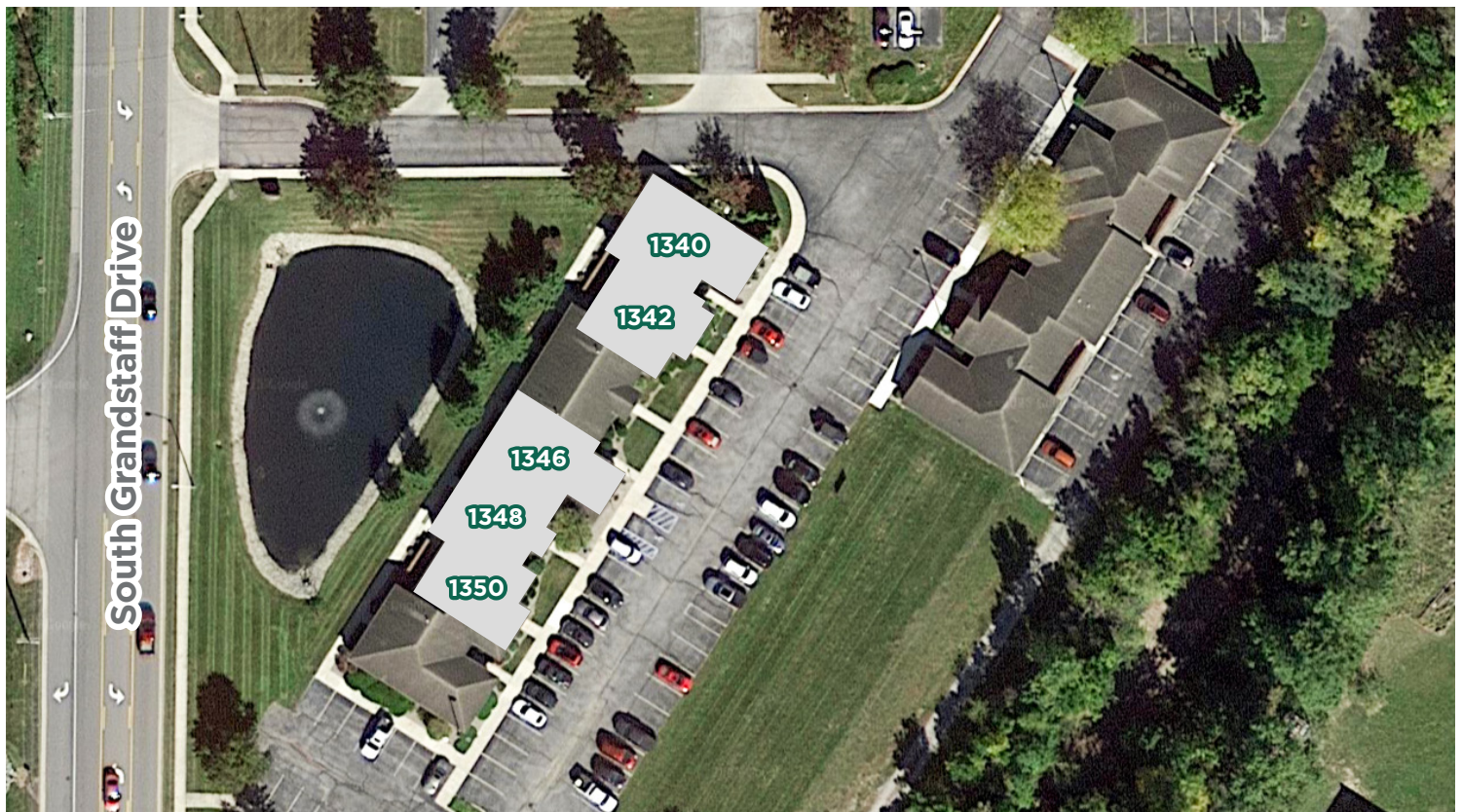
Brokerage Associate
260 424 8448
ian.smith@sturgespg.com



Auburn Professional Village

1340-1350 South Grandstaff Drive

Auburn, IN 46706



NEAL BOWMAN, SIOR

Senior Broker
260 424 8448
neal.bowman@sturgespg.com

PHILIP HAGEE

Listing Manager
260 424 8448
philip.hagee@sturgespg.com

IAN SMITH

Brokerage Associate
260 424 8448
ian.smith@sturgespg.com

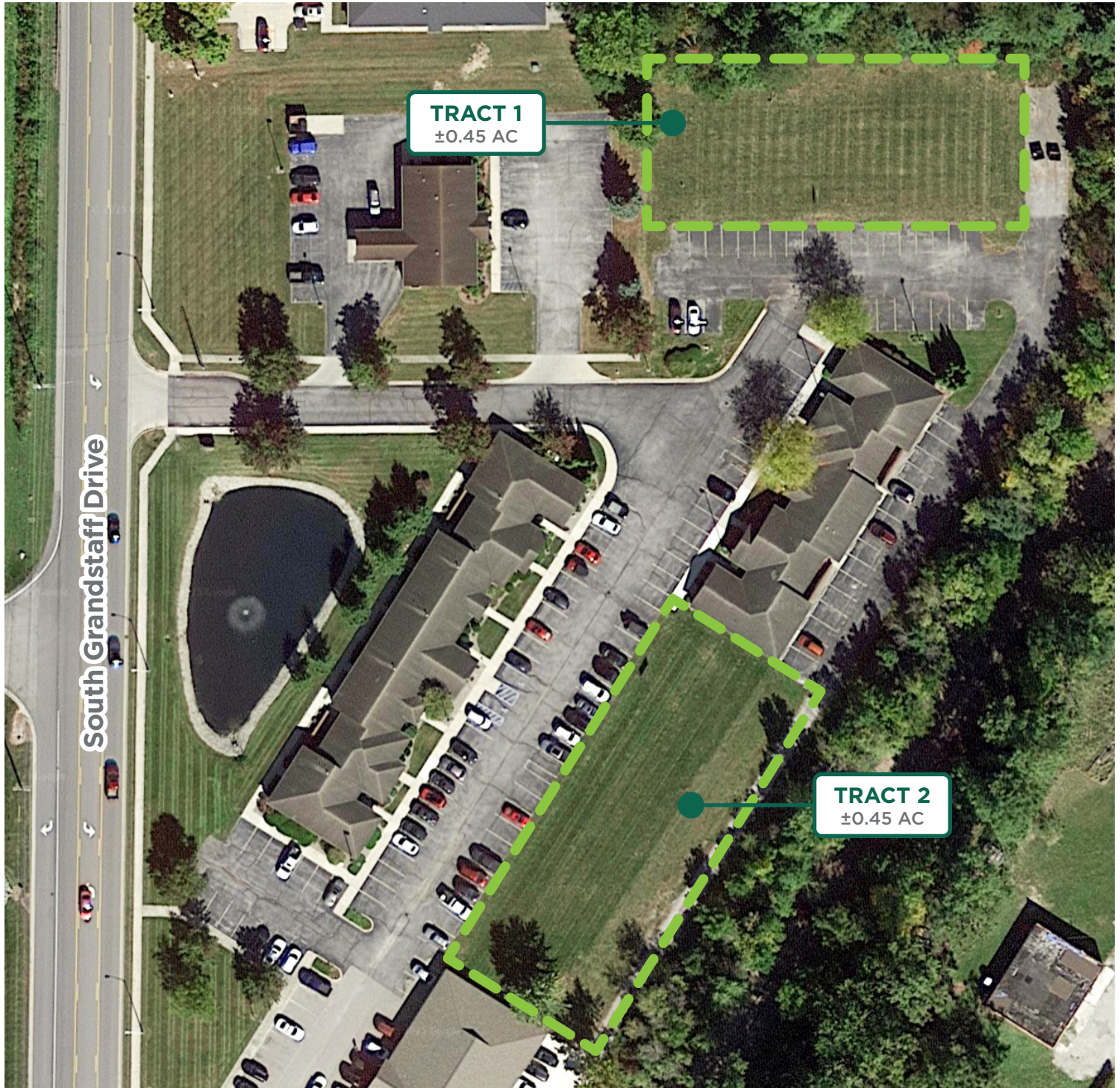


Auburn Professional Village

1340-1350 South Grandstaff Drive

Auburn, IN 46706

Site Plan



NEAL BOWMAN, SIOR

Senior Broker
260 424 8448
neal.bowman@sturgespg.com

PHILIP HAGEE

Listing Manager
260 424 8448
philip.hagee@sturgespg.com

IAN SMITH

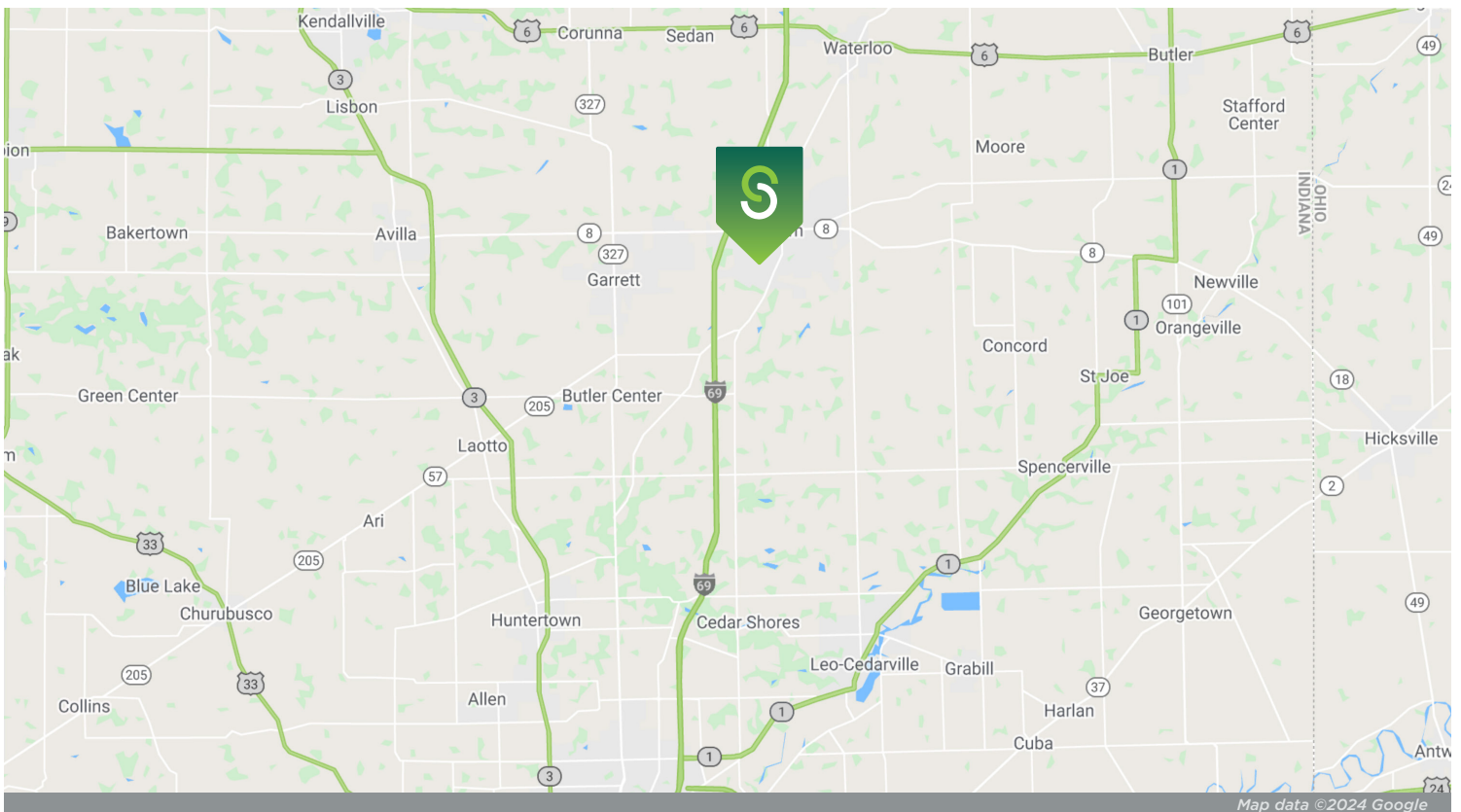
Brokerage Associate
260 424 8448
ian.smith@sturgespg.com



Auburn Professional Village

1340-1350 South Grandstaff Drive

Auburn, IN 46706



© 2024 Sturges, LLC. This information has been obtained from sources believed reliable. We have not verified it and make no guarantee, warranty, or representation about it. Any projections, opinions, assumptions, or estimates used are for example only and do not represent the current or future performance of the property. You and your advisors should conduct a careful, independent investigation of the property to determine to your satisfaction the suitability of the property for your needs.

Photos herein are the property of their respective owners and use of these images without the express written consent of the owner is prohibited. Maps used herein are attained via Snazzy Maps, Google Maps, and/or Google Earth, and are therefore the property of Google.

NEAL BOWMAN, SIOR

Senior Broker
260 424 8448
neal.bowman@sturgespg.com

PHILIP HAGEE

Listing Manager
260 424 8448
philip.hagee@sturgespg.com

IAN SMITH

Brokerage Associate
260 424 8448
ian.smith@sturgespg.com



Auburn Professional Village

1340-1350 South Grandstaff Drive

Auburn, IN 46706

PROPERTY INFORMATION

Address	1340 - 1350 S Grandstaff Drive
City, State, Zip	Auburn, IN 46706
County	DeKalb
Township	Union
Parcel Number	17-06-31-401-015.000-025



LEASE INFORMATION

Lease Rate & Type	\$12.00/SF/Yr NNN
Terms	3-5 Years
Availability	Immediate

AVAILABLE LOTS

Lot Number	Size	Total
• 1	0.45 AC	\$99,999
• 2	0.45 AC	\$99,999

AVAILABLE UNITS

Total Building Area	15,888	
Total Available	13,512 RSF	
Max Contiguous	7,944 SF	
Units Available	RSF	Monthly Rate
• 1340	3,024	\$3,024
• 1342	2,544	\$2,544
• 1346	3,096	\$3,096
• 1348	2,304	\$2,304
• 1350	2,544	\$2,544

SITE DATA

Site Acreage	5.038 AC	Interstate	I-69
Zoning	C2	Traffic Counts	9,800
Parking	Surface	Parking Ct	Ample

RESPONSIBLE PARTIES

Utilities	Tenant
Lawn & Snow	Tenant
Property Taxes	Tenant
Property Insurance	Tenant
Maintenance & Repairs	Tenant
Common Area	Tenant
Roof & Structure	Landlord
Janitorial	Tenant

BUILDING INFORMATION

Property Type	Office
Year Built	1998
# of Stories	1 (with basement)
Construction Type	Wood frame
Roof	Shingle
Heating	Package
A/C	Package
Sprinkler	No
ADA Compliant	Yes
Elevators	N/A
Signage	Pylon and storefront

UTILITIES

Electric Provider	City of Auburn
Natural Gas Provider	NIPSCO
Water & Sewer Provider	City of Auburn

NEAL BOWMAN, SIOR

Senior Broker
260 424 8448
neal.bowman@sturgespg.com

PHILIP HAGEE

Listing Manager
260 424 8448
philip.hagee@sturgespg.com

IAN SMITH

Brokerage Associate
260 424 8448
ian.smith@sturgespg.com