

1663

Mission Street

San Francisco CA 94103

TCN
WORLDWIDE
REAL ESTATE SERVICES

For Lease

Craig Hansson
craig@starboardcre.com
415.710.7768

Hans Hansson
hans@starboardcre.com
415.517.2589



STARBOARD CRE
LOCAL • INDEPENDENT • ENTREPRENEURIAL

BUILDING SUMMARY

1663 Mission St.

| | |
|----------------|---------------------|
| Address: | 1663 Mission Street |
| Property Type: | Creative Office |
| Lease Type: | Industrial Gross |
| Term: | 3 to 5 years |
| Rate: | Ask Agent |

1

Suite 510

±1,140 SF
5th Floor

2

Suite 520

±3,000 SF
5th Floor

3

Plum street mezzanine

±2,500 SF

Suites 510 and 520 can be combined for a total of **4,140 sq ft.**



Highlights



Location & Accessibility

Near SoMa, easy 101 access, close to amenities.



Parking

Opposite a well-lit parking facility.



View

Excellent window line on both sides.



Transportation

Immediate access to all forms of transportation.



Office Layout

High ceilings, natural light, mixed spaces.



Building Features

Updated lobby, modern elevators, renovated spaces.



Security

Security guard on site for enhanced safety.

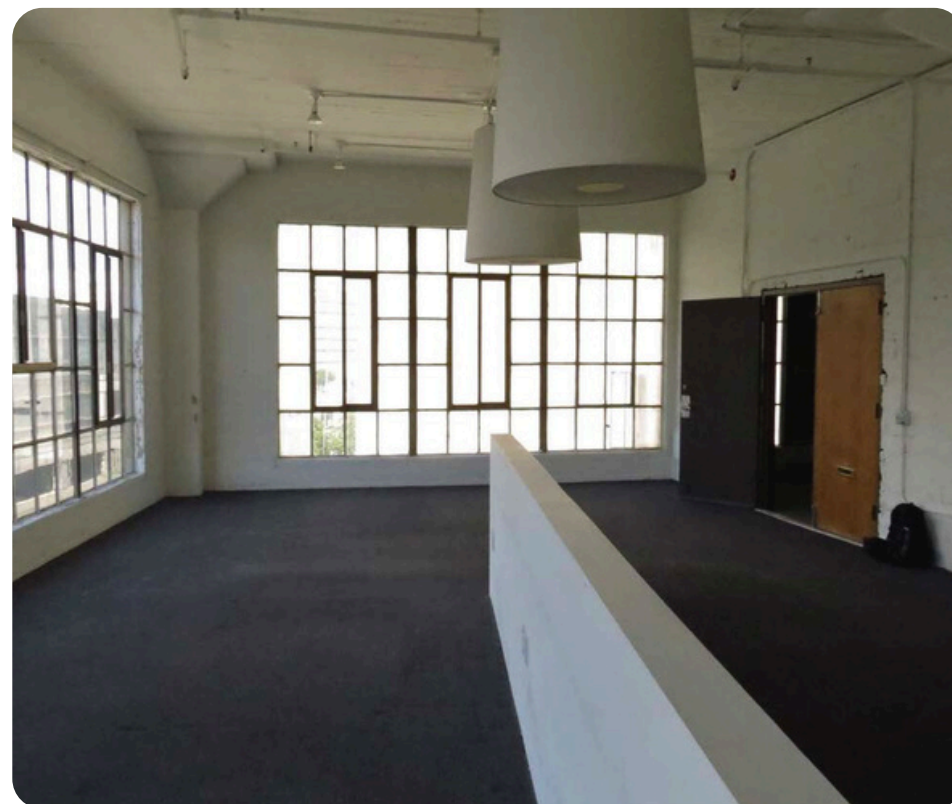
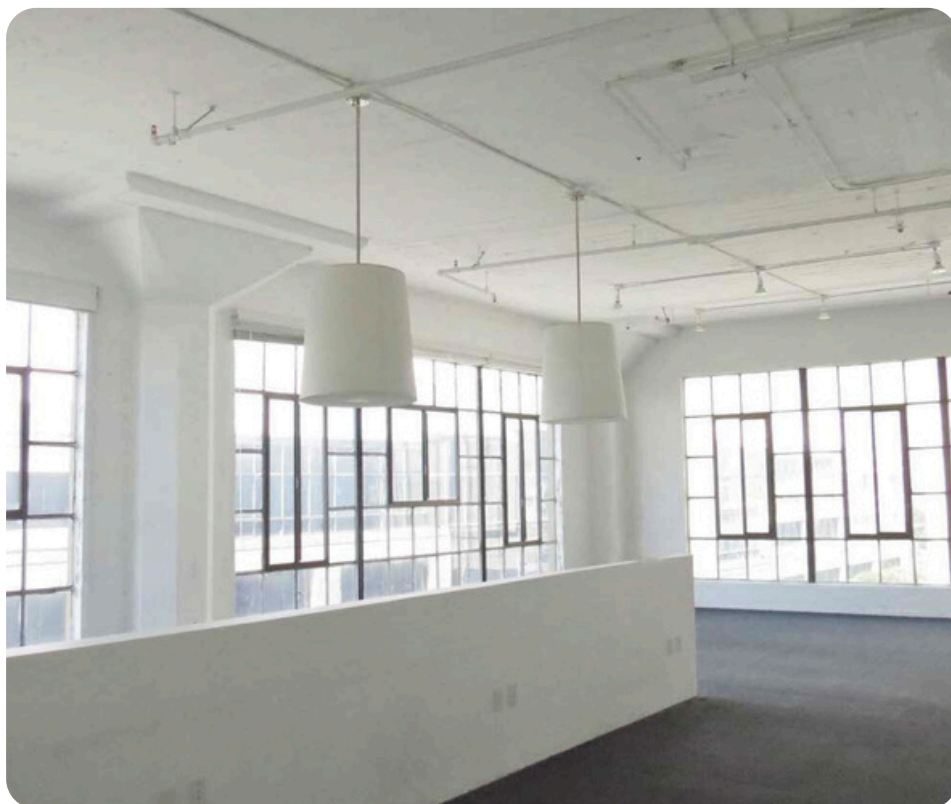


Suite 510

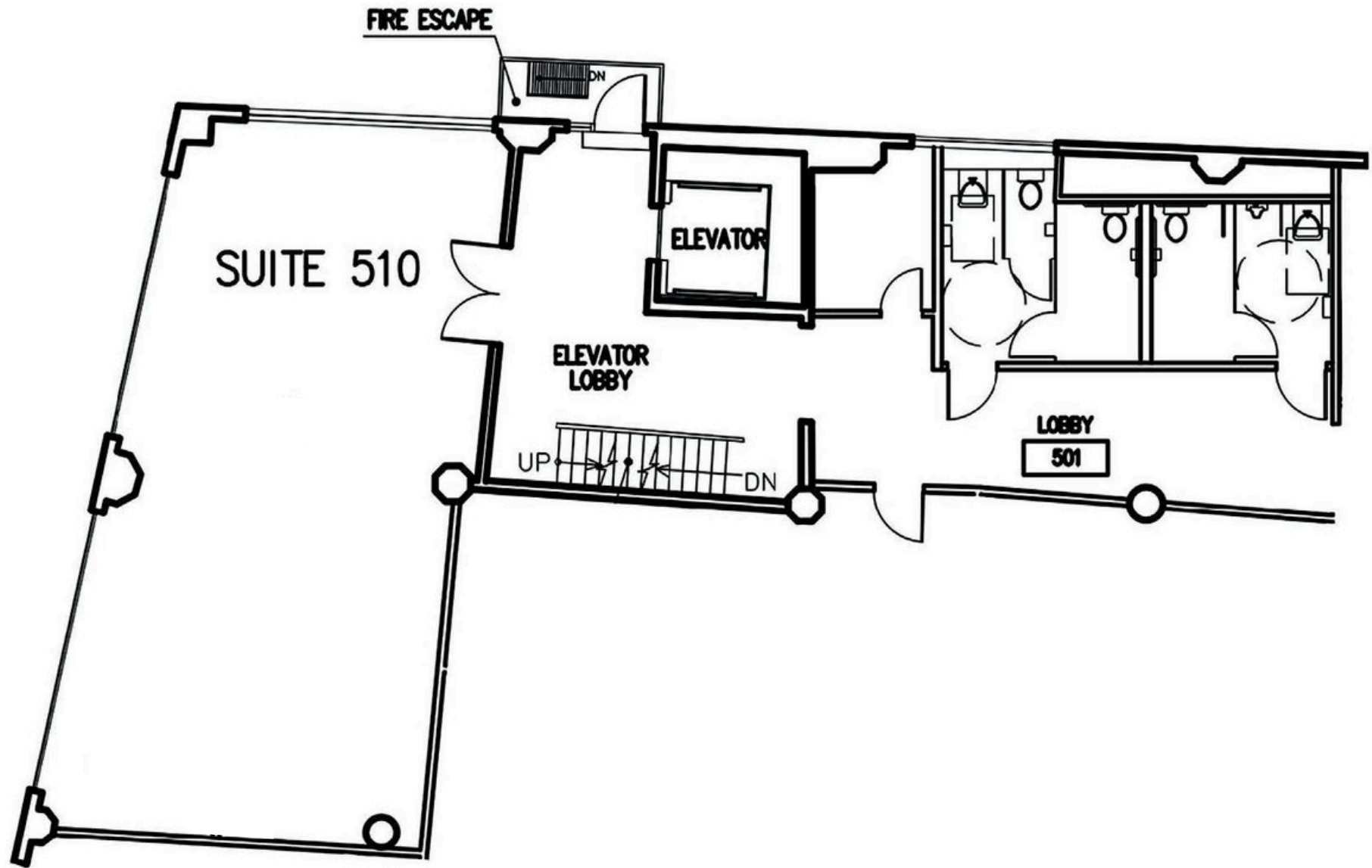
- **SUITE: 510**
- **Rentable SF:** ±1,140
- **Price:** \$24 sf/YR
- **Lease Type:** Industrial Gross
- **Term:** 3 to 5 years

Highlights

- 1 Private Office
- Exposed Ceiling
- Great Natural Light
- Shared bathrooms
- Elevator Access
- ADA Bathrooms
- Suites 520 and 510 can be combined



Suite 510 | Floorplan



Suite 520

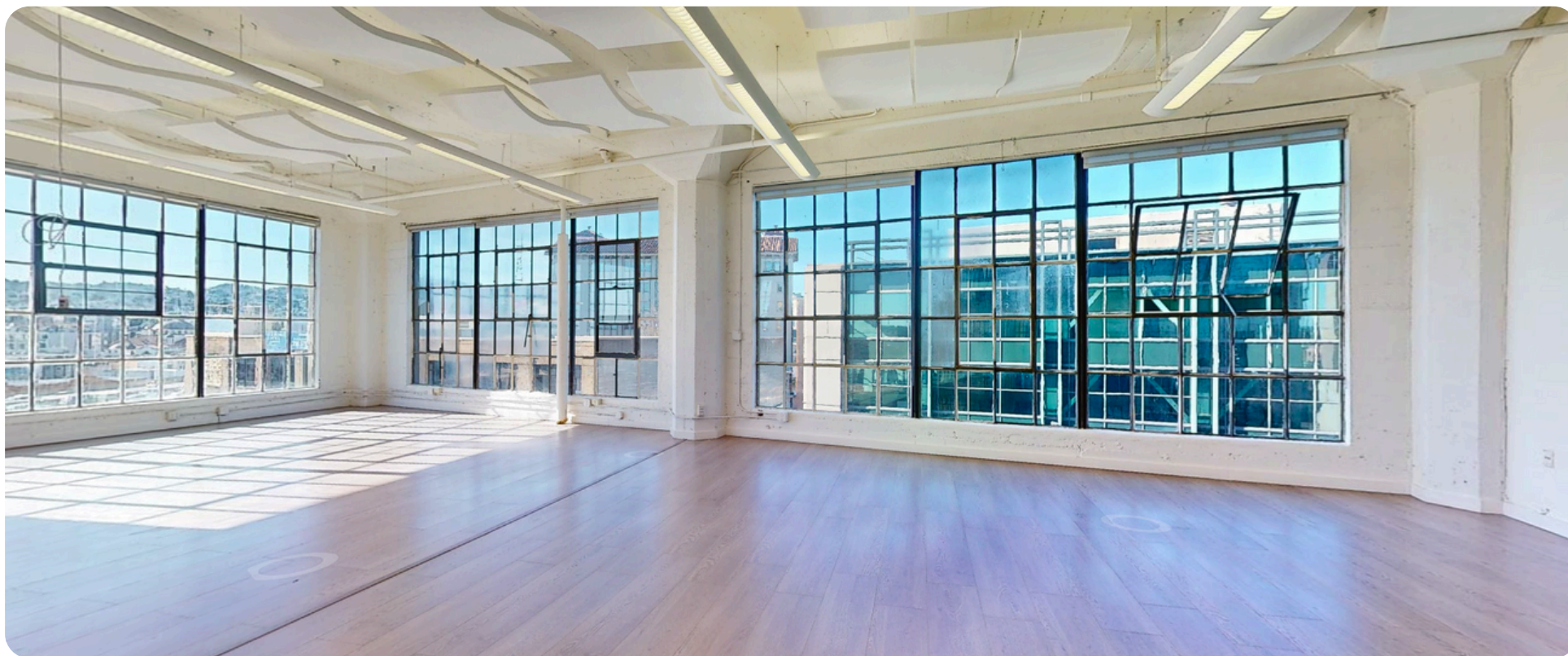
- **SUITE:** 520
- **Rentable SF:** ± 3,000
- **Price:** \$24 SF/YR
- **Lease Type:** Industrial Gross
- **Term:** 3 to 5 years

Fully Furnished

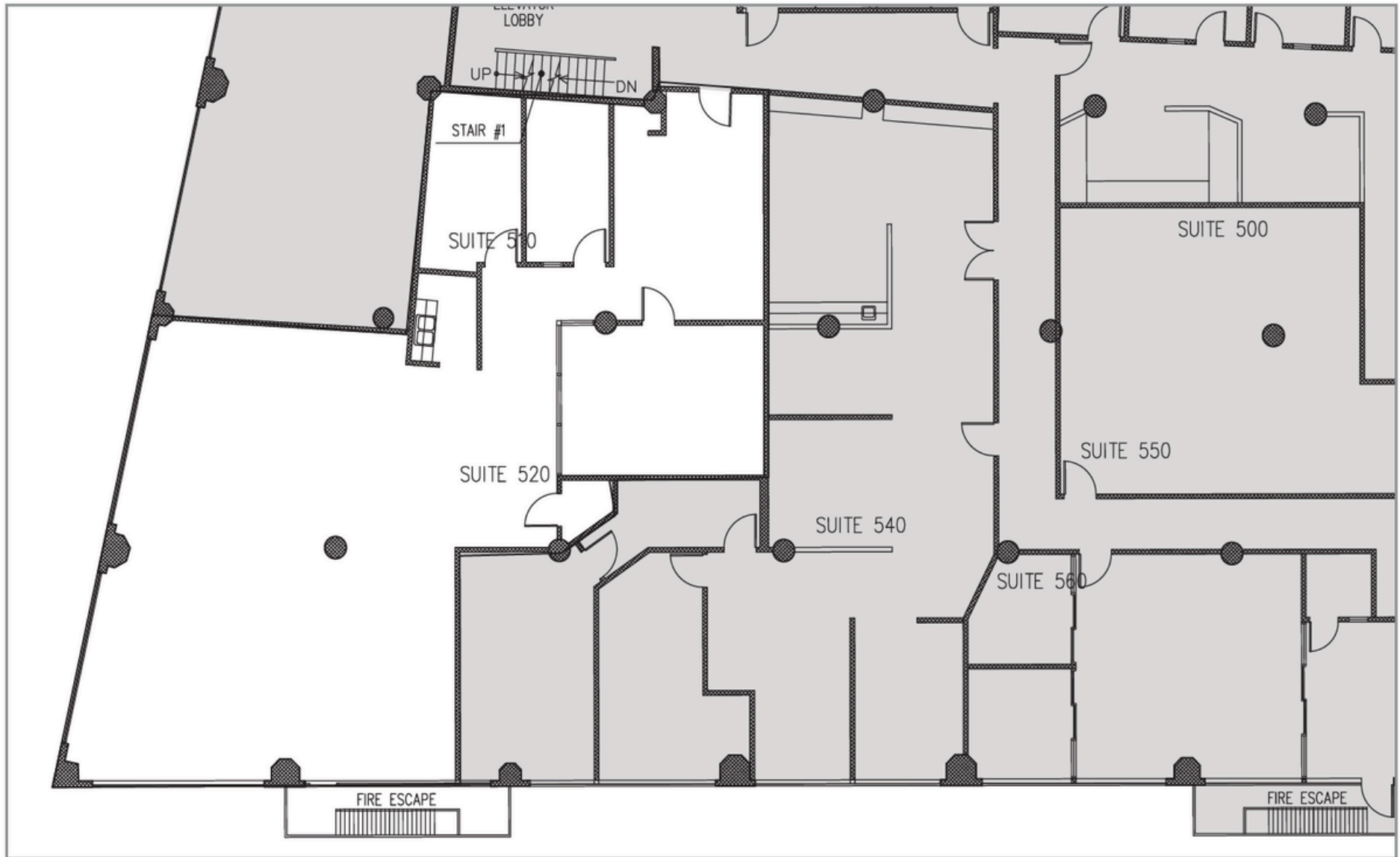
Highlights

- Large reception area
- Glass conference room
- Two interior offices with glass
- Kitchen
- Large open area
- Excellent window line
- Suites 520 and 510 can be combined

3D Virtual Tour

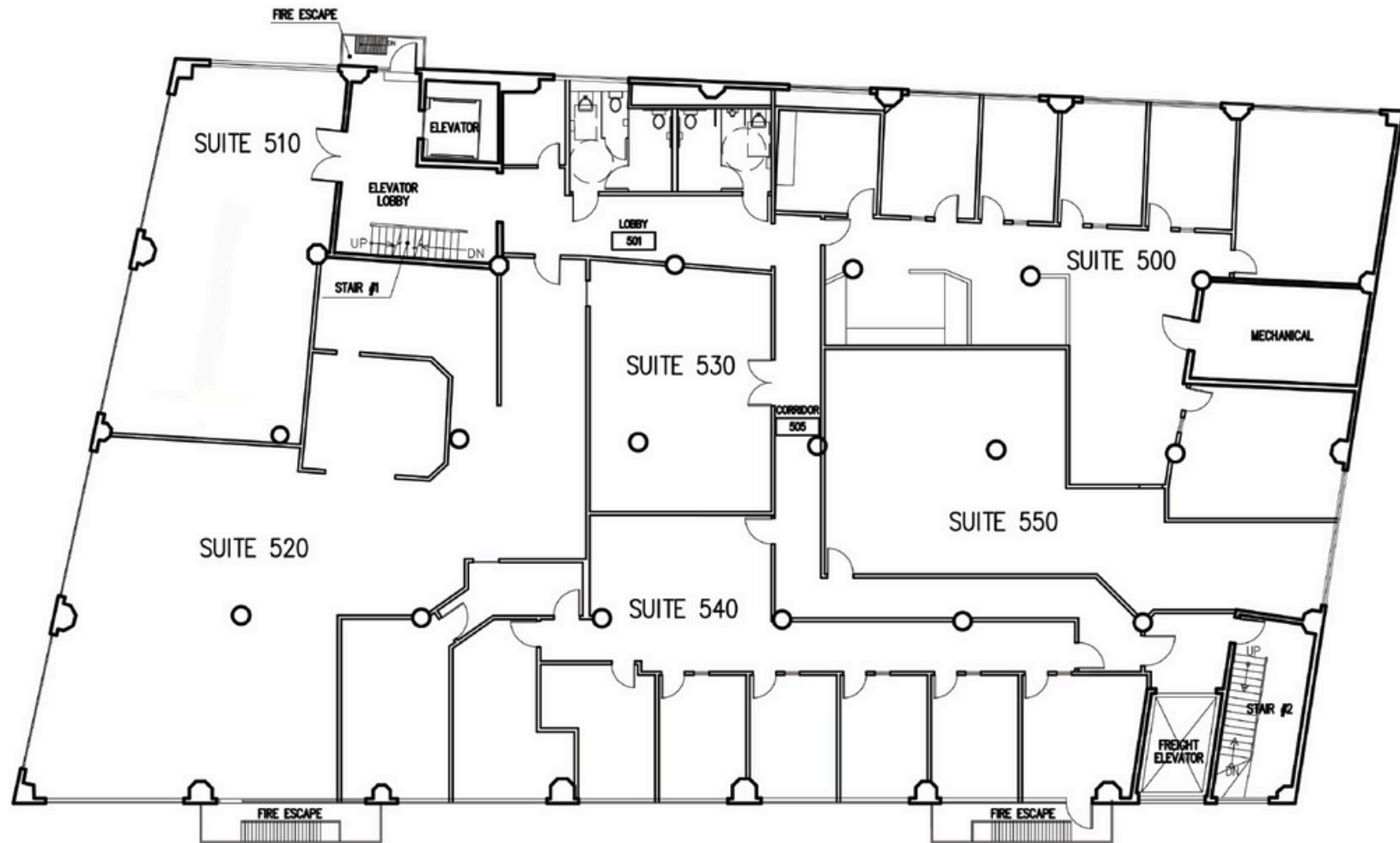


Suite 520 | Floorplan



510 & 520 Combined

Suites 510 and 520 can be combined for a total of 4,140 sq ft.



Plum street mezzanine

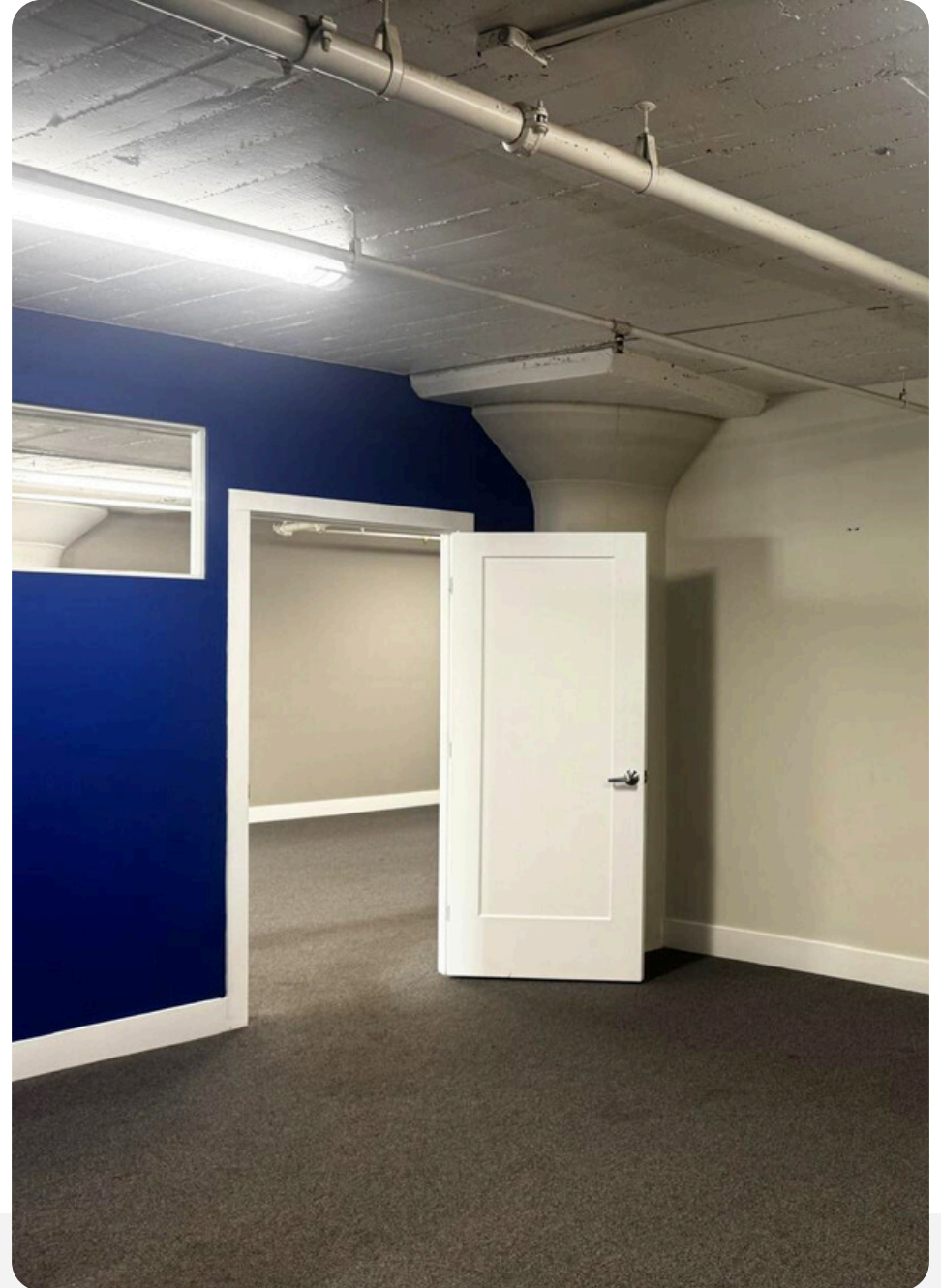
- **SUITE:** Plum street mezzanine
- **Rentable SF:** ± 2,500

Highlights

- Full floor
- Elevator access



Plum street mezzanine | Images



Team



Craig Hansson

Vice President

craig@starboardcre.com

CELL: 415.710.7768

CA DRE #01841643

Call

View Profile



HANS HANSSON

President / Broker of Record

hans@starboardcre.com

CELL: 415-517-2589

CA DRE # 00872902

Call

View Profile



STARBOARD CRE
LOCAL • INDEPENDENT • ENTREPRENEURIAL



STARBOARD CRE
LOCAL • INDEPENDENT • ENTREPRENEURIAL

STARBOARDCRE.COM
OFC. PHONE 415.765.6900
49 POWELL STREET, SAN FRANCISCO, CA 94102



Unique Vision

We see what others miss

Local Market Leader

No one knows Northern
California like we do

Full-Service Firm

We do it all

Locally based, and technology-forward, our brokers are highly qualified experts backed by a full-service, in-house support team who understand the intricacies of San Francisco real estate. Starboard CRE brings decades of brokerage experience representing over 600 million square feet of space with an aggregate lease value of over 10 billion and investments sold over 3 billion.

CA DRE# 01103056

TCN
WORLDWIDE
REAL ESTATE SERVICES

AREA
ASSOCIATED REALTY OF THE AMERICAS