

# 710 Almondridge Drive

Rural Hall, North Carolina 27045

±446,818 SF Conditioned Industrial Building with Ample Trailer Parking in the North Forsyth Submarket



FOR LEASE

**CBRE**

# Property Overview

## 710 ALMONDRIDGE DRIVE

Situated in an established industrial park in North Forsyth County adjacent to Interstate 74, 710 AlmondrIDGE Drive boasts ease of access to the major arterial thoroughfares in the area including I-40, I-77, I-85 and I-73. This 446,818 SF industrial facility is located off of Northridge Park Drive in Rural Hall, North Carolina.

**446,818**

SF BUILDING

**35**

DOCK DOORS

**34'**

CLEAR HEIGHT

**ESFR**

SPRINKLER SYSTEM

**50' x 54'**

COLUMN SPACING



For Lease

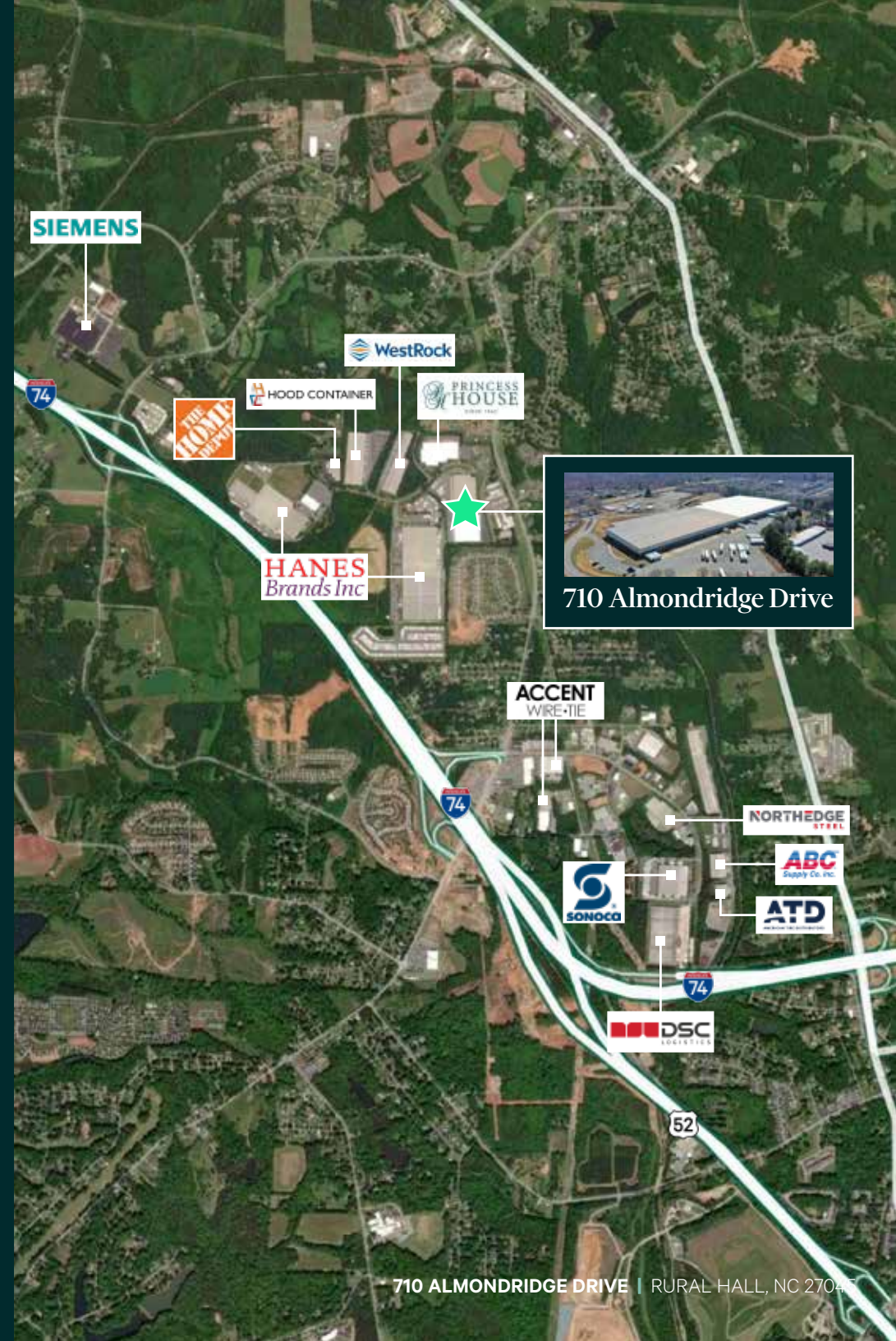
710 ALMONDRIDGE DRIVE | RURAL HALL, NC 27045



# Property Specifications

Building Size	±446,818 SF
Available SF	±200,000–446,818 SF
Parcel Size	33.03± AC
Office SF	±8,450 SF total approx. ±3,060 SF of finished office & 3 other ancillary office areas throughout the warehouse
Zoning	Light Industrial (LI)
Loading Docks	35 Dock High Doors & 1 Ground Level Door (12' x 12')
Dock Equipment	Locks, lights and manual levers
Construction Type	Steel frame, concrete block & metal panels
Clear Height	34'
Column Spacing	50' x 54'
Auto Parking	214 surface lot spaces (more if truck lot is used)
Trailer Parking	Ample
Warehouse Lighting	High Bay LED's with LED emergency & motion sensors throughout
HVAC	Fully Conditioned
Fire Protection	ESFR sprinkler
Power	Two (2) 2,000 amp feeds

For Lease



710 ALONDRIDGE DRIVE | RURAL HALL, NC 27045



# Ample Trailer Parking



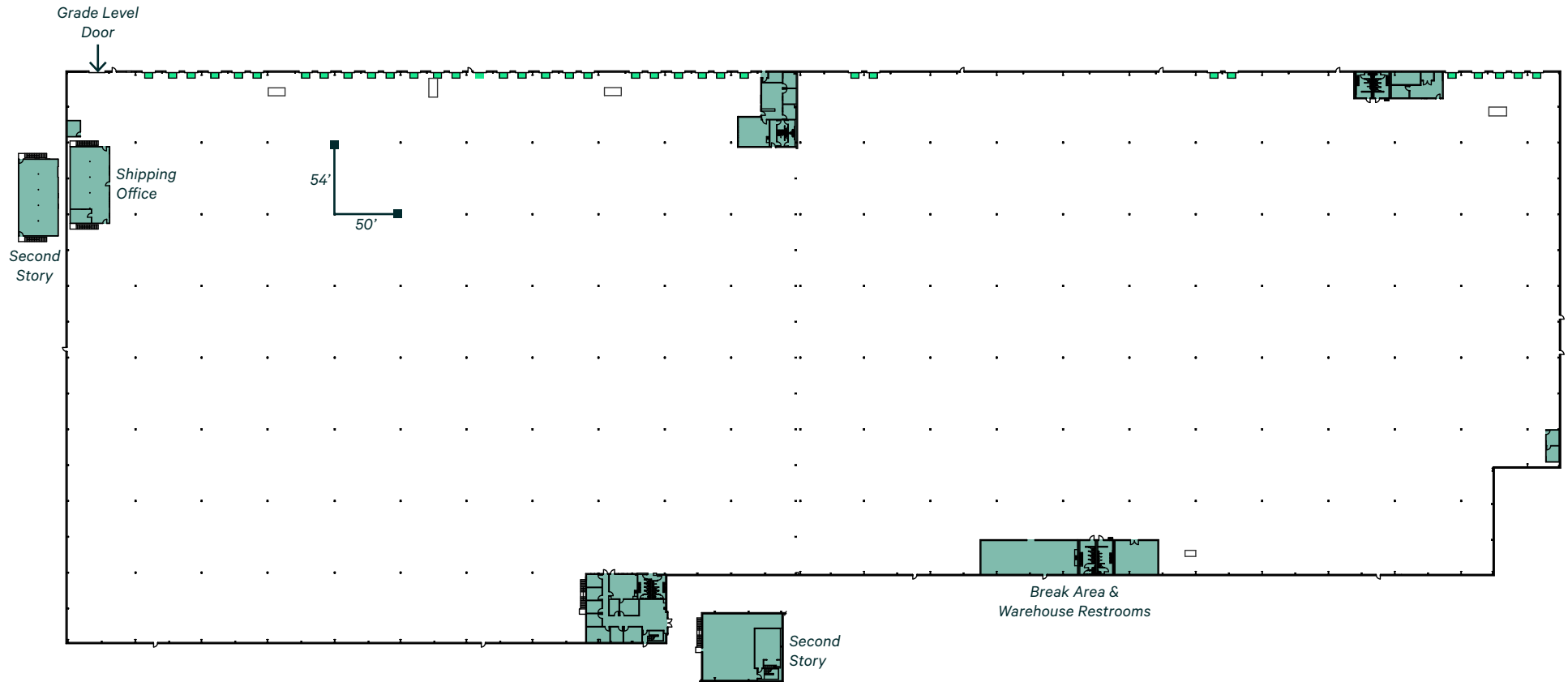
Additional Trailer  
Parking Area

Trailer Parking Adjacent  
to Loading Area

# Floor Plan

446,818 SF

AVAILABLE

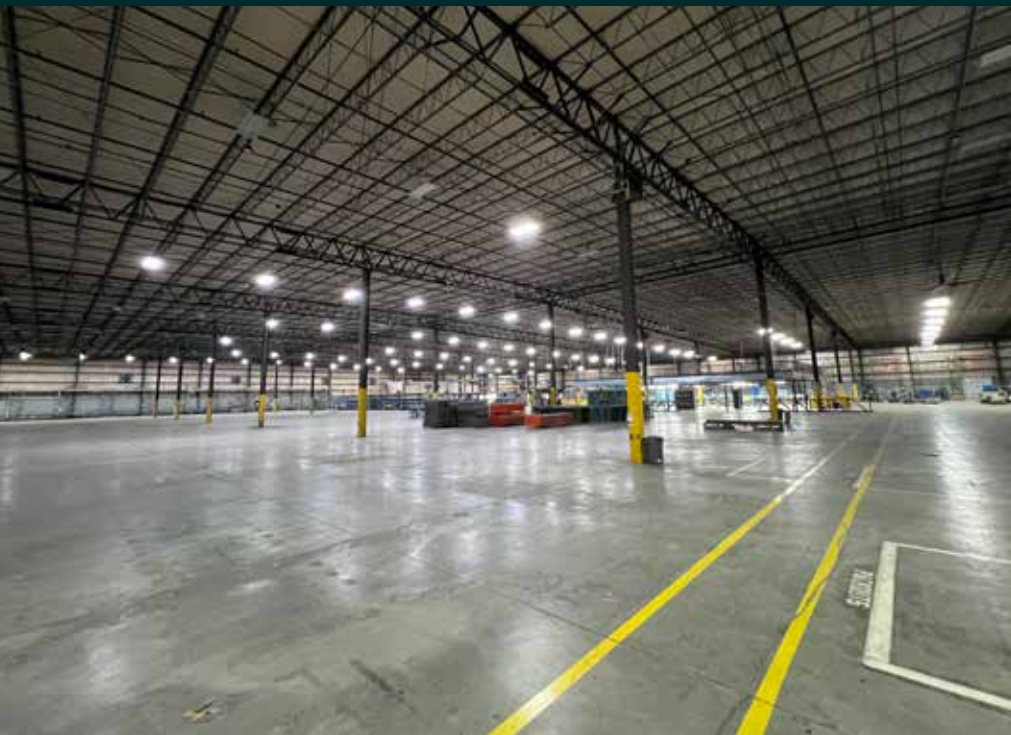


8,450 SF of Office Space    35 Loading Docks

For Lease

710 ALMONDRIDGE DRIVE | RURAL HALL, NC 27045





For Lease

710 ALMONDRIDGE DRIVE | RURAL HALL, NC 27045

# Excellent Location & Interstate Access

## WINSTON-SALEM NORTHERN BELTWAY

[www.ncdot.gov/projects/wsnb](http://www.ncdot.gov/projects/wsnb)

The N.C. Department of Transportation is building a multi-lane freeway that loops around the northern part of Winston-Salem.

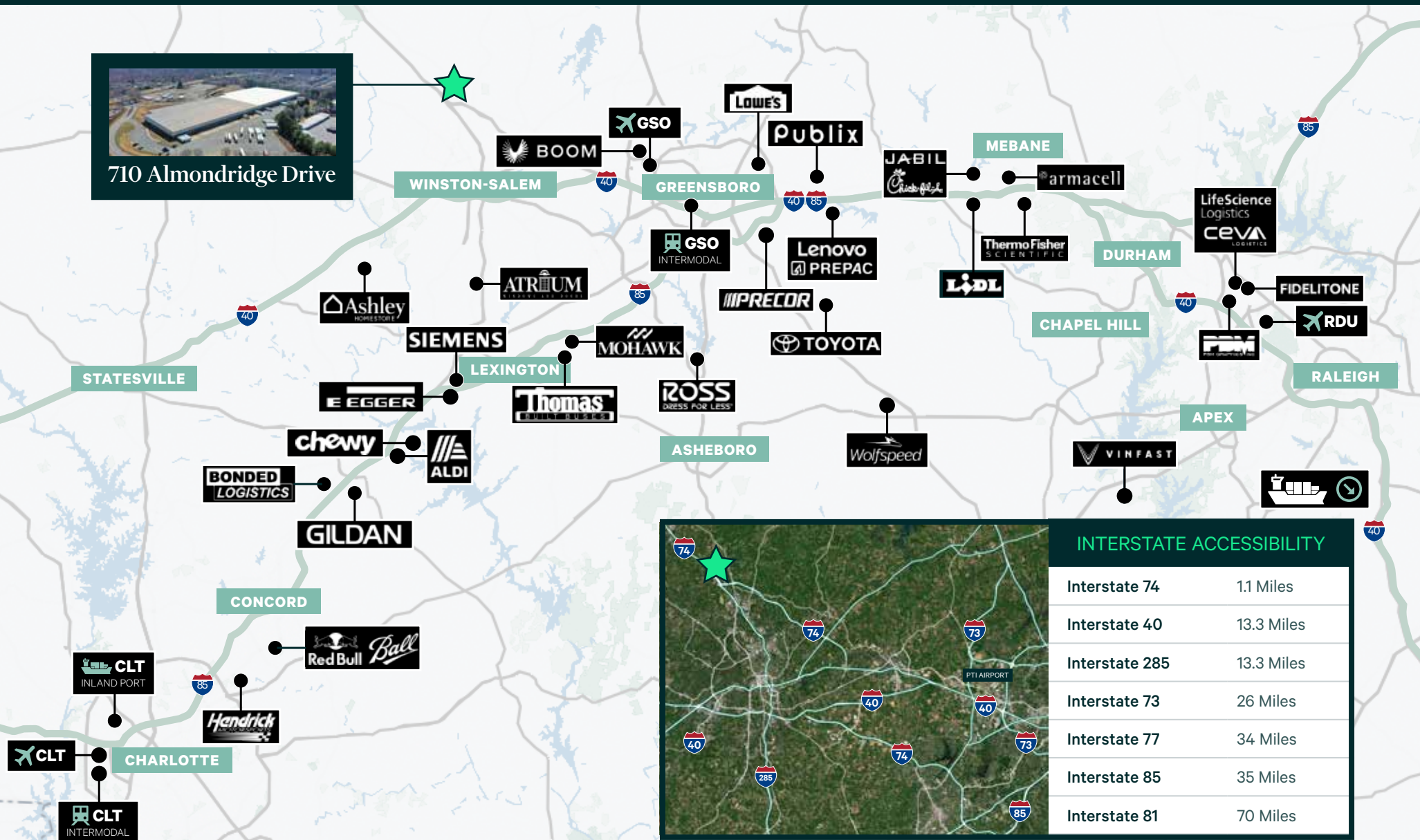
The 34.5-mile **Winston-Salem Northern Beltway** will begin at U.S. 158 southwest of Winston-Salem and end at I-74/U.S. 311 southeast of the city. The majority of the eastern part of the interchange has been completed or is near completion, with the western part of the loop set to begin construction this year. The final leg of the loop between I-40 and US-158 is scheduled to start construction in 2029.

About 100,000 vehicles and trucks travel through the area every day, which is more traffic than the roadways in the area are designed to handle. The Winston-Salem Northern Beltway will help alleviate congestion and improve safety along heavily traveled routes in Forsyth County, including U.S. 421/Business 40 and U.S. 52.





# Major North Carolina Distributors & Manufacturers





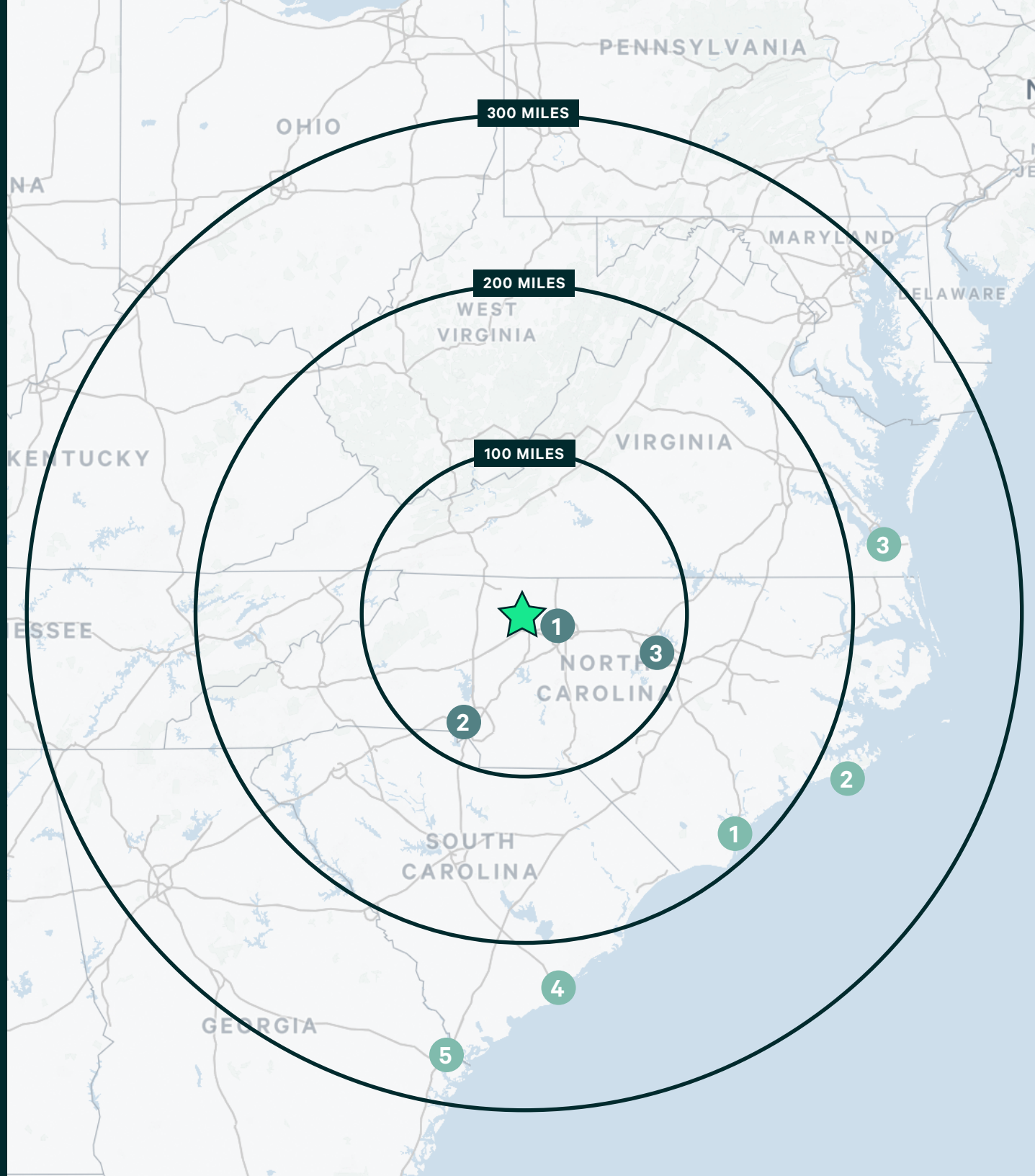
**710 Almondridge Drive** offers ease of access to major airports and seaports, with less than 100 mile to three international airports and less than 350 to five coastal ports.

## Airports

- 1** **PIEDMONT TRIAD INTERNATIONAL AIRPORT**  
30 Miles / 34min drive
- 2** **CHARLOTTE DOUGLAS INTERNATIONAL AIRPORT**  
93 Miles / 1hr 28min drive
- 3** **RALEIGH-DURHAM INTERNATIONAL AIRPORT**  
99 Miles / 1hr 34min drive

## Seaports

- 1** **PORT OF WILMINGTON, NC**  
243 Miles / 3hr 42min drive
- 2** **PORT OF MOREHEAD CITY, NC**  
258 Miles / 4hr 28min drive
- 3** **PORT OF NORFOLK, VA**  
268 Miles / 4hr 23min drive
- 4** **PORT OF CHARLESTON, SC**  
296 Miles / 4hr 45min drive
- 5** **PORT OF SAVANNAH, GA**  
339 Miles / 5hr 25min drive



# 710 Almondridge Drive

Rural Hall, North Carolina 27045



## CONTACTS

### Greg Wilson

Executive Vice President  
+1 336 331 9399  
[greg.wilson@cbre.com](mailto:greg.wilson@cbre.com)

### Will Henderson

Executive Vice President  
+1 336 544 2745  
[will.henderson@cbre.com](mailto:will.henderson@cbre.com)

© 2025 CBRE, Inc. All rights reserved. This information has been obtained from sources believed reliable but has not been verified for accuracy or completeness. CBRE, Inc. makes no guarantee, representation or warranty and accepts no responsibility or liability as to the accuracy, completeness, or reliability of the information contained herein. You should conduct a careful, independent investigation of the property and verify all information. Any reliance on this information is solely at your own risk. CBRE and the CBRE logo are service marks of CBRE, Inc. All other marks displayed on this document are the property of their respective owners, and the use of such marks does not imply any affiliation with or endorsement of CBRE. Photos herein are the property of their respective owners. Use of these images without the express written consent of the owner is prohibited.

# CBRE