

2625 RANDOLPH ST

Lincoln, NE 68510



PROPERTY DESCRIPTION

Prime commercial garage for lease available for only dry storage, two spacious overhead doors, and a dedicated parking lot. There is no water premises, however this space is ideal for businesses requiring secure storage. Don't miss this opportunity for versatile storage solutions in a convenient location in the center of Lincoln.

SPACES	LEASE RATE	SPACE SIZE
2625 Randolph St	\$5.00 SF/yr	2,400 SF

OFFERING SUMMARY

Lease Rate	\$5.00 SF/yr (NNN)
Number of Units	1
Total Available SF	2,400 SF
Lot Size	7,101 SF
Building Size	2,400 SF
NNN	\$1.50 / SF

DEMOGRAPHICS	0.25 MILES	0.5 MILES	1 MILE
Total Households	672	2,828	11,865
Total Population	1,356	5,612	22,963
Average HH Income	\$41,939	\$40,856	\$44,994



TOM GIFFORD
 Broker
 402.326.2413
 TjGifford@SpeedwayProperties.com

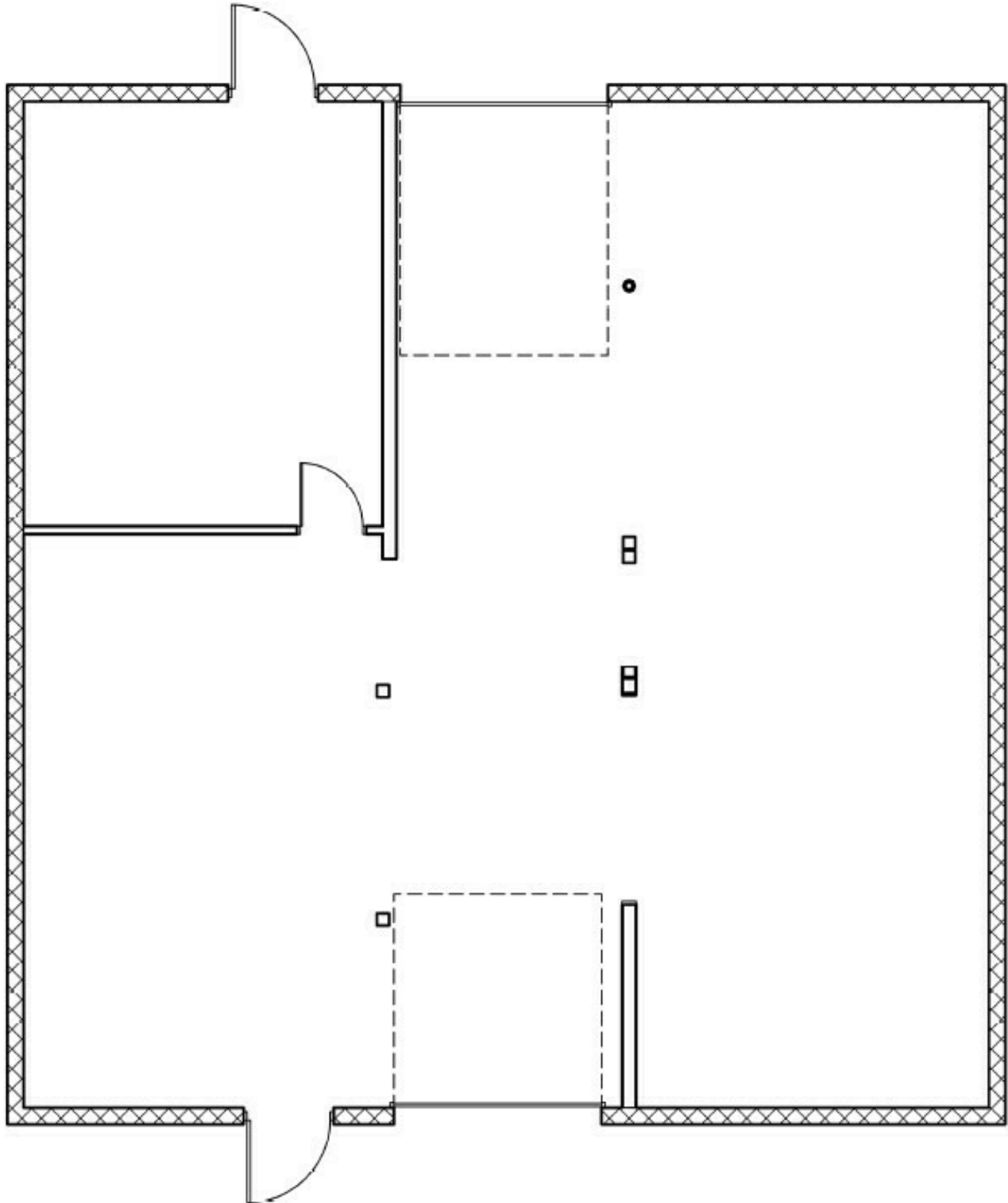


KALI KLASSEN
 Commercial Leasing Agent
 402.323.3123
 KmKlassen@SpeedwayProperties.com

Flex Space For Lease

2625 RANDOLPH ST

Lincoln, NE 68510



TOM GIFFORD
Broker
402.326.2413
TjGifford@SpeedwayProperties.com



KALI KLASSEN
Commercial Leasing Agent
402.323.3123
KmKlassen@SpeedwayProperties.com

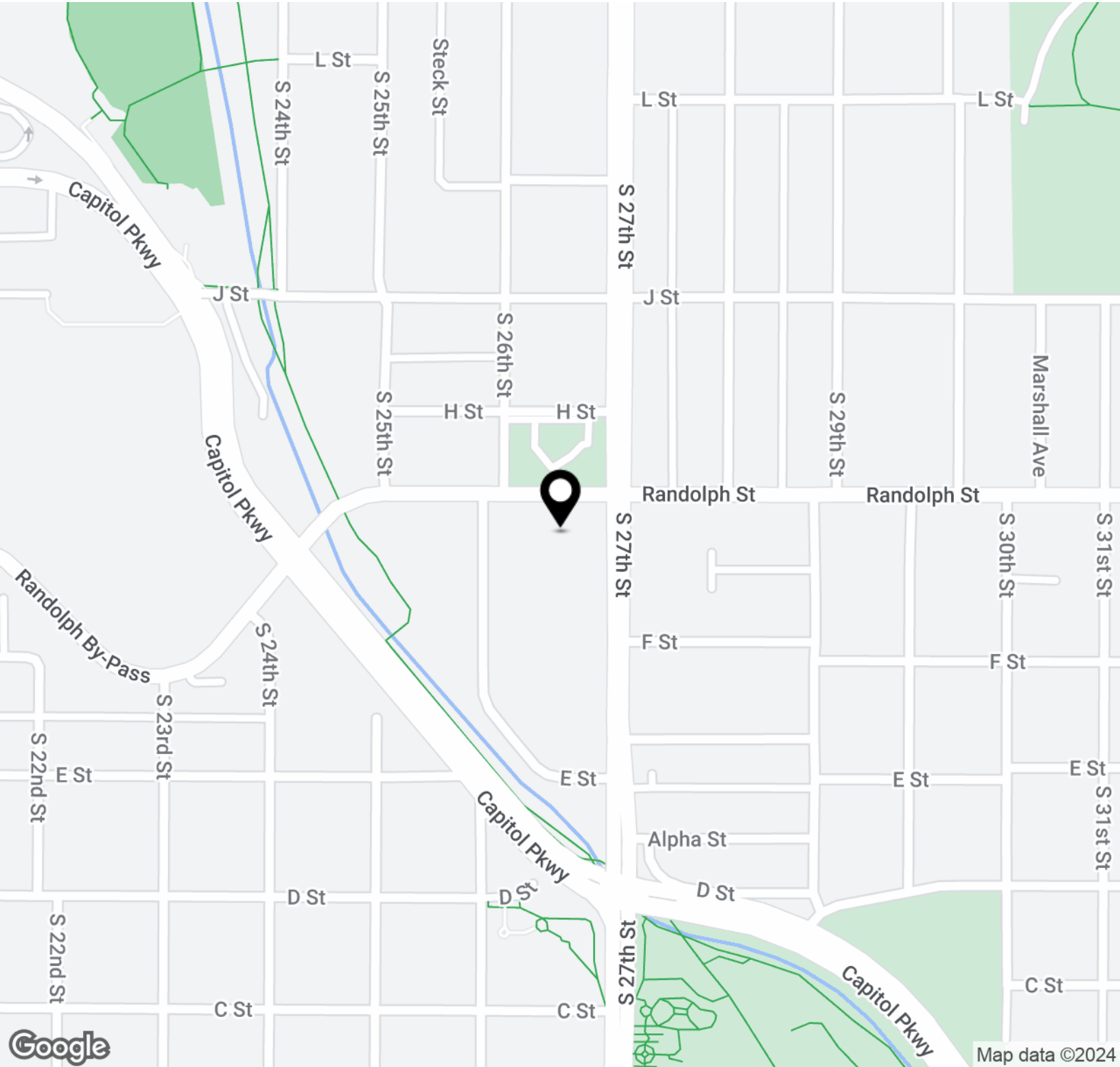


SpeedwayProperties.com

Flex Space For Lease

2625 RANDOLPH ST

Lincoln, NE 68510



TOM GIFFORD
Broker
402.326.2413
TjGifford@SpeedwayProperties.com



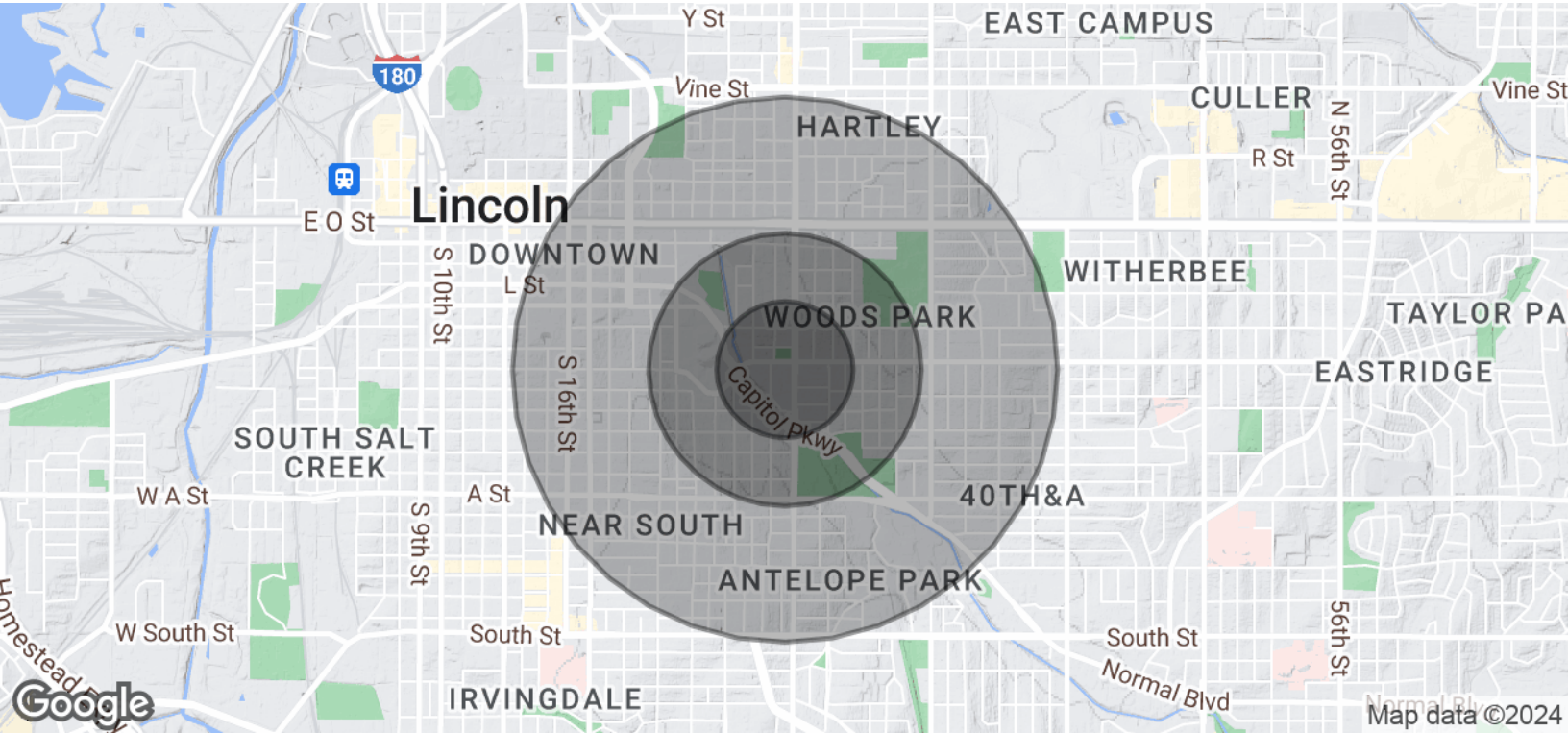
KALI KLASSEN
Commercial Leasing Agent
402.323.3123
KmKlassen@SpeedwayProperties.com



SpeedwayProperties.com

2625 RANDOLPH ST

Lincoln, NE 68510



POPULATION	0.25 MILES	0.5 MILES	1 MILE
Total Population	1,356	5,612	22,963
Average Age	29.2	27.9	30.6
Average Age (Male)	27.8	27.3	31.1
Average Age (Female)	32.9	30.0	30.8
HOUSEHOLDS & INCOME	0.25 MILES	0.5 MILES	1 MILE
Total Households	672	2,828	11,865
# of Persons per HH	2.0	2.0	1.9
Average HH Income	\$41,939	\$40,856	\$44,994
Average House Value	\$116,540	\$128,593	\$130,345

2020 American Community Survey (ACS)



TOM GIFFORD
Broker
402.326.2413
TjGifford@SpeedwayProperties.com



KALI KLASSEN
Commercial Leasing Agent
402.323.3123
KmKlassen@SpeedwayProperties.com