



For Lease | 1,125 - 2,250 SF Warehouse Space

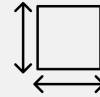
2280 Avocado Ave, Melbourne, FL 32935

Property Highlights:

- Fully renovated in 2022.
- Conveniently located just off US Hwy 1.
- Zoning & layouts ideal for businesses operating in light industrial industries.
- 12' x 14' grade-level loading doors for seamless material handling and deliveries.



Asking Rate:
Contact Broker for Pricing



Square Footage:
1,125 - 2,250 SF



Clear Height / Door:
16' Clear / 12' x 14' Drive-in



Parking Ratio:
1.46/1,000



Zoning:
M-1



**Scan to
Schedule
a Tour**

**FOR MORE INFORMATION
PLEASE CONTACT:**

Kevin Delarosa
407.761.6190
kdelarosa@kollektion.com

Shalini Hersowitz
954.254.0824
shersowitz@kollektion.com

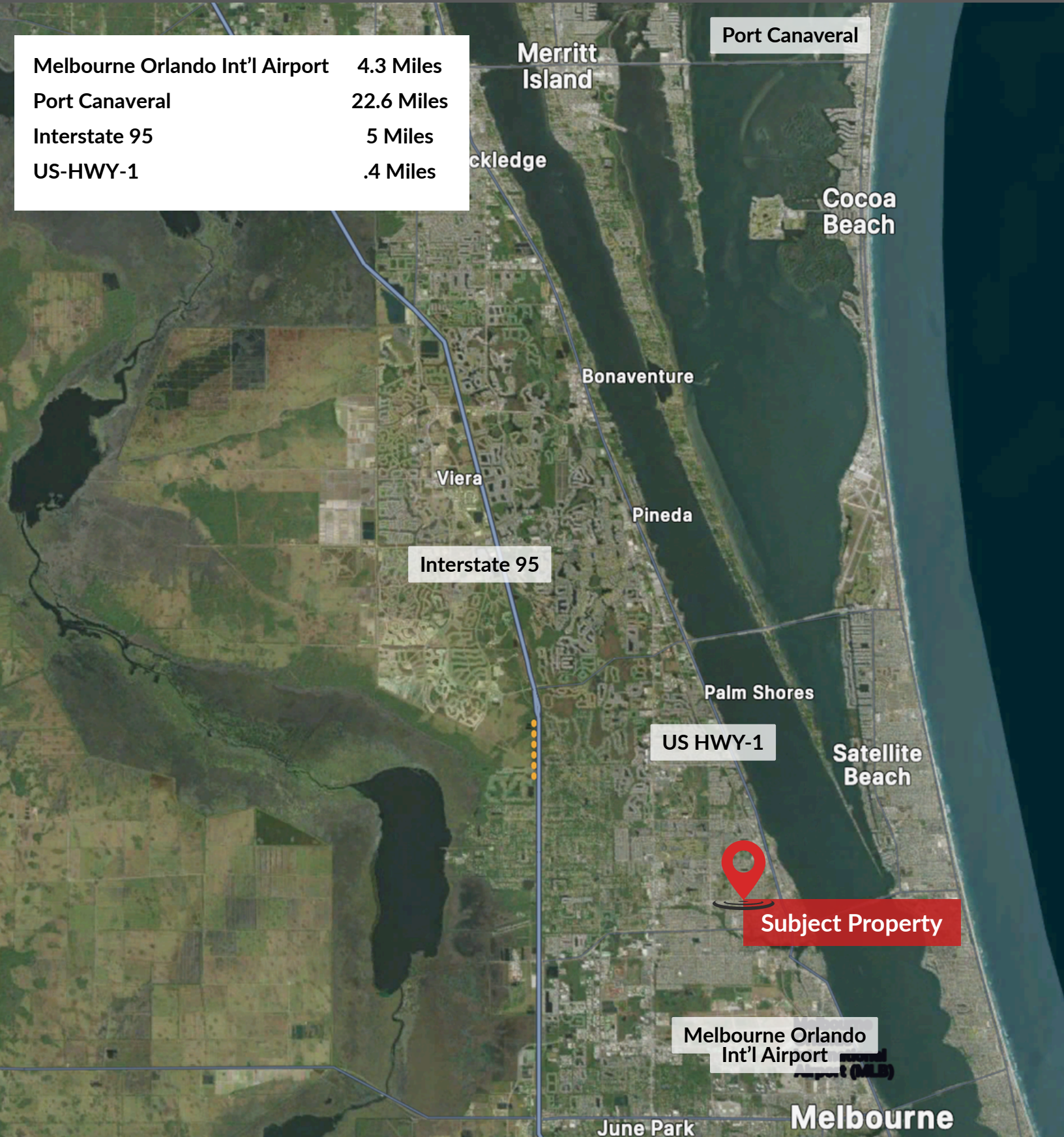
**COLLEKTION
PROPERTIES**

The information contained herein has been obtained from sources deemed reliable, however, Kollektion Properties makes no guarantees, warranties or representation as to its completeness or accuracy thereof. The presentation of this property is submitted subject to errors, omissions, change of price or conditions, prior to sale or lease or withdrawal without notice.

For Lease | 1,125 - 2,250 SF Warehouse Space

2280 Avocado Ave, Melbourne, FL 32935

Melbourne Orlando Int'l Airport	4.3 Miles
Port Canaveral	22.6 Miles
Interstate 95	5 Miles
US-HWY-1	.4 Miles



FOR MORE INFORMATION
PLEASE CONTACT:

Kevin Delarosa
407.761.6190
kdelarosa@kollektion.com

Shalini Hersowitz
954.254.0824
shersowitz@kollektion.com



The information contained herein has been obtained from sources deemed reliable, however, Kollektion Properties makes no guarantees, warranties or representation as to its completeness or accuracy thereof. The presentation of this property is submitted subject to errors, omissions, change of price or conditions, prior to sale or lease or withdrawal without notice.