



28301 Diehl Road | Warrenville, IL 60555

FOR LEASE
4,826 TOTAL SF

PROPERTY DETAILS

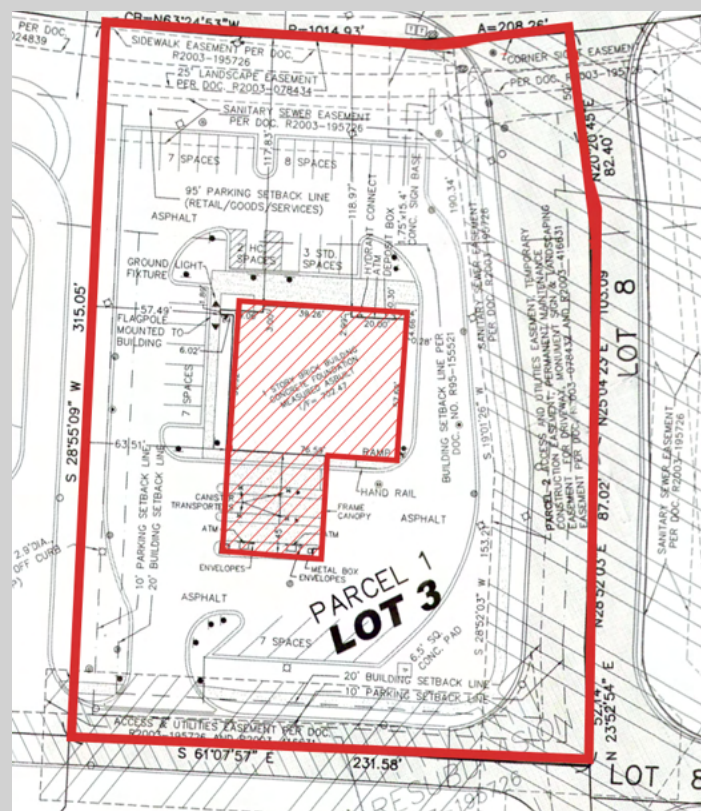
- Lot Size: 1.6186 acres
- County: DuPage



ECHO COMMERCIAL
REALTY, LTD.

DEMOGRAPHICS

	1 mi.	3 mi.	5 mi.
2022 Total Population	3,889	64,064	179,020
2027 Population	3,884	63,666	177,003
Pop. Growth 2022-2027	(0.13%)	(0.62%)	(1.13%)
Average Age	44	39	39
2022 Total Households	1,582	25,404	67,724
HH Growth 2022-2027	(0.13%)	(0.64%)	(1.22%)
Median Household Inc.	\$106,034	\$100,740	\$108,850
Avg. Household Size	2.40	2.40	2.60
2022 Avg HH Vehicles	2.00	2.00	2.00
Median Home Value	\$455,329	\$354,123	\$364,278
Median Year Built	1982	1982	1984



John Toliopoulos
Managing Broker
john@echocr.com

825 S. Cleveland Avenue
Arlington Heights, IL 60005
847.431.7384