



MISSION VILLAGE

SEC Alessandro Blvd & Mission Grove Pkwy, Riverside, CA



PROPERTY FEATURES

- New Construction Coming Soon
- Additional Shops and Retail Space Available
- Located in the Affluent Mission Grove Community, with an Estimated Household Income in excess of \$130,000 Per Year
- High Volume Grocery and Fitness Anchored Center
- Part of an ±70 AC Master Planned Open Air Retail Shopping Center
- Ideal for Upscale Retailers and Restaurants

2024 5 MILE DEMOGRAPHICS



Population
203,343



Average
HH Income
\$126,655



Daytime
Population
122,125



Alessandro
Blvd
39,955 CPD

Mission Grove
Pkwy
16,000 CPD



NICK WIRICK

951.669.1002 | DRE#: 01304661
NICK.WIRICK@SRSRE.COM

CHRIS BEAUCHAMP

951.669.1005 | DRE#: 01982753
CHRIS.BEAUCHAMP@SRSRE.COM

MIRANDA MONTGOMERY

951.669.1004 | DRE#: 02087985
MIRANDA.MONTGOMERY@SRSRE.COM

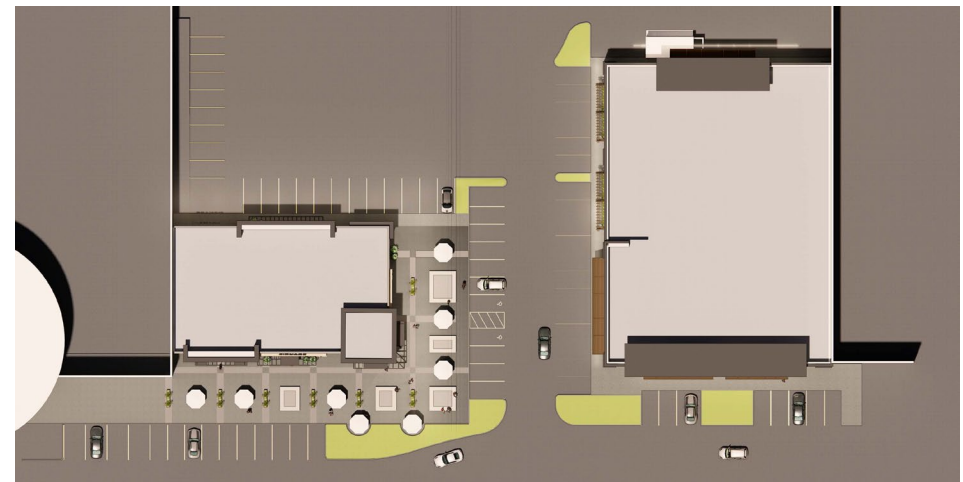
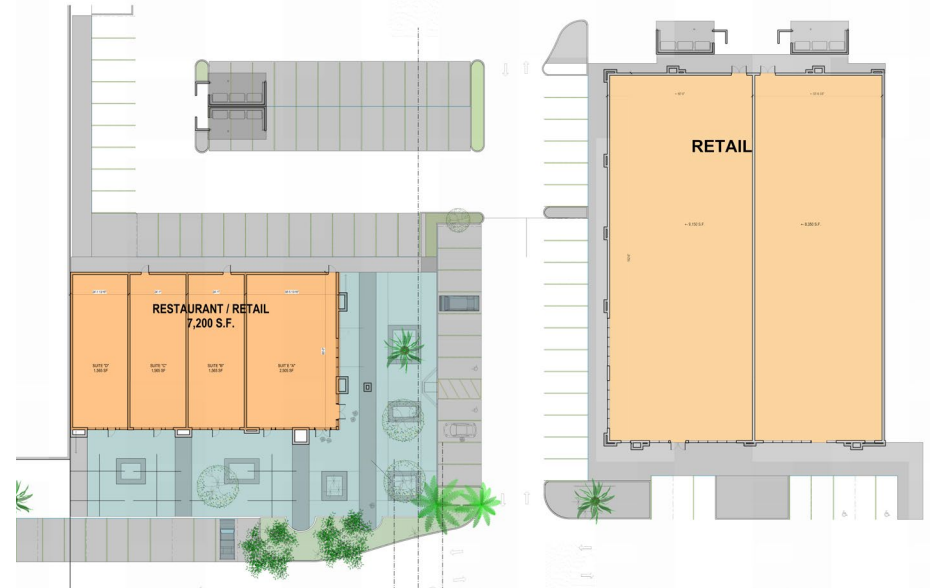


MISSION VILLAGE

SEC Alessandro Blvd & Mission Grove Pkwy, Riverside, CA



AVAILABILITIES	
SUITE	SF
SHOPS 1	±1,200 - 7,200
MAJOR B	±5,000 - 10,000
PAD E	±1,500



NICK WIRICK
 951.669.1002 | DRE#: 01304661
 NICK.WIRICK@SRSRE.COM

CHRIS BEAUCHAMP
 951.669.1005 | DRE#: 01982753
 CHRIS.BEAUCHAMP@SRSRE.COM

MIRANDA MONTGOMERY
 951.669.1004 | DRE#: 02087985
 MIRANDA.MONTGOMERY@SRSRE.COM

© SRS Real Estate Partners The information presented was obtained from sources deemed reliable; however SRS Real Estate Partners does not guarantee its completeness or accuracy.



MISSION VILLAGE

SEC Alessandro Blvd & Mission Grove Pkwy, Riverside, CA



NICK WIRICK

951.669.1002 | DRE#: 01304661
NICK.WIRICK@SRSRE.COM

CHRIS BEAUCHAMP

951.669.1005 | DRE#: 01982753
CHRIS.BEAUCHAMP@SRSRE.COM

MIRANDA MONTGOMERY

951.669.1004 | DRE#: 02087985
MIRANDA.MONTGOMERY@SRSRE.COM

© SRS Real Estate Partners The information presented was obtained from sources deemed reliable; however SRS Real Estate Partners does not guarantee its completeness or accuracy.



MISSION VILLAGE

SEC Alessandro Blvd & Mission Grove Pkwy, Riverside, CA



NICK WIRICK

951.669.1002 | DRE#: 01304661
NICK.WIRICK@SRSRE.COM

CHRIS BEAUCHAMP

951.669.1005 | DRE#: 01982753
CHRIS.BEAUCHAMP@SRSRE.COM

MIRANDA MONTGOMERY

951.669.1004 | DRE#: 02087985
MIRANDA.MONTGOMERY@SRSRE.COM

© SRS Real Estate Partners The information presented was obtained from sources deemed reliable; however SRS Real Estate Partners does not guarantee its completeness or accuracy.