

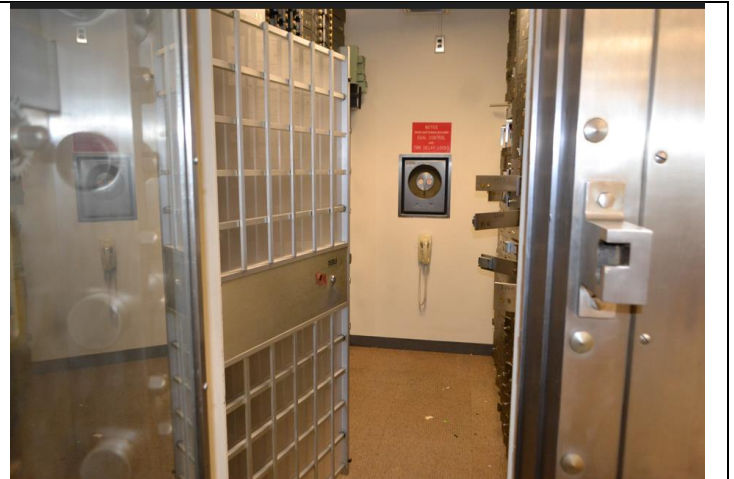


Real Estate Intelligence for
Intelligent Real Estate Decision Makers

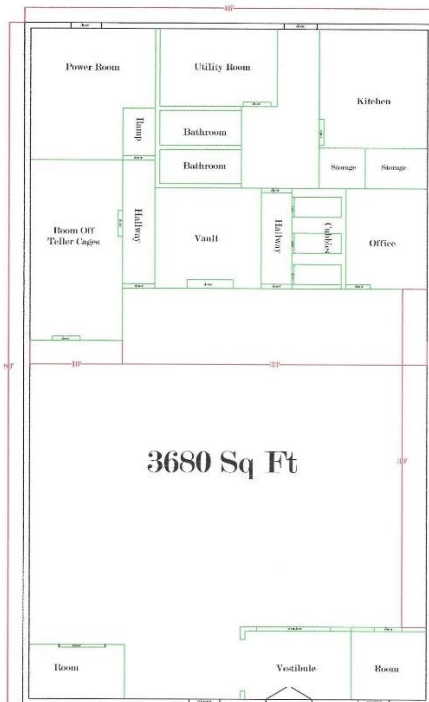
1335 E. Main St., Shrub Oak Shopping Center, Shrub Oak (Yorktown), NY

FOR LEASE: Traditional Bank Building – or use your *JMAGJNATION!*

Former Chase Bank branch; walk-in vault still intact. If you don't need a secure place for storing cash or family heirlooms, consider these creative reuses: rare wine cellar, humidor, changing room, mini art gallery, employee or customer coffee bar, super-private meeting space for the most confidential of conversations, library, or local history showcase.



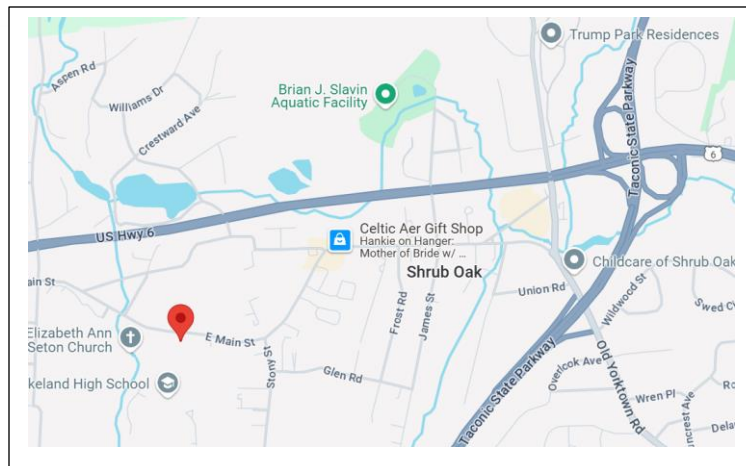
Seitz On Sites LLC
Rob Seitz, Broker of Record
4380 Vireo Ave., Unit 2-A, Bronx, NY 10470
914-393-6144/robseitz53@gmail.com



1335 East Main Street
Shrub Oak, NY 10588

**1335 E. Main St., Shrub Oak
Shrub Oak Shopping Center**

- Ask price: \$35/sq/ ft. MG
- RSF: 3,680
- Property Tax share: \$15,878.17 (as of Sept. 2024)
- End cap building
- Located in busy shopping center, anchored by Acme Supermarket
- Other tenants include Wells Fargo, U.S.P.S., pizzeria, nail salon and spa; laundromat and drycleaner
- Free parking for nearly 500 cars
- Propane heat; individually metered
- In close proximity to St. Elizabeth Ann Seton Catholic Church and Lakeland High School
- Minutes away to Taconic State Parkway, exit 20



**Real Estate Intelligence for
Intelligent Real Estate Decision Makers**

*Seitz On Sites LLC
Rob Seitz, Broker of Record
4380 Vireo Ave., Unit 2-A, Bronx, NY 10470
914-393-6144/robseitz53@gmail.com*