



# PRAIRIE CENTER OFFICE

450-490 E. ROOSEVELT RD | WEST CHICAGO, ILLINOIS

## UNITS AVAILABLE FOR LEASE



### HIGHLIGHTS

- > Individual units offer immediate occupancy
- > 3 building complex with future expansion opportunities
- > High profile
- > Energy Efficient
- > Two story entrance with marble and oak
- > Sound deadening barriers between suites
- > Located minutes from I-88
- > Build to suit land available

### PRICING

- > Lease Price: \$13.00 PSF Modified Gross



### AVAILABLE

Building	Suite	Total SF	Notes
450		Up to 10,147 SF	Available Now
480	202	2,538 SF	Newly Available



**RAWLY LANTZ, SIOR**  
 630.729.7944  
 rlantz@cawleycre.com

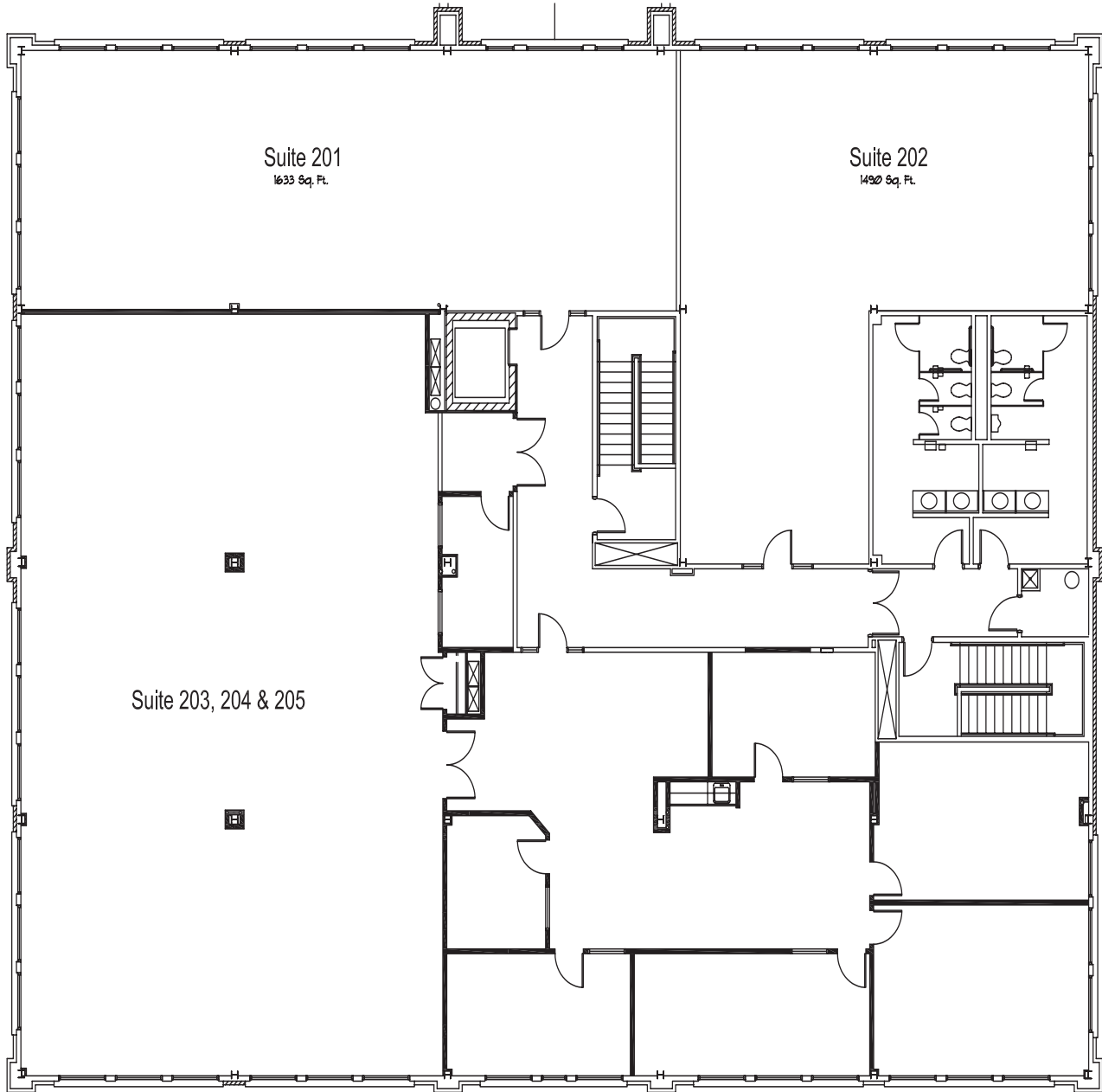
**JUSTIN HARRIS**  
 630.810.1897  
 jharris@cawleycre.com





# BUILDING 450 | FULL FLOOR

UP TO 10,147 SF



**RAWLY LANTZ, SIOR**  
630.729.7944  
rlantz@cawleycre.com

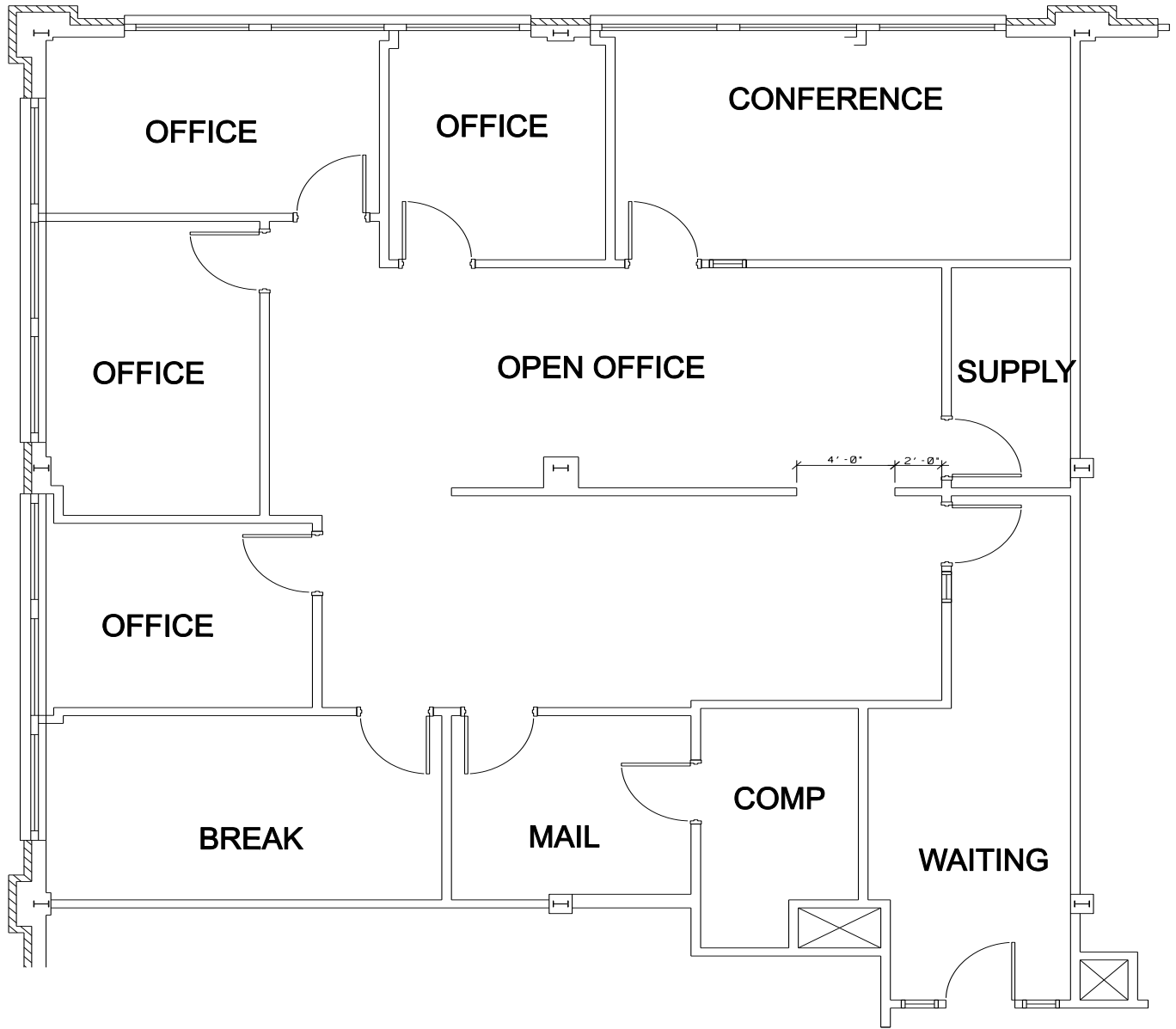
**JUSTIN HARRIS**  
630.810.1897  
jharris@cawleycre.com





# BUILDING 480 | 202

2,538 SF



**RAWLY LANTZ, SIOR**  
630.729.7944  
rlantz@cawleycre.com

**JUSTIN HARRIS**  
630.810.1897  
jharris@cawleycre.com

