

For Lease – 3 Suites Available

West Point Office Center

1101 McMurtrie Dr., Huntsville AL 35806

1,500 – 2,500 Sq Ft
Office Suites – For Lease



Location



Property Highlights

- Office buildings.
- Three Suites available 1,500-2,500 SF.
- Located near Research Park & Redstone Arsenal.
- Hotel, restaurant & shopping within walking distance.
- Near Midtowne on the Park, Providence & Bridge Street Town Centre.
- Professionally managed.
- CALL FOR PRICING

NAI Chase Commercial

Commercial Real Estate Services, Worldwide.

P.O. Box 18153, Huntsville, AL 35804
www.chasecommercial.com

Erik Amason

amasone@chasecommercial.com

C 256 319-2505

Randy Thomas

thomasr@chasecommercial.com

C 205 201-7309

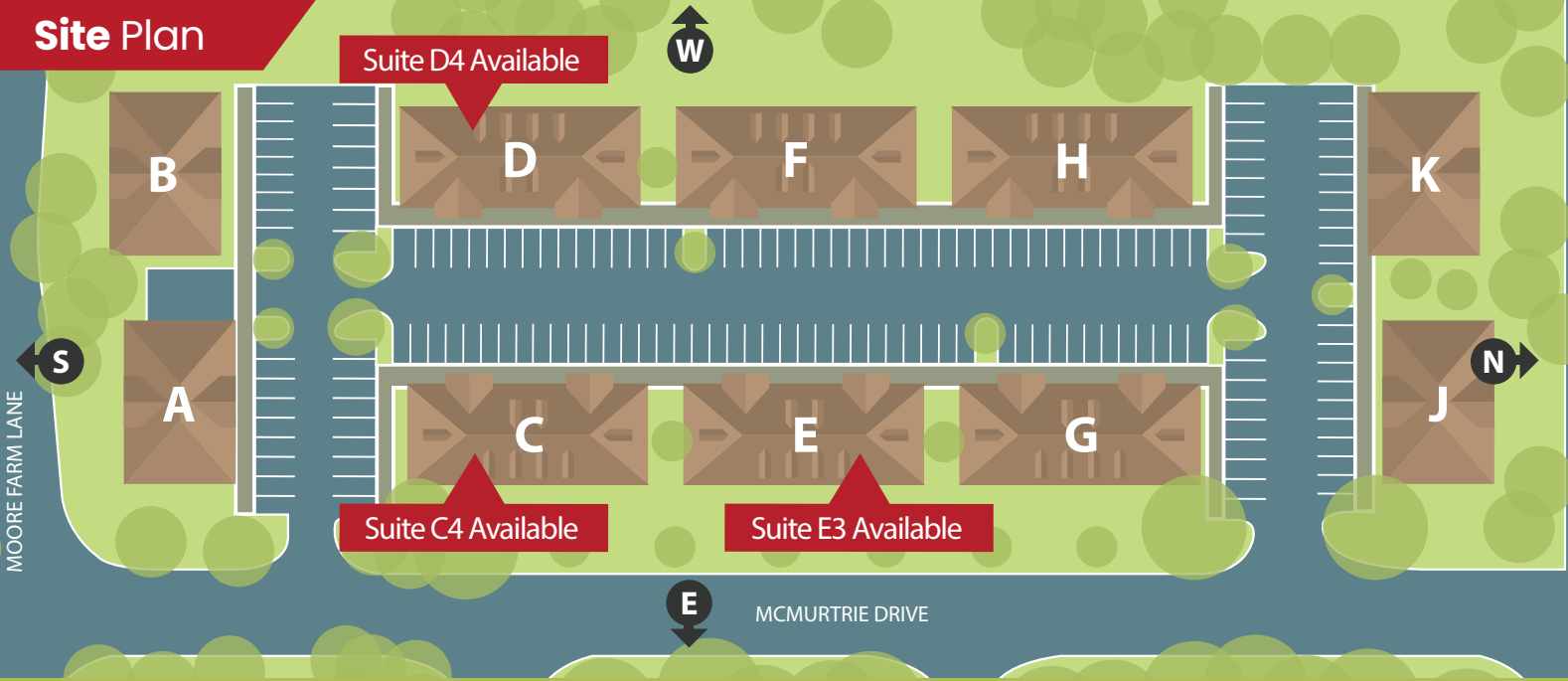
West Point Office Center

1101 McMurtrie Dr., Huntsville AL 35806

Office Suites
For Lease

3 Units
1,500-2,500^{SF}

Site Plan

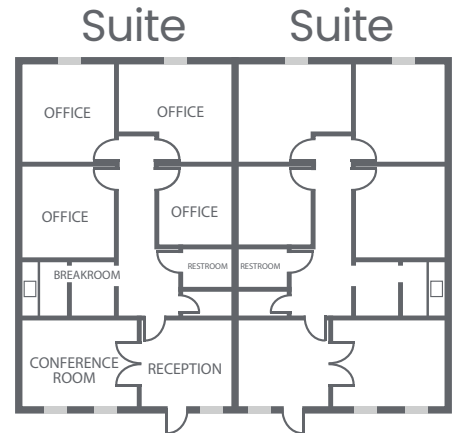


Building Description

West Point Office Center, an office complex that offers traditional American look and feel. Convenient access to Cummings Research Park, Redstone Arsenal, Bridge Street Town Centre, Target Center, Madison and Huntsville. All units have private entry and high quality construction and finish.

West Point Center is ideally located near Cummings Research Park, a business park with a workforce of approximately 23,000 employees. The center is adjacent to Westside Pavilion, a retail complex with over 475,000 SF of retail (Super Target) and restaurant space. There are numerous hotels located within walking distance of the center.

Sample Floor Plan



Interior Photos



NAI Chase Commercial
Commercial Real Estate Services, Worldwide.

P.O. Box 18153, Huntsville, AL 35804
www.chasecommercial.com



INDIVIDUAL MEMBERSHIPS

NO WARRANTY OR REPRESENTATION, EXPRESS OR IMPLIED, IS MADE AS TO THE ACCURACY OF THE INFORMATION CONTAINED HEREIN, AND THE SAME IS SUBMITTED SUBJECT TO ERRORS, OMISSIONS, CHANGE OF PRICE, RENTAL OR OTHER CONDITIONS, PRIOR SALE, LEASE OR FINANCING, OR WITHDRAWAL WITHOUT NOTICE, AND OF ANY SPECIAL LISTING CONDITIONS IMPOSED BY OUR PRINCIPAL. NO WARRANTIES OR REPRESENTATIONS ARE PROPERTY OR HAZARDS CONTAINED THEREIN.

West Point Office Center

1101 McMurtrie Dr., Huntsville AL 35806

Office Suites
For Lease

3 Units
1,500-2,500 SF

Area Amenities



More Information



For more information and to see other available properties, check out this listing at chasecommercial.com or scan the QR code on your mobile device.

Erik Amason C 256 319-2505
amasone@chasecommercial.com

Randy Thomas C 205 201-7309
thomasr@chasecommercial.com

NAI Chase Commercial
Commercial Real Estate Services, Worldwide.

P.O. Box 18153, Huntsville, AL 35804
www.chasecommercial.com



INDIVIDUAL MEMBERSHIPS

NO WARRANTY OR REPRESENTATION, EXPRESS OR IMPLIED, IS MADE AS TO THE ACCURACY OF THE INFORMATION CONTAINED HEREIN, AND THE SAME IS SUBMITTED SUBJECT TO ERRORS, OMISSIONS, CHANGE OF PRICE, RENTAL OR OTHER CONDITIONS, PRIOR SALE, LEASE OR FINANCING, OR WITHDRAWAL WITHOUT NOTICE, AND OF ANY SPECIAL LISTING CONDITIONS IMPOSED BY OUR PRINCIPAL. NO WARRANTIES OR REPRESENTATIONS ARE PROPERTY OR HAZARDS CONTAINED THEREIN.

West Point Office Center

1101 McMurtrie Dr., Huntsville AL 35806

Office Suites
For Lease

3 Units
1,500-2,500^{SF}

Area Employers



More Information



For more information and to see other available properties, check out this listing at [chasecommercial.com](https://www.chasecommercial.com) or scan the QR code on your mobile device.

Erik Amason C 256 319-2505
amasone@chasecommercial.com

Randy Thomas C 205 201-7309
thomasr@chasecommercial.com

NAI Chase Commercial
Commercial Real Estate Services, Worldwide.

P.O. Box 18153, Huntsville, AL 35804
www.chasecommercial.com



INDIVIDUAL MEMBERSHIPS

NO WARRANTY OR REPRESENTATION, EXPRESS OR IMPLIED, IS MADE AS TO THE ACCURACY OF THE INFORMATION CONTAINED HEREIN, AND THE SAME IS SUBMITTED SUBJECT TO ERRORS, OMISSIONS, CHANGE OF PRICE, RENTAL OR OTHER CONDITIONS, PRIOR SALE, LEASE OR FINANCING, OR WITHDRAWAL WITHOUT NOTICE, AND OF ANY SPECIAL LISTING CONDITIONS IMPOSED BY OUR PRINCIPAL. NO WARRANTIES OR REPRESENTATIONS ARE PROPERTY OR HAZARDS CONTAINED THEREIN.

West Point Office Center

1101 McMurtrie Dr., Huntsville AL 35806

Office Suites
For Lease

3 Units
1,500-2,500^{SF}

About the Huntsville Area

Military, telecommunications, biotechnology, space, diversified manufacturing and many emerging specialties provide challenging work in delightful surroundings. The area enjoys a favorable cost of living and quality of life. Mountains, lakes, woodlands and the Tennessee River accommodate numerous recreational activities. A temperate climate enhances the season for outdoor sports, including world-class golf, hiking, biking, and fishing. Major concerts, Broadway and symphony performances, extensive permanent art collections and traveling exhibitions contribute to a wonderful way of life.



Economic Impacts



As the second largest research and technology park in the U.S. and the fourth largest in the world, the 3,843-acre CRP campus just north of Redstone Arsenal is home to nearly 300 companies, 27,000+ employees, and 12,500+ students. Anchored by Fortune 1000 giants Boeing (2,900 employed), SAIC (2,746), Northrop Grumman (1,100), and Lockheed Martin (764) the park is populated with a vibrant mix of local and international high-tech companies. U.S. space and defense agencies, a thriving business incubator, and competitive higher-education institutions.



With over \$50 billion in annual contracts, Redstone Arsenal is a major federal research, development, test, and engineering center located on a 38,125-acre, secure U.S. Army complex in southwest Huntsville. No longer just a U.S. Army base, but a diverse Federal Campus, Redstone is home to over 70 different federal organizations and contractor operations. Redstone Arsenal has a total economic impact of \$30 billion annual, accounting for a large portion of Alabama's Gross Domestic Product.

Economic Impacts



"#3 Best Place to Live in the U.S."



"Future of Tech is in These Three Cities, Including Huntsville"



"Best Place to Live for America's New Tech Hubs"



"#1 Best City for STEM Workers in America"



"Job market is #11 in the nation"

Growth Potential

50,000+

Projected Population
Growth 2021 - 2025

30,000+

Projected Employment
Growth 2021 - 2025