

# Livermore Airway Business Park

TERRENCE J. ROSE, INC.  
REAL ESTATE

INVESTMENT & DEVELOPMENT

L I V E R M O R E , C A L I F O R N I A



## 490 Lindbergh Ave.

**Project 11**  
**Building 1**  
430+/- Sq. Ft.

**Office Space**  
**for Lease**

- Convenient I-580 & Hwy 84 Accessibility
- On-Site Property Management
- Unit Size 430+/- Sq. Ft.
- 2 Parking Stalls Included
- Tenant Controlled HVAC
- Nearby Yard Availability
- Unique Small Office Space
- Comcast & AT&T Availability
- Fire Sprinklered
- 110/208v, 3-Phase Power
- Nearby Tenant Services, Restaurants, Wineries, Golf Course, Tower-Controlled Airport, 24 Hour Fitness

For Information Contact:

**Jennifer Walker / Laurie Smith**

Phone 925 455 1234 • Fax 925 455 1546

E-Mail: [jwalker@tjrinc.com](mailto:jwalker@tjrinc.com) / [lsmith@tjrinc.com](mailto:lsmith@tjrinc.com)

Website: [www.tjrinc.com](http://www.tjrinc.com)

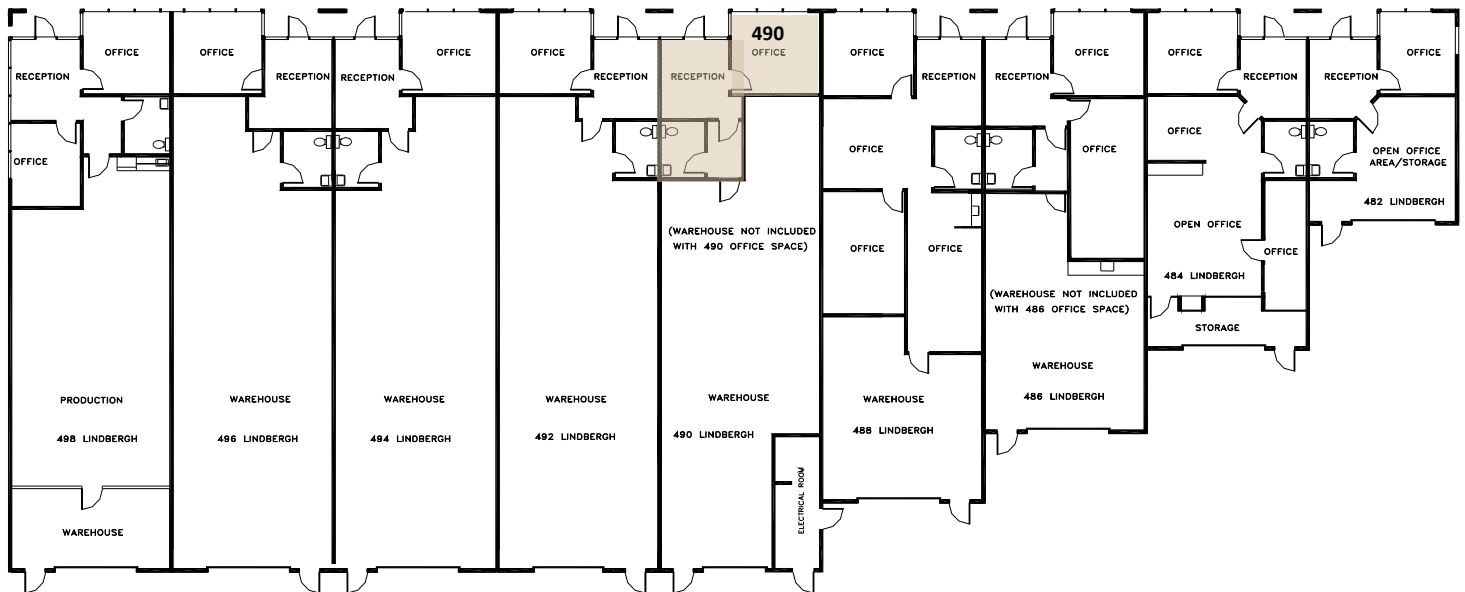
2600 Kitty Hawk Road, Suite 100, Livermore, California 94551

# Project 11 – Building 1 – 490 Lindbergh Ave.

L I V E R M O R E , C A L I F O R N I A

## Building Floor Plan

430+/- Sq. Ft.



(Floor plan accuracy not warranted and may be changed or updated without notice.)

## Available Space

490 Lindbergh Ave. – 430+/- Sq. Ft. – \$2.50/Sq. Ft., MFS

(\*3 year lease term required. Quoted rates are for spaces AS-IS. Rates, terms, and availability subject to change or withdrawal without notice.)

## Map



TERRENCE J. ROSE, INC.  
REAL ESTATE

INVESTMENT & DEVELOPMENT

For Information Contact:

**Jennifer Walker / Laurie Smith**

Phone 925 455 1234 • Fax 925 455 1546

E-Mail: [jwalker@tjinc.com](mailto:jwalker@tjinc.com) / [lsmith@tjinc.com](mailto:lsmith@tjinc.com)

Website: [www.tjinc.com](http://www.tjinc.com)

2600 Kitty Hawk Road, Suite 100, Livermore, California 94551