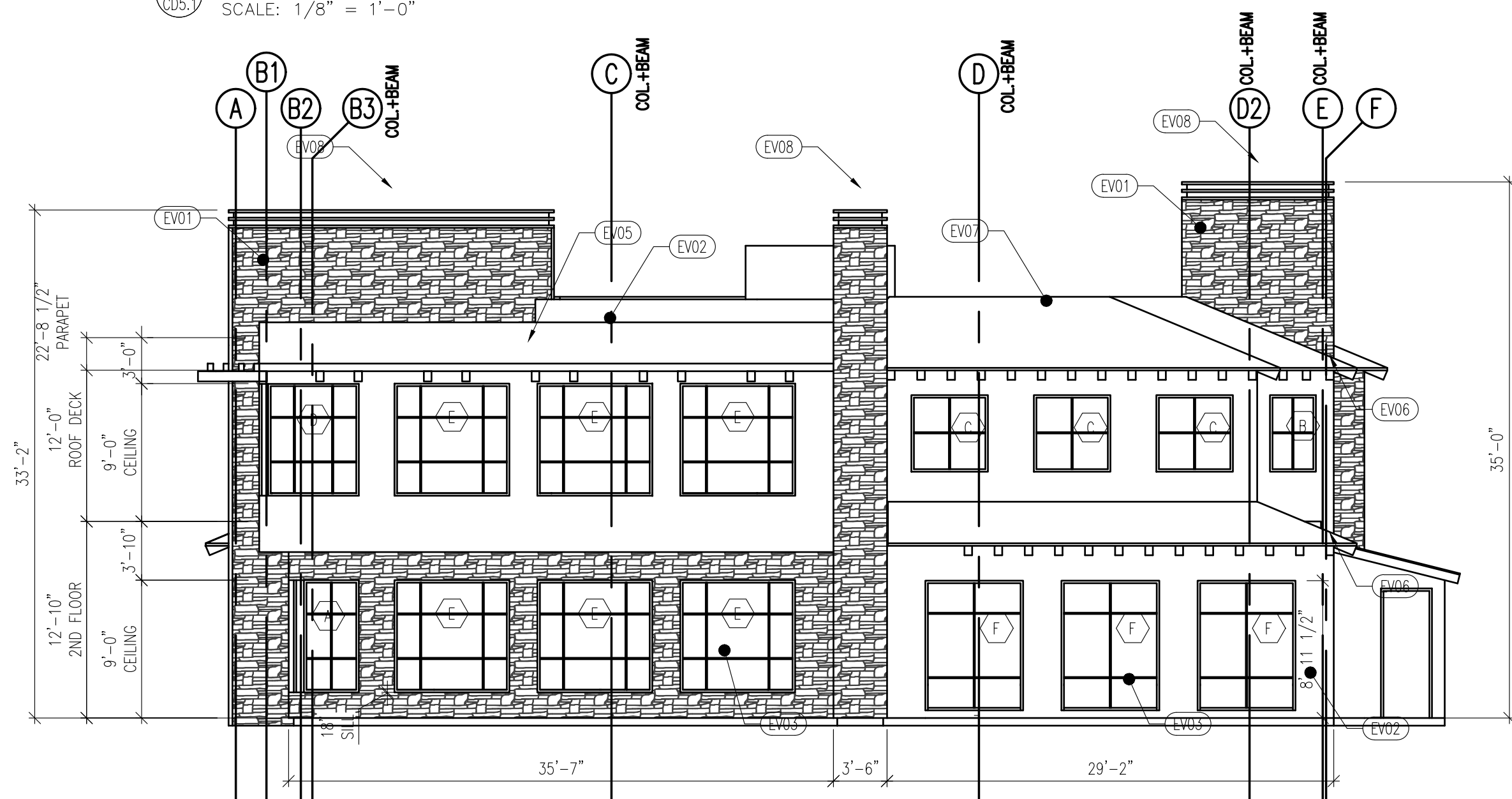
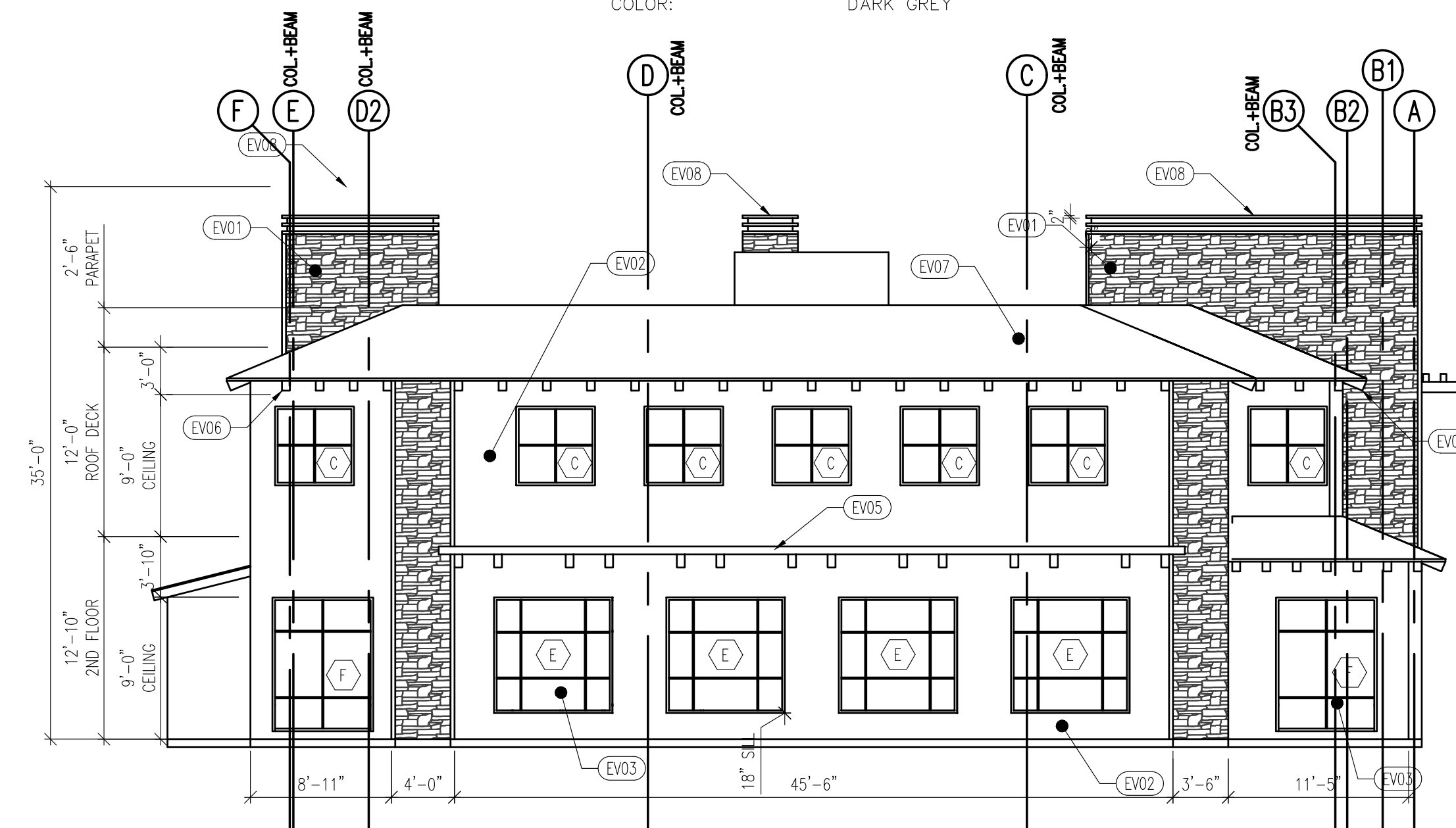


**PROPOSED ELEVATION - WEST**  
SCALE: 1/8" = 1'-0"



**PROPOSED ELEVATION - SOUTH**  
SCALE: 1/8" = 1'-0"



**PROPOSED ELEVATION - NORTH**  
SCALE: 1/8" = 1'-0"



**PROPOSED ELEVATION - EAST**  
SCALE: 1/8" = 1'-0"

**ELEVATION KEYNOTES**

- (EV01) STONE VENEER: CORONADO COUNTRY RUBBLE TEXAS CREAM  
MANUFACTURER: CORONADO  
STACK: COUNTRY RUBBLE  
COLOR: TEXAS CREAM
- (EV02) STUCCO: LA HABRA OR EQUAL  
TEXTURE: SMOOTH SANTA BARBARA FINISH  
COLOR: INTEGRAL OMEGA COLOR TEK, OMEGA WHITE NO. 10
- (EV03) WINDOW: ARCADIA OR EQUAL  
FRAME MANUFACTURER: ARCADIA OR EQUAL  
FRAME COLOR: BLACK  
GLASS MANUFACTURER: VITRO GLASS OR EQUAL  
GLASS THICKNESS: DUAL PANE  
GLASS COLOR: CLEAR
- (EV04) DOOR: ARCADIA OR EQUAL  
FRAME MANUFACTURER: ARCADIA OR EQUAL  
FRAME COLOR: BLACK  
GLASS MANUFACTURER: VITRO GLASS OR EQUAL  
GLASS THICKNESS: DUAL PANE  
GLASS COLOR: CLEAR
- (EV05) CANTILEVERED AWNING: KNOTWOOD OR EQUAL  
MANUFACTURER: KNOTWOOD OR EQUAL  
MATERIAL: METAL  
COLOR: TEAK BROWN WOODGRAIN
- (EV06) RAFTER TAIL: WOOD  
MATERIAL: MATCH KNOTWOOD TEAK BROWN  
COLOR: CANTILEVERED AWNING
- (EV07) ROOFING: BERRIDGE OR EQUAL  
MANUFACTURER: BERRIDGE OR EQUAL  
COLOR: CITYSCAPE  
FORM: SS-14 TEE-PANEL
- (EV08) DECORATIVE METAL CAP: COVERED  
MANUFACTURER: METAL  
MATERIAL: METAL  
COLOR: DARK GREY

REVISIONS:

NO.	DESCRIPTION	DATE

**MEDICAL OFFICE BUILDING**  
**420 PENNSFIELD PLACE**  
**THOUSAND OAKS, CALIFORNIA**  
APN: 669-0-021-080

PROJECT NUMBER:

2021.10

SHEET NAME:

EXTERIOR ELEVATIONS

SHEET NUMBER:

CD5.1