



±336 - 4,800 SF
AVAILABLE
 1725-1745 S Rainbow Blvd
 Las Vegas, NV 89146



1725-1745



CALL US FOR
MORE INFO

DAN ADAMSON
 702.550.4934 | dan@roicre.com
 Lic # B.0026992.CORP

CHRIS WALDBURGER, CCIM
 702.483.3683 | chris@roicre.com
 Lic # S.0190814



roicre.com

PROPERTY HIGHLIGHTS

RAINBOW OAKLEY PLAZA
1725-1745 S Rainbow Blvd
Las Vegas, NV 89146

±336 - 4,800 SF AVAILABLE

- Anchored by Shoe Palace
- Frontage and access on Rainbow Blvd
- Recently painted shopping center
- Covered parking in the rear
- Easy access to major arterials like Charleston Blvd, Sahara Ave, and Summerlin Pkwy
- Located in a strong retail corridor

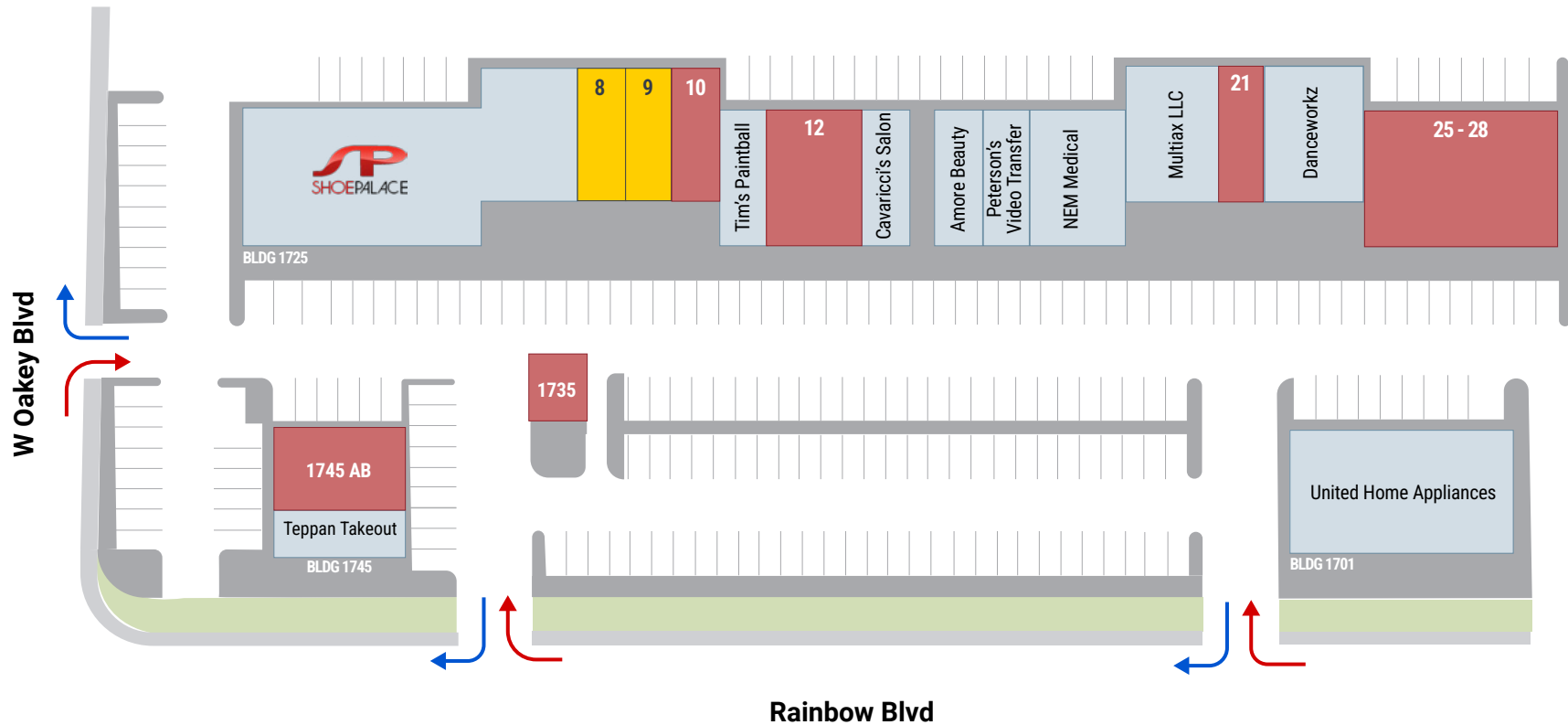
 **LIMITED COMMERCIAL (C-1)**
ZONING

 **163-03-603-011**
APN



PROPERTY SITE PLAN

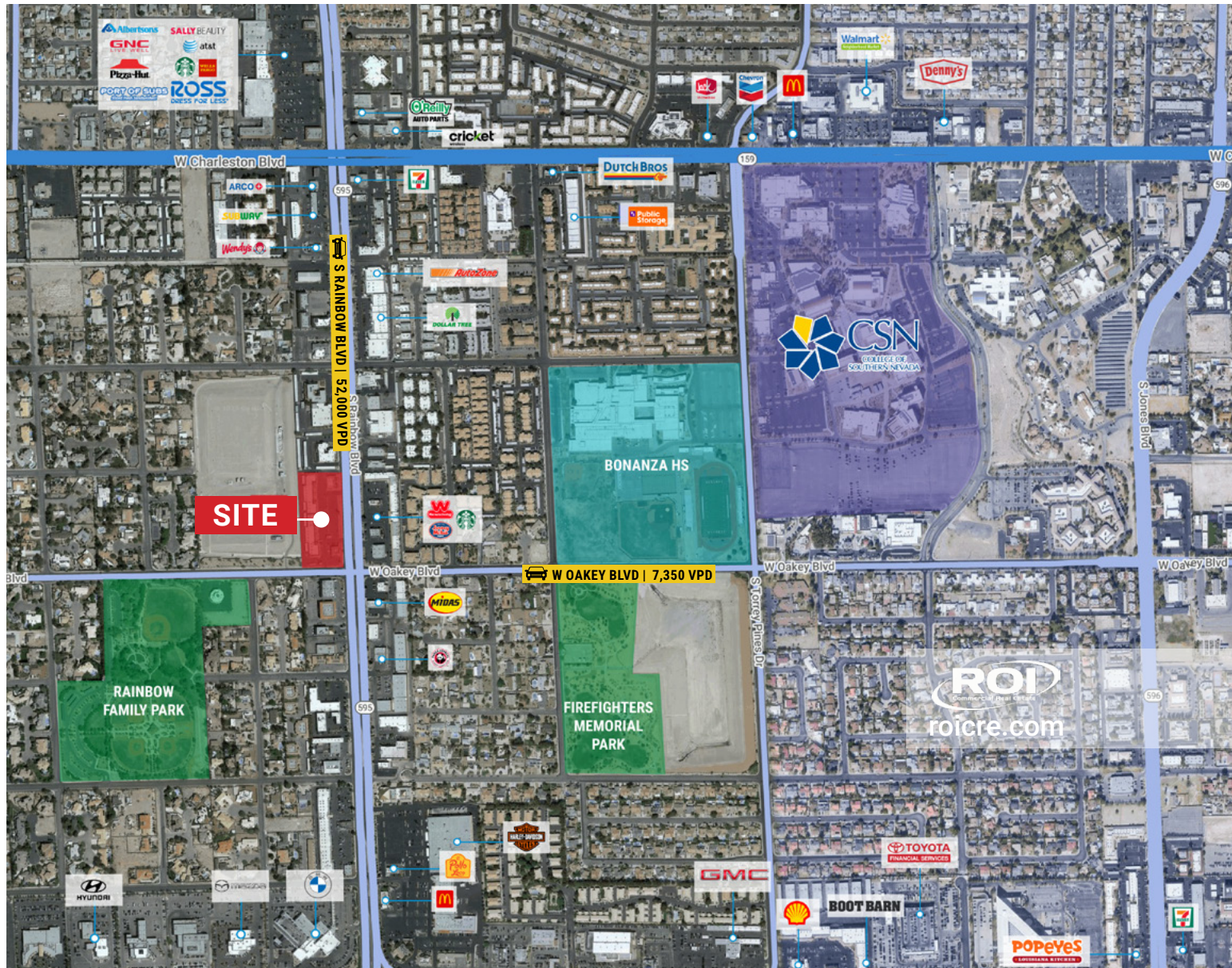
RAINBOW OAKLEY PLAZA
1725-1745 S Rainbow Blvd
Las Vegas, NV 89146



Suite	Tenant	Size (SF)	Suite	Tenant	Size (SF)	Suite	Tenant	Size (SF)
1-7	Shoe Palace	± 8,400	15	Amore Beauty	± 1,200	25-28	AVAILABLE	± 4,800
08	NEGOTIATING	± 1,200	16	Peterson's Video Transfer	± 1,200	1701	United Home Appliances	± 5,040
09	NEGOTIATING	± 1,200	17-18	NEM Medical	± 2,400	1735	AVAILABLE	± 336
10	AVAILABLE	± 1,200	19-20	Multiax LLC	± 2,242	1745 AB	AVAILABLE	± 1,700
11	Tim's Paintball	± 1,200	21	AVAILABLE	± 1,288	1745 C	Teppan Takeout	± 1,300
12	AVAILABLE	± 1,800	22-24	Danceworkz	± 3,600			
13-14	Cavaricci's Salon	± 1,800						

IMMEDIATE AREA AERIAL

RAINBOW OAKLEY PLAZA
1725-1745 S Rainbow Blvd
Las Vegas, NV 89146



TRADE AREA AERIAL

RAINBOW OAKLEY PLAZA
1725-1745 S Rainbow Blvd
Las Vegas, NV 89146



AREA DEMOGRAPHICS



POPULATION

1 Mile	3 Miles	5 Miles
14,700	188,521	476,557



AVERAGE HOUSEHOLD INCOME

1 Mile	3 Miles	5 Miles
\$112,291	\$89,670	\$100,864



TRAFFIC COUNTS

Rainbow BLvd	Oakey Blvd
50,000 VPD	3,850 VPD

Sources:
 SitesUSA 2025
 TRINA, NV DOT 2024





www.roicre.com



9121 W Russell Rd
Suite 111
Las Vegas, NV 89148

FOR MORE INFORMATION

DAN ADAMSON



702.550.4934



dan@roicre.com



NV Lic# B.0026992.CORP

CHRIS WALDBURGER, CCIM



702.483.3683



chris@roicre.com



NV Lic S.0190814

Let's Stay Connected!



[roicre](https://www.facebook.com/roicre)



[@roi.cre](https://www.instagram.com/@roi.cre)



[roicre/](https://www.linkedin.com/company/roicre/)

DISCLAIMER

All information contained herein is from sources we deem reliable, and we have no reason to doubt its accuracy; however, no guarantee or responsibility is assumed thereof, and it shall not form any part of future contracts. Properties are submitted subject to errors and omissions and all information should be carefully verified. All measurements quoted herein are approximate. Demographics are provided by SitesUSA using data from private and government sources deemed to be reliable. The information herein is provided without representation or warranty. Georeferenced data herein are provided by Placer Labs, Inc. and is provided without representation or warranty. Photos contained herein are property of their respective owners. Photos do not guarantee the current condition of the property.