

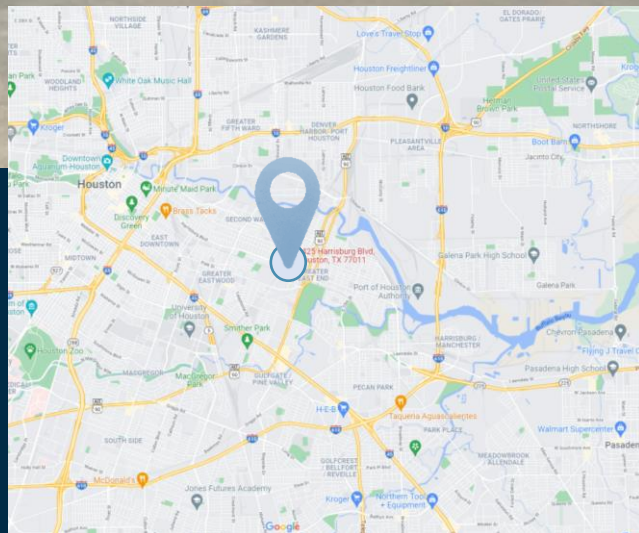
# FOR SALE

## Multi-Functional - Tiltwall Construction



**6425 Harrisburg  
Houston, TX 77011**

- Currently Occupied for Retail Use  
Adaptable to Warehouse, Storage,  
Light Manufacturing,  
Showroom or Office
- ~21,600 SF Tilt-wall Building
- ~1.50 AC Land
- Built 2000
- Located in an Opportunity Zone
- Contact Broker for Pricing & Tour



*Do Not Disturb Tenant*

*Exclusively Marketed by:*

**Steve Dome**

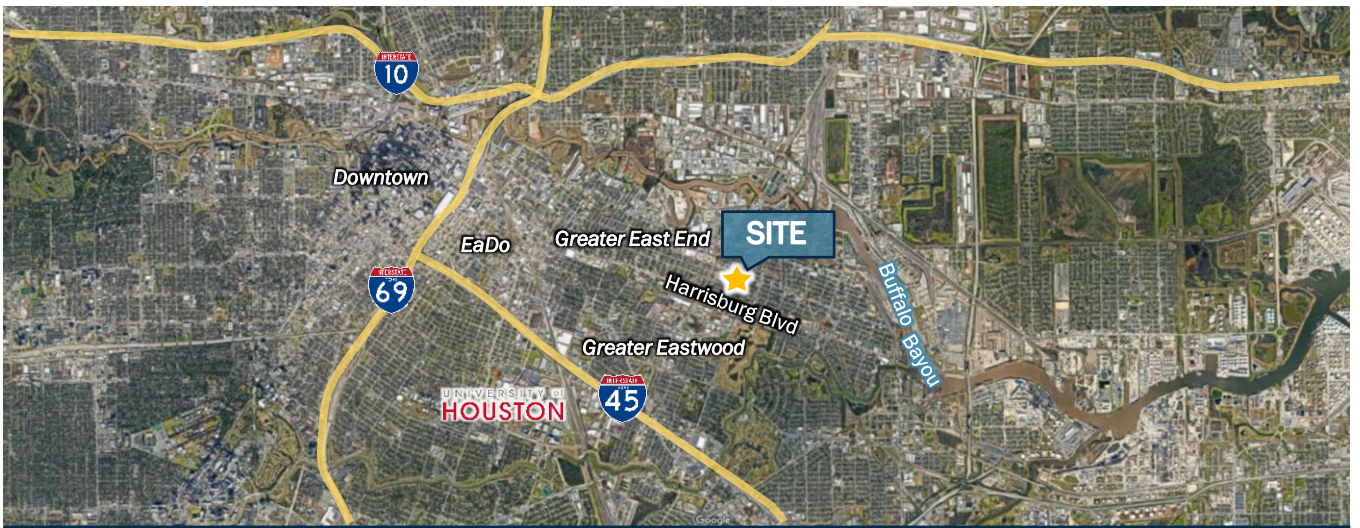
Managing Director

713.864.3232

sdome@marathon-ra.com

1700 Post Oak Blvd., Suite 600  
2 BLVD Place  
Houston, TX 77056





## FOR SALE: 6425 HARRISBURG | HOUSTON, TX 77011

- Ceiling Height 18'
- 3 Grade-level Loading Points
- Air Conditioned
- Power ~ 220, 3 Phase
- Sprinklered
- Ample Parking

### PROPERTY PHOTOS



### Exclusively Marketed by:

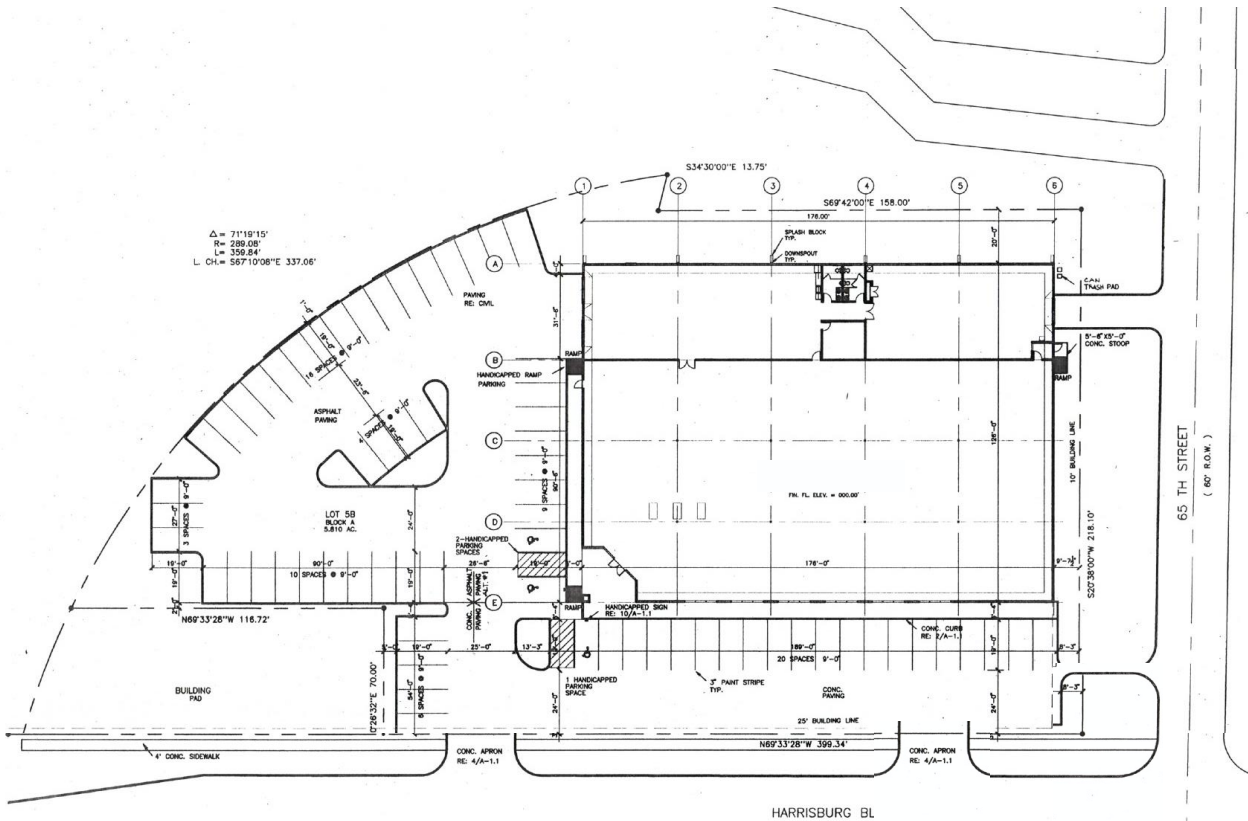
**Steve Dome**  
Managing Director  
713.864.3232  
sdome@marathon-ra.com

1700 Post Oak Blvd., Suite 600  
2 BLVD Place  
Houston, TX 77056



SITE PLAN

~Approximated



Exclusively Marketed by:

**Steve Dome**  
 Managing Director  
 713.864.3232  
 sdome@marathon-ra.com

1700 Post Oak Blvd., Suite 600  
 2 BLVD Place  
 Houston, TX 77056

