



Chase Tower

201 East Main Street
Lexington, Kentucky 40507

Property Highlights

- Located on East Main Street in Lexington's CBD
- +/-239,213 RSF, 14-story office building
- On-site 24/7 security
- Fully automated parking garage with skywalk to adjacent 404 space parking structure
- New, full-service catering & event venue on the top floor
- Fiber optic cable access

Spaces

Rate

Size

Suite 320	Negotiable	1,588 SF
Suite 360	Negotiable	1,620 SF
Suite 402	Negotiable	4,751 SF
Suite 540	Negotiable	872 SF
Suite 700	Negotiable	1,299 SF
Suite 1250	Negotiable	6,516 SF

For More Information

Paul Ray Smith, Jr

Executive Vice President

O: 859 422 4401

prsmith@naiisaac.com | KY #183529

J.L. Cannady, CCIM

Vice President

O: 859 422 4410

jlcanady@naiisaac.com | KY #218275



Commercial Real Estate Services, Worldwide.

Building Size	239,213 SF
Available SF	872 - 6,516 RSF
Building Class	A
Parking Spaces	404
Zoning	B-2, Downtown Business

NAI Isaac is pleased to present leasing opportunities at Chase Tower. Chase Tower, located in Lexington's CBD, offers a full range of opportunities for locating your office. Chase Tower office space is ideally suited for professional and business firms, high-tech companies, accounting firms, law firms, engineering firms and government agencies from the state to the local level.

Chase Tower benefits from its high visibility and convenient location within the Lexington CBD. Main and Vine Streets represent the governmental and commercial core of downtown Lexington and a large number of professional tenants. Amenities of Chase Tower include an attached 404 car garage and on-site security. Chase Tower is located one block from the Circuit and District Courthouses.

For Lease

872 - 6,516 SF | negotiable
Office Space

McBRAYER **CHASE**

Cetera INVESTORS **infineon** **J.P. Morgan** Private Bank

AMR MANAGEMENT SERVICES **Tactical-IT Group**

Turning vision into action

COMMONWEALTH OF KENTUCKY **WSP** **HISA** HORSE RACING INTEGRITY AND SAFETY AUTHORITY

Angela Evans, Fayette County Attorney **MASTER COMMISSIONER** FAYETTE CIRCUIT COURT

vaco **Morgan Akins & Jackson** **VFA**

Free Yourself ATTORNEYS AT LAW

The Mane **dupree** **Becker Law Office**

ON MAIN catering + events Lexington, KY

EMWN LAW

Charles A. Grundy, Jr., Attorney at Law
Whitley Law Office
Lisa L. Johnson, Attorney at Law
Ann D'Ambrouso, Attorney at Law

Crandall & Pera Law, LLC
Robert Stith, Attorney at Law
Bryan West, Attorney at Law
Mattmiller Crosbie, PLLC

NAI Isaac **In-Rel**
Commercial Properties PROPERTIES

NO WARRANTY OR REPRESENTATION, EXPRESS OR IMPLIED, IS MADE AS TO THE ACCURACY OF THE INFORMATION CONTAINED HEREIN, AND THE SAME IS SUBMITTED SUBJECT TO ERRORS, OMISSIONS, CHANGE OF PRICE, RENTAL OR OTHER CONDITIONS, PRIOR SALE, LEASE OR FINANCING, OR WITHDRAWAL WITHOUT NOTICE, AND OF ANY SPECIAL LISTING CONDITIONS IMPOSED BY OUR PRINCIPALS NO WARRANTIES OR REPRESENTATIONS ARE MADE AS TO THE CONDITION OF THE PROPERTY OR ANY HAZARDS CONTAINED THEREIN ARE ANY TO BE IMPLIED.

771 Corporate Drive, Suite 500
Lexington, KY 40503
859 224 2000 tel
naiisaac.com



Commercial Real Estate Services, Worldwide.

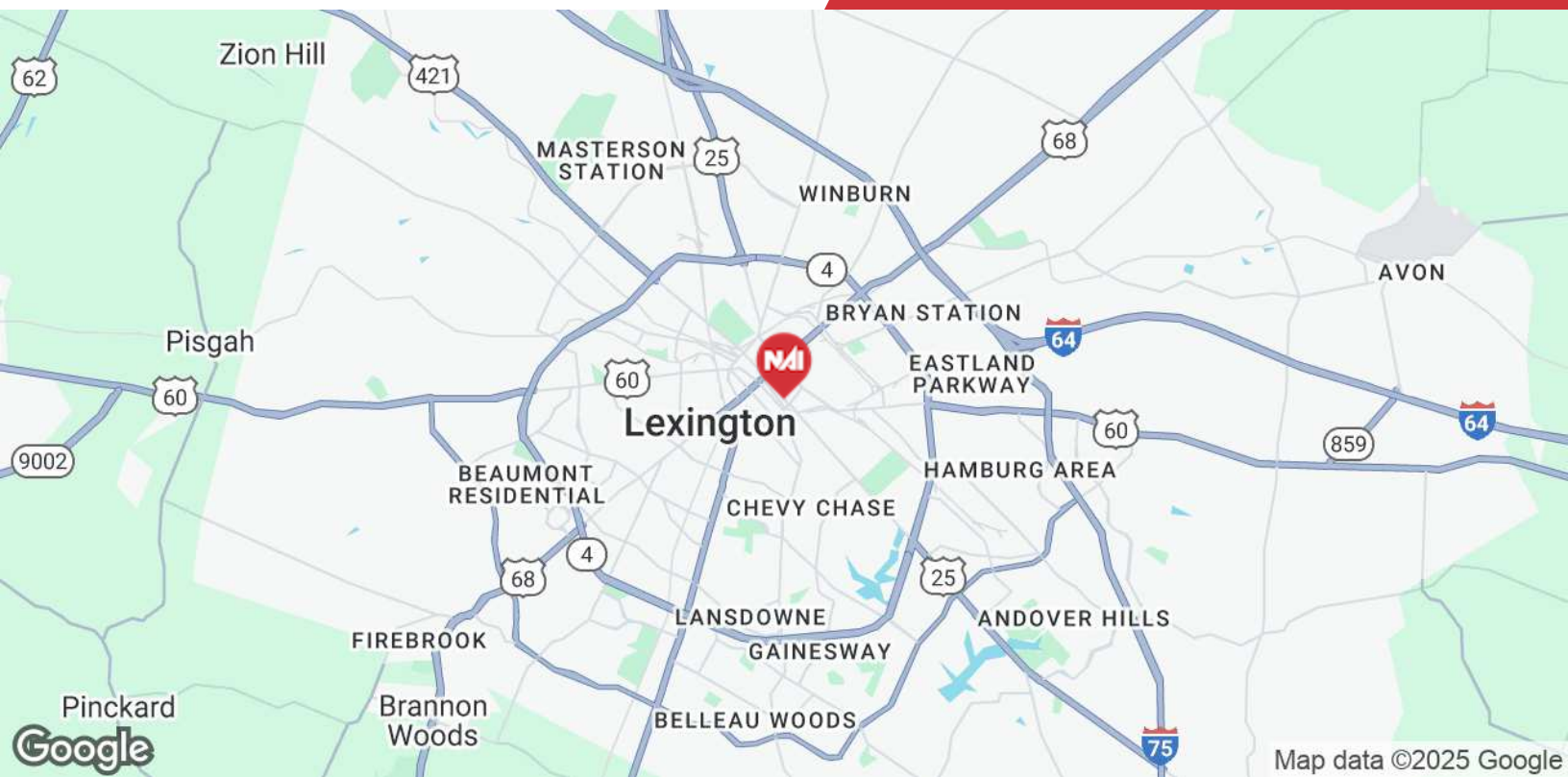
For Lease

872 - 6,516 SF | negotiable
Office Space



NO WARRANTY OR REPRESENTATION, EXPRESS OR IMPLIED, IS MADE AS TO THE ACCURACY OF THE INFORMATION CONTAINED HEREIN, AND THE SAME IS SUBMITTED SUBJECT TO ERRORS, OMISSIONS, CHANGE OF PRICE, RENTAL OR OTHER CONDITIONS, PRIOR SALE, LEASE OR FINANCING, OR WITHDRAWAL WITHOUT NOTICE, AND OF ANY SPECIAL LISTING CONDITIONS IMPOSED BY OUR PRINCIPALS NO WARRANTIES OR REPRESENTATIONS ARE MADE AS TO THE CONDITION OF THE PROPERTY OR ANY HAZARDS CONTAINED THEREIN ARE ANY TO BE IMPLIED.

771 Corporate Drive, Suite 500
Lexington, KY 40503
859 224 2000 tel
naiisaac.com

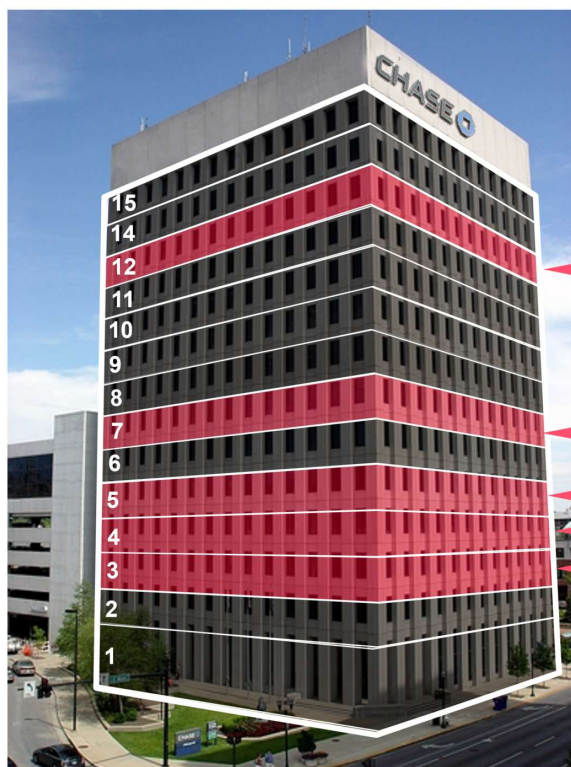


Central Business District | Lexington, KY



Map Key

- 1 LFUCG Government Center
- 2 Fayette County Clerk
- 3 Planning/Zoning Office
- 4 Fayette Circuit Courthouse
- 5 Fayette District Courthouse
- 6 US Federal Courthouse
- 7 Public Library
- 8 Convention Center
- 9 Chamber of Commerce
- 10 Visitors Bureau
- 11 Transit Center Parking



Suite 1250: 6,516 rsf

7th Floor: 1,299 rsf

5th Floor: 872 rsf

4th Floor: 4,751 rsf

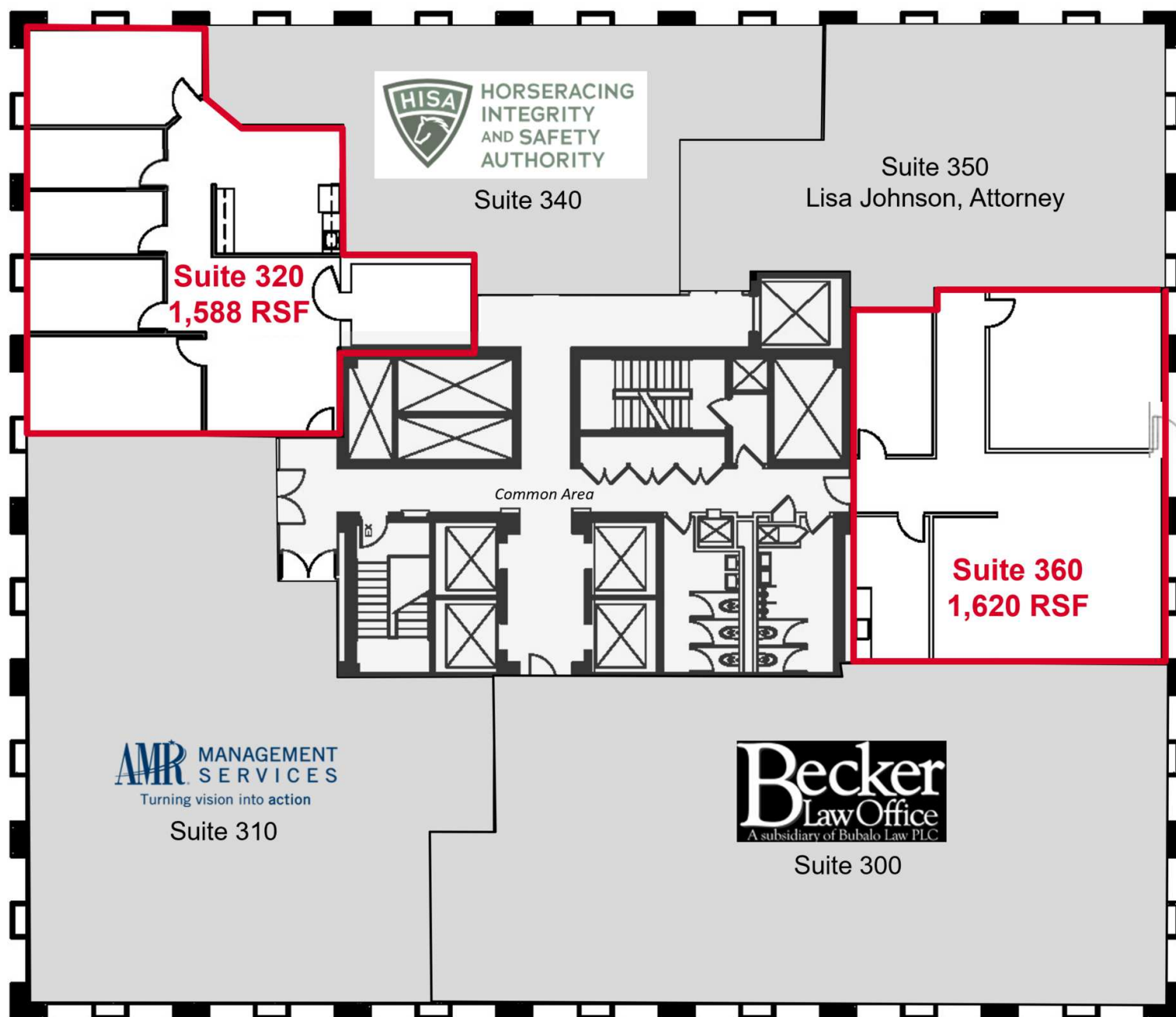
3rd Floor: 1,588 – 1,620 rsf

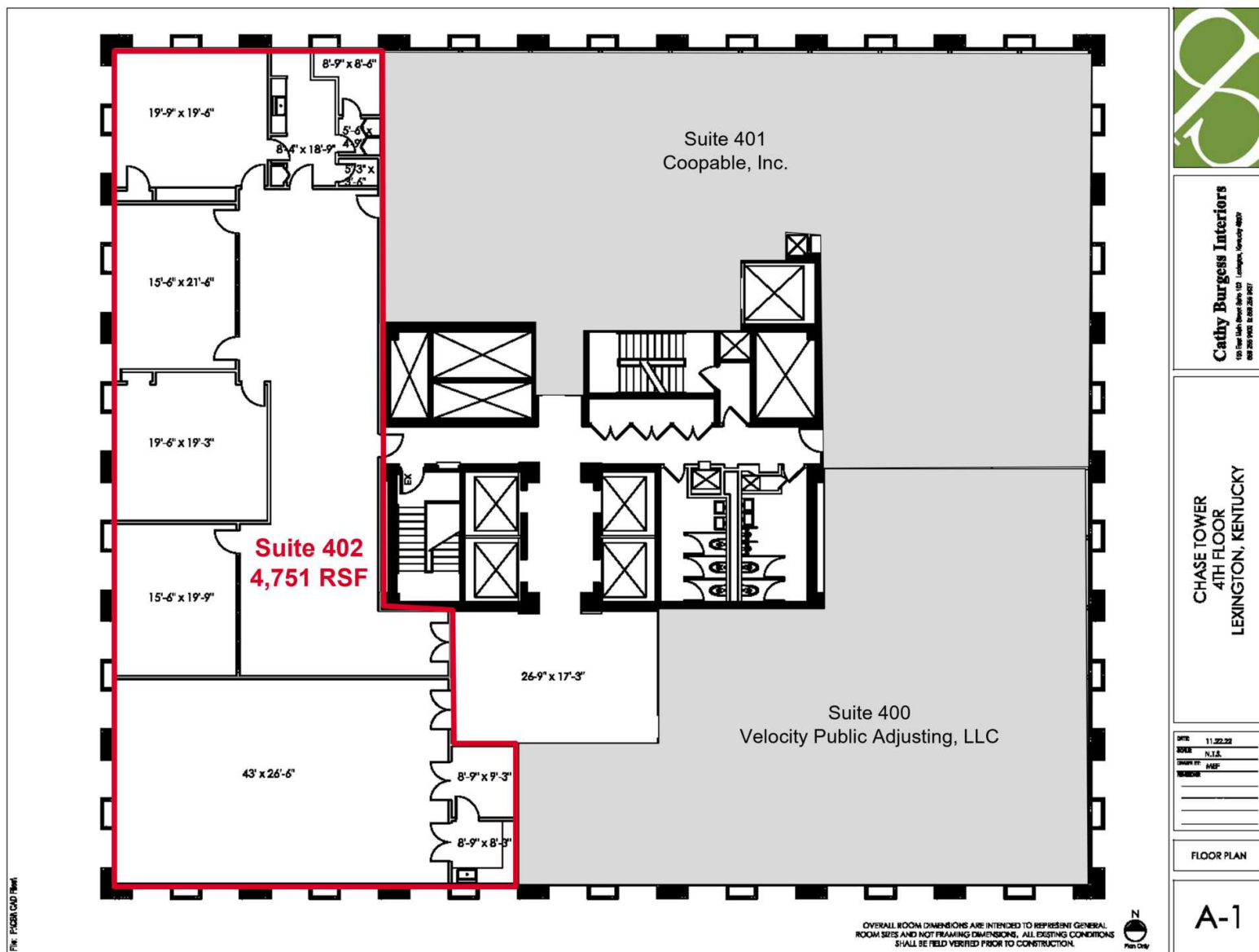
Lease Information

Lease Type:	Full Service	Lease Term:	Negotiable
Total Space:	872 - 6,516 SF	Lease Rate:	Negotiable

Available Spaces

Suite	Size (SF)	Lease Type	Lease Rate	Description
Suite 320	1,588 SF	Full Service	Negotiable	-
Suite 360	1,620 SF	Full Service	Negotiable	-
Suite 402	4,751 SF	Full Service	Negotiable	-
Suite 540	872 SF	Full Service	Negotiable	-
Suite 700	1,299 SF	Full Service	Negotiable	-
Suite 1250	6,516 SF	Full Service	Negotiable	-

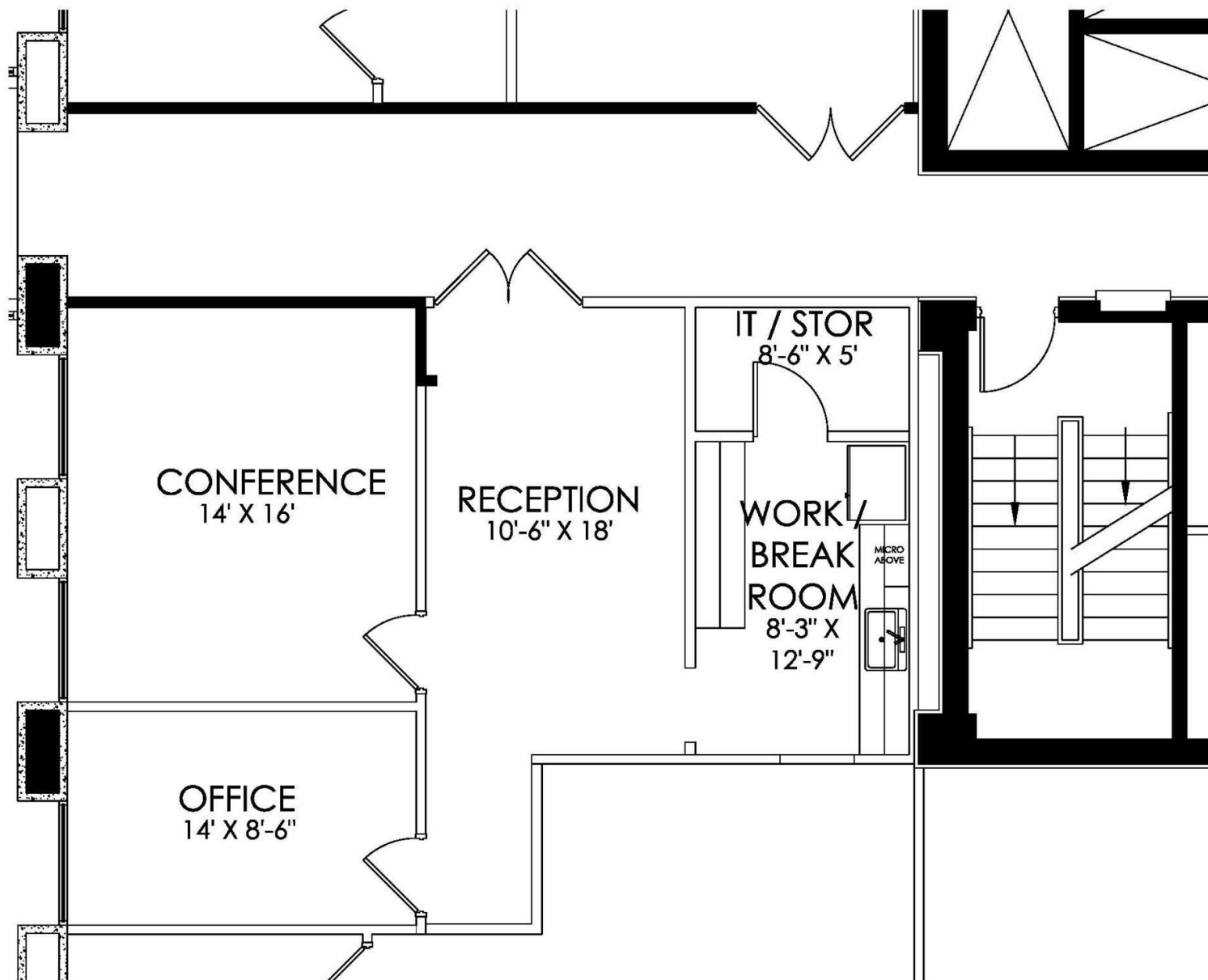


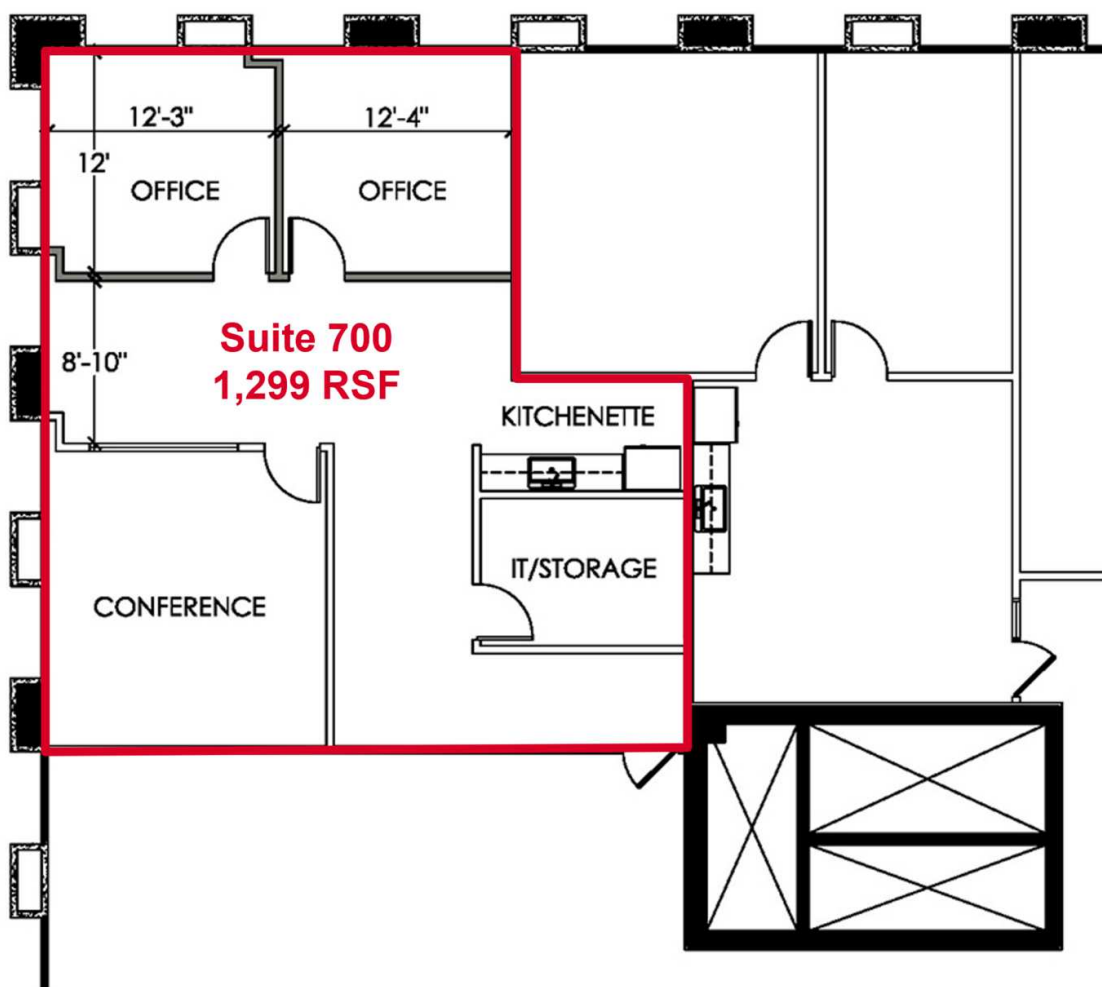


For Lease

872 - 6,516 SF | negotiable

Suite 540 - 872 RSF





File: FLOOR 000 Plan

OVERALL ROOM DIMENSIONS ARE INTENDED TO REPRESENT GENERAL ROOM SIZES AND NOT FINISHING DIMENSIONS. ALL EXISTING CONDITIONS SHALL BE FIELD VERIFIED PRIOR TO CONSTRUCTION.



Cathy Burgess Interiors

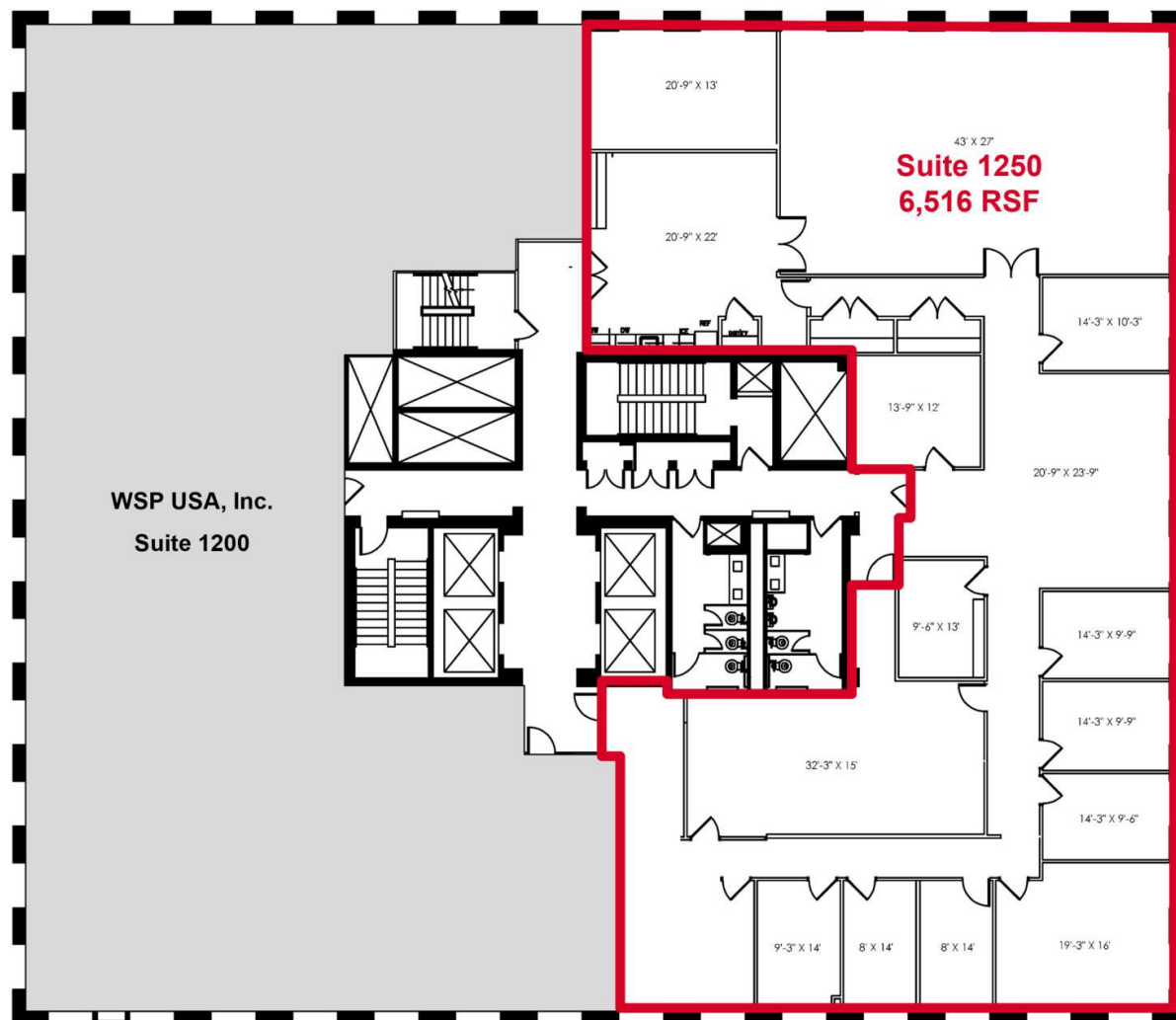
100 New York Street, Suite 100, Lexington, Kentucky 40502
859.224.2000 | 8.00.20.2027

**SUITE 700
SEVENTH FLOOR
CHASE TOWER
LEXINGTON, KENTUCKY**

DATE	01/26/20
BOOK	105
DRAWN BY	ML
REVISION	

PROPOSED AREA

A-1



WSP USA, Inc.
Suite 1200

Suite 1250
6,516 RSF



Cathy Burgess Interiors
199 East Main Street Suite 102 Lexington, Kentucky 40507
859.225.5400 x.859.225.5407

CHASE TOWER
12TH FLOOR
LEXINGTON, KENTUCKY

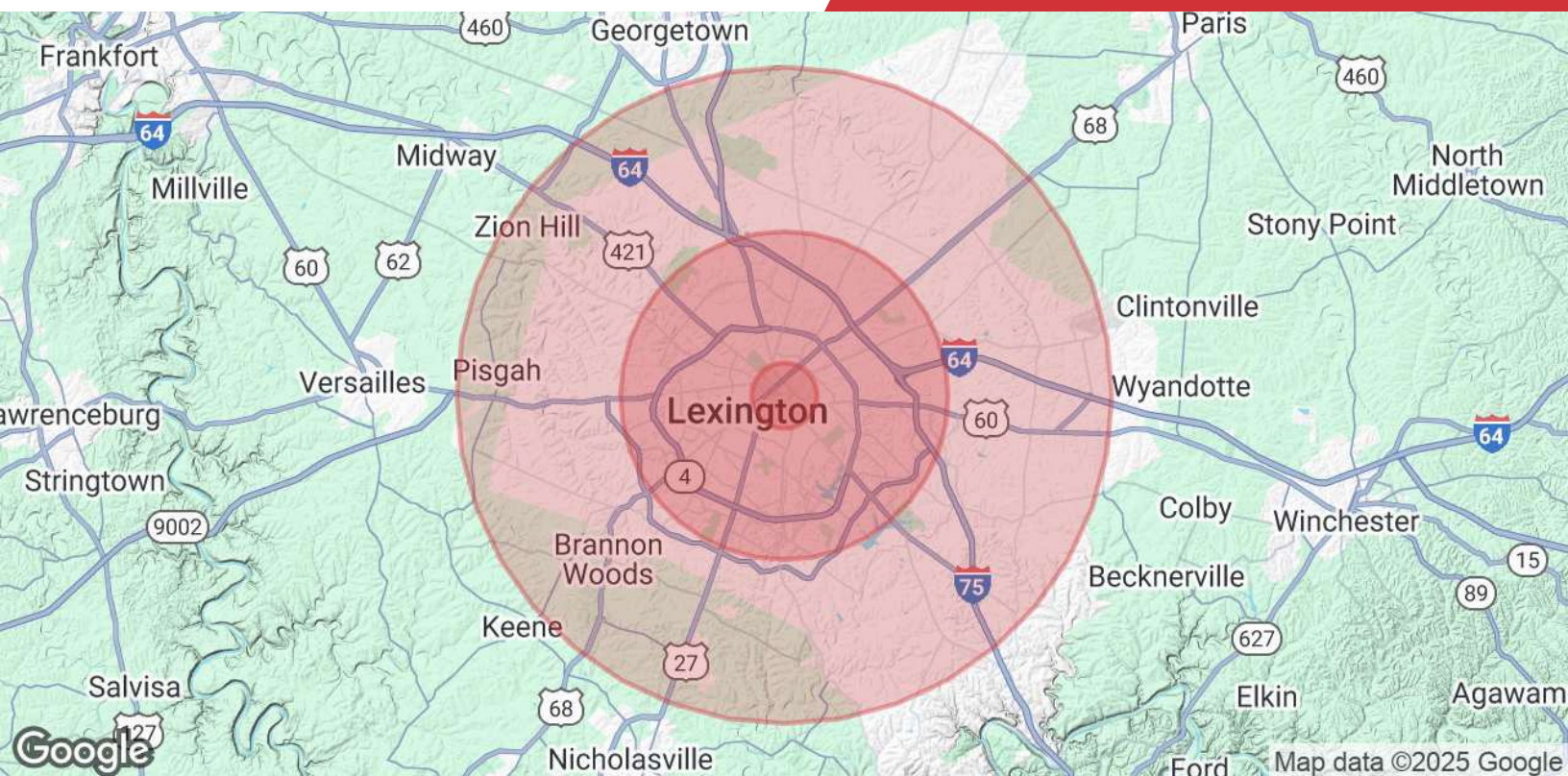
DATE	08.14.25
SCALE	N.T.S.
DRAWN BY	M/EP
REVISION	08.20.25
	10.21.25

FLOOR PLAN

A-1

OVERALL ROOM DIMENSIONS ARE INTENDED TO REPRESENT GENERAL ROOM SIZES AND NOT FINISH DIMENSIONS. ALL EXISTING CONDITIONS SHALL BE FIELD VERIFIED PRIOR TO CONSTRUCTION.





Population	1 Mile	5 Miles	10 Miles
Total Population	19,967	238,973	368,906
Average Age	29.8	34.4	35.0
Average Age (Male)	29.2	33.3	34.0
Average Age (Female)	31.1	35.7	36.1
Households & Income	1 Mile	5 Miles	10 Miles
Total Households	9,110	104,526	154,956
# of Persons per HH	2.2	2.3	2.4
Average HH Income	\$40,363	\$54,545	\$65,914
Average House Value	\$244,816	\$210,572	\$228,270

* Demographic data derived from 2021 STDB