

# RETAIL SPACE FOR LEASE

PARK + GARDEN • 1470 GARDEN ST. • HOBOKEN, NJ

## DETAILS

**SIZE:** 1,589 SF

**FRONTAGE:** 75 FT

**ASKING RENT:** UPON REQUEST

**LEASE TYPE:** MODIFIED GROSS

**POSSESSION:** IMMEDIATE



## PROPERTY HIGHLIGHTS

Prime **corner** location in uptown **Hoboken**

Anchored by 2 connecting **12-story** luxury towers with **212 high-end** rental units

Easy access to **PATH** and **NYC Ferry**

Excellent demographics with **growing** population (**16% increase** since 2010)

Great visibility with **75 feet** of frontage and high ceilings



**TOM DONOVAN**

Principal

M: 917.796.7381

[tdonovan@donovanrealtygroup.com](mailto:tdonovan@donovanrealtygroup.com)

201 Montgomery St #263

Jersey City, NJ 07302

201.451.5054

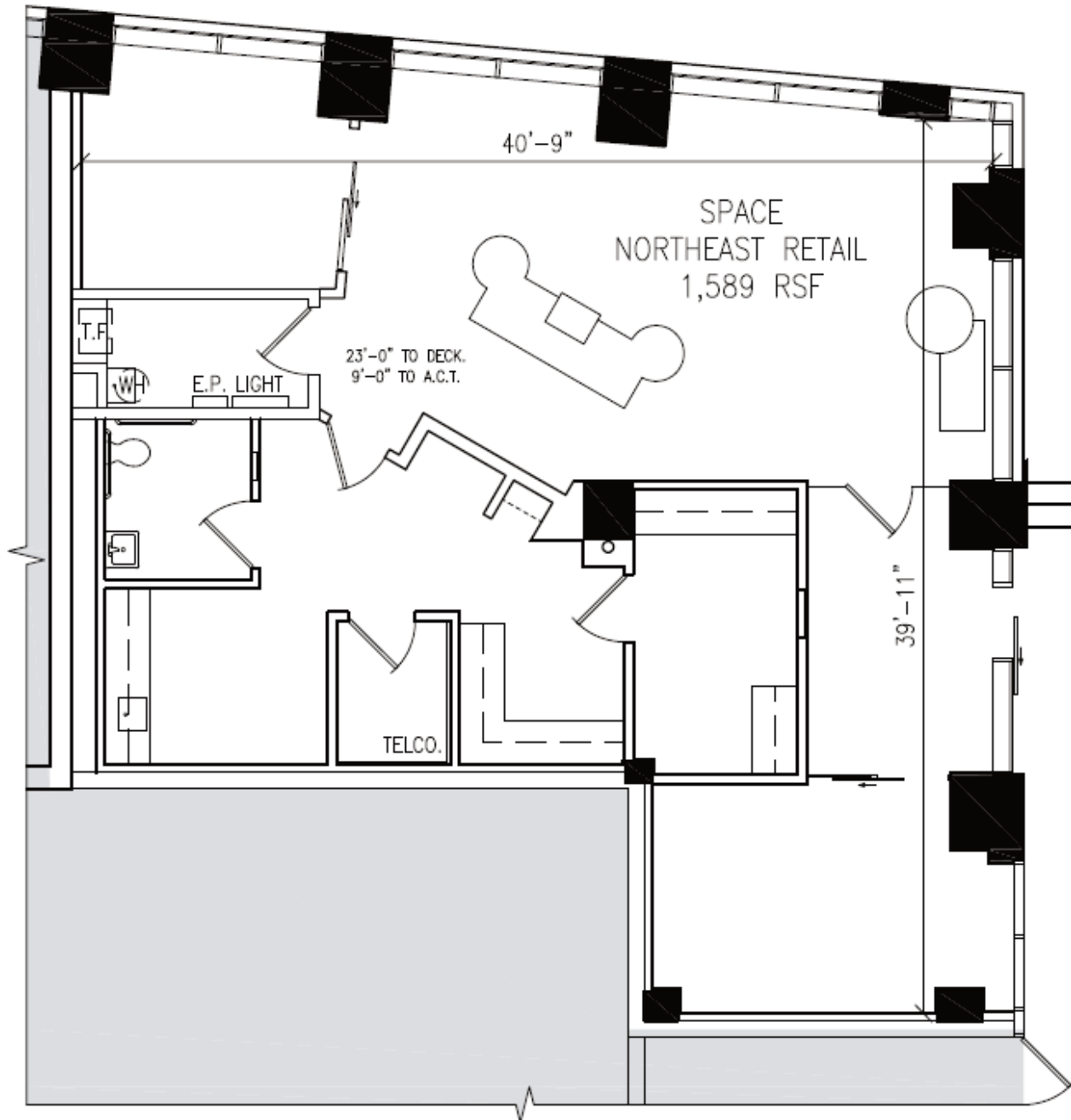
[donovanrealtygroup.com](http://donovanrealtygroup.com)

This information has been secured from sources we believe to be reliable, but we make no representations as to the accuracy of the information. References to square footage are approximate. Tenant must verify the information and bears all risk for any inaccuracies.

# RETAIL SPACE FOR LEASE

PARK + GARDEN • 1470 GARDEN ST. • HOBOKEN, NJ

15th Street



Garden Street



**TOM DONOVAN**

Principal

M: 917.796.7381

tdonovan@donovanrealtygroup.com

201 Montgomery St #263

Jersey City, NJ 07302

201.451.5054

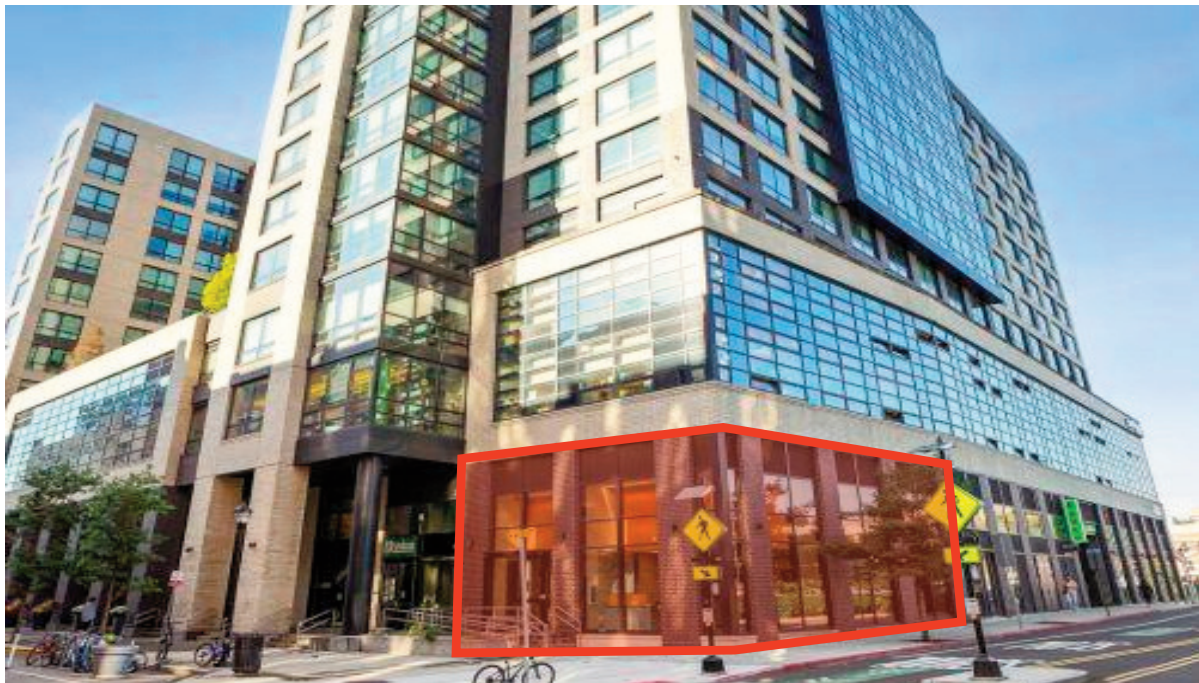
donovanrealtygroup.com

This information has been secured from sources we believe to be reliable, but we make no representations as to the accuracy of the information. References to square footage are approximate. Tenant must verify the information and bears all risk for any inaccuracies.



# RETAIL SPACE FOR LEASE

PARK + GARDEN • 1470 GARDEN ST. • HOBOKEN, NJ



**DONOVAN**  
REALTY & DEVELOPMENT, INC.

**TOM DONOVAN**

Principal

M: 917.796.7381

[tdonovan@donovanrealtygroup.com](mailto:tdonovan@donovanrealtygroup.com)

**201 Montgomery St #263**

**Jersey City, NJ 07302**

**201.451.5054**

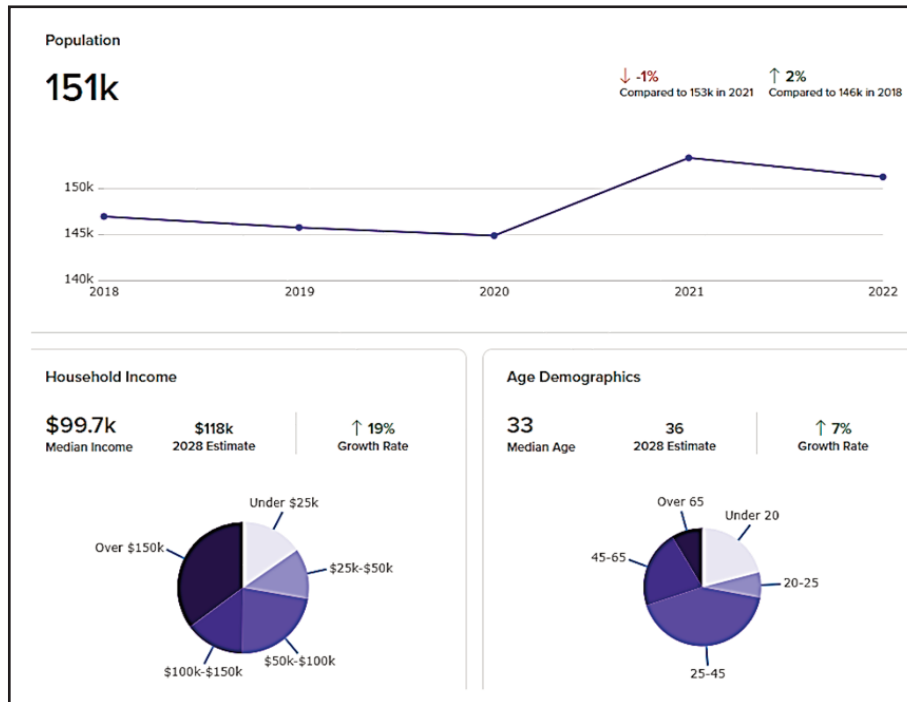
**[donovanrealtygroup.com](http://donovanrealtygroup.com)**

This information has been secured from sources we believe to be reliable, but we make no representations as to the accuracy of the information. References to square footage are approximate. Tenant must verify the information and bears all risk for any inaccuracies.

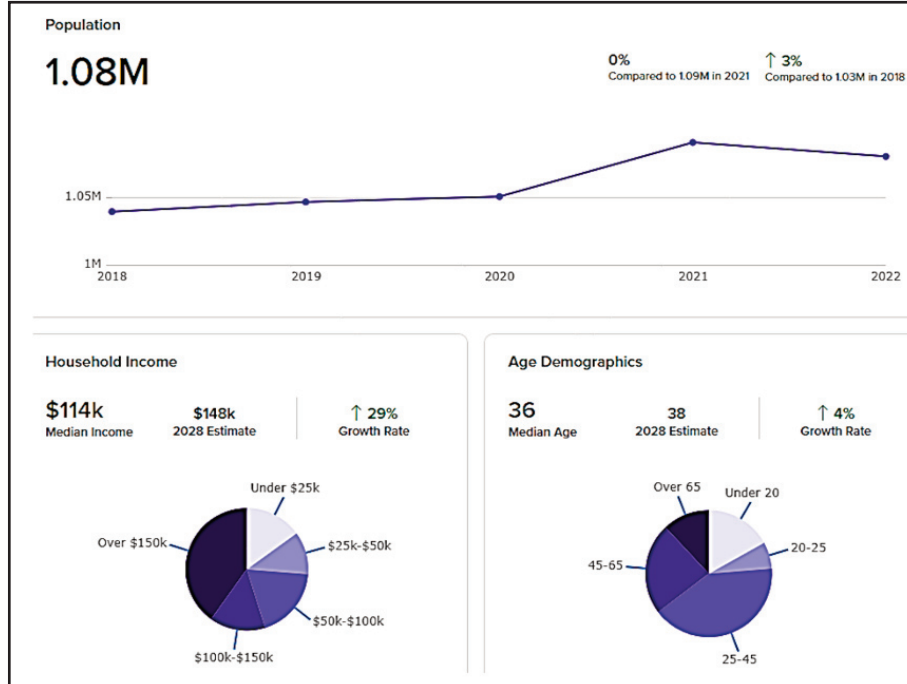
# RETAIL SPACE FOR LEASE

PARK + GARDEN • 1470 GARDEN ST. • HOBOKEN, NJ

## 1-mile Radius



## 3-mile Radius



**TOM DONOVAN**

Principal

M: 917.796.7381

tdonovan@donovanrealtygroup.com

**201 Montgomery St #263**

**Jersey City, NJ 07302**

**201.451.5054**

**donovanrealtygroup.com**

This information has been secured from sources we believe to be reliable, but we make no representations as to the accuracy of the information. References to square footage are approximate. Tenant must verify the information and bears all risk for any inaccuracies.