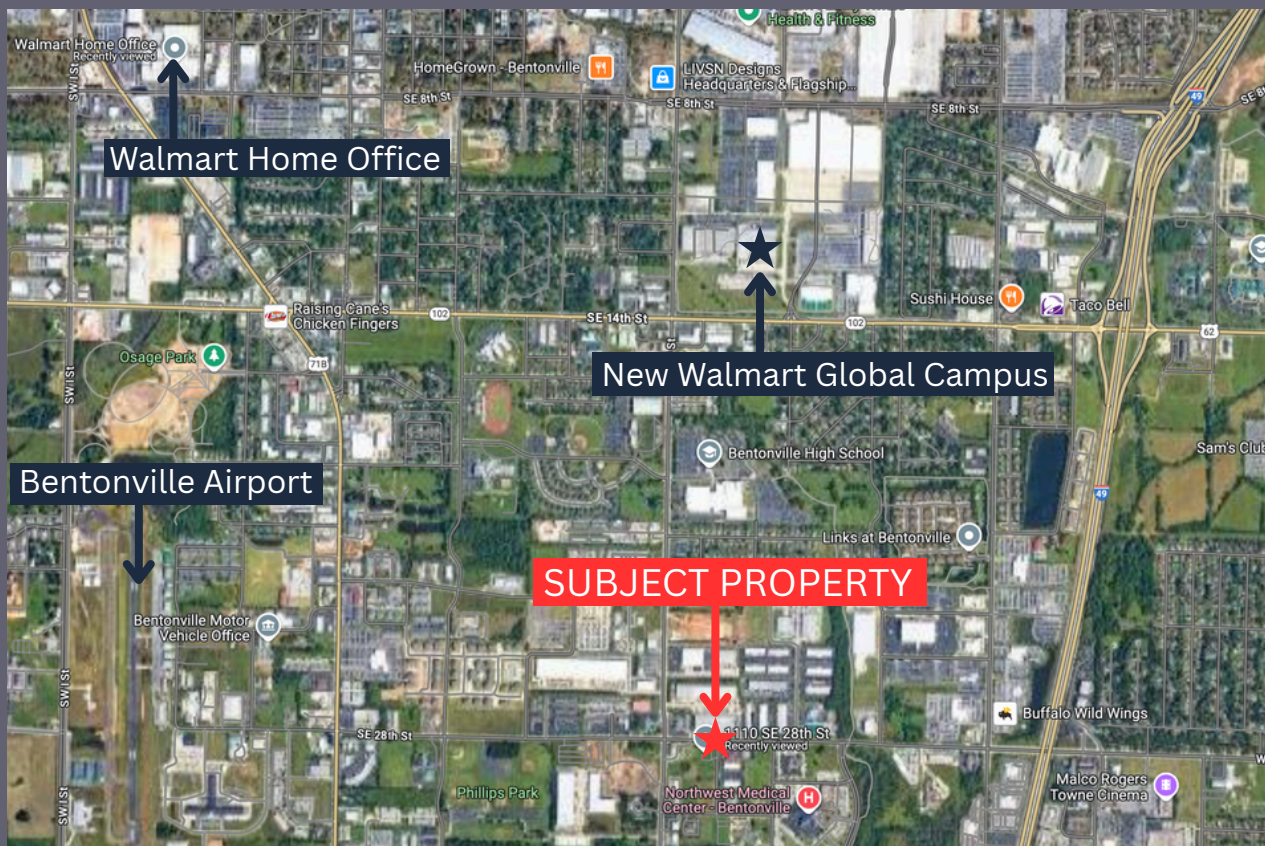




**1110 SE 28th St.
Bentonville, AR
FOR LEASE
MLS #1304306**

**4,298 SF
\$24/SF NNN**



ABOUT THE PROPERTY

Move-in Ready Class A Office Space | Prime Location Near Walmart Global Campus. Located just minutes from the new Walmart Global Home Office campus, this fully furnished Class A office space offers an ideal setup for immediate occupancy. The suite features multiple executive offices, a spacious conference room, a break room with kitchenette, and four restrooms. Surrounded by parks, restaurants, and nearby access to local trails, this location offers both convenience and quality of life for your team.



Jeff Pederson
(479) 856-2233
jpederson@lindsey.com

PROPERTY FEATURES

- Conference room
- Bull pen
- Dedicated IT room
- Two sets of restrooms
- Breakroom with kitchenette
- 14 individual offices
- Reception & waiting area



Jeff Pederson
(479) 856-2233
jpederson@lindsey.com