

FOR SALE OR LEASE

GHENT OFFICE/RETAIL BUILDING

400 W. Olney Road, Norfolk, VA



- End Cap: 2,500 SF
- Built in 1979
- Total Square Feet Lower Floor: 5,383
- Total Square Feet Upper Floor: 4,050
- Total Building Area: 9,433
- Land Area: 16,695 SF
- 7 Rental units
- 15 Parking spaces
- Close to CBD, Colley Avenue and Sentara Norfolk General Hospital



Demographics (2018)

	1 Mile	3 Miles	5 Miles
Population	16,561	112,867	257,835
Households	8,963	42,658	98,230
Ave. HH Inc.	\$97,385	\$66,230	\$62,448

CONTACT:

LINDSAY BILISOLY

(757) 640-8234

lindsaybilisoly@harveylindsay.com

HARVEY LINDSAY

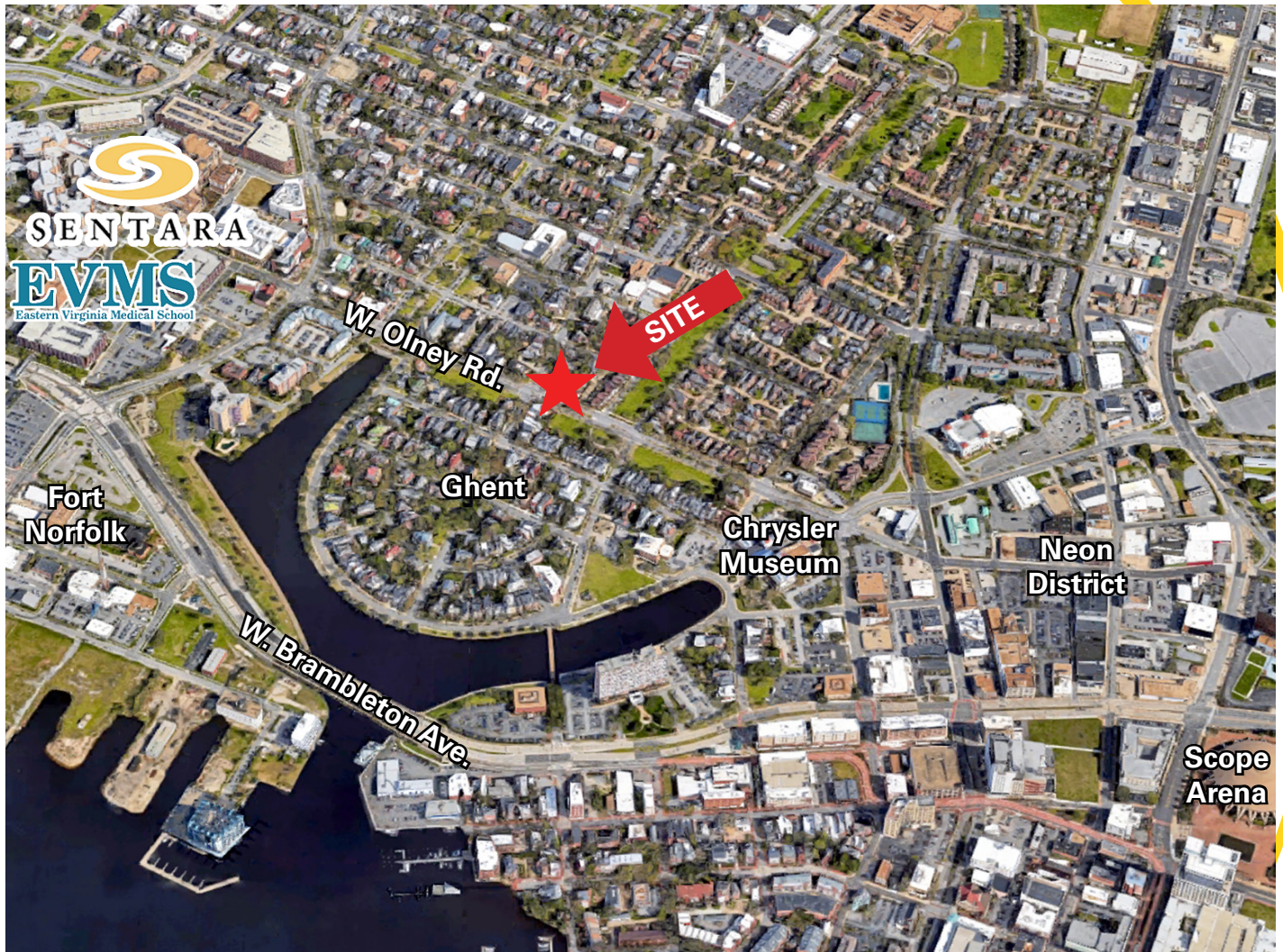
COMMERCIAL REAL ESTATE

A Tradition of Forward Thinking

FOR SALE OR LEASE

GHENT OFFICE/RETAIL BUILDING

400 W. Olney Road, Norfolk, VA



- Near the heart of Ghent
- Located on the corner of W. Olney Road and Colonial Avenue
- Surrounded by apartments, shops and close to CBD of Norfolk

CONTACT:

LINDSAY BILISOLY

(757) 640-8234

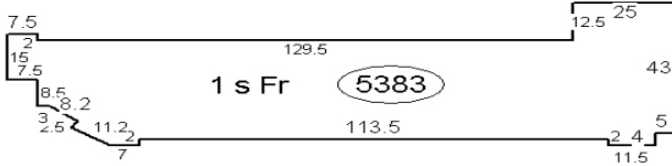
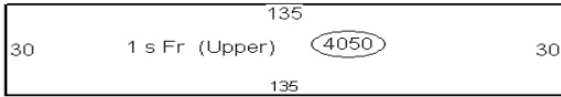
lindsaybilisoly@harveylindsay.com

HARVEY LINDSAY

COMMERCIAL REAL ESTATE

A Tradition of Forward Thinking

FOR SALE OR LEASE - GHENT OFFICE/RETAIL BUILDING - 400 W. Olney Road, Norfolk, VA



CONTACT:

LINDSAY BILISOLY

(757) 640-8234

lindsaybilisoly@harveylindsay.com

HARVEY LINDSAY

COMMERCIAL REAL ESTATE

A Tradition of Forward Thinking

The information contained herein has been obtained from sources believed to be reliable but is not warranted.
We cannot be responsible for errors, omissions, withdrawal, or prior lease.