

# FOR LEASE

3844 Leeds Ave | North Charleston, SC



**COLDWELL BANKER  
COMMERCIAL**  
ATLANTIC



## OFFERING SUMMARY



### LEASE RATE

\$1,750/Month  
Modified Gross



### AVAILABLE SF

1,244 SF



### ZONING

B-2 - General Business District  
City of North Charleston

## PROPERTY OVERVIEW

- Formally a law office, this location is situated beside Charleston County's Government Building and the Charleston DMV.
- Excellent visibility from Leeds Avenue.
- Immediate I-526 access and within 2 miles of I-26.
- A 10-minute drive to the King St. exit in Downtown Charleston.

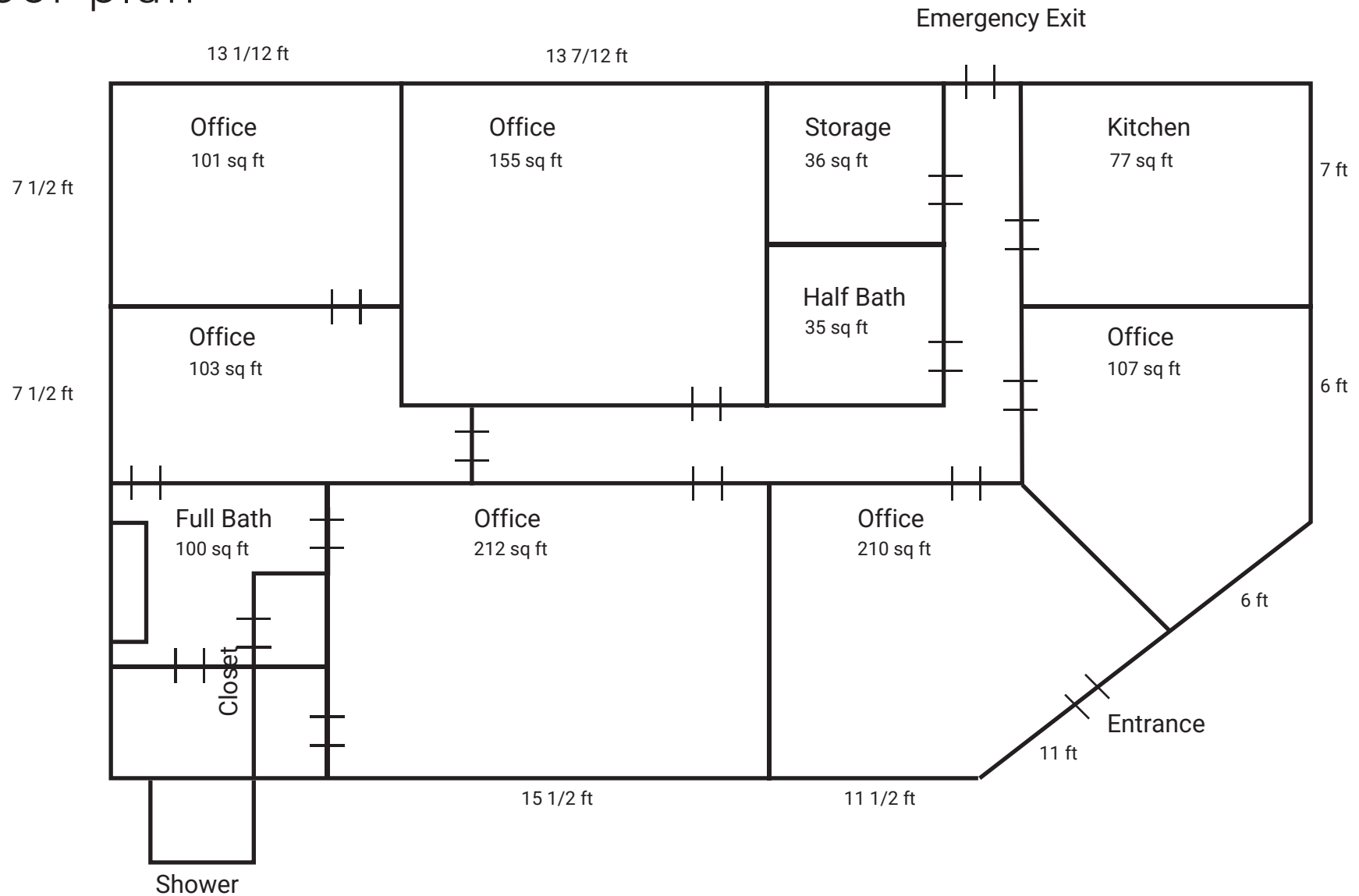


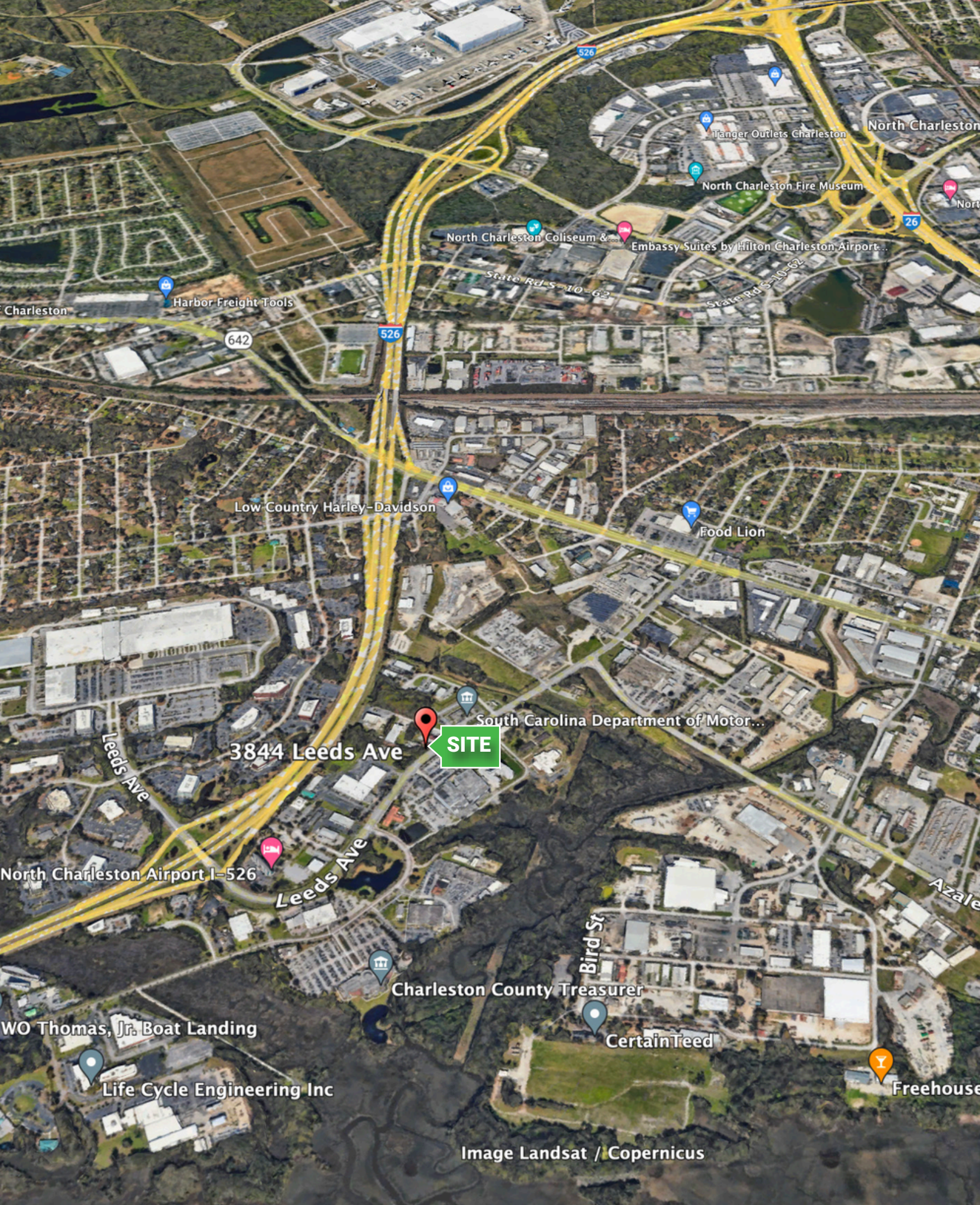
**COLDWELL BANKER  
COMMERCIAL**  
ATLANTIC

3844 Leeds Ave | North Charleston, SC

Trey Davis • [tdavis@cbcatlantic.com](mailto:tdavis@cbcatlantic.com)

# 3844 Leeds Ave floor plan





3844 Leeds Ave

SITE



Trey Davis  
(C) 803.468.7766  
tdavis@cbsatlantic.com

3506 W Montague Ave Suite 200  
North Charleston, SC 29418  
843.744.9877  
cbsatlantic.com | cbcretailatlantic.com



**COLDWELL BANKER**  
**COMMERCIAL**  
**ATLANTIC**

This information has been obtained from sources believed reliable but has not been verified for accuracy or completeness. Coldwell Banker Commercial Atlantic makes no guarantee, representation or warranty and accepts no responsibility or liability as to the accuracy, completeness, or reliability of the information contained herein. You should conduct a careful, independent investigation of the property and verify all information. Any reliance on this information is solely at your own risk.

The information contained herein should be considered confidential and remains the sole property of Coldwell Banker Commercial Atlantic at all times. Although every effort has been made to ensure accuracy, no liability will be accepted for any errors or omissions. Disclosure of any information contained herein is prohibited except with the express written permission of Coldwell Banker Commercial Atlantic.