



1142 North Gilbert Street

Anaheim, California 92801

Lease Highlights

- Sublease - Exp 10-31-2026
- Longer Direct Deal Possible
- Partially climate-controlled warehouse
- Kitchen
- Excellent 91 & 5 freeway access
- Northwestern Anaheim location
- Year Built 1972
- CAM fee \$914 per month

Property Description

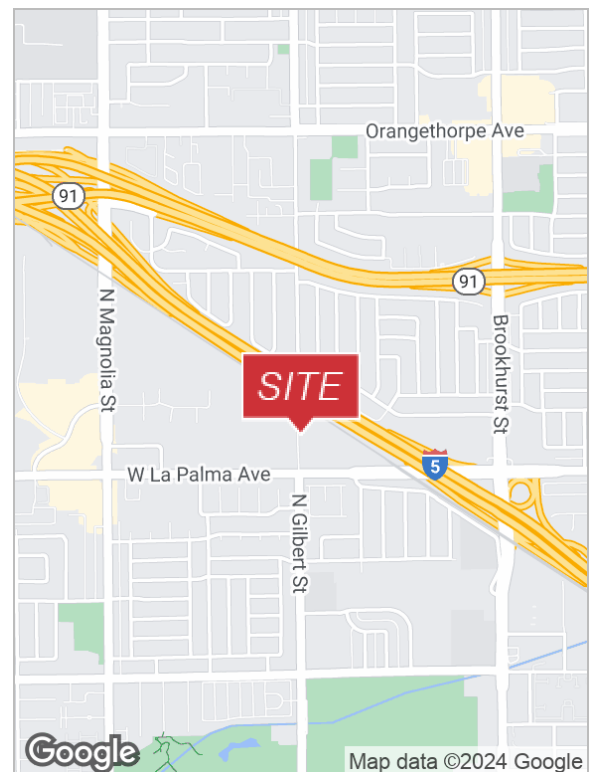
4,262 SF available for sub-lease. Term expires October 31, 2026. Longer direct deal possible. 1,708 SF climate controlled warehouse. Additional 1,000 SF of warehouse with 2 loading doors. Kitchen and 2 first level offices, equaling 1,080 SF. 474 SF mezzanine office. 2 ADA restrooms Trophy condition.

Location Description

NW Anaheim with excellent 5 & 91 freeway access. Near many amenities.

Available Spaces

Spaces	Lease Rate	Size (SF)
1142 N Gilbert St.	\$1.45 SF/MG/month	4,262



For more information

Marie Taylor

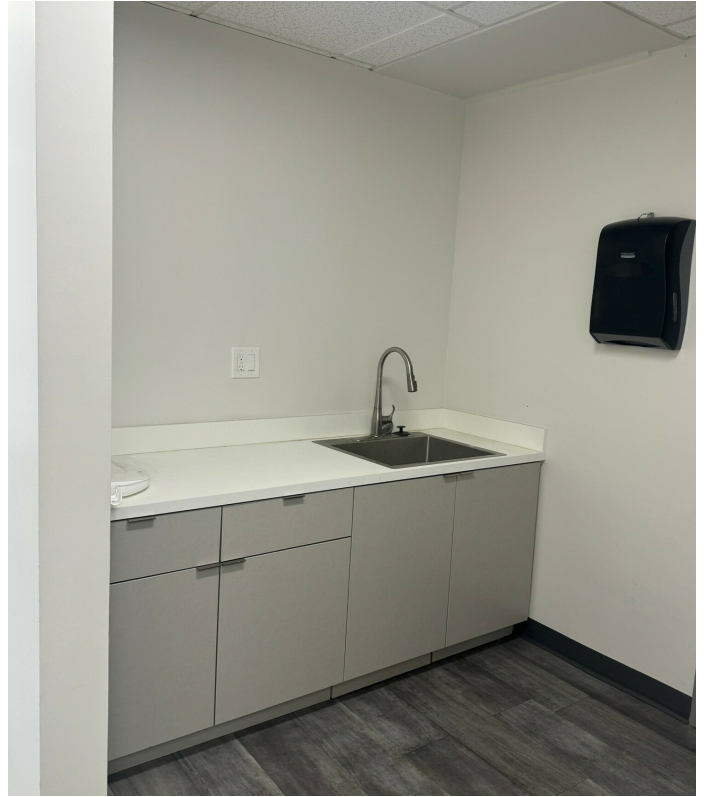
O: 626.204.1520

mtaylor@naicapital.com | CalDRE #01233430

No warranty, express or implied, is made as to the accuracy of the information contained herein. This information is submitted subject to errors, omissions, change of price, rental or other conditions, withdrawal without notice, and is subject to any special listing conditions imposed by our principals. Cooperating brokers, buyers, tenants and other parties who receive this document should not rely on it, but should use it as a starting point of analysis, and should independently confirm the accuracy of the information contained herein through a due diligence review of the books, records, files and documents that constitute reliable sources of the information described herein. Logos are for identification purposes only and may be trademarks of their respective companies. NAI Capital Commercial, Inc. CAL DRE Lic. #02130474

For Sublease

1142 North Gilbert Street



Marie Taylor
626.204.1520
mtaylor@naicapital.com
CalDRE #01233430

For Sublease

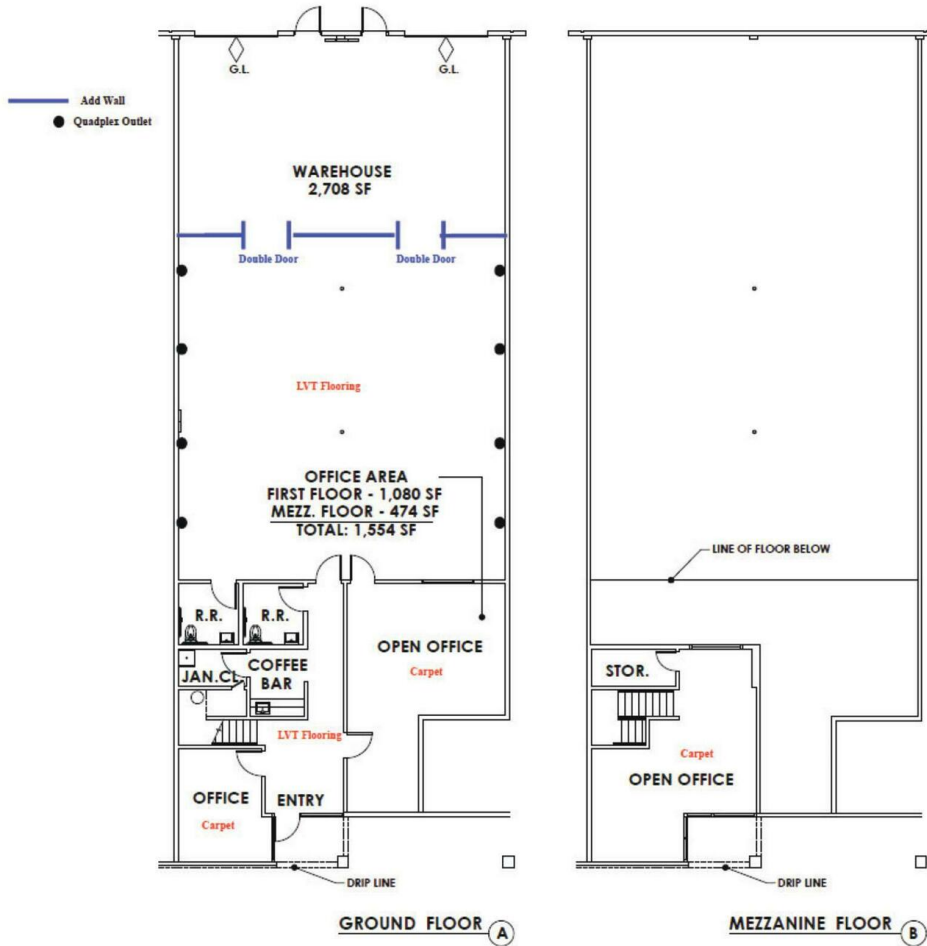
1142 North Gilbert Street



Marie Taylor
626.204.1520
mtaylor@naicapital.com
CalDRE #01233430

For Sublease

1142 North Gilbert Street



Marie Taylor
626.204.1520
mtaylor@naicapital.com
CalDRE #01233430