

RETAIL / OFFICE / SHOWROOM



SOUTH SHORE PLAZA
4705-4813 Liberty Ave., Vermilion, OH

RATE REDUCED!
\$7psf NNN for 1st year!

Property Features

- Four suites available
- High traffic area off SR-6
- Variety of suites ranging from 2,000 - 7,600 SF
- Zoned retail/office/showroom
- Signage available
- Signalized intersection

4 SUITES AVAILABLE		
SUITE #	SIZE	
4713	LEASED	
4741 - DIVISIBLE		
4741	6,690 SF	80' x 61'-8"
4769	3,000 SF	30' x 100'
4803-4805 & 4807 - CONTIGUOUS 7,600 SF		
4803-4805	5,600 SF	50' x 100'
4807	2,000 SF	25' x 80'

Hiedi Winston
+1 440 752 2617
hwinston@naipvc.com



SUITE TENANT

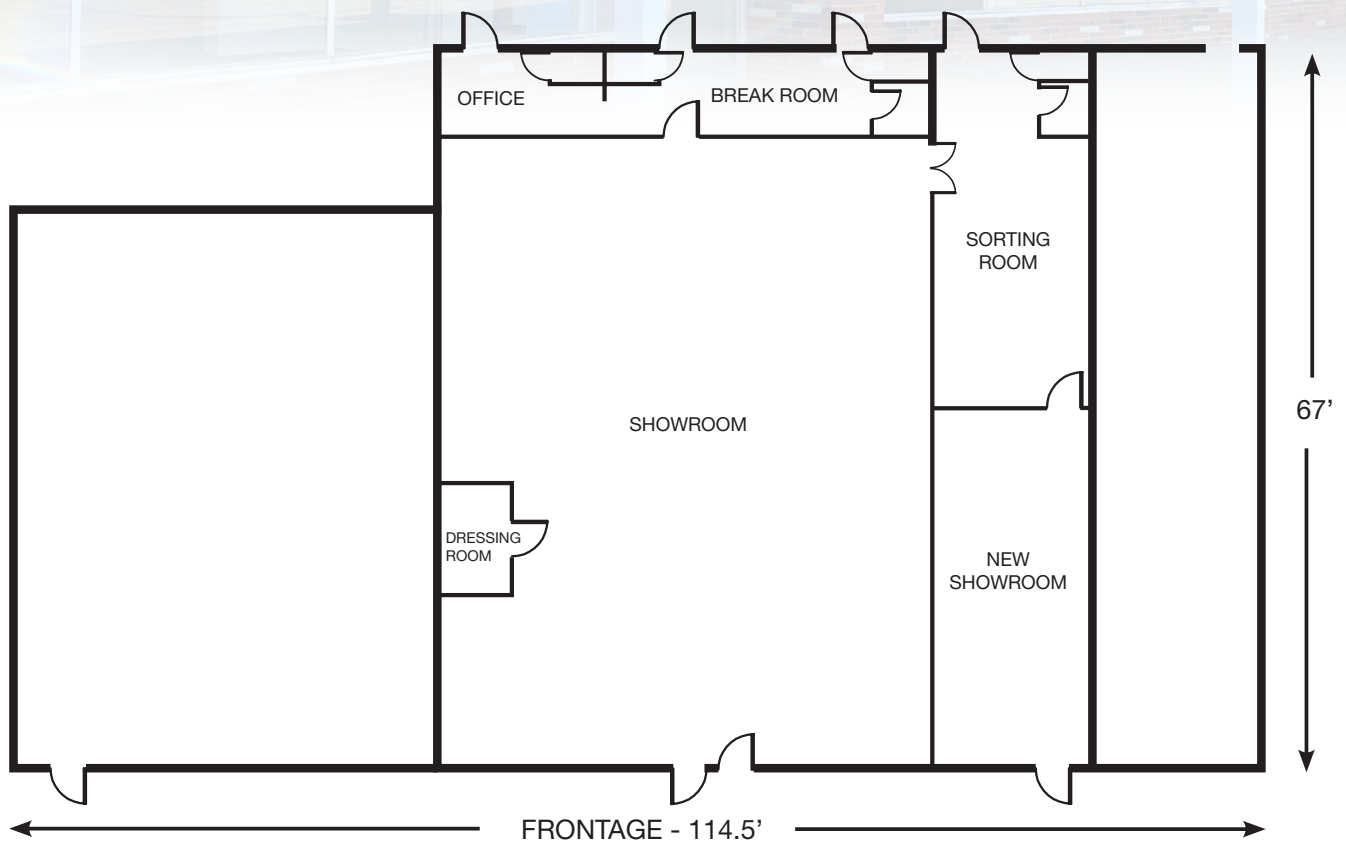
4705	Dollar General
4709	Flame Tobacco & Vape
4712	Doc's Open Box
4721	Anytime Fitness
4723	Dollar Tree
4722	Health Solution Centers
4741	VACANT
4761	Harbourtown Marine
4765	Harbourtown Marine
4767	Hometown Bakery
4769	VACANT
4771	Game Stop
4788	True Value Hardward
4789	Susie's Homestyle Cafe
4793	Lucky Chinese
4799	Sugar Crush Candy
4801	Ruff & Fluff
4803-4805	VACANT
4807	VACANT
4809	Salty Critter
4811	Harborview Storage
STAND ALONE	
4783	McDonalds
4812	Conrads

4741 Liberty Ave. 6,690 SF



Hiedi Winston
+1 440 752 2617
hwinston@naipvc.com

4741 Liberty Ave. 6,690 SF



Hiedi Winston
+1 440 752 2617
hwinston@naipvc.com

4769 Liberty Ave. 3,000 SF

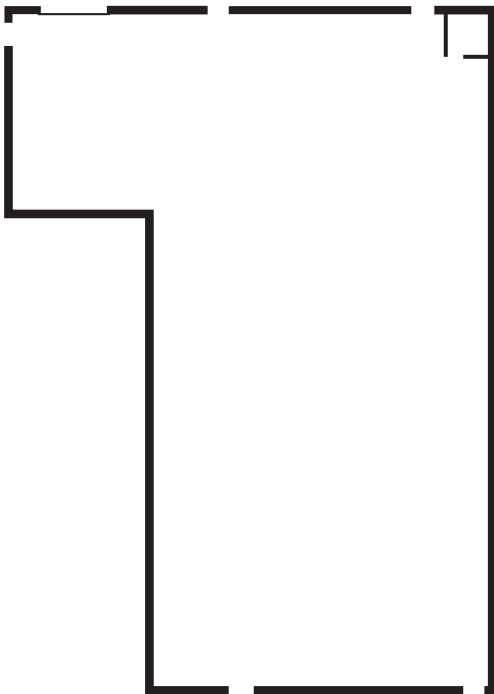


Hiedi Winston
+1 440 752 2617
hwinston@naipvc.com

4803-4805 Liberty Ave. 5,600 SF

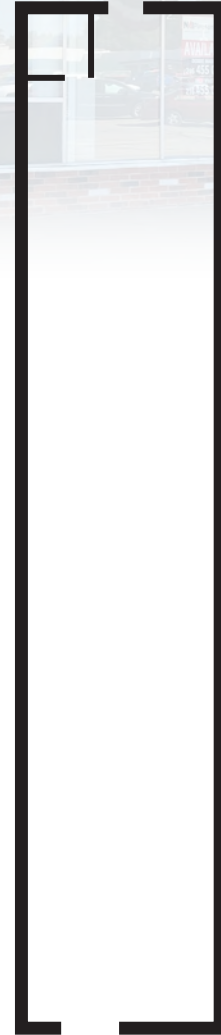


Includes Loading Dock



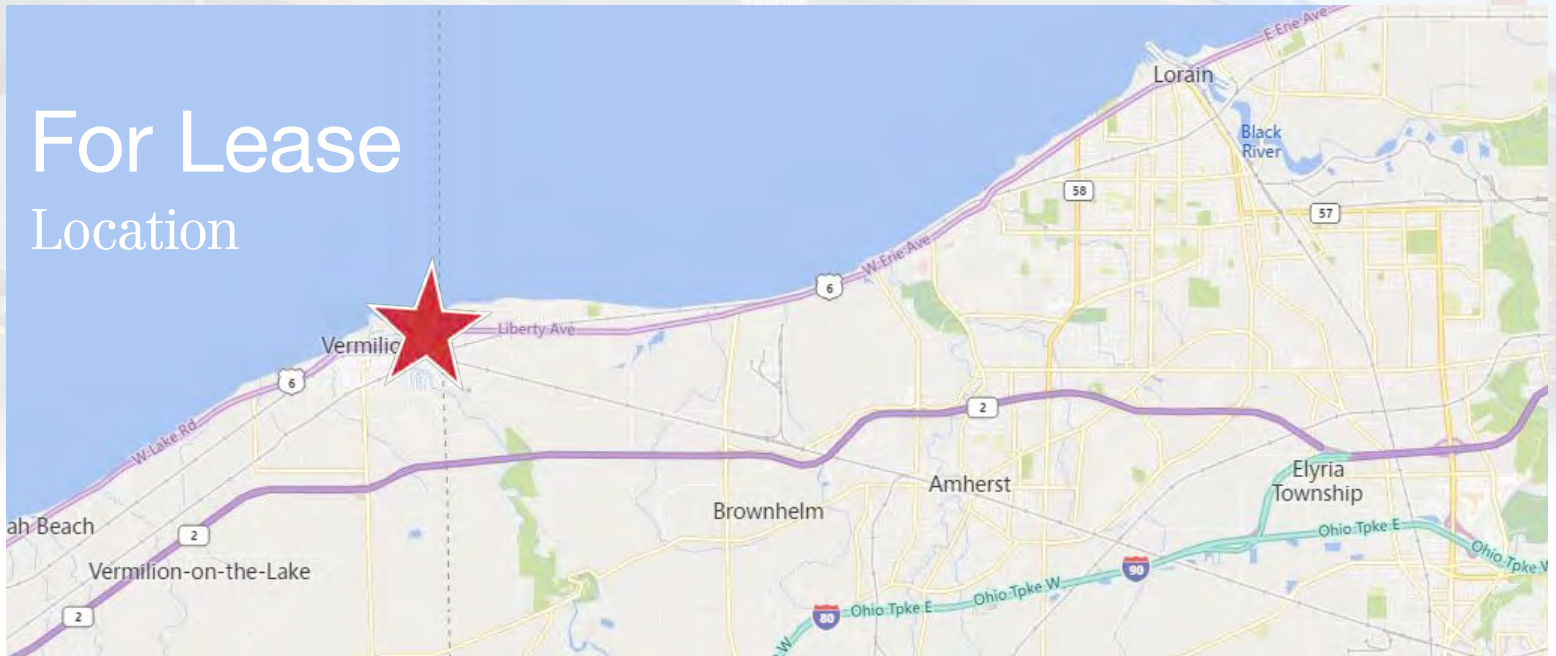
Hiedi Winston
+1 440 752 2617
hwinston@naipvc.com

4807 Liberty Ave. 2,000 SF



Hiedi Winston
+1 440 752 2617
hwinston@naipvc.com

For Lease
Location



Hiedi Winston
+1 440 752 2617
hwinston@naipvc.com

NO WARRANTY OR REPRESENTATION, EXPRESS OR IMPLIED, IS MADE AS TO THE ACCURACY OF THE INFORMATION CONTAINED HEREIN, AND THE SAME IS SUBMITTED SUBJECT TO ERRORS, OMISSIONS, CHANGE OF PRICE, RENTAL OR OTHER CONDITIONS, PRIOR SALE, LEASE OR FINANCING, OR WITHDRAWAL WITHOUT NOTICE, AND OF ANY SPECIAL LISTING CONDITIONS IMPOSED BY OUR PRINCIPALS NO WARRANTIES OR REPRESENTATIONS ARE MADE AS TO THE CONDITION OF THE PROPERTY OR ANY HAZARDS CONTAINED THEREIN ARE ANY TO BE IMPLIED.

6060 Rockside Woods Blvd. , Suite 402
Independence, Ohio 44131
+1 216 831 3310
naipvc.com



Hiedi Winston
 +1 440 752 2617
 hwinston@naipvc.com

NO WARRANTY OR REPRESENTATION, EXPRESS OR IMPLIED, IS MADE AS TO THE ACCURACY OF THE INFORMATION CONTAINED HEREIN, AND THE SAME IS SUBMITTED SUBJECT TO ERRORS, OMISSIONS, CHANGE OF PRICE, RENTAL OR OTHER CONDITIONS, PRIOR SALE, LEASE OR FINANCING, OR WITHDRAWAL WITHOUT NOTICE, AND OF ANY SPECIAL LISTING CONDITIONS IMPOSED BY OUR PRINCIPALS NO WARRANTIES OR REPRESENTATIONS ARE MADE AS TO THE CONDITION OF THE PROPERTY OR ANY HAZARDS CONTAINED THEREIN ARE ANY TO BE IMPLIED.

6060 Rockside Woods Blvd. , Suite 402
 Independence, Ohio 44131
 +1 216 831 3310
 naipvc.com

KEY FACTS

4,155

Population

46.7

Median Age



2.1

Average Household Size

\$65,846

Median Household Income

EDUCATION

7%

No High School Diploma



31%

High School Graduate



28%

Some College



34%

Bachelor's/Grad/Pr of Degree

BUSINESS



235

Total Businesses



2,000

Total Employees

EMPLOYMENT



56%

White Collar



30%

Blue Collar



14%

Services

4.3%

Unemployment Rate

INCOME



\$65,846

Median Household Income



\$40,563

Per Capita Income



\$193,573

Median Net Worth

Households By Income

The largest group: \$50,000 - \$74,999 (21.9%)

The smallest group: \$15,000 - \$24,999 (5.6%)

Indicator ▲	Value	Diff	
<\$15,000	7.0%	-1.2%	<div style="width: 100%; height: 10px; background-color: red;"></div>
\$15,000 - \$24,999	5.6%	-0.9%	<div style="width: 100%; height: 10px; background-color: red;"></div>
\$25,000 - \$34,999	7.8%	+0.1%	<div style="width: 100%; height: 10px; background-color: gray;"></div>
\$35,000 - \$49,999	13.8%	+0.3%	<div style="width: 100%; height: 10px; background-color: gray;"></div>
\$50,000 - \$74,999	21.9%	+3.1%	<div style="width: 100%; height: 10px; background-color: gray;"></div>
\$75,000 - \$99,999	13.9%	-3.1%	<div style="width: 100%; height: 10px; background-color: red;"></div>
\$100,000 - \$149,999	18.5%	-0.6%	<div style="width: 100%; height: 10px; background-color: red;"></div>
\$150,000 - \$199,999	5.7%	-0.2%	<div style="width: 100%; height: 10px; background-color: red;"></div>
\$200,000+	5.8%	+2.6%	<div style="width: 100%; height: 10px; background-color: gray;"></div>

Bars show deviation from Erie County

This infographic contains data provided by Esri, Esri and Infogroup. The vintage of the data is 2022, 2027.

© 2021 Esri

Hiedi Winston

+1 440 752 2617

hwinston@naipvc.com

KEY FACTS

11,647

Population



2.2

Average Household Size

47.5

Median Age

\$67,432

Median Household Income

EDUCATION

8%

No High School Diploma



32%

High School Graduate



29%

Some College



30%

Bachelor's/Grad/Pr of Degree

BUSINESS



404

Total Businesses



3,396

Total Employees

EMPLOYMENT



56%

White Collar



30%

Blue Collar



14%

Services

3.7%

Unemployment Rate

INCOME



\$67,432

Median Household Income



\$39,119

Per Capita Income



\$191,352

Median Net Worth

Households By Income

The largest group: \$50,000 - \$74,999 (20.5%)

The smallest group: \$200,000+ (5.0%)

Indicator ▲	Value	Diff	
<\$15,000	7.1%	-1.1%	
\$15,000 - \$24,999	5.3%	-1.2%	
\$25,000 - \$34,999	7.9%	+0.2%	
\$35,000 - \$49,999	14.0%	+0.5%	
\$50,000 - \$74,999	20.5%	+1.7%	
\$75,000 - \$99,999	16.2%	-0.8%	
\$100,000 - \$149,999	18.7%	-0.4%	
\$150,000 - \$199,999	5.4%	-0.5%	
\$200,000+	5.0%	+1.8%	

Bars show deviation from Erie County

This infographic contains data provided by Esri, Esri and Infogroup. The vintage of the data is 2022, 2027.

© 2021 Esri

Hiedi Winston
+1 440 752 2617
hwinston@naipvc.com

KEY FACTS

16,080

Population



2.3

Average Household Size

48.3

Median Age

\$70,689

Median Household Income

EDUCATION

8%

No High School Diploma



33%

High School Graduate



30%

Some College



29%

Bachelor's/Grad/Pr of Degree

BUSINESS



512

Total Businesses



4,574

Total Employees

EMPLOYMENT



55%

White Collar



31%

Blue Collar



14%

Services

3.4%

Unemployment Rate

INCOME



\$70,689

Median Household Income



\$39,754

Per Capita Income



\$218,153

Median Net Worth

Households By Income

The largest group: \$50,000 - \$74,999 (20.5%)

The smallest group: \$15,000 - \$24,999 (4.7%)

Indicator ▲	Value	Diff	
<\$15,000	6.4%	-1.8%	
\$15,000 - \$24,999	4.7%	-1.8%	
\$25,000 - \$34,999	7.3%	-0.4%	
\$35,000 - \$49,999	13.7%	+0.2%	
\$50,000 - \$74,999	20.5%	+1.7%	
\$75,000 - \$99,999	16.8%	-0.2%	
\$100,000 - \$149,999	19.4%	+0.3%	
\$150,000 - \$199,999	6.1%	+0.2%	
\$200,000+	5.1%	+1.9%	

Bars show deviation from Erie County

This infographic contains data provided by Esri, Esri and Infogroup. The vintage of the data is 2022, 2027.

© 2021 Esri

Hiedi Winston

+1 440 752 2617

hwinston@naipvc.com