

# FOR LEASE



2805 OLD POST ROAD  
**HARRISBURG, PA 17110**



CUSHMAN &  
WAKEFIELD



# PROPERTY HIGHLIGHTS

- Great mix of private offices and open space
- **Suite Sizes Available:**  
Suite 300 - 5,575 SF
- Window lines on all sides of space with great views of wooded setting
- Production room, server room, and kitchenette/break room in suite
- Outstanding location with great access to amenities both current and future, including Susquehanna Union Green and Blue Ridge Village projects
- Easily access Rt. 322, I-81 and I-83

## Property Details

Property Type	Office
Building Size	31,788 SF
Available SF	3rd Floor - Suite 300 5,575 SF
Lease Rate	\$18.95 SF/yr (MG)
Lot Size	2.7 acres
Building Class	A
Year Built	2002
Number of Floors	3
Parking Spaces	159
Free Standing	Yes

5,575 square feet of high-end Class A office space in plug-and-play condition with a great location in Sturbridge Business Park. Unparalleled access to new and future amenities on the Linglestown Road corridor, including Blue Ridge Village and Susquehanna Union Green.

Available space is excellent for any professional services user or non-profit, featuring window lines on all sides with amazing views, a great mix of private offices and open space, conferencing facilities, production room, server room, and kitchenette/break room.

Impeccably maintained building features top-of-class architectural details including a dramatic 3-story atrium lobby as well as functional features like state-of-the-art security and broadband/voice connections, available secure storage units in the building with drive-in access, and a 5.0/1000 parking ratio. Located ½ mile from intersection of Linglestown Road and Progress Avenue, with easy access to Rt. 322, I-81 and I-83.



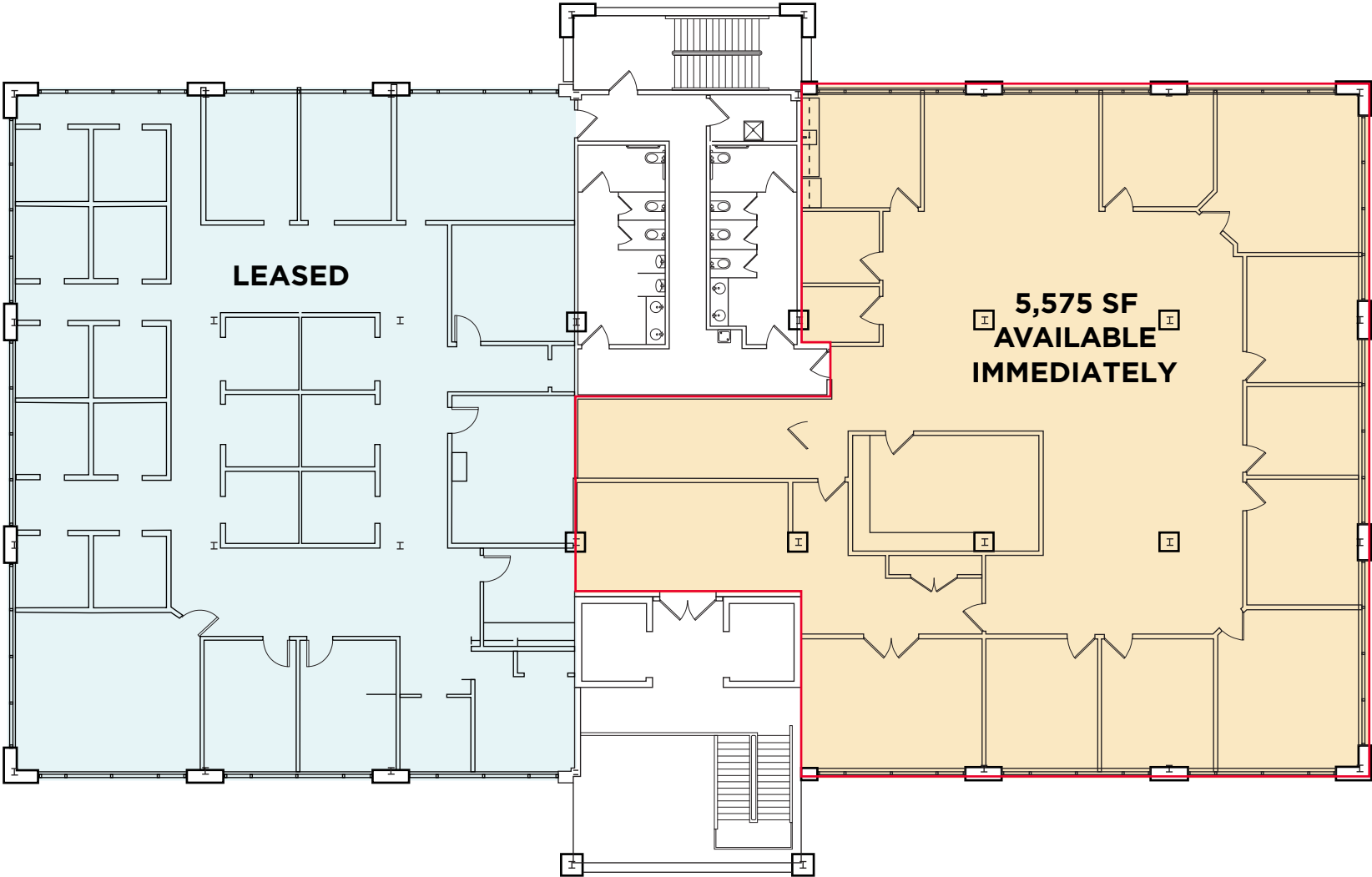
2805 Old Post Road | Harrisburg, PA 17110

# PROPERTY INTERIOR



# FLOOR PLAN

3rd Floor - 5,575 SF





# AREA AMENITIES



# CONTACT INFORMATION

## **JASON SOURBEER**

Director

+1 717 231 7451

[jason.sourbeer@cushwake.com](mailto:jason.sourbeer@cushwake.com)

4423 North Front Street  
Harrisburg, PA 17110 | USA  
+1 717 231 7290

[cushmanwakefield.com](https://cushmanwakefield.com)



©2025 Cushman & Wakefield. All rights reserved. The information contained in this communication is strictly confidential. This information has been obtained from sources believed to be reliable but has not been verified. NO WARRANTY OR REPRESENTATION, EXPRESS OR IMPLIED, IS MADE AS TO THE CONDITION OF THE PROPERTY (OR PROPERTIES) REFERENCED HEREIN OR AS TO THE ACCURACY OR COMPLETENESS OF THE INFORMATION CONTAINED HEREIN, AND SAME IS SUBMITTED SUBJECT TO ERRORS, OMISSIONS, CHANGE OF PRICE, RENTAL OR OTHER CONDITIONS, WITHDRAWAL WITHOUT NOTICE, AND TO ANY SPECIAL LISTING CONDITIONS IMPOSED BY THE PROPERTY OWNER(S). ANY PROJECTIONS, OPINIONS OR ESTIMATES ARE SUBJECT TO UNCERTAINTY AND DO NOT SIGNIFY CURRENT OR FUTURE PROPERTY PERFORMANCE.