



Alex Rodriguez-Torres

P: (772) 353-0638 | E: rteincorporated@aol.com

1847 SE Port Saint Lucie Blvd. Port Saint Lucie, FL 34952



Commercial General Development

3752 SW Port Saint Lucie Blvd. PSL, FL 34953

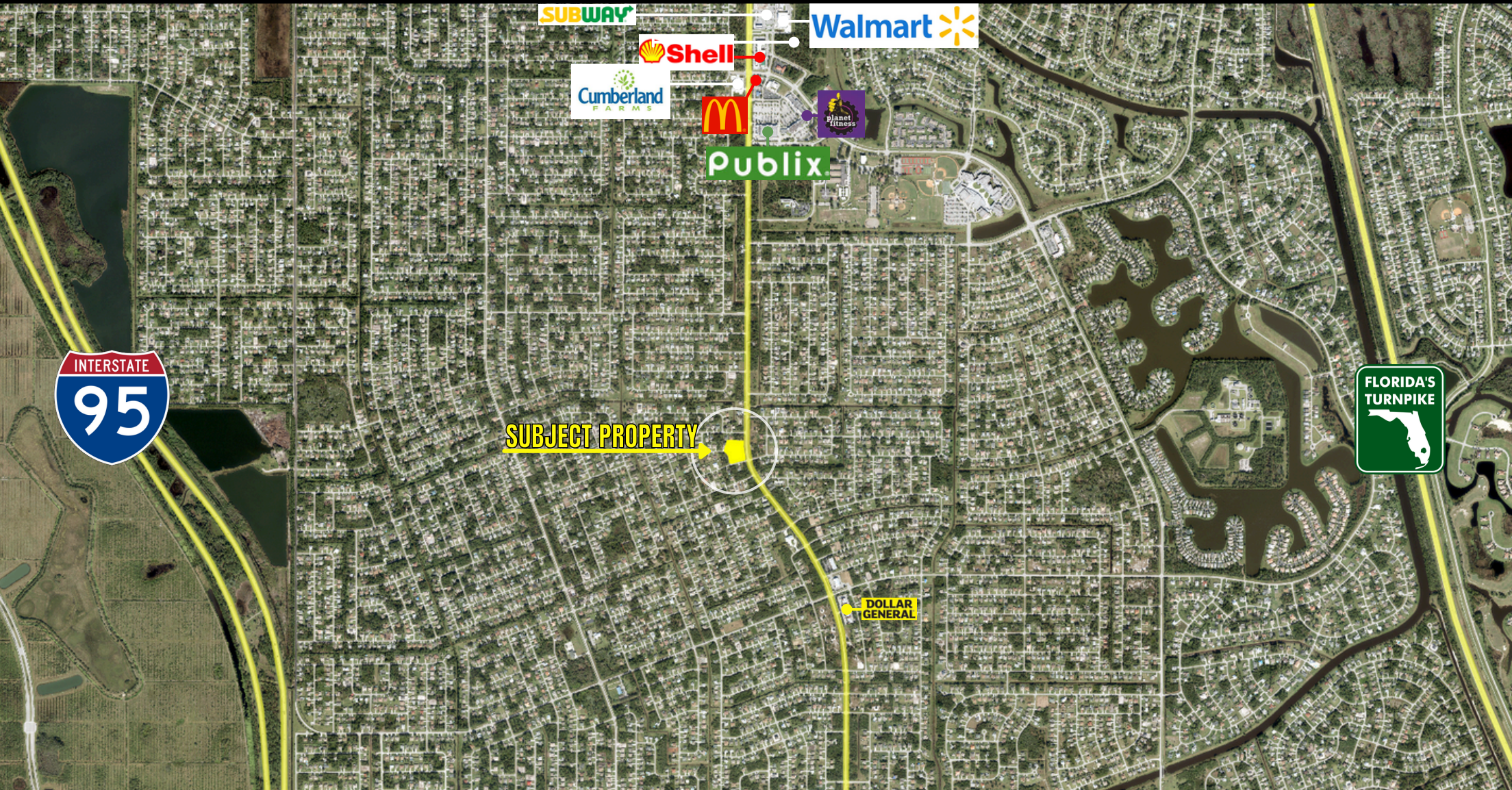
For Sale | \$1,500,000



Alex Rodriguez-Torres

P: (772) 353-0638 | E: rteincorporated@aol.com

1847 SE Port Saint Lucie Blvd. Port Saint Lucie, FL 34952



Alex Rodriguez-Torres

P: (772) 353-0638 | E: rteincorporated@aol.com

1847 SE Port Saint Lucie Blvd. Port Saint Lucie, FL 34952

Prime location, with over 250 feet directly on Port St Lucie Blvd.

This vacant parcel consists of 4 parcels, currently zoned commercial general.

Perfect development opportunity in one of the fastest-growing areas of Port St Lucie.

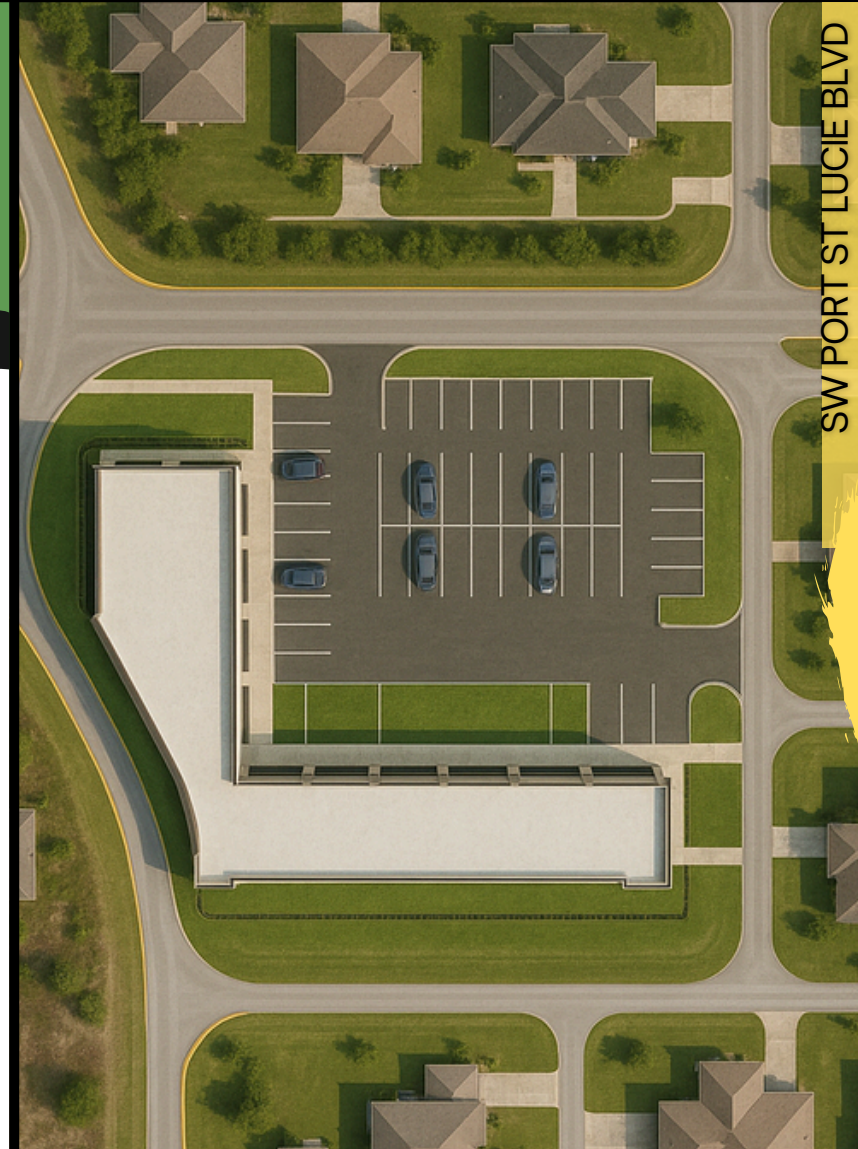
Proposed Price	\$799K
----------------	--------

Acreage.	1.74 Acres
----------	------------

Land Size	2,209.513 Perimeter
-----------	---------------------

Land Type	Vacant Land
-----------	-------------

Zoning	Commercial General
--------	--------------------



Alex Rodriguez-Torres

P: (772) 353-0638 | E: rteincorporated@aol.com

1847 SE Port Saint Lucie Blvd. Port Saint Lucie, FL 34952

Age

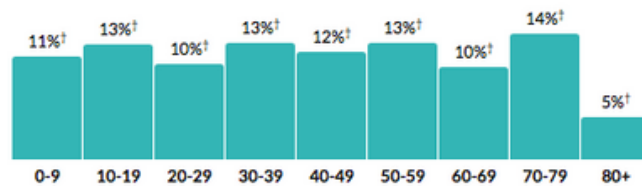
42.3

Median age

about 90 percent of the figure in the Port St. Lucie, FL Metro Area: 48.2

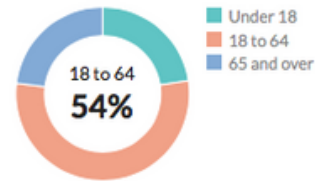
about the same as the figure in Florida: 42.4

Population by age range



[Show data / Embed](#)

Population by age category



[Show data / Embed](#)

Income

\$28,924

Per capita income

about 80 percent of the amount in the Port St. Lucie, FL Metro Area: \$34,456

about 90 percent of the amount in Florida: \$32,887

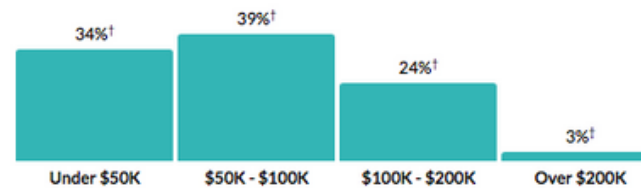
\$68,041

Median household income

about 10 percent higher than the amount in the Port St. Lucie, FL Metro Area: \$62,608

about 20 percent higher than the amount in Florida: \$59,227

Household income



[Show data / Embed](#)

Households

68,484

Number of households

the Port St. Lucie, FL Metro Area: 181,914
Florida: 7,905,832

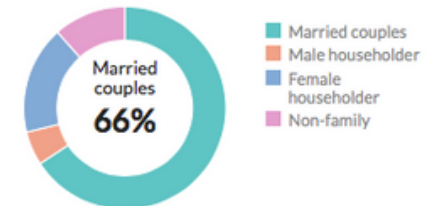
2.9

Persons per household

about 10 percent higher than the figure in the Port St. Lucie, FL Metro Area: 2.7

about 10 percent higher than the figure in Florida: 2.7

Population by household type



[Show data / Embed](#)

2019 Demographics

Alex Rodriguez-Torres

P: (772) 353-0638 | E: rteincorporated@aol.com

1847 SE Port Saint Lucie Blvd. Port Saint Lucie, FL 34952