

LOST COAST OCEAN RANCH

±788 ACRES | 5,500 SF CUSTOM HOME

26000 Mattole Rd, Ferndale, CA 95536



CONTACT FOR PRICE

- 788 ACRES OF UNTAMED BEAUTY
- ONE MILE OF SECLUDED COASTLINE
- INFINITE POSSIBILITY

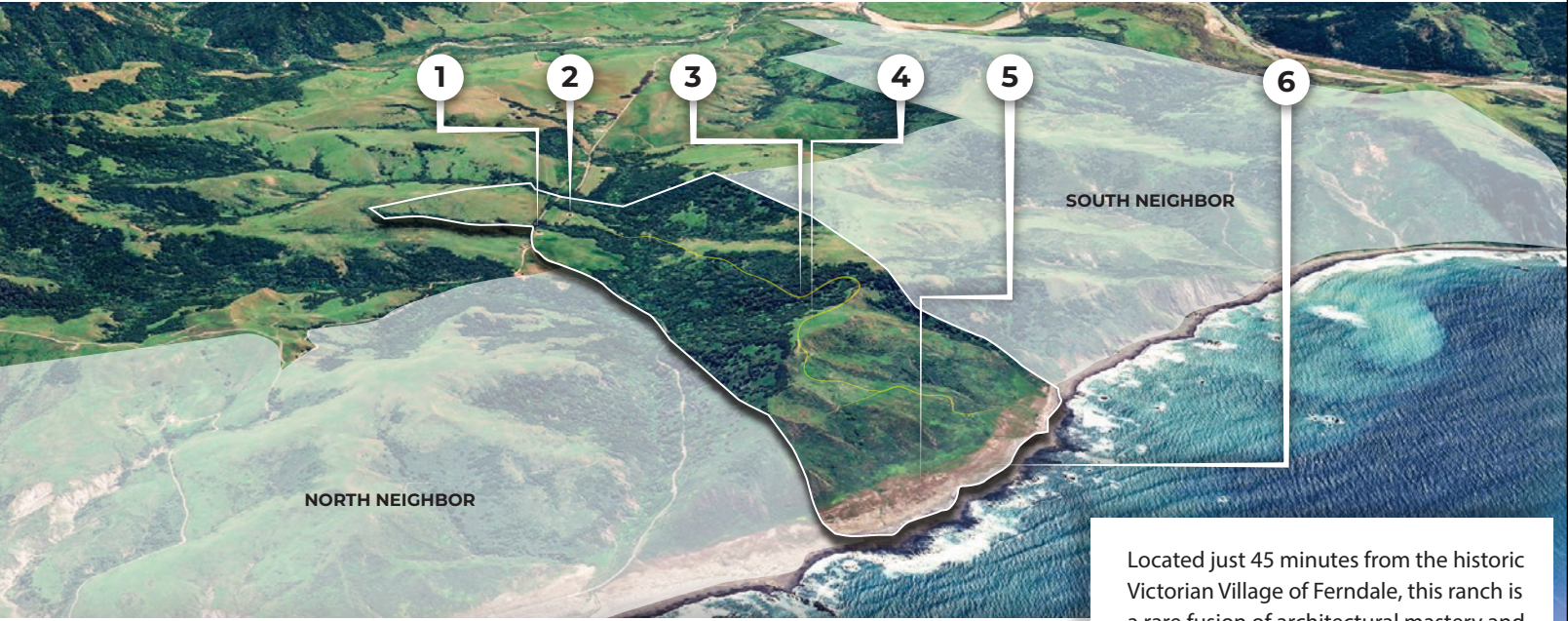
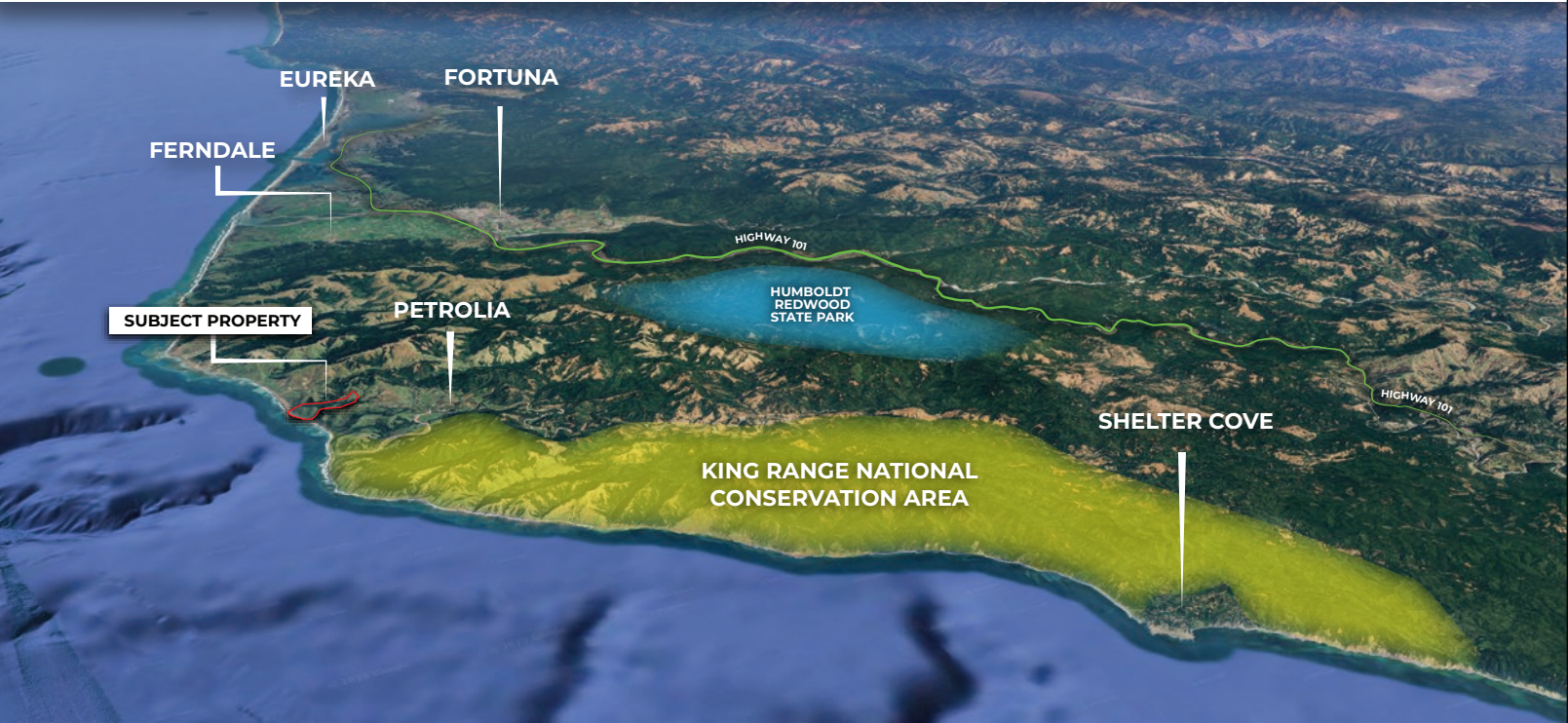
PROPERTY DESCRIPTION

A legendary California coastal estate featuring 788 acres, over 1 mile of secluded oceanfront, and a 5,500 sq ft custom stone residence crafted by the artisan behind Castello di Amorosa. Located 45 minutes from Ferndale, this rare offering blends luxury, working ranchland, and natural beauty. Features include a 900 sq ft stone garden house, handcrafted stone walls, Fleetwood glass, radiant floors, 40-ft glass sliders, Mendota fireplace, Sub-Zero, Wolf range, and more. Second story is unfinished with conceptual plans for 4 beds/3 baths. Property includes 100+ acres of flat oceanfront pasture, historic 1800s hay barn, abundant grazing, timber, year-round creek, and access to the Lost Coast Trail. Fully fenced and cross-fenced with 7 APNs across AE, AG, NR, and TC zoning.

LOST COAST OCEAN RANCH

26000 Mattole Rd, Ferndale, CA 95536

LOCATION



Located just 45 minutes from the historic Victorian Village of Ferndale, this ranch is a rare fusion of architectural mastery and working land. The journey to the property winds through open range and the dramatic cliffs of Cape Mendocino, culminating in a private sanctuary perched above the Pacific Ocean. Drive through the ranch over a hand-crafted stone arched bridge to the ocean side of the property, where gently terraced hillsides - untouched by erosion - lead to over 100 acres of flat oceanfront grassland and more than a mile of secluded shoreline, easily accessible via the ranch's extensive road system.

LOST COAST OCEAN RANCH

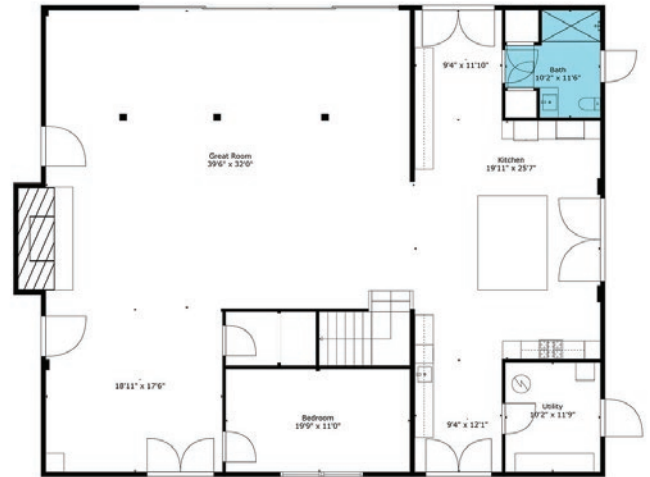
26000 Mattole Rd, Ferndale, CA 95536

CUSTOM RESIDENCE

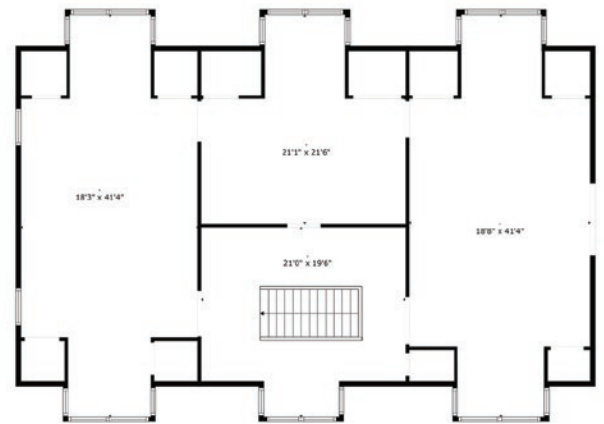
DETAILS

- 5,500 Sq ft custom stone residence
- Features hand-carved stone imported from a Napa Valley quarry
- Sleek black high-seam metal roof
- Custom all-glass massive dormers
- Fleetwood glass windows and doors
- Radiant heated concrete floors
- Mendota linear gas fireplace
- 40-foot sliding glass door for seamless indoor - outdoor living.

The main residence is equipped with modern amenities, including a Sub-Zero fridge/freezer, wine fridge, and a 60" Wolf double range oven. The massive open kitchen is ready for your final finishing touches. The second story remains unfinished - a blank canvas with conceptual plans for four bedrooms and three baths.



Sizes And Dimensions Are Approximate. Actual May Vary



Sizes And Dimensions Are Approximate. Actual May Vary



LOST COAST OCEAN RANCH

26000 Mattole Rd, Ferndale, CA 95536

GARDEN HOUSE & HISTORIC BARN



900 Sq ft stone garden house

Hand-crafted stone wall courtyard - all built by the artisan behind Napa Valley's famed Castello di Amorosa.

Historic hay barn dating back to the late 1800's

With large gated pasture space and easy access to property beach trails and timberland



LUXURY | LEGACY | LAND STEWARDSHIP

This estate is more than a showpiece. It is a fully fenced and cross-fenced working ranch. Abundant flat land offers sustainable grazing, potential carbon credit opportunities, rich timber resources, and a year-round creek. The land supports thriving wildlife habitat for deer, elk, wild hogs, bear, and turkey - plus recreational access to tide pools, camping, whale watching, and the world-renowned Lost Coast Trail.



LOST COAST OCEAN RANCH

26000 Mattole Rd, Ferndale, CA 95536

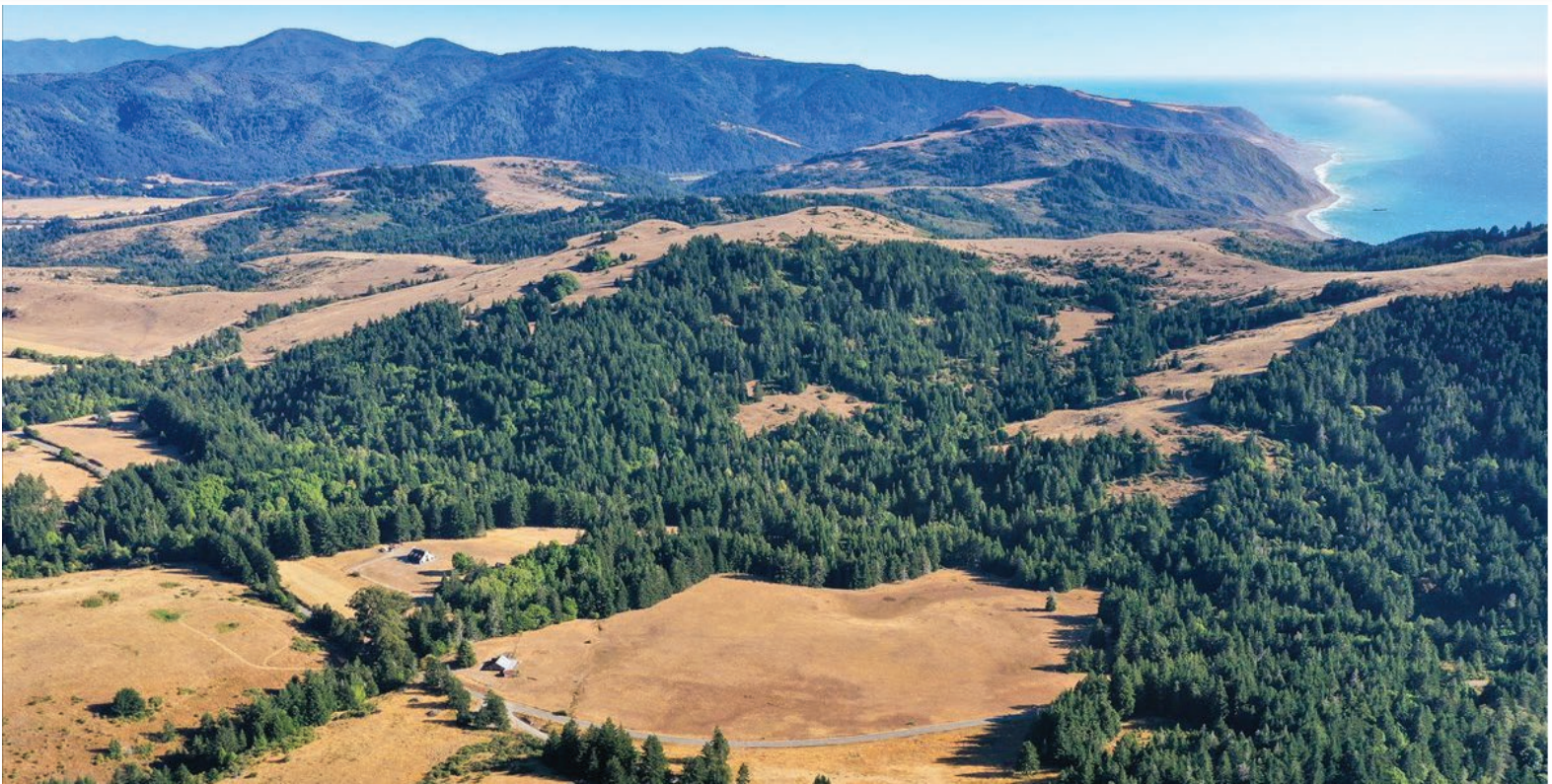
PROPERTY PHOTOS



LOST COAST OCEAN RANCH

26000 Mattole Rd, Ferndale, CA 95536

PROPERTY PHOTOS



www.LandXinc.com



NATHAN BAXLEY
Nathan@LandXinc.com

707-599-1886
DRE# 02097343