

# CBRE ±160,000 SF INDUSTRIAL HIGH BAY WITH CRANES



## AVAILABLE FOR SUBLEASE

**26800 MILES ROAD**  
**BEDFORD HEIGHTS, OHIO 44146**

### Michael Toth

Vice President  
+1 440 669 9422  
[michael.toth@cbre.com](mailto:michael.toth@cbre.com)

### Howard A. Lichtig, SIOR

Vice President  
+1 216 570 1800  
[howard.lichtig@cbre.com](mailto:howard.lichtig@cbre.com)

### David Ford, CCIM

Vice President  
+1 216 272 7276  
[david.ford@cbre.com](mailto:david.ford@cbre.com)



# ±160,000 SF INDUSTRIAL HIGH BAY CRANES AVAILABLE FOR SUBLEASE

26800 MILES ROAD  
BEDFORD HEIGHTS, OHIO 44146

---

## PROPERTY OVERVIEW

- 40' - Clear height
- 6 Oversized drive-in doors (17' x 15')
- 1 Dock door
- 2000 amps / 480V / 3-phase power
- 3 Restrooms
- Shop office
- Ample parking
- Trailer storage
- Rail served

## 3 CRANE BAYS WITH 9 CRANES

- Bay 1 - 590' x 77'
    - 20 ton crane
    - 15 ton crane
  - Bay 2 - 590' x 97'
    - 3 - 20 ton cranes
    - 15 ton crane
  - Bay 3 - 590' x 80'
    - 40 ton crane
    - 2 - 25 ton cranes
- Prime location with immediate access to I-480 & I-271
  - 15 minutes to downtown Cleveland
  - 15 minutes to Cleveland Hopkins Airport





**±160,000 SF INDUSTRIAL HIGH BAY CRANES  
AVAILABLE FOR SUBLEASE**  
26800 MILES ROAD  
BEDFORD HEIGHTS, OHIO 44146

---

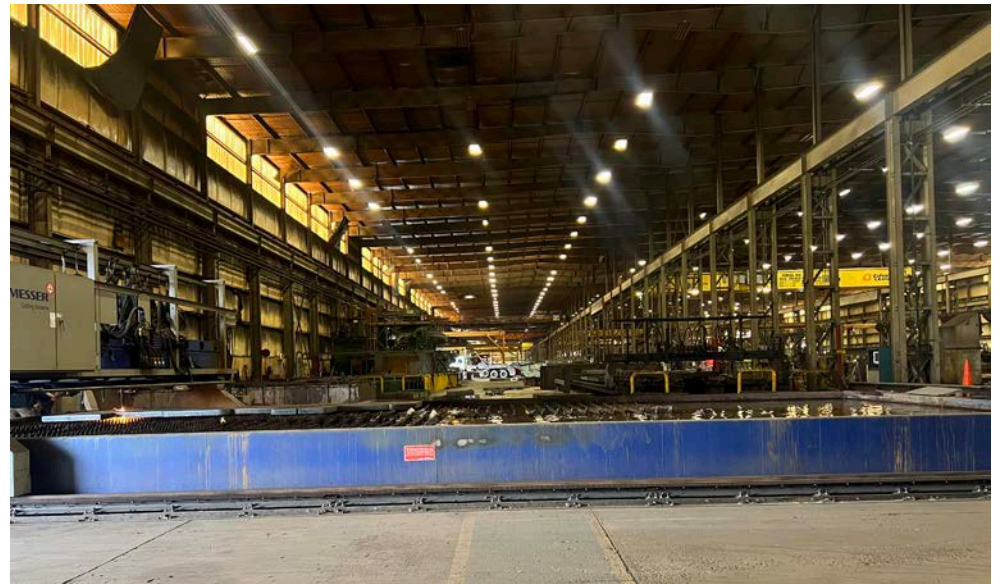
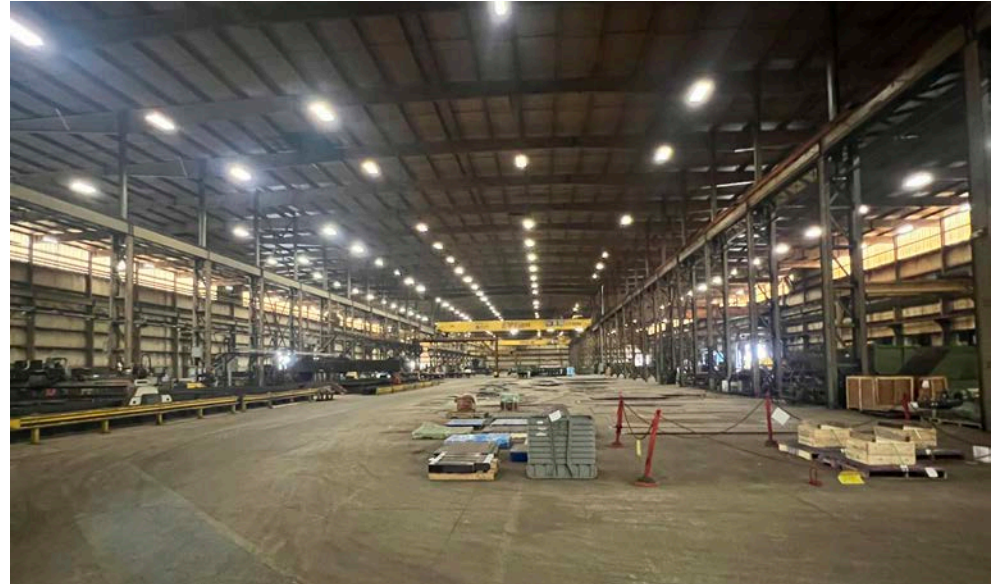
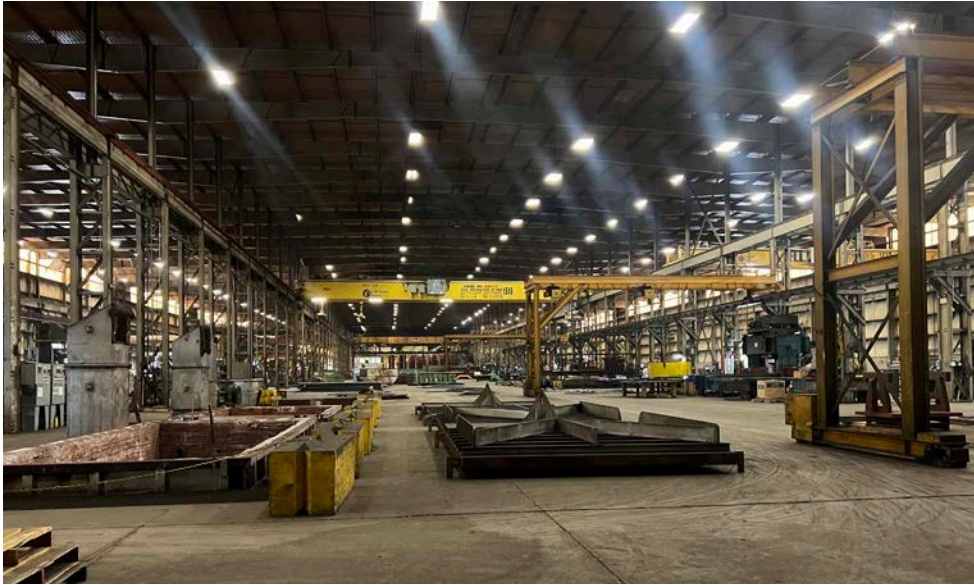




**±160,000 SF INDUSTRIAL HIGH BAY CRANES  
AVAILABLE FOR SUBLEASE**

**26800 MILES ROAD  
BEDFORD HEIGHTS, OHIO 44146**

---





±160,000 SF INDUSTRIAL HIGH BAY CRANES

# Aerial Map

---

**AVAILABLE FOR SUBLEASE**

26800 MILES ROAD

BEDFORD HEIGHTS, OHIO 44146





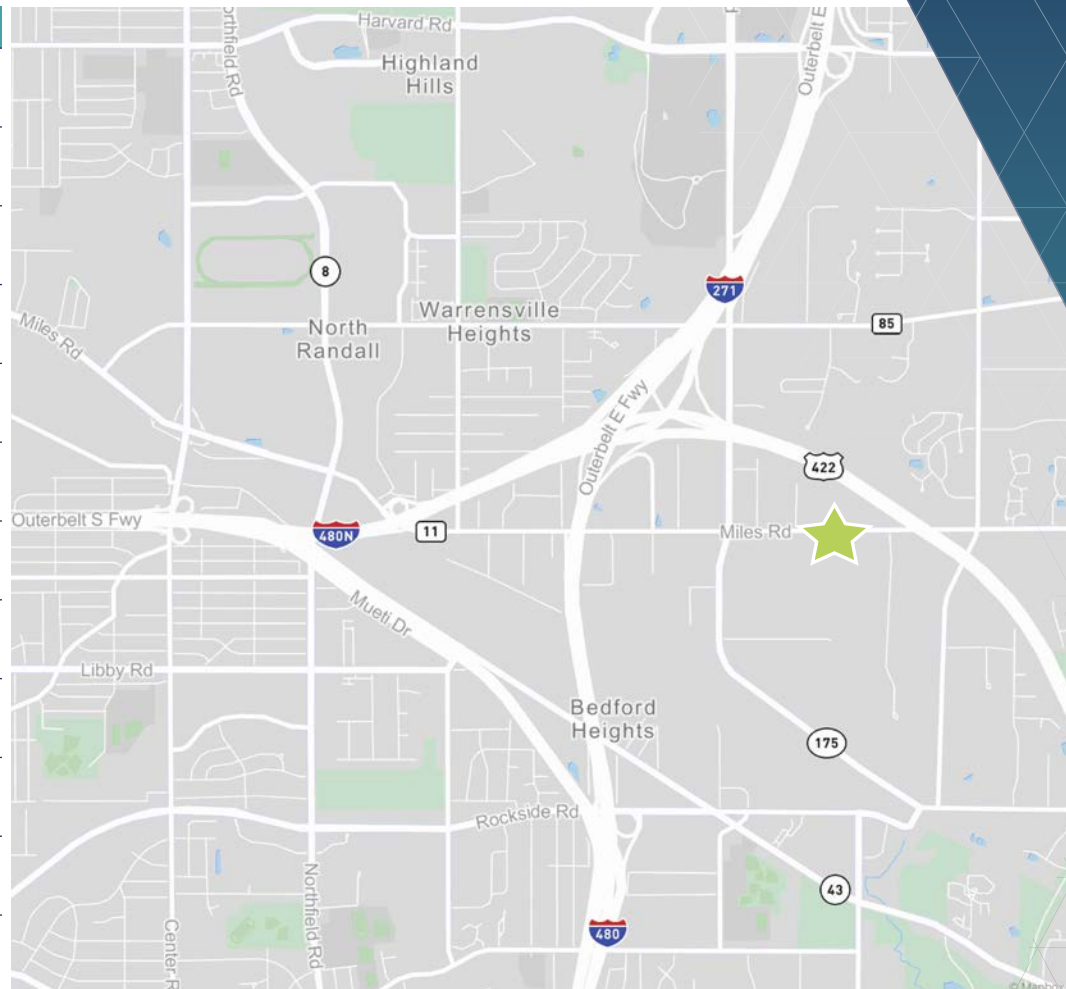
# Area Demographics

## AVAILABLE FOR SUBLEASE

26800 MILES ROAD

BEDFORD HEIGHTS, OHIO 44146

Demographic	1 Mile	3 Miles	5 Miles	10 Miles
2024 Businesses	511	3,740	7,967	24,461
2024 Employees	8,604	60,704	128,525	480,822
2024 Population	2,888	45,315	145,262	583,339
2024 Median Age	36.10	43.00	43.50	42.30
2024 Population 25 and Over	1,937	32,227	102,898	412,633
2024 Households	1,418	20,305	62,770	253,162
2024 Average Household Income	\$91,252	\$110,925	\$124,769	\$108,968
2024 Average Value of Owner Occ. Housing Units	\$336,684	\$307,155	\$302,626	\$292,326
2024 Daytime Population	9,212	78,244	190,165	702,422
Daytime Workers	7,828	55,302	117,458	402,811
Daytime Residents	1,384	22,942	72,707	299,611
2024 Average Household Size	2.03	2.20	2.28	2.25



© 2025 CBRE, Inc. All rights reserved. This information has been obtained from sources believed reliable, but has not been verified for accuracy or completeness. You should conduct a careful, independent investigation of the property and verify all information. Any reliance on this information is solely at your own risk. CBRE and the CBRE logo are service marks of CBRE, Inc. All other marks displayed on this document are the property of their respective owners, and the use of such logos does not imply any affiliation with or endorsement of CBRE. Photos herein are the property of their respective owners. Use of these images without the express written consent of the owner is prohibited. Licensed Real Estate Broker. CBRE, Inc., 950 Main Avenue, Suite 800, Cleveland, Ohio 44113.