

10105

BANBURRY CROSS DR

LAS VEGAS, NV 89144

SUMMERLIN III

MEDICAL OFFICE
FOR LEASE

Turnkey Suites
Now Available



MIKE TYMCZYN

VICE PRESIDENT
702.216.2371 **DIRECT**
miket@dcghealthcare.com
BS.0147041



HEALTHCARE



PROPERTY HIGHLIGHTS

- On the campus of Summerlin Hospital Medical Center
- Professional property management
- Build-to-suit shell space available
- Turn-Key suites available
- Generous tenant improvement allowances
- Current specialties include: **Pediatrics, Cardiology, Orthopedics and Pulmonology**



AREA MAP



SUMMERLIN PARKWAY



SUMMERLIN III

SUMMERLIN PARKWAY

SUMMERLIN I

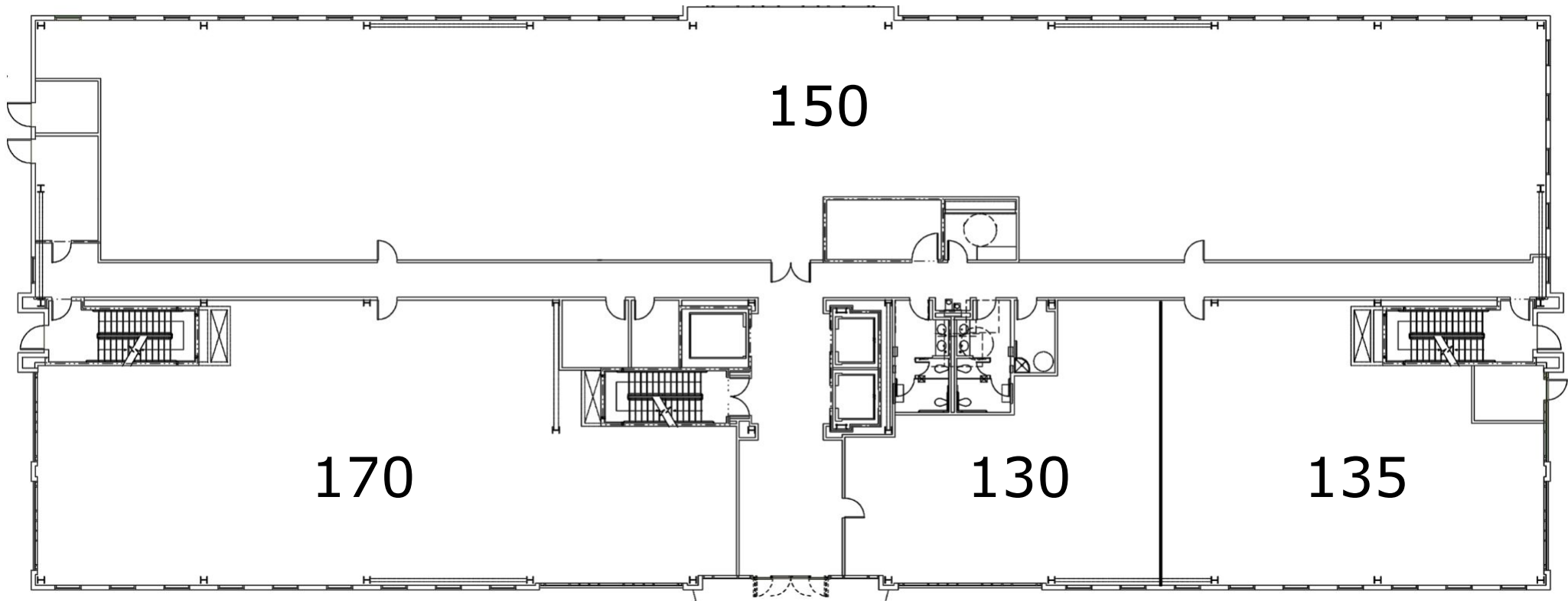
SUMMERLIN II

N HUALAPAI WAY

N TOWN CENTER DR



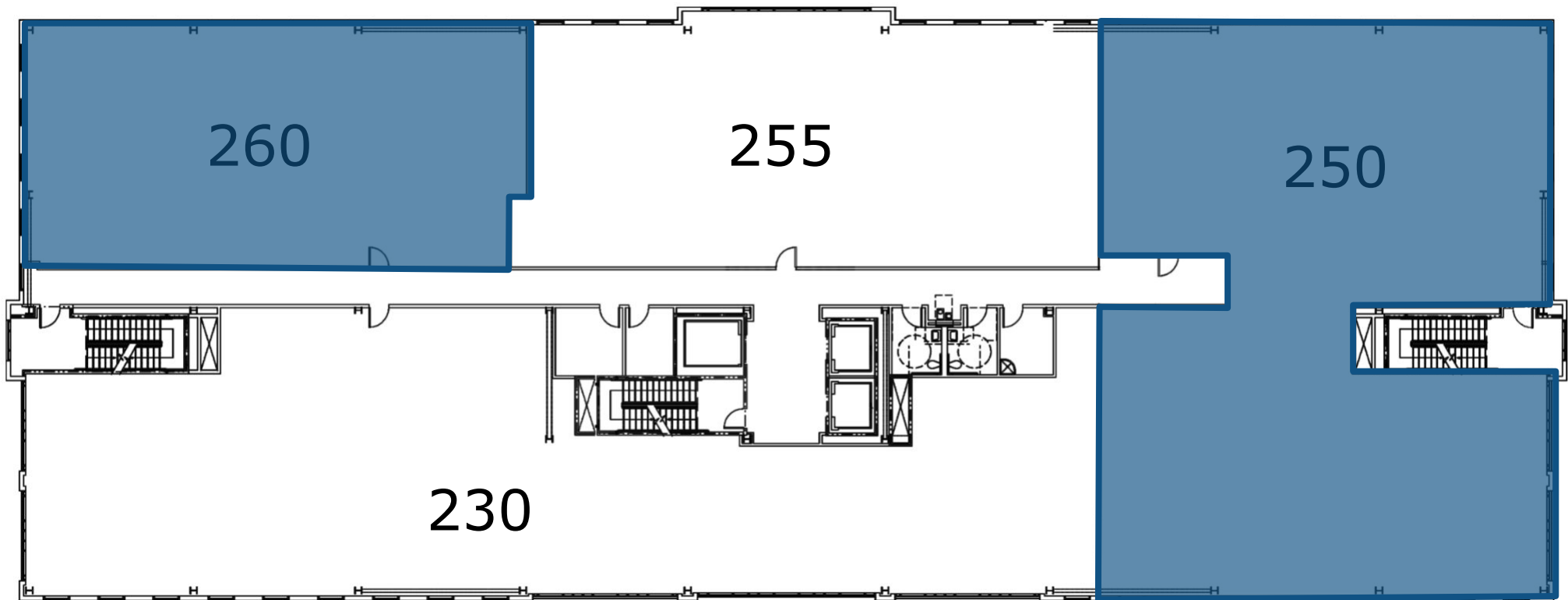
FIRST FLOOR



SECOND FLOOR

AVAILABLE SUITES

SUITE 250	6,730 SF TURN-KEY
SUITE 260	3,179 SF SHELL



SUITE 250 SUMMERLIN MEDICAL OFFICE III



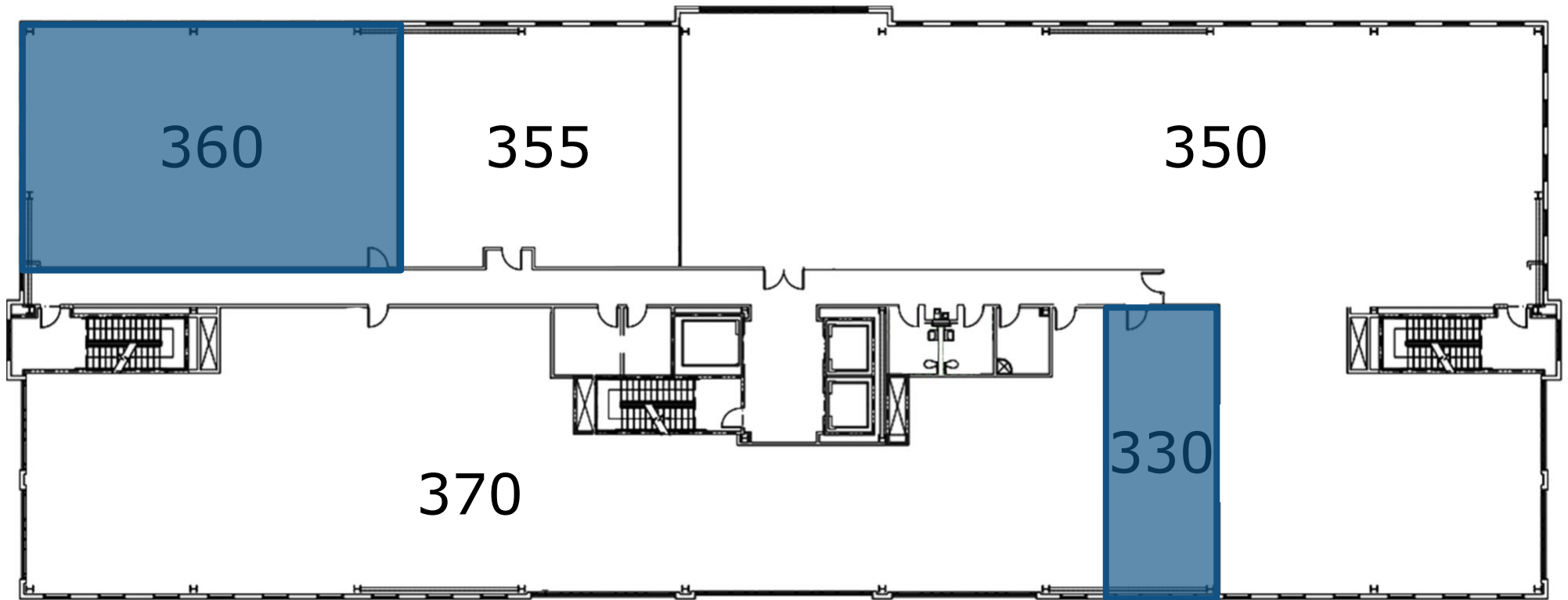
SUITE 250 SUMMERLIN MEDICAL OFFICE III



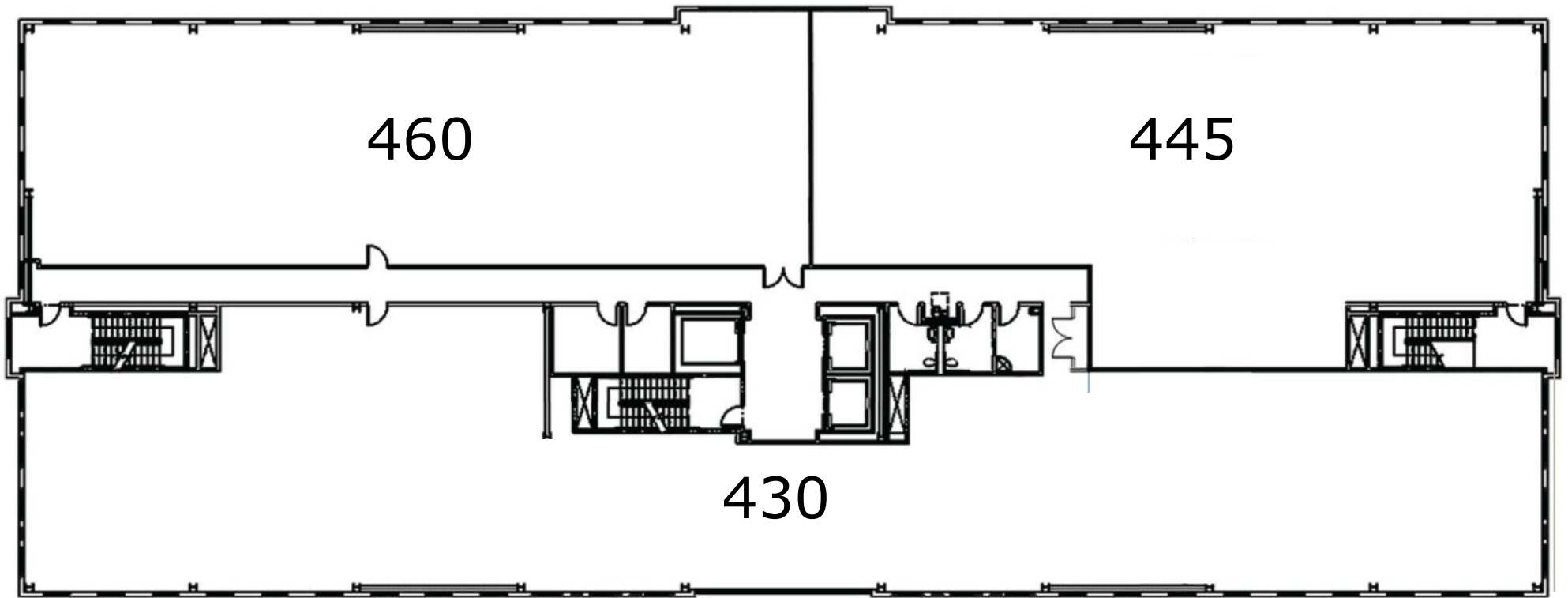
THIRD FLOOR

AVAILABLE SUITES

SUITE 330	1,130 SF SHELL
SUITE 360	2,594 SF SHELL



FOURTH FLOOR



HOSPITAL SERVICES



Cardiovascular

- Chest Pain Center
- Angioplasty
- Cardiac catheterization
- Pacemaker/defibrillator implants
- Bi-ventricular implants
- Peripheral vascular interventions
- Cardiovascular surgery
- Intravascular Ultrasound

Endoscopic Procedures

Laboratory Services

Maternity Services

- Triage
- Antepartum
- Labor and Delivery
- Postpartum
- Level I-II-III Neonatal ICU

Rehabilitation

- Inpatient Physical Therapy
- Speech Therapy
- Occupational Therapy
- Short-term inpatient rehabilitation unit

Diabetes Treatment Center

- Inpatient care

Dialysis

- Inpatient care

Emergency Services

- Urgent and emergency care 24/7
- Pediatric ER
- Advanced primary stroke center

Orthopedics

Radiology

- Angiography
- CT scan
- MRI
- Nuclear Medicine
- X-ray
- Digital Mammography

Surgery

- Inpatient
- Outpatient
- Robotic

Wound Care

- Inpatient care
- Outpatient care
- Hyperbaric medicine

MIKE TYMCZYN

VICE PRESIDENT

702.216.2371 **DIRECT**

miket@dcghealthcare.com

BS.0147041



HEALTHCARE

