



SOUTH PARK GROUP

www.southparkgroup.com



FOR LEASE

SECOND FLOOR CREATIVE OFFICE

8322 Beverly Boulevard, Suite 206
Los Angeles, California 90048

Concrete floors with exposed red brick walls. Beautiful courtyard patio on the 3rd floor. Centrally located between La Cienega & Crescent Heights close to Blue Bottle Coffee, Kings Road, BH Juice Club, Joan's on Third, Toast, Izakaya & many other shops and eateries.

AVAILABLE SPACE

Size: Approximately 1,600 rentable sqft

Rate: \$3.10 per sqft, Modified Gross

Parking: Available at \$150 per space

JACK RAVAN

Tel. 323.782.1270

E. jackravan@southparkgroup.com

No. 00890189

ETHAN WEBSTER

Tel. 323.782.1264

E. ethan@southparkgroup.com

No. 02225923

SOUTH PARK GROUP | 8322 Beverly Blvd., Suite 301 | Los Angeles, CA 90048

This information has been furnished by sources that we deem reliable, but for which we assume no liability. The information contained herein is given, in confidence, with the understanding that all negotiations pertaining to this property be handled through the submitting office. All measurements are approximate.

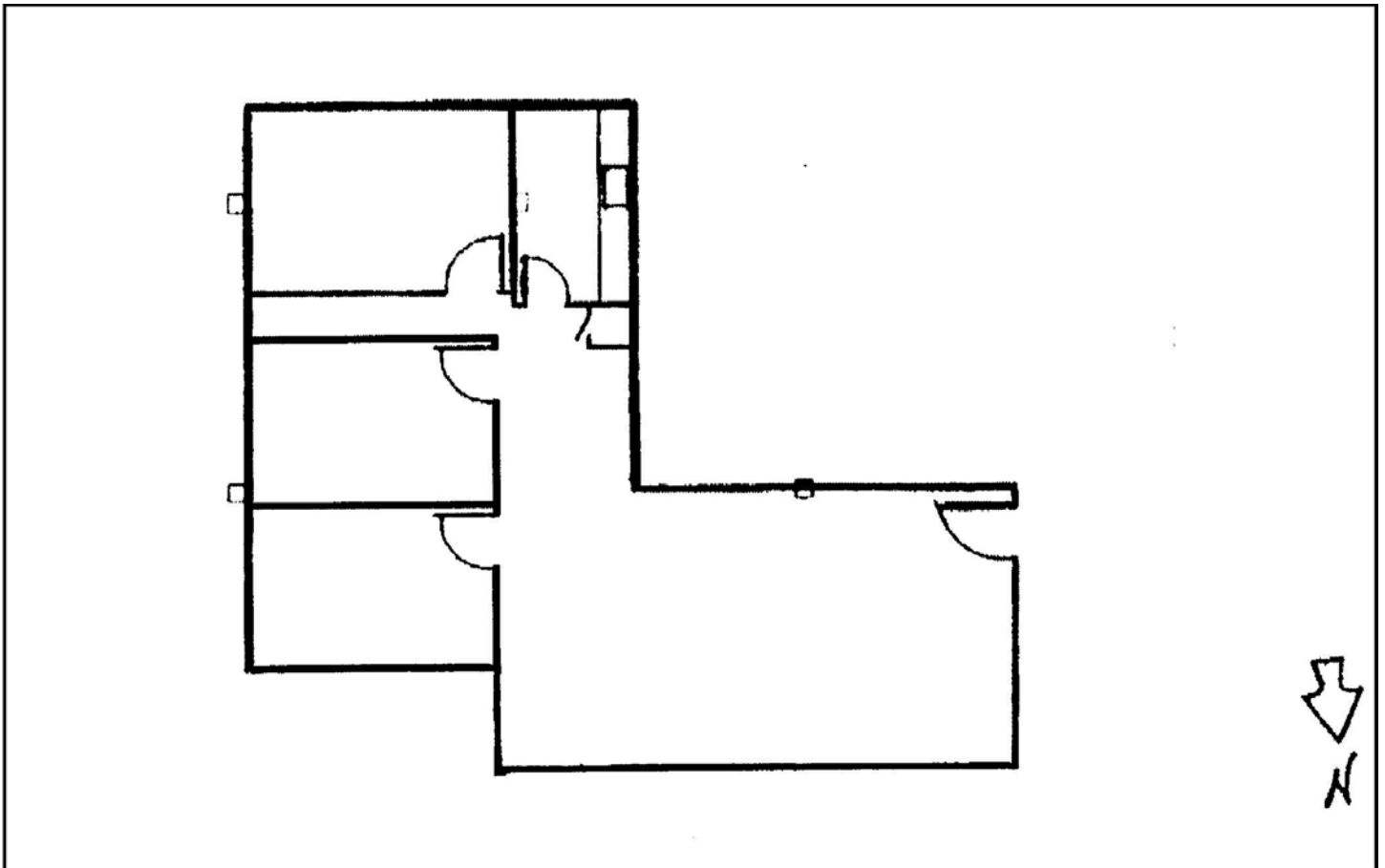


SOUTH PARK GROUP

www.southparkgroup.com

FLOOR PLAN

8322 Beverly Blvd., Suite 206, Los Angeles, California 90048



SOUTH PARK GROUP | 8322 Beverly Blvd., Suite 301 | Los Angeles, CA 90048

This information has been furnished by sources that we deem reliable, but for which we assume no liability. The information contained herein is given, in confidence, with the understanding that all negotiations pertaining to this property be handled through the submitting office. All measurements are approximate.

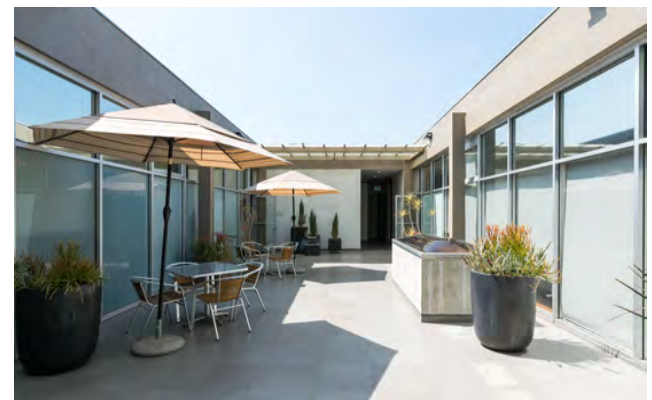
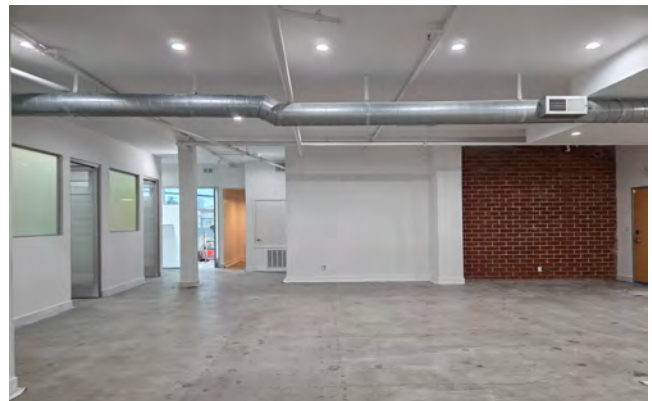
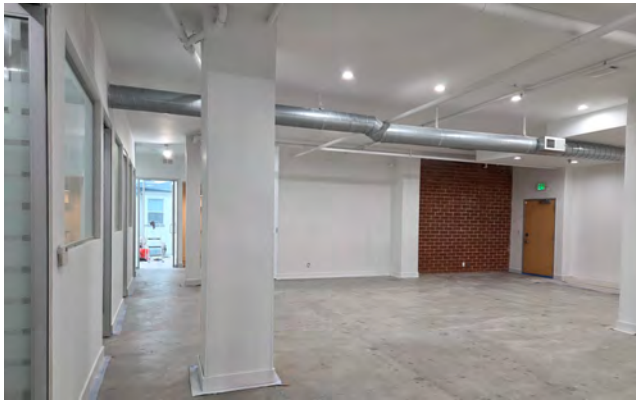


SOUTH PARK GROUP

www.southparkgroup.com

INTERIOR

8322 Beverly Blvd., Suite 206, Los Angeles, California 90048



SOUTH PARK GROUP | 8322 Beverly Blvd., Suite 301 | Los Angeles, CA 90048

This information has been furnished by sources that we deem reliable, but for which we assume no liability. The information contained herein is given, in confidence, with the understanding that all negotiations pertaining to this property be handled through the submitting office. All measurements are approximate.