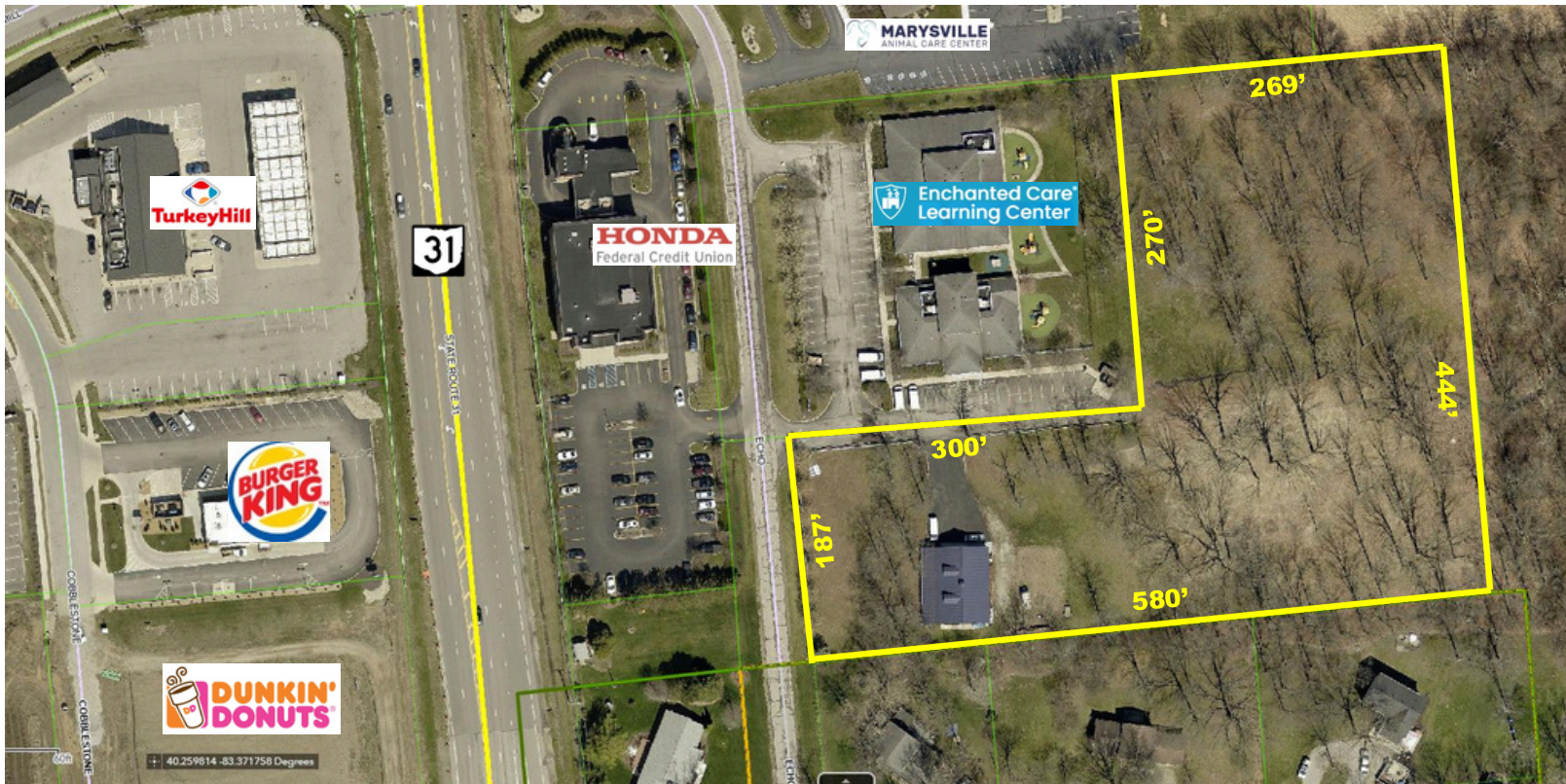


# LAND FOR SALE

4.35 ACRES

17650 Echo Drive, Marysville, OH 43040



[View Property](#)

## Property Highlights

- +/- 4.35 acres
- \$275,000 per acre
- All utilities available
- +/- 2,520 SF auto storage building on site (60' x 42')
- Located just off Ohio Route 31
- Surrounded by the brand-new Copper Run Apartment Complex, Cook's Pointe Apartments, & Redwood Apartments
- Ideal for Storage, Multi-Family, Event Center, or Redevelopment
- Zoned Suburban Commercial District (SCD)



*Auto Storage Building*



# LAND FOR SALE

4.35 ACRES

17650 Echo Drive, Marysville, OH 43040

**equity**  
Commercial Real Estate Solutions®



Nearby Copper Run Apartments



Nearby Redwood Apartments



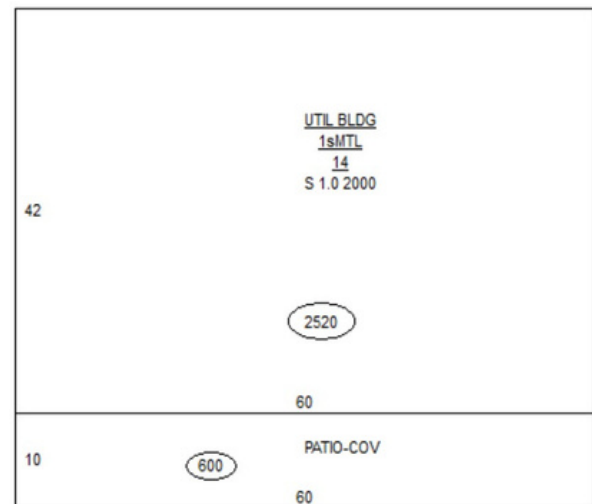
# LAND FOR SALE

4.35 ACRES

17650 Echo Drive, Marysville, OH 43040



## Additional Auto Storage



- 2,520 SF auto storage building (60' x 42')
- Building may be purchased separately from the rest of the available land

# LAND FOR SALE

## 4.35 ACRES

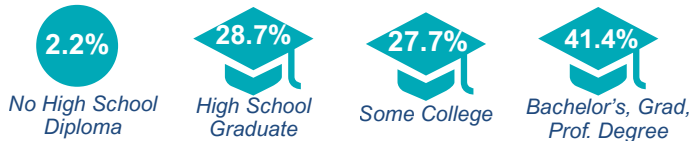
17650 Echo Drive, Marysville, OH 43040



## Area Information

2025 Est.	1 Mile	3 Miles	5 Miles
Population	9,722	27,787	35,400
Households	3,122	9,527	12,564
Med. HH Income	\$114,451	\$89,202	\$87,575
Total Employees	1,185	11,638	12,888
Total Businesses	107	842	968

## Education



## Traffic Counts



Union County is the 2<sup>nd</sup> fastest growing county in Ohio and 13<sup>th</sup> fastest growing county in America

## Equity Broker Contact



**Kyle Burrier**

Advisor

(614) 440-9127

[kburrier@equity.net](mailto:kburrier@equity.net)