

FOR SUBLEASE

**2901 Tasman Drive**

SUITE #205, Santa Clara 95054, California

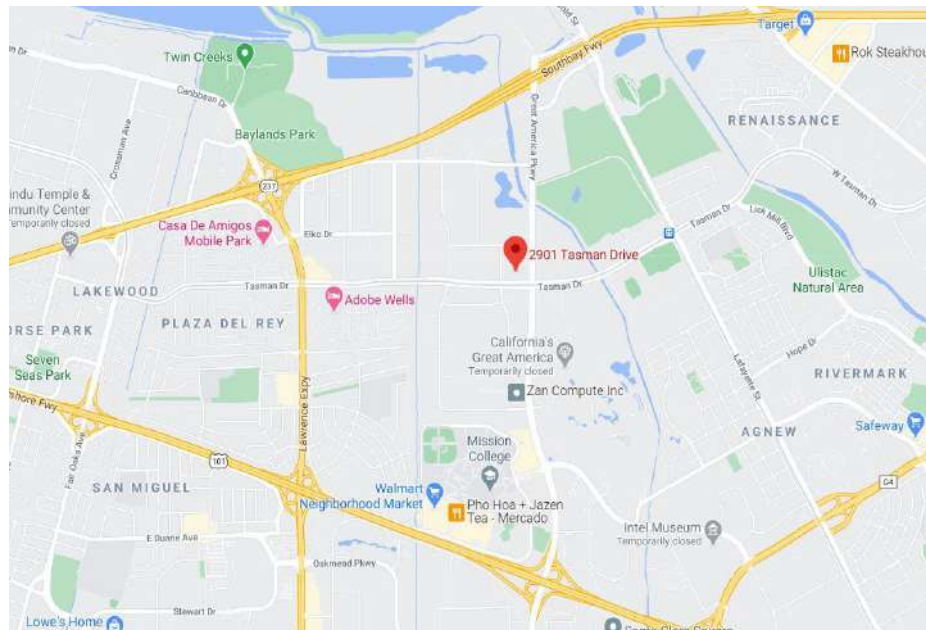


LED- 7/31/2022

**±10,205 SF Office Available**

### Property Highlights

- Directly Across from the Tasman Light Rail Station
- Walking Distance to Great America ACE train Station
- Close Proximity to Levi Stadium
- Walking Distance to Numerous Restaurants



5201 Great America Pkwy, Suite 455  
Santa Clara, California 95054  
Main +1 408 656 7683 | Fax +1 408 350 8369  
[www.s5cre.com](http://www.s5cre.com)

Bridget Fahey  
+1 650 862 0422  
[bridget@s5cre.com](mailto:bridget@s5cre.com)  
Lic #02013195

Minnie Mallick  
+1 303 847 6770  
[minnie@s5cre.com](mailto:minnie@s5cre.com)  
Lic #01983791

Sushma Malhotra  
+1 408 656 7683  
[sushma@s5cre.com](mailto:sushma@s5cre.com)  
Lic #01917419

S5 Advisory Copyright 2018. The information contained herein was lawfully obtained from sources we consider reliable. S5 Advisory is not responsible and expressly disclaims all liability, for errors, omissions, prior sales, withdrawal from the market or change in price. Seller (or Lessor, as the case may be) and broker make no representation as to the environmental condition of the property and recommend Purchaser's (or Lessee's) independent investigation.



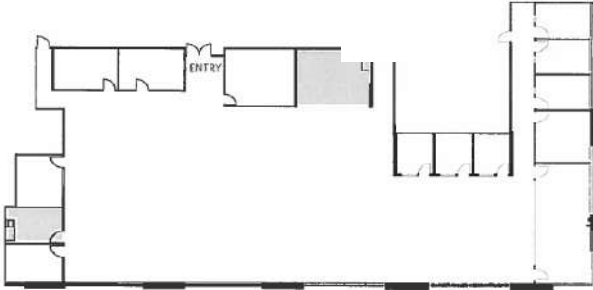
# FOR SUBLEASE

## 2901 Tasman Drive

SUITE #205, Santa Clara 95054, California

FLOOR PLAN

*Not to scale*



**± 10,205 SF Office Available**



5201 Great America Pkwy, Suite 455  
Santa Clara, California 95054  
Main +1 408 656 7683 | Fax +1 408 350 8369  
[www.s5cre.com](http://www.s5cre.com)

Bridget Fahey  
+1 650 862 0422  
[bridget@s5cre.com](mailto:bridget@s5cre.com)  
Lic #02013195

Minnie Mallick  
+1 303 847 6770  
[minnie@s5cre.com](mailto:minnie@s5cre.com)  
Lic #01983791

Sushma Malhotra  
+1 408 656 7683  
[sushma@s5cre.com](mailto:sushma@s5cre.com)  
Lic #01917419

S5 Advisory Copyright 2018. The information contained herein was lawfully obtained from sources we consider reliable. S5 Advisory is not responsible and expressly disclaims all liability, for errors, omissions, prior sales, withdrawal from the market or change in price. Seller (or Lessor, as the case may be) and broker make no representation as to the environmental condition of the property and recommend Purchaser's (or Lessee's) independent investigation.