

Sacramento, California



621 CAPITOL MALL

 VIEW VIRTUAL TOUR





[View More on the Website](#)

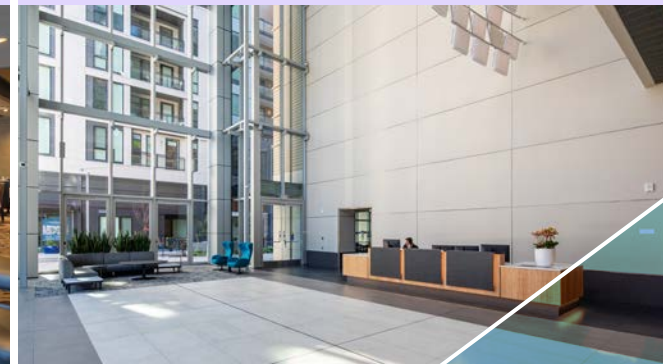
BUILDING FEATURES

- ±366,431 RSF Class A Building
- Stunning seven-level, open main lobby providing clear views to Capitol Mall
- New Tenant Lounge and Conference Center with new AV video conferencing technology
- LEED Gold and WELL Health Safety Certified
- On-site property manager and building engineers
- Prestigious tenant mix
- Parking Ratio: 2/1,000 USF, including electrical vehicle charging stations
- Newly remodeled fitness center, showers and lockers
- Storage space and secured bicycle lockers available
- Complimentary shuttle car service that will transport Tenants anywhere on the Downtown/Midtown grid
- 24/7 on-site security
- Ground floor retail includes Morton's Steakhouse, Shabu Shack, Sola Salon, AAA
- Dry cleaning services available
- Web-based building automation system
- The Frederic, is a Class A, 162-unit multifamily development completed in 2021. The property is adjacent to 621 Capitol Mall, in the center of Sacramento's thriving urban core
- Both 621 Capitol Mall and The Frederic are owned and managed by Shorenstein Properties

MORTON'S STEAKHOUSE



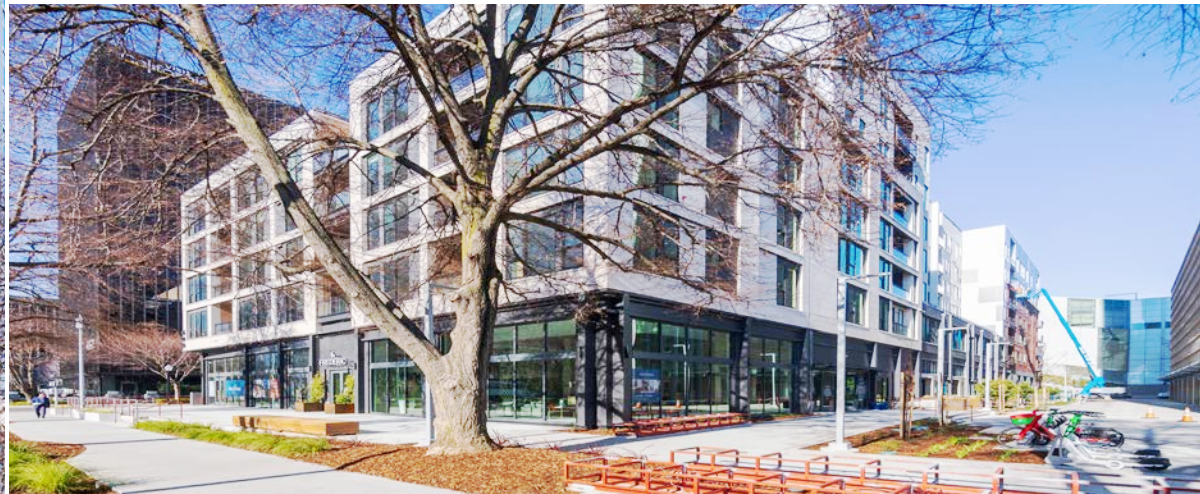
LOBBY REMODEL COMPLETED





THE FREDERIC

Sitting beside 621 Capitol Mall brings the first-ever residential and retail space on the Capitol Mall corridor. Just a block away from the DOCO and Golden 1 Center, The Frederic is a 162-unit luxury apartment complex with over 7,000 square feet of ground floor retail space. The wide-range of community amenities include a rooftop terrace with amazing city views, top floor lounge, outdoor seating area with fire bowls and grills, fitness center, bike storage, on-site parking, EV charging stations, pet spa and valet trash.





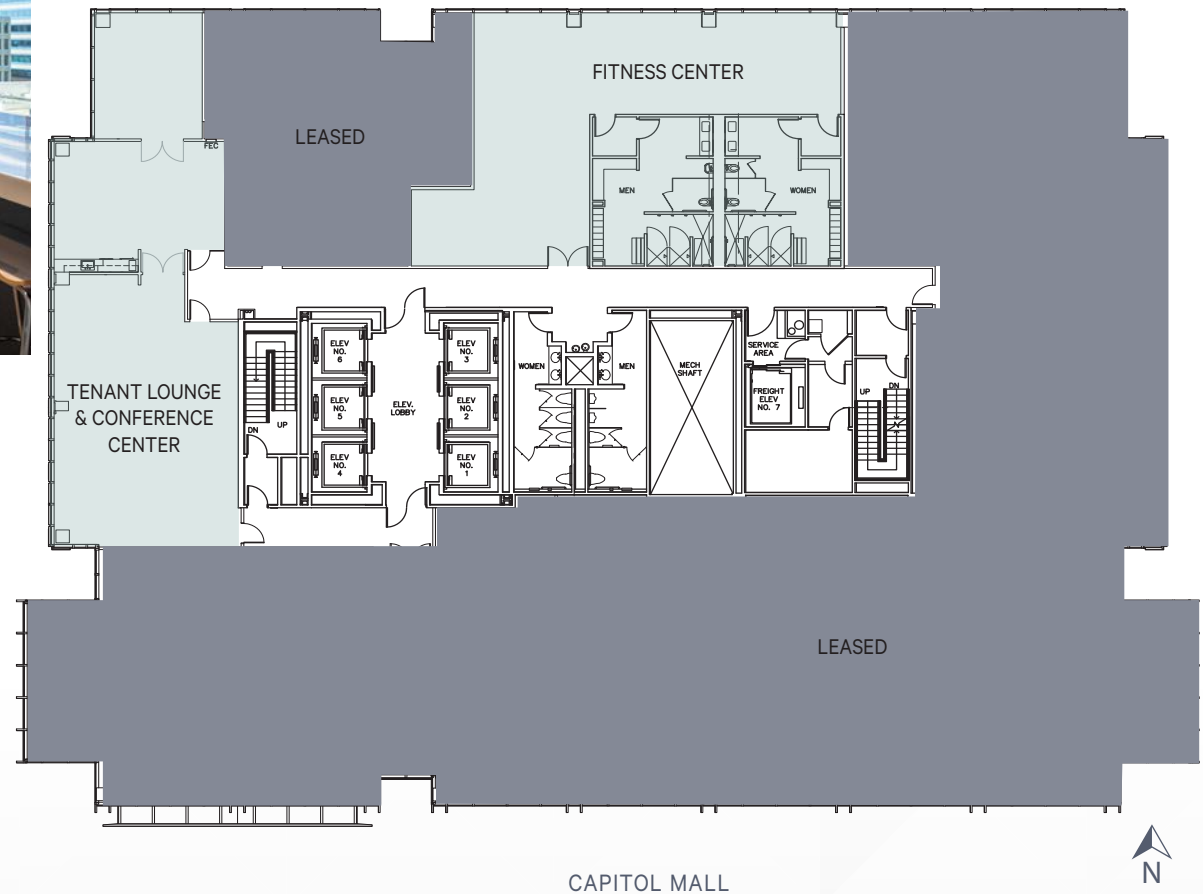
*Class A building on Capitol Mall,
standing out from the best.*

FLOOR	SUITE	RSF	
10TH	1000 *	±20,819-62,427	
11TH	1100 *	±20,819-62,427	
12TH	1200 *	±20,819-62,427	
14TH	1400	±7,099	MOVE-IN READY
15TH	1575	±1,014	MOVE-IN READY
20TH	2050	±2,160-5,294	MOVE-IN READY
20TH	2075 *	±1,358	Available 3/1/2026
22ND	2200	±20,819	

*Please contact listing agents for availability.

9TH FLOOR

FITNESS CENTER AND TENANT LOUNGE



Fitness Center Virtual Tour



Conference Center Virtual Tour



ON-SITE BUILDING AMENITIES





10TH FLOOR

SUITE 1000: ±20,819 RSF

**CAN BE COMBINED FOR ±62,427 RSF*

WITH SUITES 1100 & 1200

SUITE 1000
±20,819 RSF



NOTE: Please contact listing agents for availability.

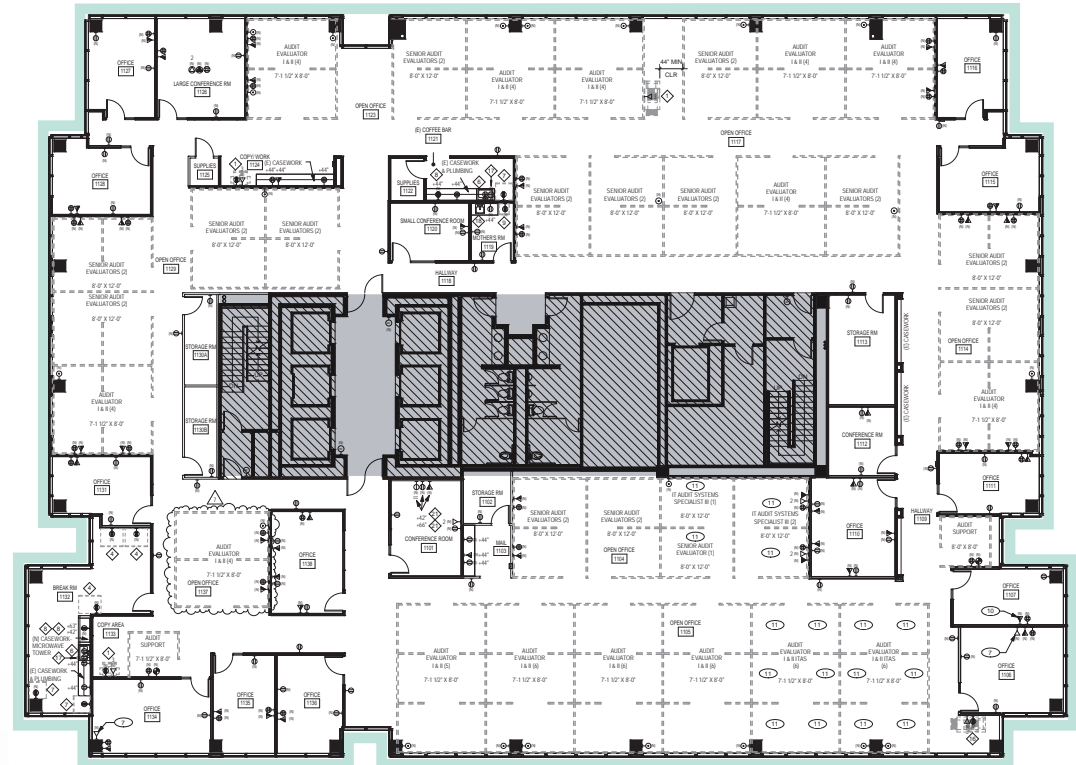


Lobby Abstract Art Installation



11TH FLOOR

SUITE 1100: ±20,819 RSF

CAN BE COMBINED FOR ±62,427 RSFWITH SUITES 1000 & 1200*SUITE 1100
±20,819 RSF

NOTE: Please contact listing agents for availability.



Lobby Abstract Art Installation



12TH FLOOR

**CAN BE COMBINED FOR ±62,427 RSF*

WITH SUITES 1000 & 1100

The floor plan of the 10th floor is a detailed architectural drawing showing the layout of various rooms and areas. The plan is oriented with North at the top. A large central area, including a staircase and several rooms, is shaded with diagonal lines, indicating a restricted zone. The plan is labeled with room numbers and names, and includes a legend for symbols like doors, windows, and furniture.

Rooms and Areas:

- OFFICE 1001, 1002, 1003, 1004, 1005, 1006, 1007, 1008, 1009, 1010, 1011, 1012, 1013, 1014, 1015, 1016, 1017, 1018, 1019, 1020, 1021, 1022, 1023, 1024, 1025, 1026, 1027, 1028, 1029, 1030, 1031, 1032, 1033, 1034, 1035, 1036, 1037, 1038, 1039, 1040, 1041, 1042, 1043, 1044, 1045, 1046, 1047, 1048, 1049, 1050, 1051, 1052, 1053, 1054, 1055, 1056, 1057, 1058, 1059, 1060, 1061, 1062, 1063, 1064, 1065, 1066, 1067, 1068, 1069, 1070, 1071, 1072, 1073, 1074, 1075, 1076, 1077, 1078, 1079, 1080, 1081, 1082, 1083, 1084, 1085, 1086, 1087, 1088, 1089, 1090, 1091, 1092, 1093, 1094, 1095, 1096, 1097, 1098, 1099, 1100, 1101, 1102, 1103, 1104, 1105, 1106, 1107, 1108, 1109, 1110, 1111, 1112, 1113, 1114, 1115, 1116, 1117, 1118, 1119, 1120, 1121, 1122, 1123, 1124, 1125, 1126, 1127, 1128, 1129, 1130, 1131, 1132, 1133, 1134, 1135, 1136, 1137, 1138, 1139, 1140, 1141, 1142, 1143, 1144, 1145, 1146, 1147, 1148, 1149, 1150, 1151, 1152, 1153, 1154, 1155, 1156, 1157, 1158, 1159, 1160, 1161, 1162, 1163, 1164, 1165, 1166, 1167, 1168, 1169, 1170, 1171, 1172, 1173, 1174, 1175, 1176, 1177, 1178, 1179, 1180, 1181, 1182, 1183, 1184, 1185, 1186, 1187, 1188, 1189, 1190, 1191, 1192, 1193, 1194, 1195, 1196, 1197, 1198, 1199, 1200, 1201, 1202, 1203, 1204, 1205, 1206, 1207, 1208, 1209, 1210, 1211, 1212, 1213, 1214, 1215, 1216, 1217, 1218, 1219, 1220, 1221, 1222, 1223, 1224, 1225, 1226, 1227, 1228, 1229, 1230, 1231, 1232, 1233, 1234, 1235, 1236, 1237, 1238, 1239, 1240, 1241, 1242, 1243, 1244, 1245, 1246, 1247, 1248, 1249, 1250, 1251, 1252, 1253, 1254, 1255, 1256, 1257, 1258, 1259, 1260, 1261, 1262, 1263, 1264, 1265, 1266, 1267, 1268, 1269, 1270, 1271, 1272, 1273, 1274, 1275, 1276, 1277, 1278, 1279, 1280, 1281, 1282, 1283, 1284, 1285, 1286, 1287, 1288, 1289, 1290, 1291, 1292, 1293, 1294, 1295, 1296, 1297, 1298, 1299, 1300, 1301, 1302, 1303, 1304, 1305, 1306, 1307, 1308, 1309, 1310, 1311, 1312, 1313, 1314, 1315, 1316, 1317, 1318, 1319, 1320, 1321, 1322, 1323, 1324, 1325, 1326, 1327, 1328, 1329, 1330, 1331, 1332, 1333, 1334, 1335, 1336, 1337, 1338, 1339, 1340, 1341, 1342, 1343, 1344, 1345, 1346, 1347, 1348, 1349, 1350, 1351, 1352, 1353, 1354, 1355, 1356, 1357, 1358, 1359, 1360, 1361, 1362, 1363, 1364, 1365, 1366, 1367, 1368, 1369, 1370, 1371, 1372, 1373, 1374, 1375, 1376, 1377, 1378, 1379, 1380, 1381, 1382, 1383, 1384, 1385, 1386, 1387, 1388, 1389, 1390, 1391, 1392, 1393, 1394, 1395, 1396, 1397, 1398, 1399, 1400, 1401, 1402, 1403, 1404, 1405, 1406, 1407, 1408, 1409, 1410, 1411, 1412, 1413, 1414, 1415, 1416, 1417, 1418, 1419, 1420, 1421, 1422, 1423, 1424, 1425, 1426, 1427, 1428, 1429, 1430, 1431, 1432, 1433, 1434, 1435, 1436, 1437, 1438, 1439, 1440, 1441, 1442, 1443, 1444, 1445, 1446, 1447, 1448, 1449, 1450, 1451, 1452, 1453, 1454, 1455, 1456, 1457, 1458, 1459, 1460, 1461, 1462, 1463, 1464, 1465, 1466, 1467, 1468, 1469, 1470, 1471, 1472, 1473, 1474, 1475, 1476, 1477, 1478, 1479, 1480, 1481, 1482, 1483, 1484, 1485, 1486, 1487, 1488, 1489, 1490, 1491, 1492, 1493, 1494, 1495, 1496, 1497, 1498, 1499, 1500, 1501, 1502, 1503, 1504, 1505, 1506, 1507, 1508, 1509, 1510, 1511, 1512, 1513, 1514, 1515, 1516, 1517, 1518, 1519, 1520, 1521, 1522, 1523, 1524, 1525, 1526, 1527, 1528, 1529, 1530, 1531, 1532, 1533, 1534, 1535, 1536, 1537, 1538, 1539, 1540, 1541, 1542, 1543, 1544, 1545, 1546, 1547, 1548, 1549, 1550, 1551, 1552, 1553, 1554, 1555, 1556, 1557, 1558, 1559, 1560, 1561, 1562, 1563, 1564, 1565, 1566, 1567, 1568, 1569, 1570, 1571, 1572, 1573, 1574, 1575, 1576, 1577, 1578, 1579, 1580, 1581, 1582, 1583, 1584, 1585, 1586, 1587, 1588, 1589, 1590, 1591, 1592, 1593, 1594, 1595, 1596, 1597, 1598, 1599, 1600, 1601, 1602, 1603, 1604, 1605, 1606, 1607, 1608, 1609, 1610, 1611, 1612, 1613, 1614, 1615, 1616, 1617, 1618, 1619, 1620, 1621, 1622, 1623, 1624, 1625, 1626, 1627, 1628, 1629, 1630, 1631, 1632, 1633, 1634, 1635, 1636, 1637, 1638, 1639, 1640, 1641, 1642, 1643, 1644, 1645, 1646, 1647, 1648, 1649, 1

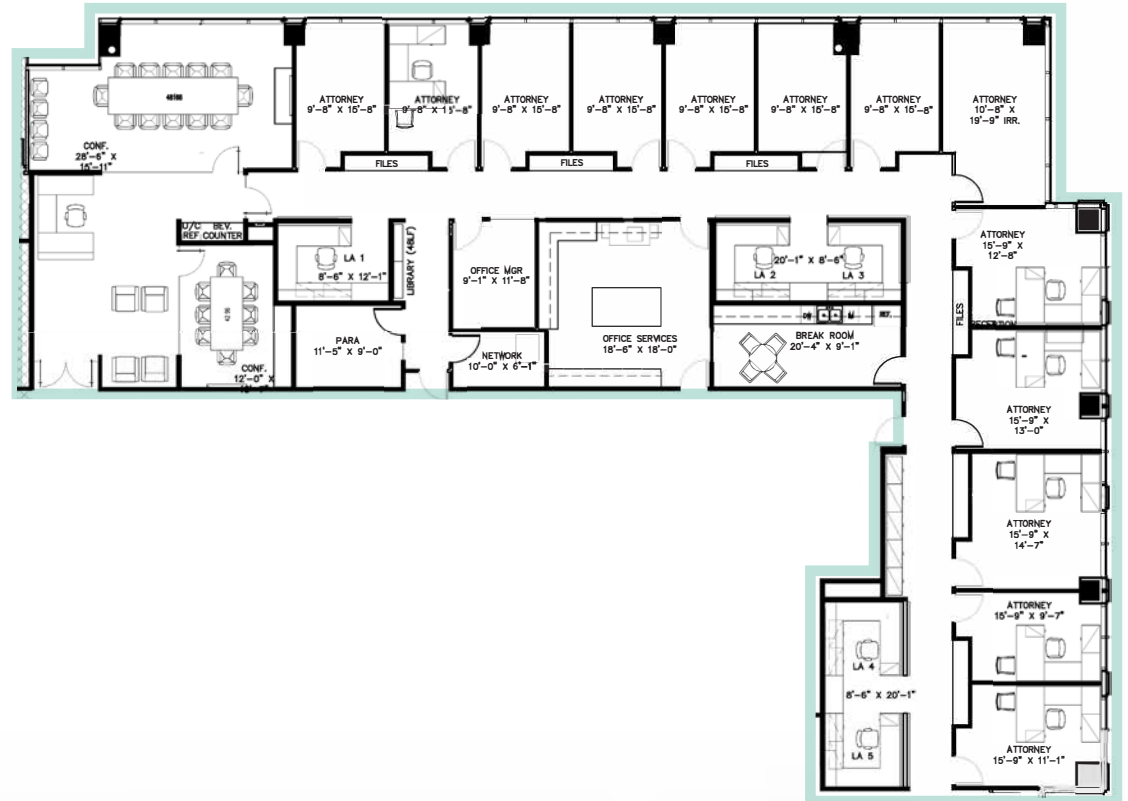




14TH FLOOR

SUITE 1400: ±7,099 RSF

SUITE 1400
±7,099 RSF



Lobby Abstract Art Installation



15TH FLOOR

SUITE 1575: ±1,014 RSF

SUITE 1575
±1,014 RSF



Lobby Abstract Art Installation



Lobby Abstract Art Installation

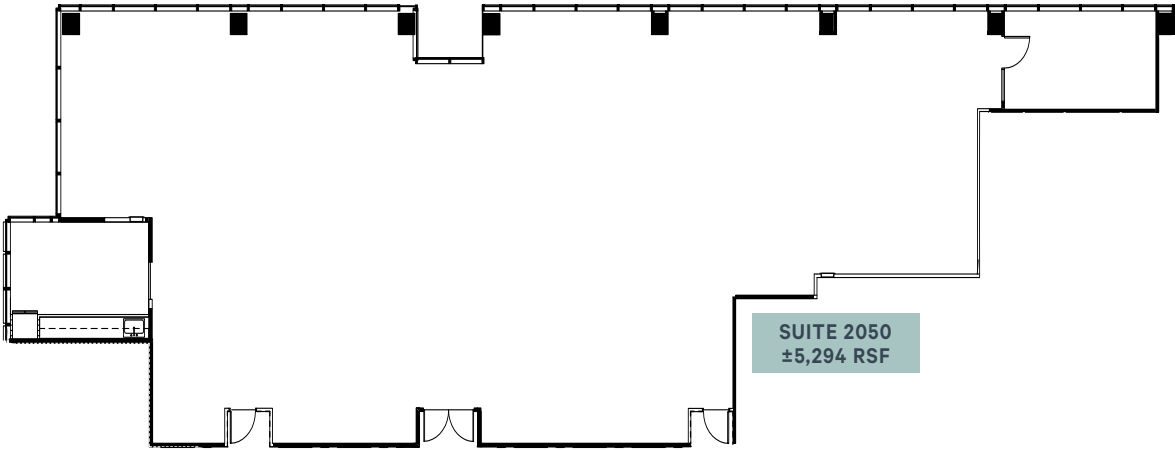
BUILDING FLOOR PLAN

20TH FLOOR

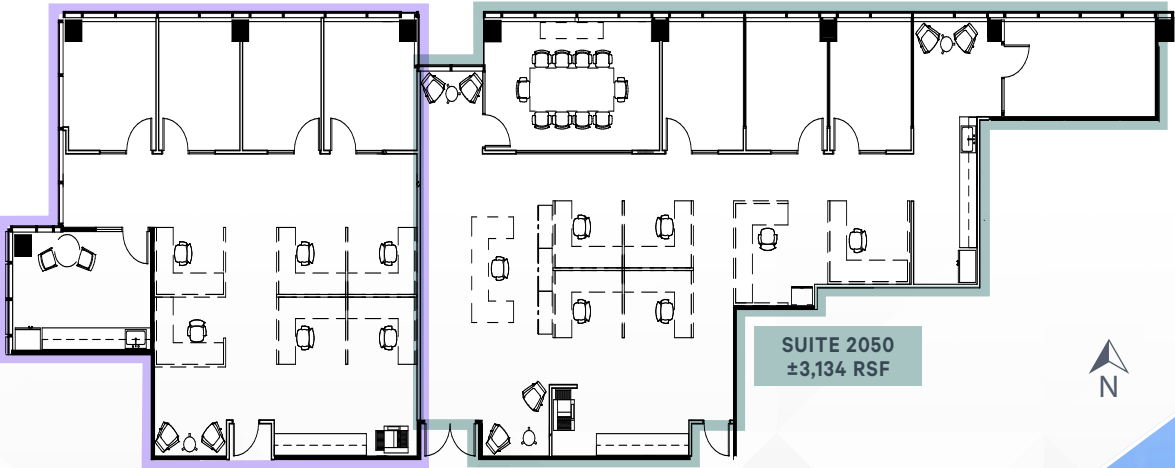
SUITE 2050: $\pm 2,160$ - $5,294$ RSF

MOVE-IN READY

AS-BUILT PLAN



PROSPECTIVE PLAN - OPTION 1



SUITE 2050
 $\pm 2,160$ RSF



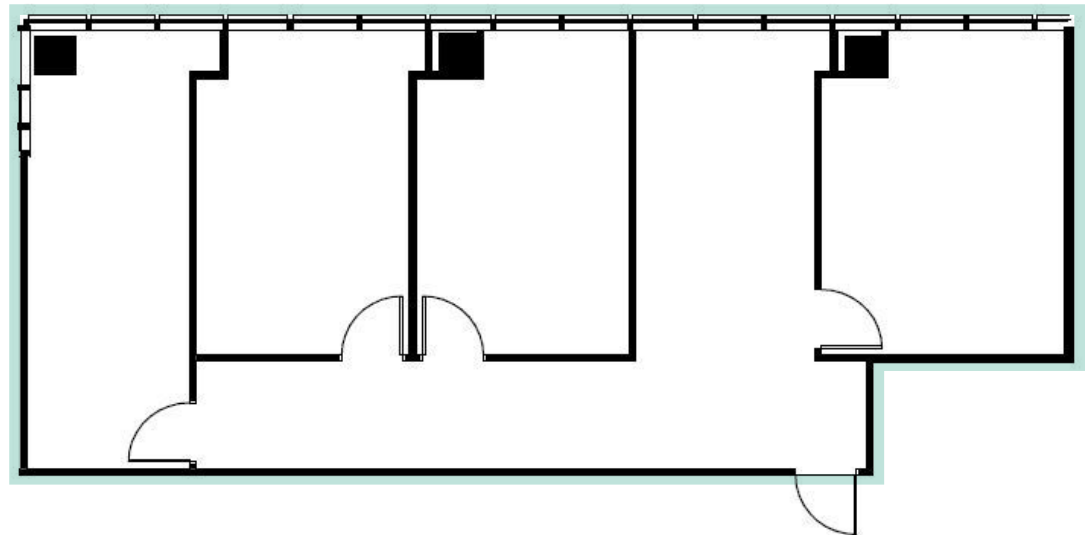


20TH FLOOR

SUITE 2075: $\pm 1,358$ RSF

AVAILABLE 3/1/2026

SUITE 2075
 $\pm 1,358$ RSF



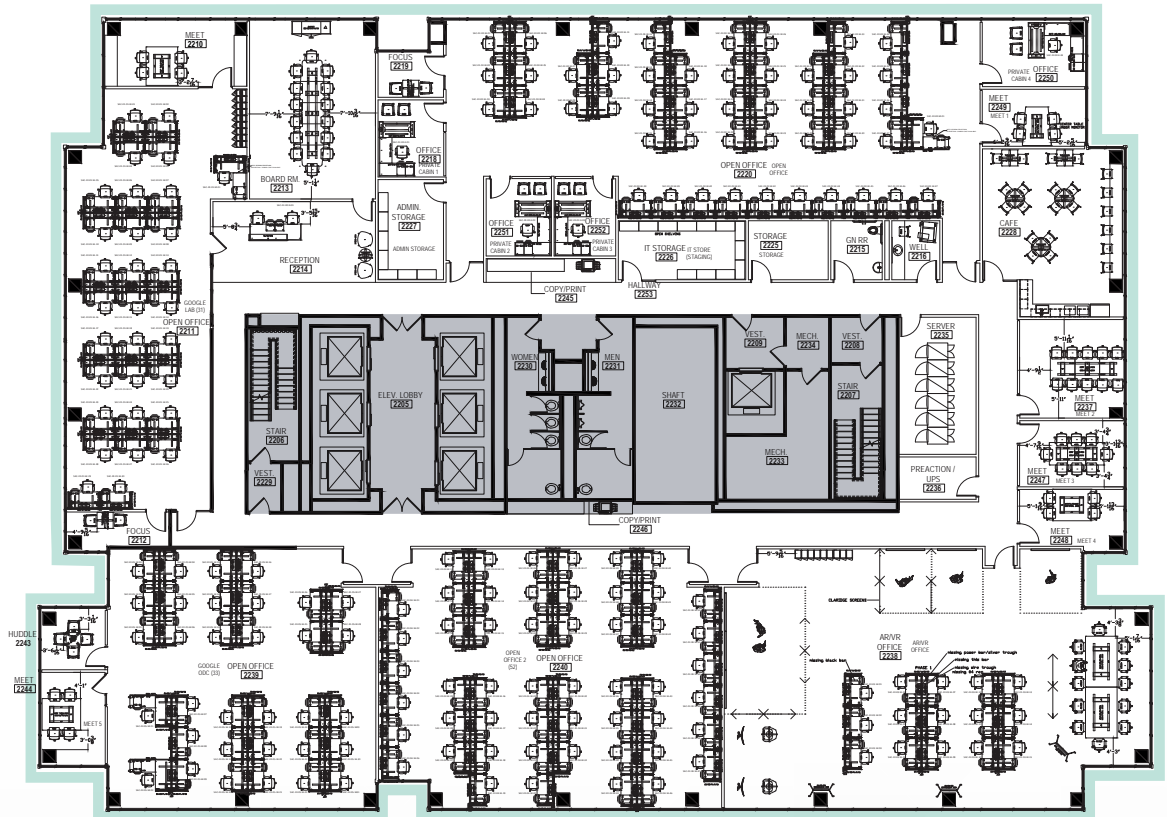
Lobby Abstract Art Installation



22TH FLOOR

SUITE 2200: ±20,819 RSF

SUITE 2200
±20,819 RSF



NOTE: Please contact listing agents for availability.



Lobby Abstract Art Installation



BUILDING AVAILABILITY

22ND FLOOR: ±20,819 RSF

20TH FLOOR: ±1,358-6,652 RSF

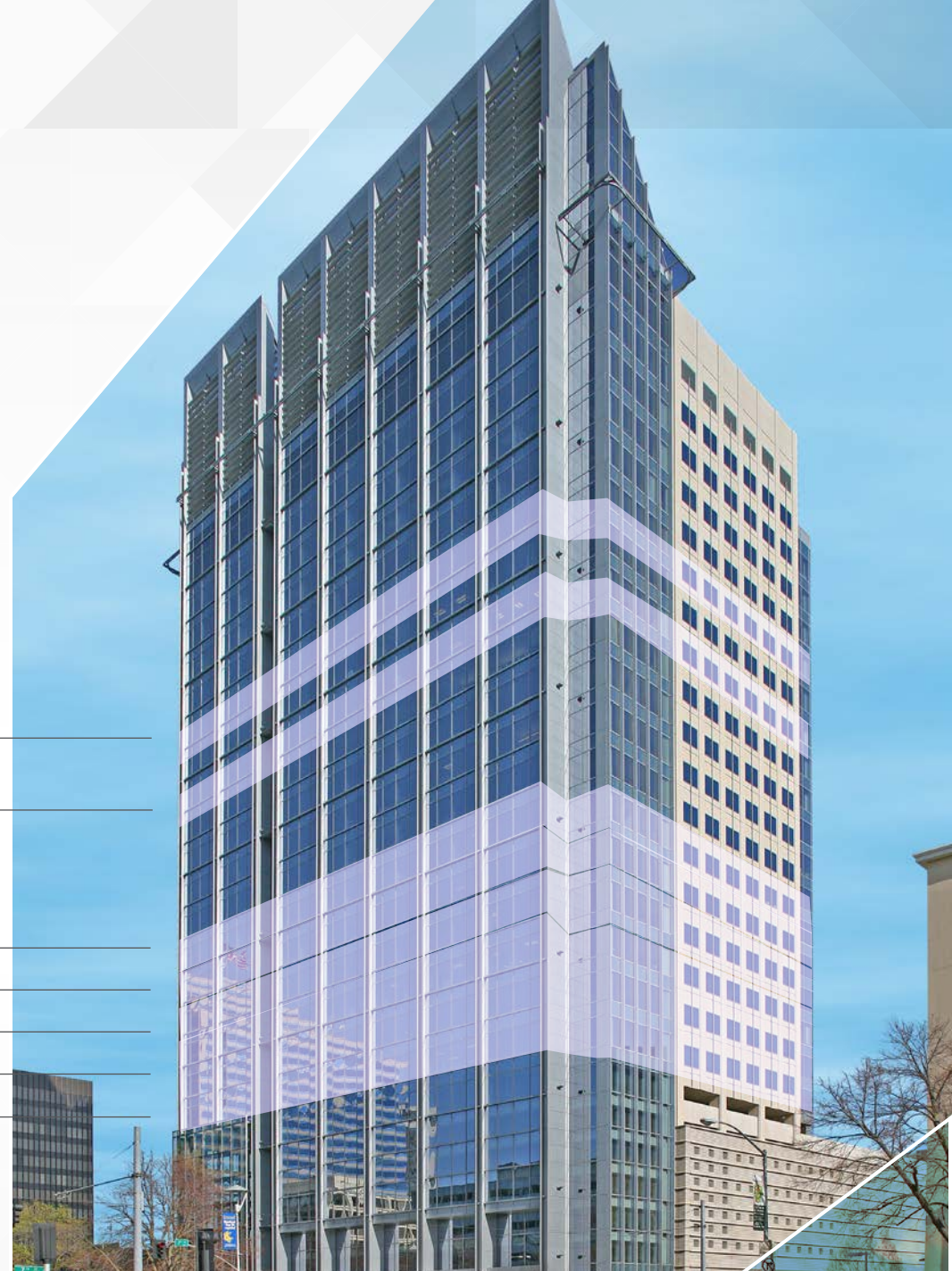
15TH FLOOR: ±1,014 RSF

14TH FLOOR: ±7,099 RSF

12TH FLOOR: ±20,819 RSF

11TH FLOOR: ±20,819 RSF

10TH FLOOR: ±20,819 RSF







621 CAPITOL MALL

Exclusive Listing Agent

CBRE



Tony Whittaker

Senior Vice President

T +1 916 492 6914

tony.whittaker@cbre.com

Lic. 01780828

Jason Goff

Executive Vice President

T +1 916 446 8222

jason.goff@cbre.com

Lic. 01205230

Nellie Cruz

Vice President

T +1 916 492 6915

nellie.cruz@cbre.com

Lic. 02086140



View More on the Website

© 2025 CBRE, Inc. All rights reserved. This information has been obtained from sources believed reliable but has not been verified for accuracy or completeness. CBRE, Inc. makes no guarantee, representation or warranty and accepts no responsibility or liability as to the accuracy, completeness, or reliability of the information contained herein. You should conduct a careful, independent investigation of the property and verify all information. Any reliance on this information is solely at your own risk. CBRE and the CBRE logo are service marks of CBRE, Inc. All other marks displayed on this document are the property of their respective owners, and the use of such marks does not imply any affiliation with or endorsement of CBRE.

