



Proposed Infrastructure Improvements US421 and Old Liberty Road Randolph County, NC

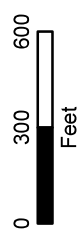
August 2022

Legend

- Septic Complaint
 - Proposed Pump Station
 - Proposed Manhole
 - Proposed Force Main
 - Proposed Sewer
 - Proposed Water Line
 - Existing Wastewater
 - Existing Water Main
 - US Route
 - Ramp
 - Street
 - Stream
 - ▭ Municipal Boundary
- Land Use
- Residential
 - Commercial
 - Industrial
 - Agricultural

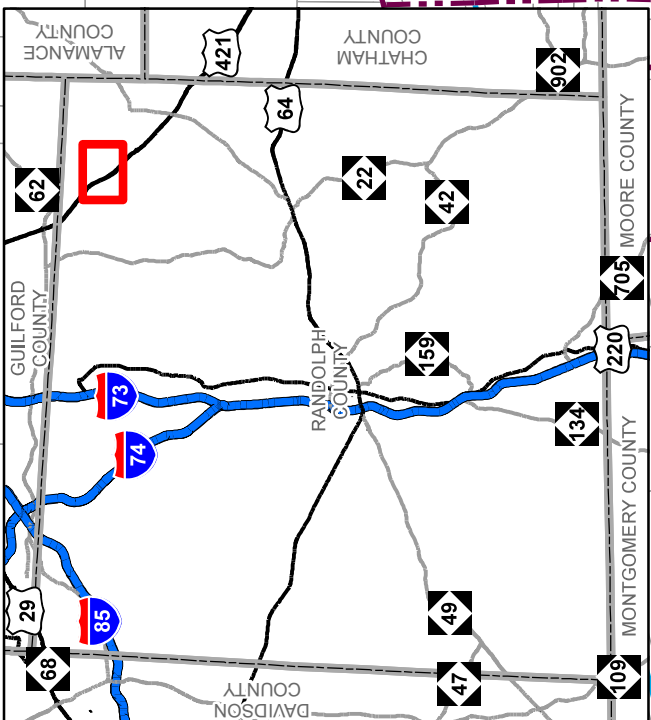
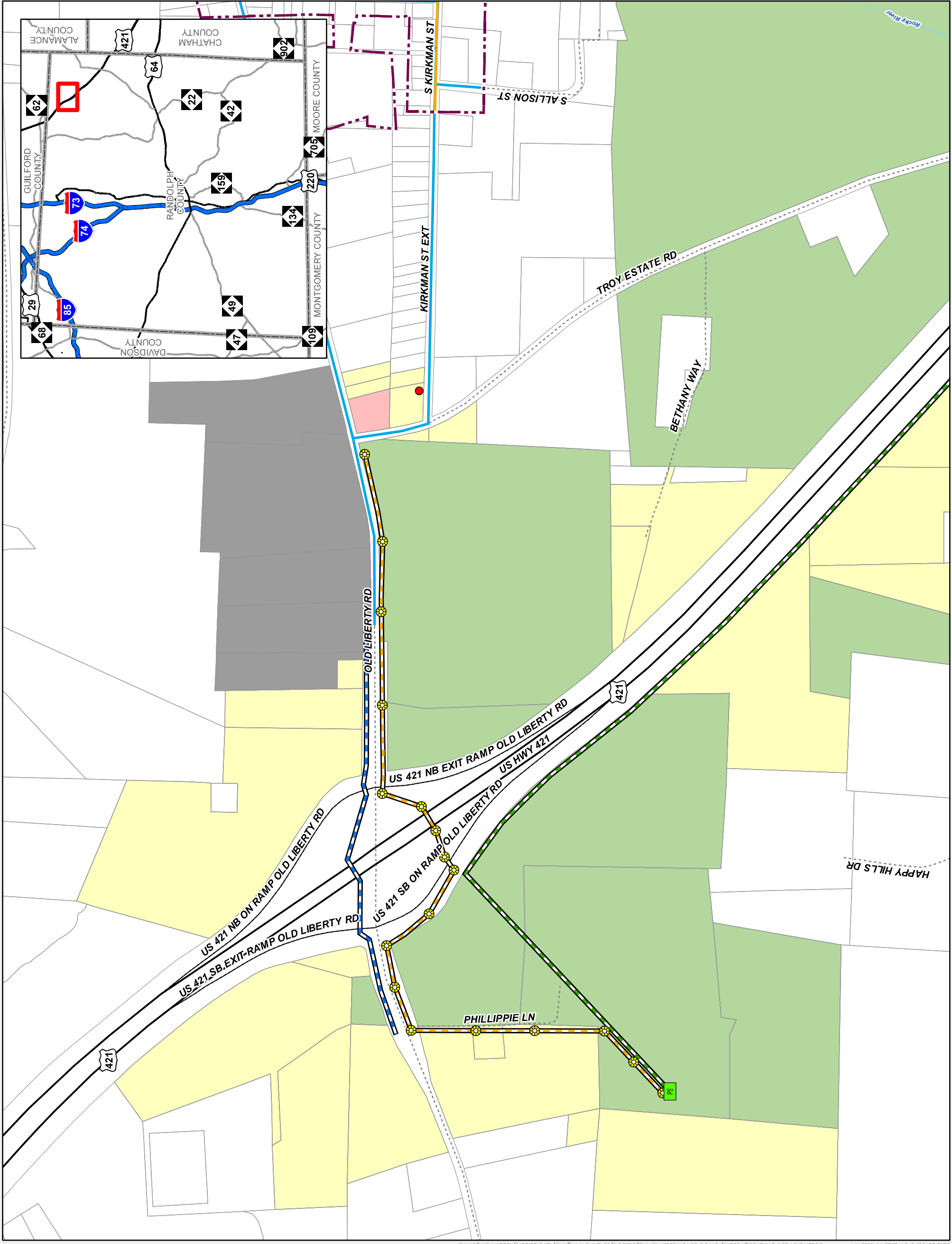


1 inch = 600 feet



Wooten

The Wooten Company makes every effort to produce and publish GIS maps using the most current and accurate information possible, however, the maps are strictly for planning purposes only. The maps are compiled from recorded deeds, plats, and other public and private records and data. Users of the maps are hereby notified that the aforementioned public primary information sources should be consulted for verification of the information on this map. The Wooten Company and its employees are not responsible for the consequences of any errors, omissions, or inaccuracies that may appear on this map. Please contact the GIS Group at (919) 628-0531 or ftohan@thewootencompany.com for data source information.





Proposed Infrastructure Improvements US421 and Old US421 Randolph County, NC

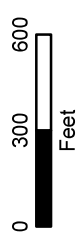
August 2022

Legend

- Septic Complaint
 - Proposed Pump Station
 - Proposed Manhole
 - Proposed Force Main
 - Proposed Sewer
 - Proposed Water Line
 - US Route
 - Ramp
 - Street
 - Stream
 - ▭ Municipal Boundary
- Land Use
- Residential
 - Commercial
 - Industrial
 - Agricultural

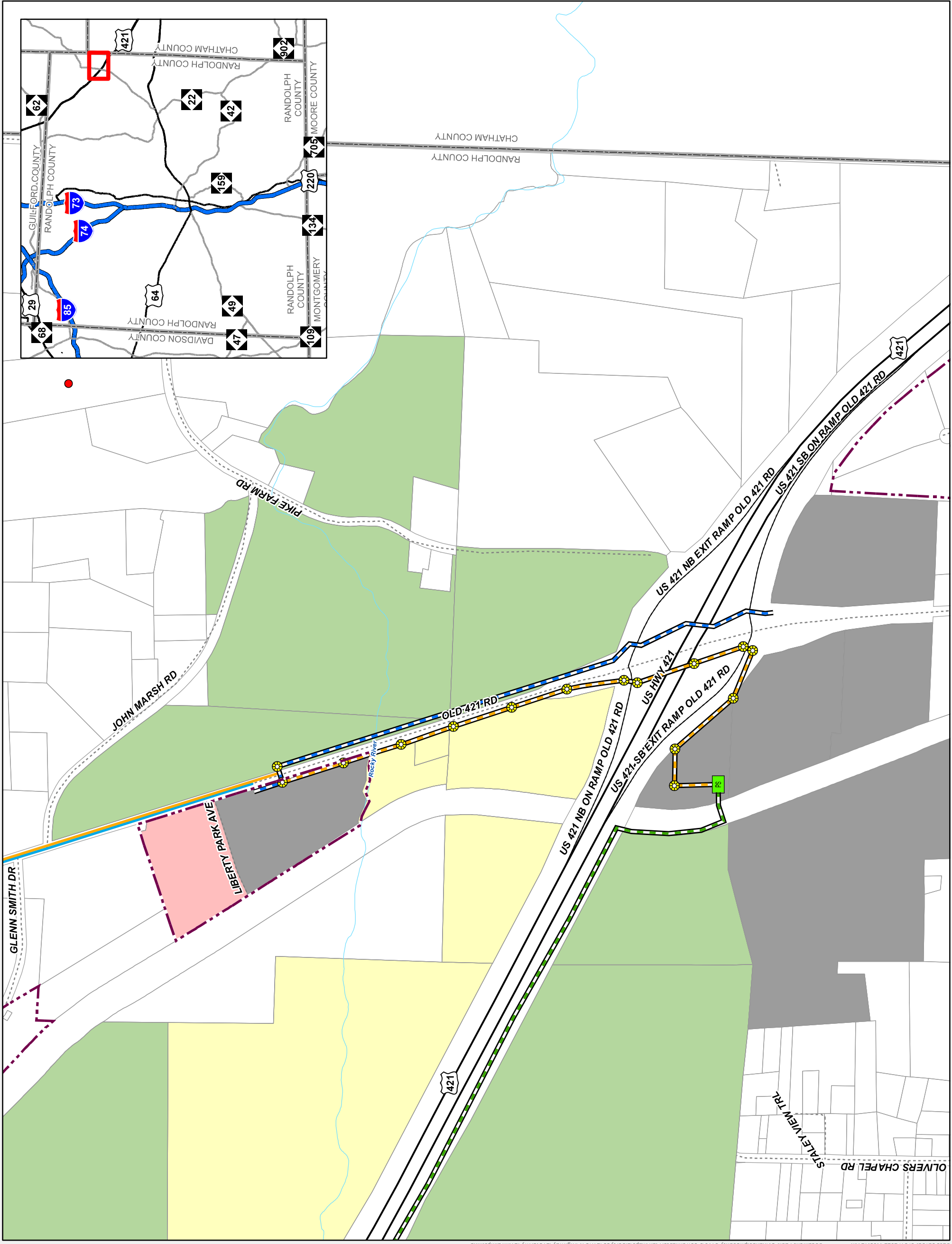
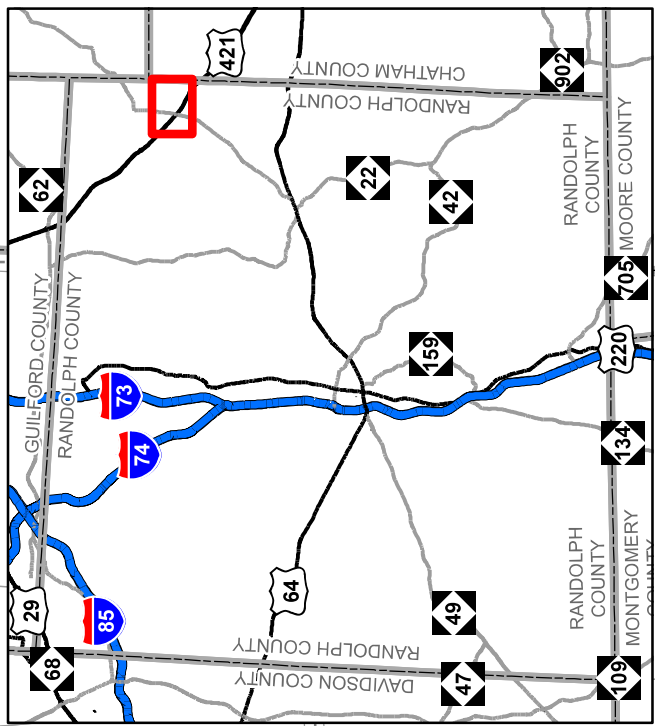


1 inch = 600 feet



Wooten

The Wooten Company makes every effort to produce and publish GIS maps using the most current and accurate information possible. However, the maps are strictly for planning purposes only. The maps are compiled from recorded deeds, plats, and other public and private records and data. Users of the maps are hereby notified that the aforementioned public primary information sources should be consulted for verification of the information on this map. The Wooten Company and its employees are not responsible for the accuracy of the information shown on this map and shall not be held liable for any errors or omissions. Please contact the GIS Group at (919) 628-0531 or ftohan@thehootencompany.com for data source information.





Proposed Infrastructure Improvements US421 and NC49 Randolph County, NC

August 2022

Legend

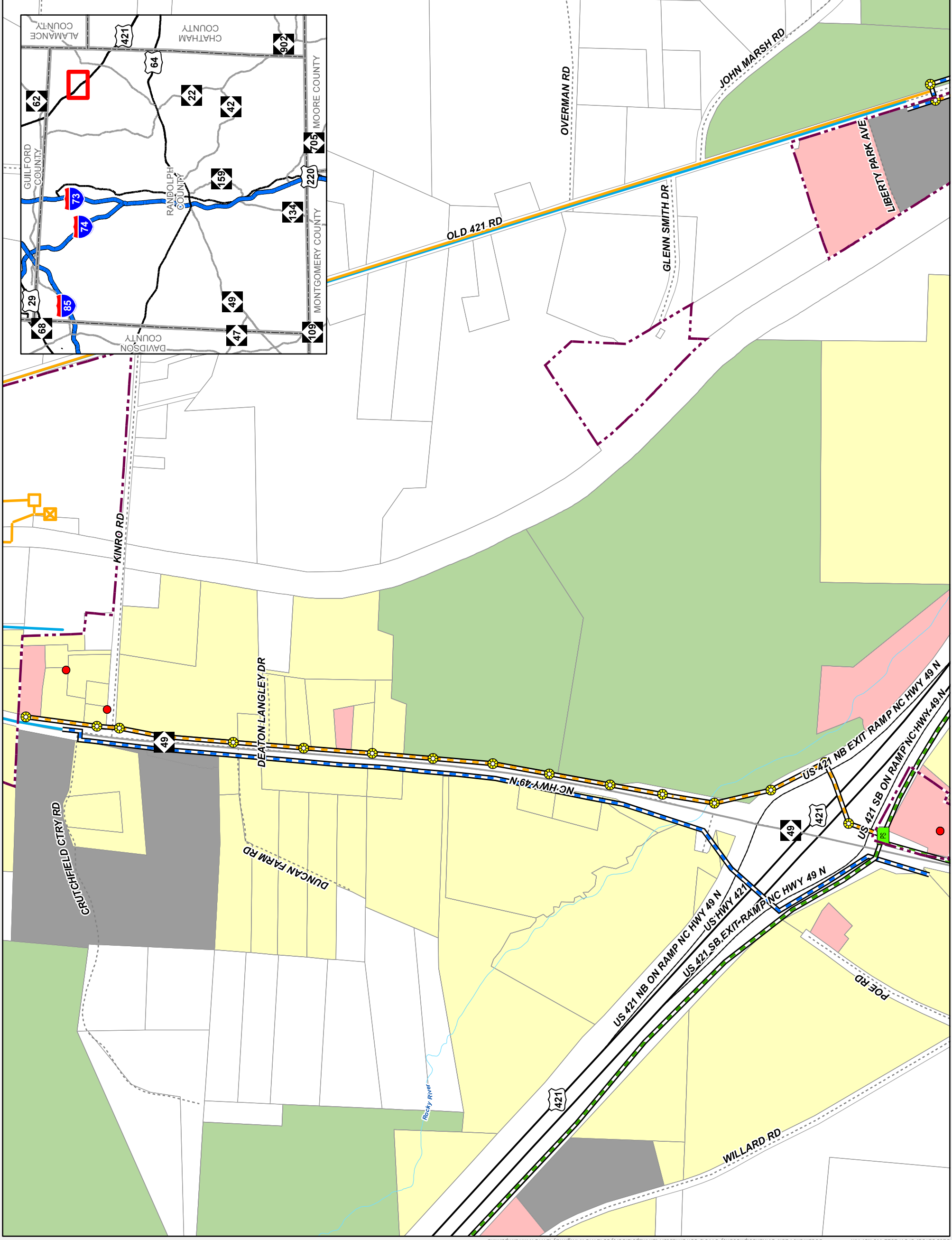
- Septic Complaint
 - Proposed Pump Station
 - Proposed Manhole
 - Proposed Force Main
 - Proposed Sewer
 - Proposed Water Line
 - Existing Wastewater
 - Existing Water Main
 - US Route
 - NC Route
 - Ramp
 - Street
 - Stream
 - ▭ Municipal Boundary
- Land Use
- Residential
 - Commercial
 - Industrial
 - Agricultural



1 inch = 600 feet
0 300 600
Feet



The Wooten Company makes every effort to produce and publish GIS maps using the most current and accurate information possible, however, the maps are strictly for planning purposes only. The maps are compiled from recorded deeds, plats, and other public and private records and data. Users of the maps are hereby notified that the aforementioned public primary information sources should be consulted for verification of the information on this map. The Wooten Company and its employees are not responsible for the use of the information on this map for any purpose other than that intended. Please contact the Wooten Company at (819) 628-0531 or ftohan@thewootencompany.com for data source information.





Proposed Infrastructure Improvements US 421 and NC 49 PS to PS 1 Randolph County, NC

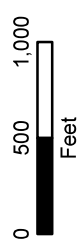
August 2022

Legend

- Septic Complaint
 - Proposed Pump Station
 - Proposed Force Main
 - Proposed Water Line
 - Proposed Gravity
 - Existing Wastewater
 - US Route
 - NC Route
 - Ramp
 - Street
 - Stream
 - Lake
 - Municipal Boundary
- Land Use**
- Residential
 - Agricultural



1 inch = 1,000 feet



The Wooten Company makes every effort to produce and publish GIS maps using the most current and accurate information possible. However, the maps are strictly for planning purposes only. The maps are compiled from recorded deeds, plats, and other public and private records and data. Users of the maps are hereby notified that the aforementioned public primary information sources should be consulted for verification of the information on this map. The Wooten Company and its employees are not responsible for the use of the information on these maps for any purpose not intended by the Wooten Company. Please contact the Wooten Company at (919) 628-0531 or foohan@wootencompany.com for data source information.

