



First Western Properties | 425.822.5522  
11621 97th Lane NE Kirkland, WA 98034 | fwp-inc.com

3922 148TH STREET SE | MILL CREEK, WA

# ESPLANADE AT MILL CREEK

## RETAIL SPACE FOR LEASE

# SITE SUMMARY



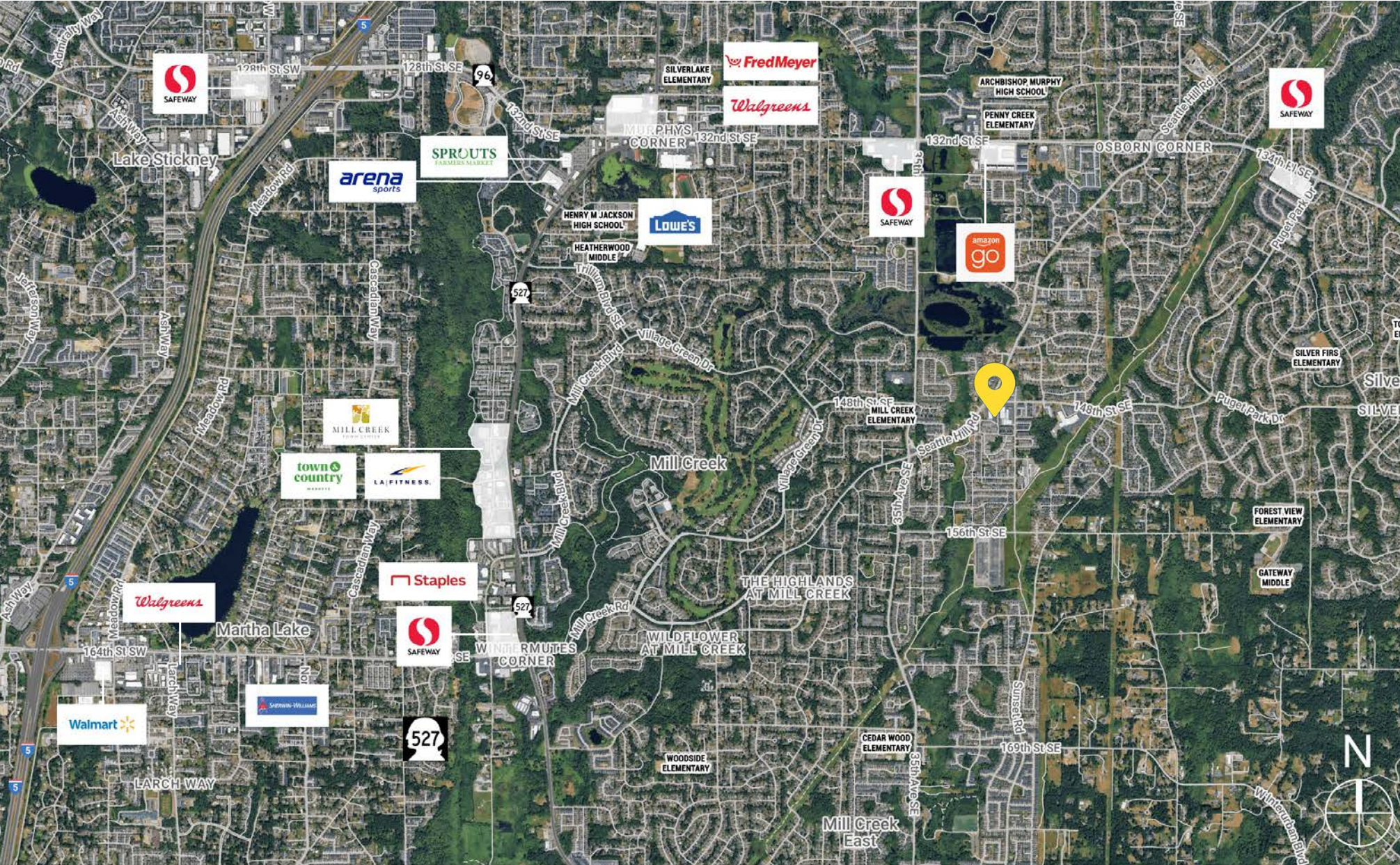
Located in the heart of one of Puget Sound's most affluent cities. The site has excellent visibility along Seattle Hill Road the major NE/SW connector for SR 96 and SR 527. The Everett Clinic will be coming available which presents an excellent opportunity for some rare larger square footage in the area.

Available Now	945 SF   \$21.00 PSF, NNN
Coming Available	Former Everett Clinic   6,622 SF   \$30.00 PSF, NNN
Signage	Pylon Signage Available
Total Parking on Site	144 Stalls

# SITE PLAN

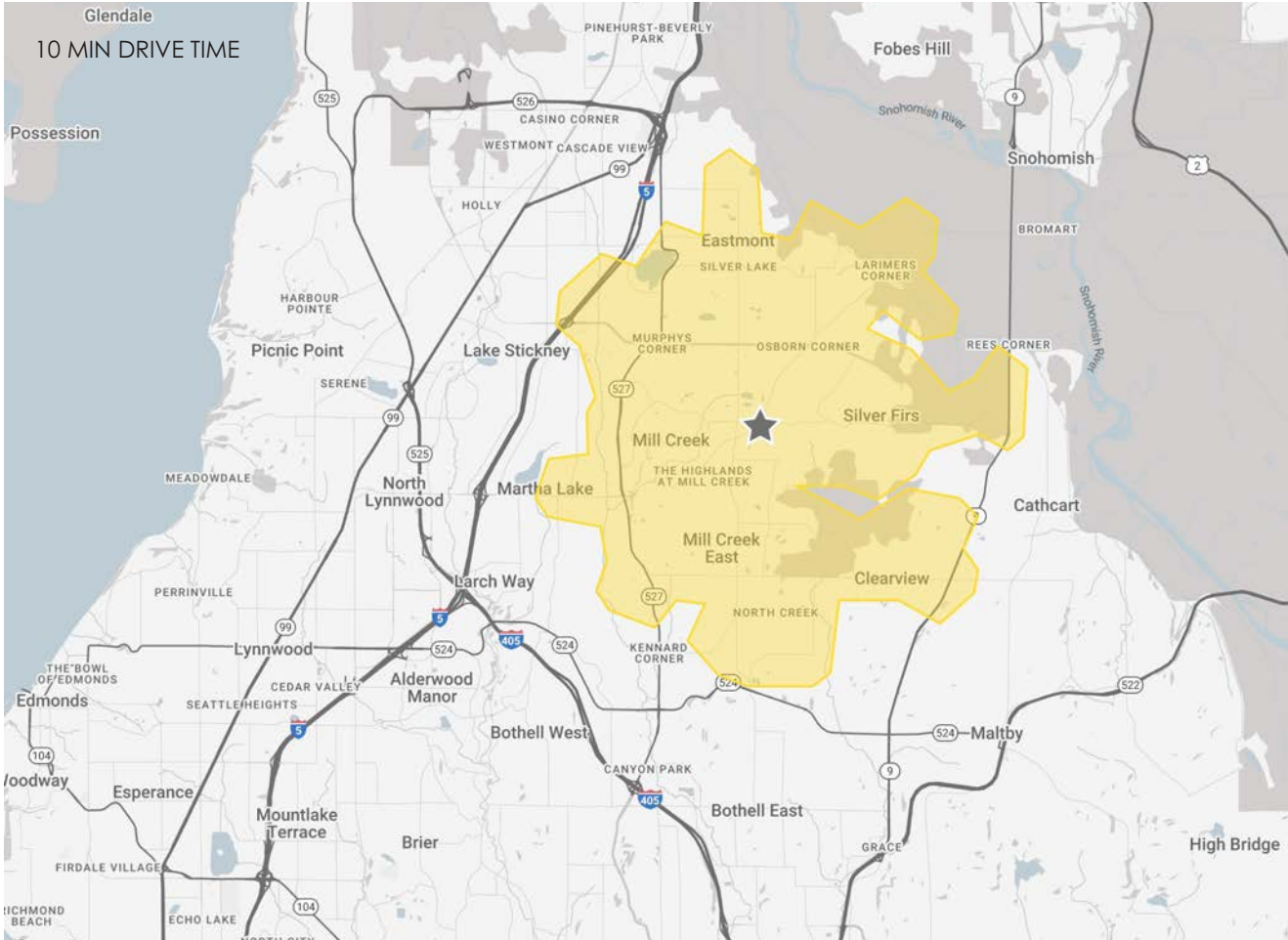


# LOCATION AERIAL



# DEMOGRAPHICS

Mill Creek, Washington, is a highly desirable community in Snohomish County, balancing natural beauty and an active lifestyle with a robust local economy. This safe and friendly city boasts 10 attractive parks and over 23 miles of nature trails, providing abundant recreational opportunities for its roughly 20,800 residents. Beyond its green spaces, Mill Creek fosters a thriving business environment. While known for its popular Town Center, the city's economic landscape extends to a diverse range of businesses, including retail, healthcare, and professional services. The city actively supports business growth and retention, making Mill Creek an exceptional place where neighborhoods flourish and businesses thrive.



106,989

POPULATION  
10 MIN DT



38,365

NO OF HOUSEHOLDS  
10 MIN DT



\$185,785

AVERAGE HH INCOME  
10 MIN DT



\$795,390

MEDIAN PROPERTY VALUE  
10 MIN DT



37.3

YEARS OLD  
MEDIAN AGE



\$2.93B

TOTAL NON-RETAIL  
EXPENDITURE



43,814

DAYTIME ADJ. POPULATION  
10 MIN DT



12,471

SEATTLE HILL ROAD  
ADT AT SITE



RELATIONSHIP FOCUSED. RESULTS DRIVEN.

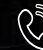
KIRKLAND | TACOMA | PORTLAND | SEATTLE


**JAKE THURBER**

 425.250.3277

 [jthurber@fwp-inc.com](mailto:jthurber@fwp-inc.com)

**CHANDLER WILLIAMS**

 206.518.1170

 [chandler@fwp-inc.com](mailto:chandler@fwp-inc.com)

First Western Properties | 425.822.5522 | 11621 97th Lane NE Kirkland, WA 98034 | [fwp-inc.com](http://fwp-inc.com)