

355 GREENWICH AVE

FOR LEASE



FULLY BUILT OUT RESTAURANT AVAILABLE

SPECIFICATIONS

- ▶ **Size:**
1,140 SF available + basement
- ▶ **Description:**
Fully built out restaurant in the heart of Greenwich Ave
- ▶ **On the Block:**
Apple, Restoration Hardware, Vuori, Richard's, Athleta, Ruby & Jenna, Todd Snyder, Ba&sh, Warby Parker, Athleta, Alice & Olivia, Aesop, Rodd & Gunn, Herman Miller, Benefit, Gregory's Coffee, and Starbucks
- ▶ **Frontage:**
16ft
- ▶ **Possession:**
Arranged

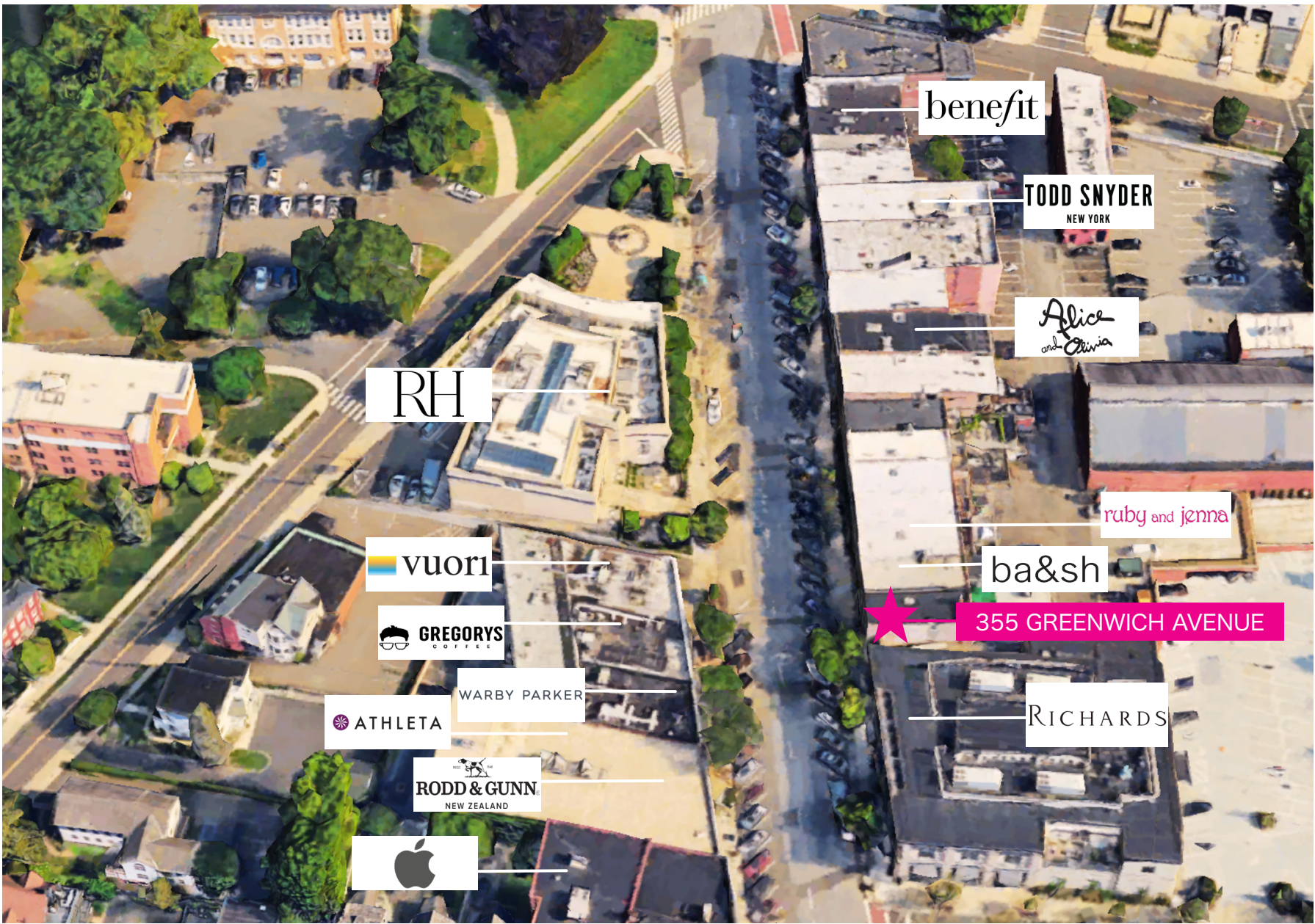
JOIN THESE EXCLUSIVE RETAILERS



This information has been secured from sources we believe to be reliable, but we make no representations as to the accuracy of the information. References to square footage are approximate. Buyer must verify the information and bears all risk for any inaccuracies.

355 GREENWICH AVE

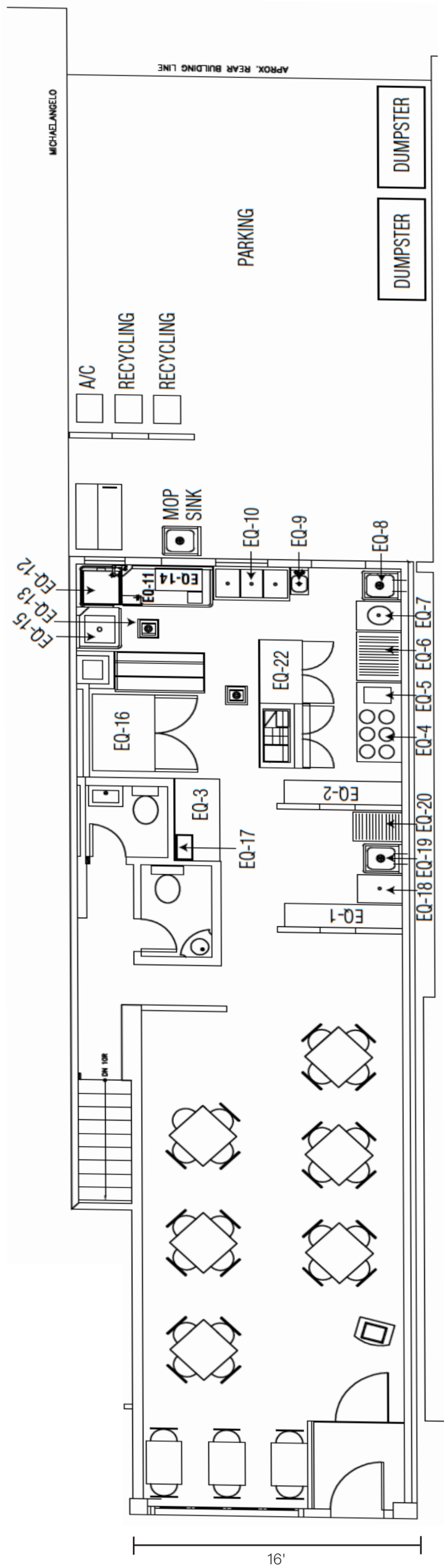
MARKET AERIAL



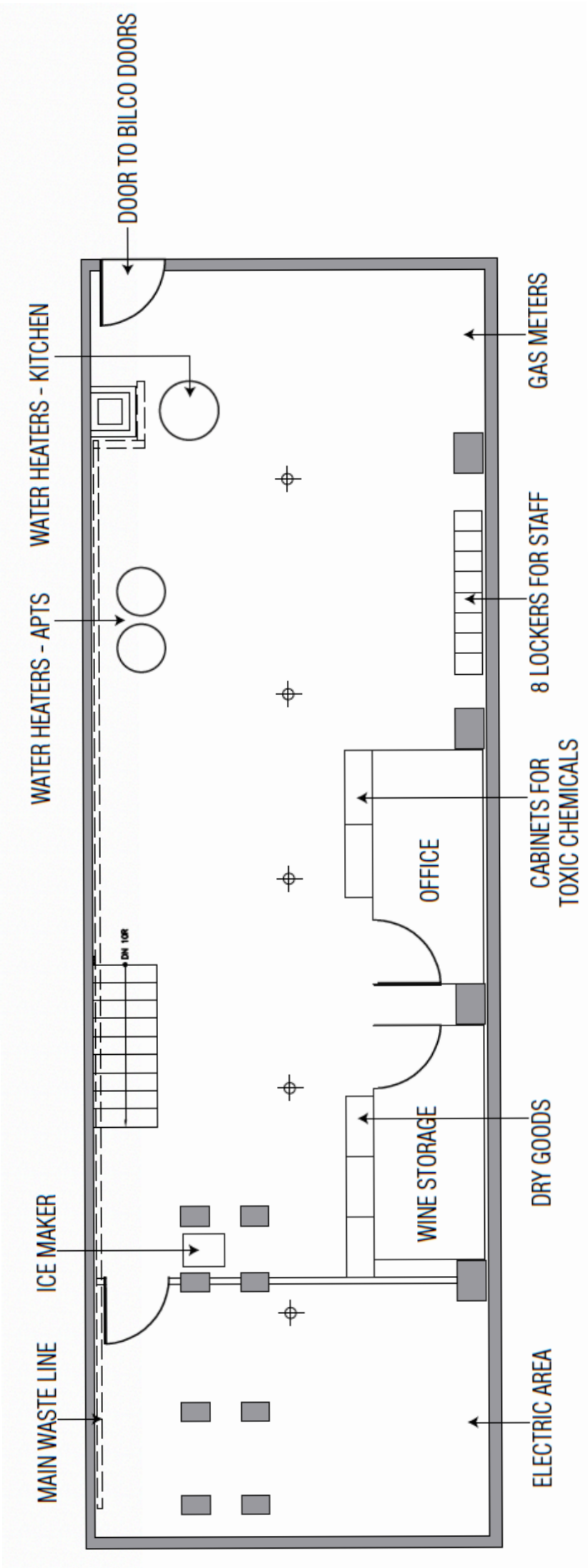
355 GREENWICH AVE

FLOOR PLANS

FIRST FLOOR PLAN



BASEMENT PLAN



355 GREENWICH AVE

INTERIOR PHOTOS



This information has been secured from sources we believe to be reliable, but we make no representations as to the accuracy of the information. References to square footage are approximate. Buyer must verify the information and bears all risk for any inaccuracies.

CONTACT INFORMATION
Jason Gerbsman, Managing Principal
212-599-2900 / jg@hudsonre.com

355 GREENWICH AVE

INTERIOR PHOTOS



This information has been secured from sources we believe to be reliable, but we make no representations as to the accuracy of the information. References to square footage are approximate. Buyer must verify the information and bears all risk for any inaccuracies.

CONTACT INFORMATION
Jason Gerbsman, Managing Principal
212-599-2900 / jg@hudsonre.com