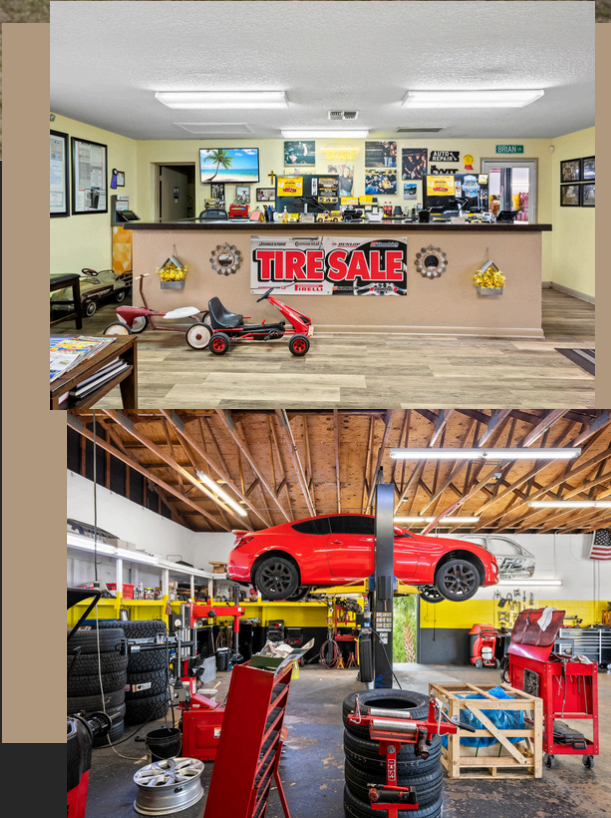


AUTOMOTIVE REPAIR AND TIRE SHOP FOR SALE

6241 RIDGE ROAD
PORT RICHEY FL

34668



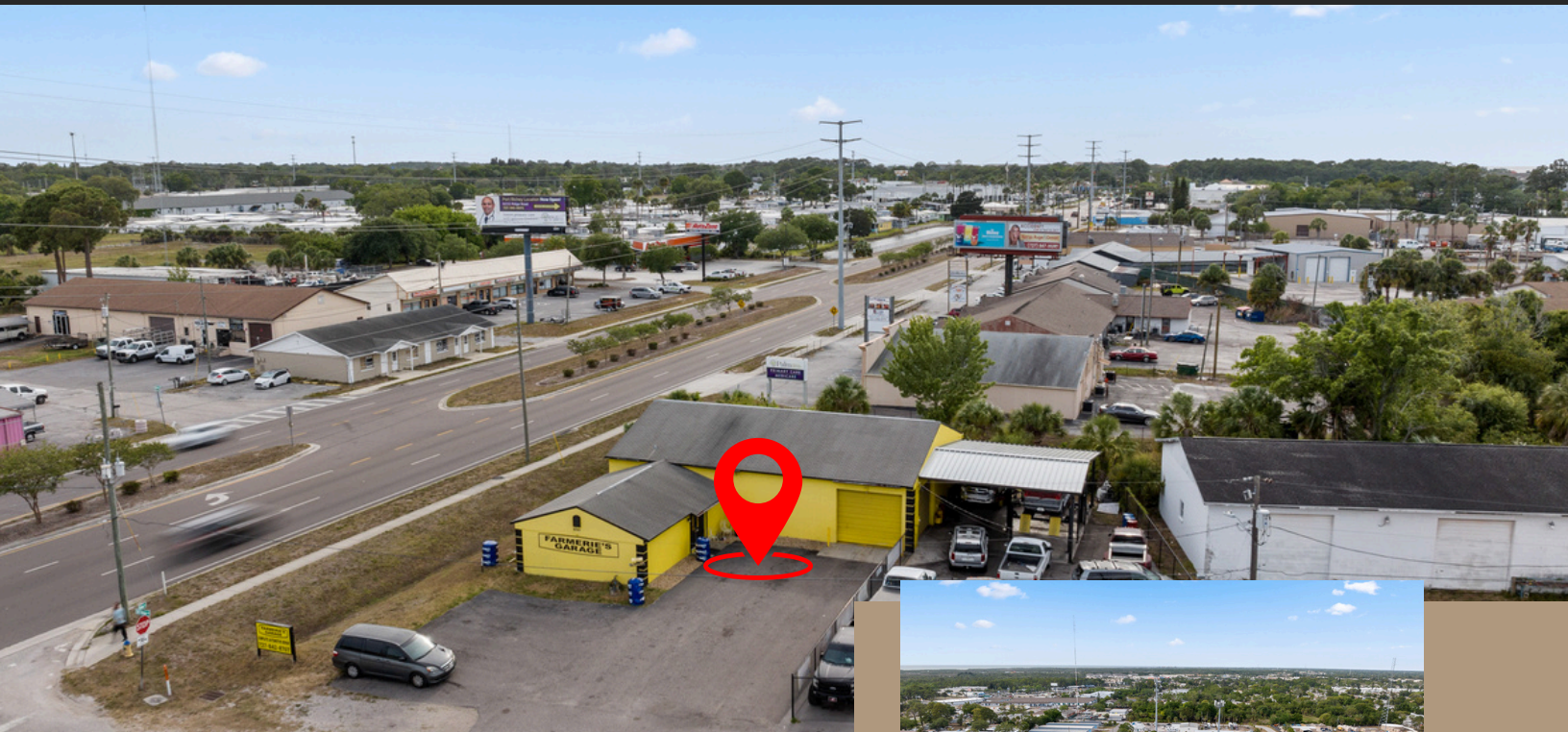
CONTACT: SEAN
KWIATKOWSKI PA

- 📞 352-544-7253
- ✉️ sean@theagentsk.com
- 🌐 People's Trust Realty

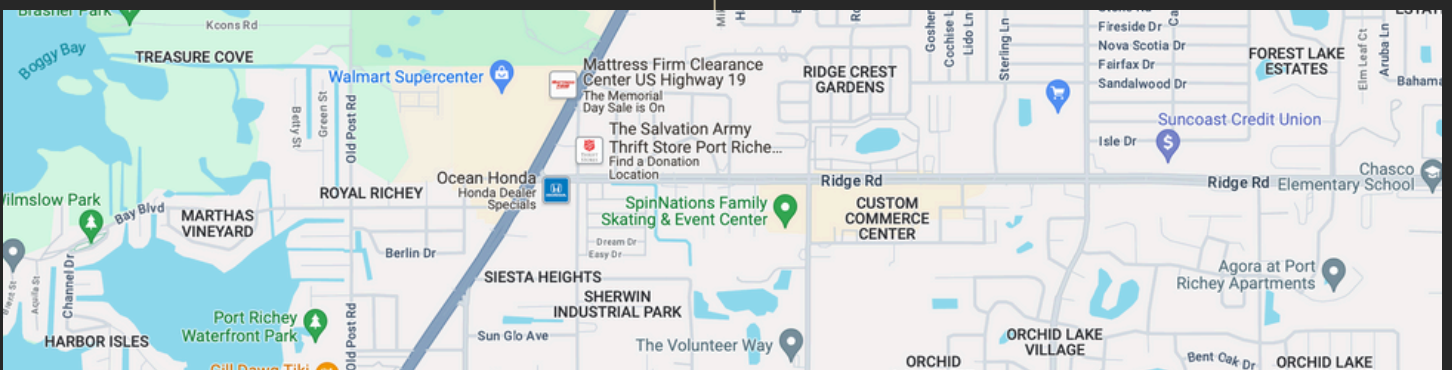
About the Property

Prime opportunity to own a fully operating turn key Automotive and Tire Shop in West Central Florida. Location Location Location this well maintained, stand alone shop is centrally located in Pasco County , situated on a well traveled road with visibility conveniently located just off of US Highway 19. Busy and Profitable with a loyal customer base, established fleet accounts and Intoxalock account Services include Engine and Transmission Rebuild, Tune Ups and Service Oil changes, brakes, and Tire Sales. Detailed list and prices will provide with a signed NDA. The shop is fully equipped with machinery and tools and includes tire machine and balancer, alignment equipment, and service computers to name a few. Detailed list will provided with the signed NDA. This 5-bay shop boasts parking in the front, as well as an additional parking in chain link secured lot, customer lobby, and private meeting room. Call today for your appointment to view.





LOCATION
PRIME, COVETED
LOCATION JUST OFF US
US 19 BOASTING AN
AADT OF 51,000!
RIDGE ROAD HAD AADT
OF 24,000 AND
GROWING SINCE THE
RIDGE ROAD EXTENSION
TO US 589.





ABOUT PASCO COUNTY

Pasco County is an inclusive and resilient place to live, work, and play. Our quality of life and economic vitality are rooted in the stewardship of our sense of community, cultural and natural resources.

608,794

POPULATION

1,467

BUSINESSES

1887

FOUNDED

868mi²

AREA

<https://www.pascocountyfl.net>

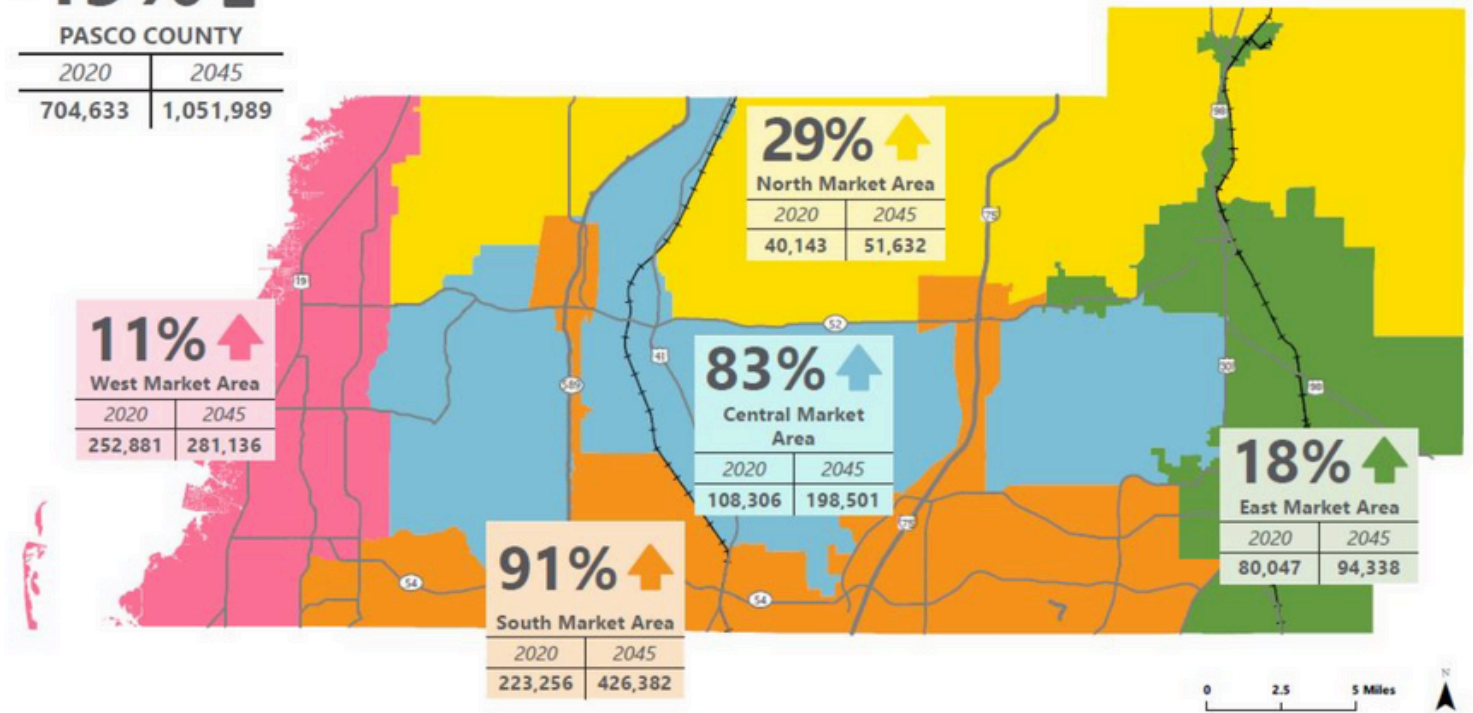
Pasco County Statistics

PROJECTED CHANGE IN
POPULATION & EMPLOYMENT

49% ↑

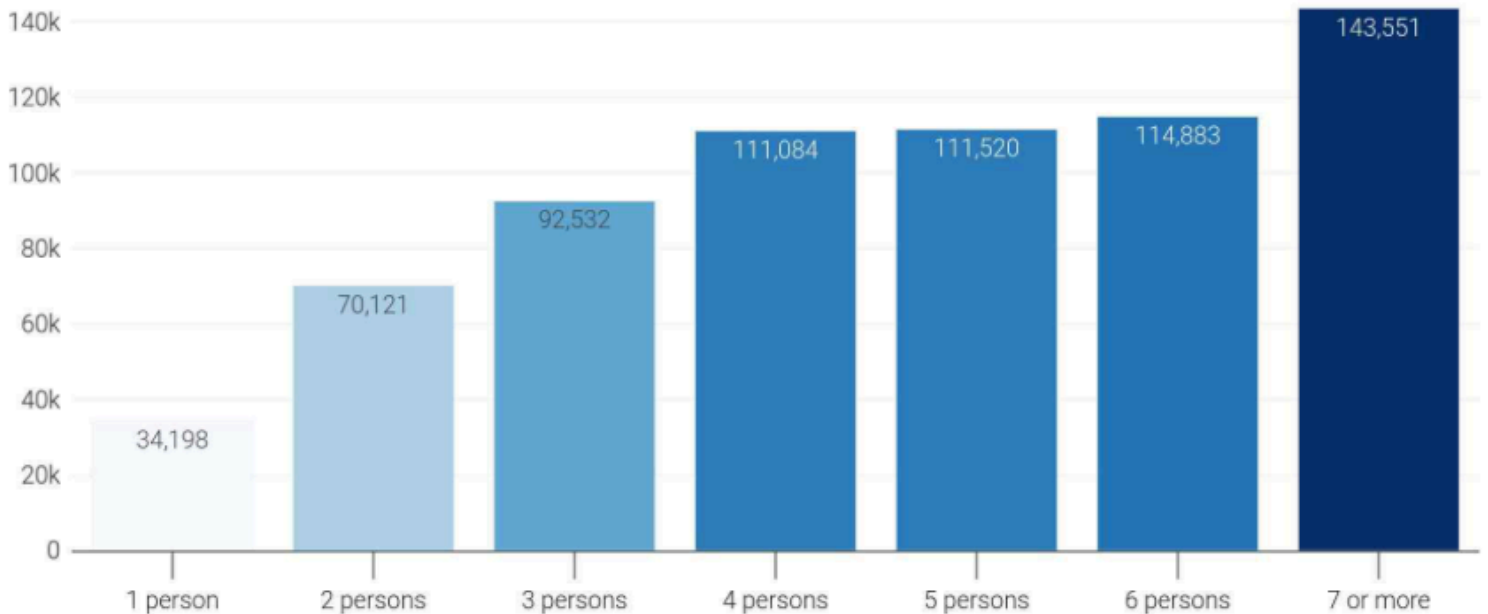
PASCO COUNTY

2020	2045
704,633	1,051,989



Pasco County, FL median household income, by household size

In 2022, 7-or-more-person households had the highest median income (\$143,551)



CONTACT



**FOR MORE
INFORMATION OR TO
SCHEDULE A SHOWING:**

**SEAN KWIATKOWSKI
PA**

📞 1-352-544-7253

🌐 www.theagentsk.com

📍 3783 Linden Drive
Spring Hill FL 34609

THE
AGENTS K
GROUP
YOUR HOME IS WHERE OUR ♥ IS

