



WILSON BUSINESS PARK

IAIN WILSON PROPERTIES

Office spaces & units to let in Glasgow's largest Business Park



IAIN WILSON PROPERTIES



IAIN WILSON PROPERTIES

Our business park offers office spaces and units to businesses of all sizes and from diverse sectors, with features such as:

- On-site car parking
- Kitchen facilities
- Photography Studio for hire
- Passenger Lift
- Goods Lift
- Loading bays for larger deliveries

About Us

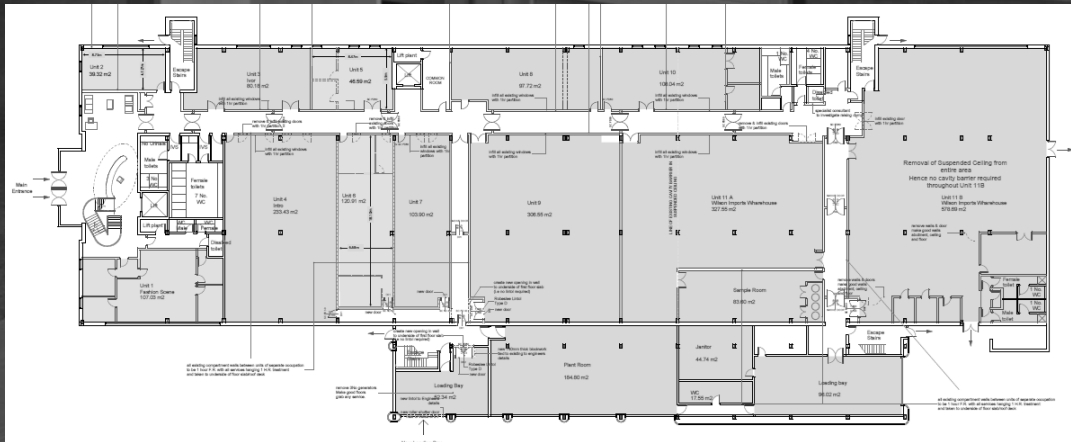
Wilson Business Park is situated within Hillington Park, with benefits of outstanding location, transport and local amenities.

Our Units to Let

With competitive rents suitable for any business

The Business Centre has two floors and offers ideal accommodation for small-medium businesses who require office accommodation in a central location.

- Open plan offices
- Short term licenses available
- Ideal for small-medium & start-up businesses
- Suspended ceiling with integrated modern lighting
- Can be sub-divided





Everything on our doorstep

There are a range of eat-in, drive-thru and take out food options available within the area, all within walking distance. Plus, a retail center with a line-up of retail and suppliers of essential services, just a 5-minute car journey away. Including a nursery for your little ones.



Location

- Close to the M8, junction 26 Hillington
- Hillington West Station is within walking distance
- 5 mins car journey, 3 miles, from Glasgow Airport
- Only 6 miles from Glasgow City Centre
- One of Scotland's busiest container ports at Greenock only 20 miles, accessible via the M8.





WILSON BUSINESS PARK

Thank You

John Alexander



0141 477 0130



john@iainwilsonproperties.co.uk



Iain Wilson Properties