

SINGLE TENANT QSR W/DRIVE-THRU

Investment Opportunity



Brand New Construction | New 15-Year Corporate Lease | \$145K AHAI within 1 Mile



1299 Olympia Fields Drive

OCONOMOWOC WISCONSIN

ACTUAL SITE



EXCLUSIVELY MARKETED BY



CONNOR BARTON

Associate
National Net Lease

connor.barton@srsre.com
D: 954.400.2748 | M: 954.479.9476
200 SW First Avenue, Suite 970
Fort Lauderdale, FL 3330
FL License No. SL3390950

PATRICK NUTT

Senior Managing Principal &
Co-Head of National Net Lease

patrick.nutt@srsre.com
D: 954.302.7365 | M: 703.434.2599
1501 W. Cleveland Street, Suite 300
Tampa, FL 33606
FL License No. BK3120739

WILLIAM WAMBLE

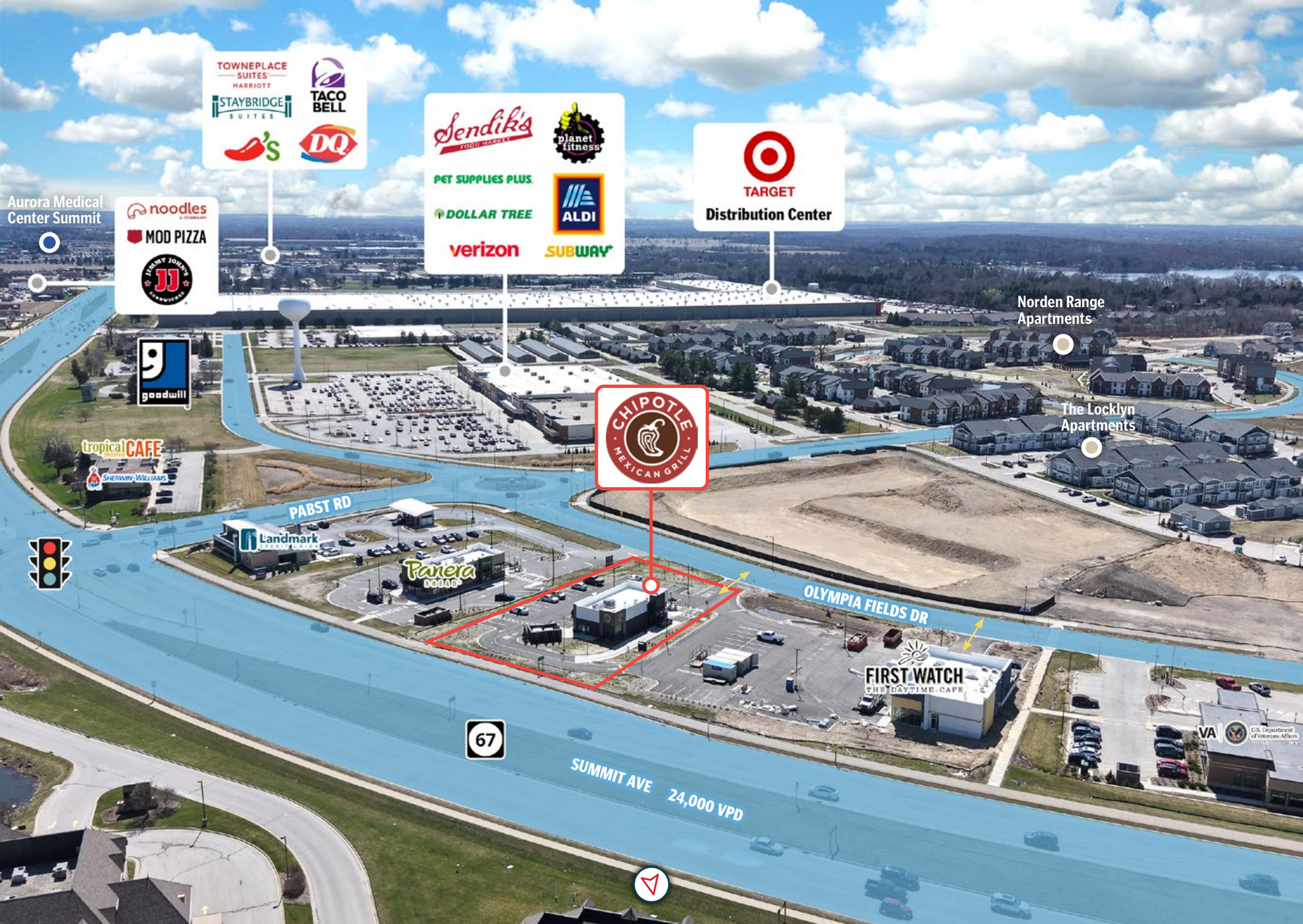
EVP & Principal
National Net Lease

william.wamble@srsre.com
D: 813.371.1079 | M: 813.434.8278
1501 W. Cleveland Street, Suite 300
Tampa, FL 33606
FL License No. SL3257920



NATIONAL NET LEASE

Real Estate Broker of Record: Sean Lutz, SRS Real Estate Partners, LLC | WI License No. 60281-90



TOWNEPLACE SUITES MARRIOTT
STAYBRIDGE SUITES
TACO BELL
pepper's
DQ

Sendika's FOOD MARKET
planet fitness
PET SUPPLIES PLUS
DOLLAR TREE
ALDI
verizon
SUBWAY

TARGET
Distribution Center

noodles
MOD PIZZA
TODD JOHNSON RESTAURANTS

goodwill

tropical CAFE
SHERWIN-WILLIAMS

CHIPOTLE
MEXICAN GRILL

Landmark
CREATING BUSINESS

Panera
BOBAC

FIRST WATCH
THE DAYTIME CAFE

67

SUMMIT AVE 24,000 VPD

Norden Range Apartments

The Locklyn Apartments

PABST RD

OLYMPIA FIELDS DR

VA U.S. Department of Veterans Affairs



Whitman Park Shopping Center



Oconomowoc High School

ProHealth Oconomowoc Memorial Hospital



live nine wealth management.



Lake Country Village



SUMMIT AVE 24,000 VPD

OLYMPIA FIELDS DR



SITE OVERVIEW



First Watch Outparcel Also Available for Sale. Contact Brokers for More Information

OFFERING SUMMARY



4,000+

LOCATIONS
GLOBALLY

\$11.9B+

2025
REVENUE

NYSE: CMG

STOCK
SYMBOL

OFFERING

Pricing	\$3,133,333
Net Operating Income	\$164,500
Cap Rate	5.25%

PROPERTY SPECIFICATIONS

Property Address	1299 Olympia Fields Drive, Oconomowoc, WI 53066
Rentable Area	2,350 SF
Land Area	0.80 AC
Year Built	2026
Tenant	Chipotle
Guaranty	Corporate
Lease Type	NN+
Landlord Responsibilities	Roof and Structure
Lease Term	15 Years
Increases	10% Every 5 Years
Options	4 (5-Year)
Rent Commencement	2/27/2026
Lease Expiration	3/31/2041

[CLICK HERE FOR A FINANCING QUOTE](#)

JORDAN YAROSH

Vice President, Debt & Equity

jordan.yarosh@srsre.com | M: 516.382.1873

RENT ROLL & INVESTMENT HIGHLIGHTS



Tenant Name	Square Feet	LEASE TERM		RENTAL RATES				
		Lease Start	Lease End	Begin	Increase	Monthly	Annually	Options
Chipotle	2,350	2/27/2026	3/31/2041	Year 1	-	\$13,708	\$164,500	4 (5-Year)
(Corporate Guaranty)				Year 6	10%	\$15,079	\$180,950	
				Year 11	10%	\$16,587	\$199,045	
10% Rental Increases Beginning of Each Option								

Brand New 15-Year Lease | Options To Extend | Scheduled Increases

- The tenant recently executed a brand new 15-year lease with 4 (5-year) options to extend, demonstrating long-term commitment to the site
- The lease features 10% increases every 5-years throughout the initial term and at the beginning of each option period
- The lease is corporate guaranteed by Chipotle Mexican Grill, Inc., a publicly traded (NYSE: CMG) and nationally recognized tenant with over 4,000 locations

NN+ Lease | Fee Simple Ownership | Limited Landlord Responsibilities

- Tenant pays for CAM, taxes, insurance and maintains most aspects of the premises
- Landlord responsible for roof & structure

Prime Location | Excellent Access & Visibility from Summit Avenue

- The asset is located directly off of Summit Avenue, one of Oconomowoc's primary north-south thoroughfares connecting residential neighborhoods to interstate 94 (24,000 VPD)
- The asset has excellent visibility and multiple points of ingress/egress
- **Oconomowoc is currently growing at a rate of 2.19% annually and its population has increased by 14.74% since the most recent census**

Rapidly Expanding Mixed-Use Trade Area | Significant Residential Growth | Strong National Co-Tenancy

- Subject property is an outparcel within Olympia Fields, a mixed-use redevelopment transforming the area into a dynamic retail, residential, and entertainment destination
- New Developments Include:
 - **The Social:** +60,000 SF year round entertainment and sports complex
 - **Olympia Ski Hill Apartments:** 624 residential units
 - **Five-Story Mixed Use Building:** delivering 116 residential units along with over 19,000 SF of retail
 - **Locklyn Apartments:** 224-unit luxury multifamily community
- Chipotle is strategically positioned among newly constructed national and regional retailers including First Watch, Panera Bread, Sendik's Food Market and Landmark Credit Union

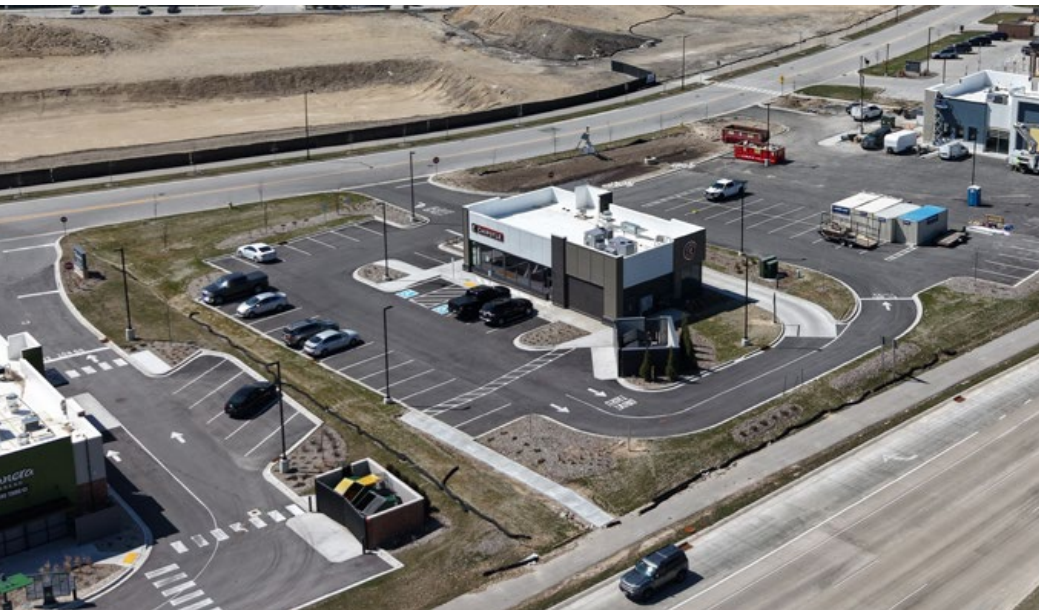
Strong Demographics In 5-mile Trade Area

- More than 44,000 residents and 19,000 employees support the trade area
- \$154,526 average household income

PROPERTY PHOTOS



WATCH DRONE VIDEO



PROPERTY PHOTOS



PROPERTY PHOTOS





CHIPOTLE MEXICAN GRILL

chipotle.com

Company Type: Public (NYSE: CMG)

Locations: 4,000+

2025 Employees: 130,301

2025 Revenue: \$11.93 Billion

2025 Net Income: \$1.54 Billion

2025 Assets: \$8.99 Billion

2025 Equity: \$2.83 Billion

Chipotle Mexican Grill, Inc. (NYSE: CMG) is cultivating a better world by serving responsibly sourced, classically-cooked, real food with wholesome ingredients without artificial colors, flavors or preservatives. There are over 4,000 restaurants as of December 31, 2025, in the United States, Canada, the United Kingdom, France, Germany, and the Middle East and it is the only restaurant company of its size that owns and operates all its restaurants in North America and Europe. With over 130,000 employees passionate about providing a great guest experience, Chipotle is a longtime leader and innovator in the food industry. Chipotle is committed to making its food more accessible to everyone while continuing to be a brand with a demonstrated purpose as it leads the way in digital, technology and sustainable business practices.

Source: newsroom.chipotle.com, finance.yahoo.com



CHIPOTLE ANNOUNCES FOURTH QUARTER AND FULL YEAR 2025 RESULTS

NEWPORT BEACH, Calif., Feb. 3, 2026 /PRNEWSWIRE/ -- Chipotle Mexican Grill, Inc. (NYSE: CMG) today reported financial results for its fourth quarter and fiscal year ended December 31, 2025.

Fourth quarter highlights, year over year:

- Total revenue increased 4.9% to \$3.0 billion
- Comparable restaurant sales decreased 2.5%
- Operating margin was 14.1%, a decrease from 14.6%
- Restaurant level operating margin¹ was 23.4%, a decrease from 24.8%
- Diluted earnings per share was \$0.25, a 4.2% increase from \$0.24
- Adjusted diluted earnings per share¹ remained flat at \$0.25
- Opened 132 company-owned restaurants, with 97 locations including a Chipotlane, and seven international partner-operated restaurants

Full year 2025 highlights, year over year:

- Total revenue increased 5.4% to \$11.9 billion
- Comparable restaurant sales decreased 1.7%
- Operating margin was 16.2%, a decrease from 16.9%
- Restaurant level operating margin¹ was 25.4%, a decrease from 26.7%
- Diluted earnings per share was \$1.14, a 2.7% increase from \$1.11
- Adjusted diluted earnings¹ per share was \$1.17, a 4.5% increase from \$1.12
- Opened 334 company-owned restaurants, with 257 locations including a Chipotlane, and 11 international partner-operated restaurants

«Through our proven business model, prudent investments in operational excellence and the support of a strong balance sheet, 2025 was a year of progress and resilience for Chipotle.



Against a dynamic consumer backdrop, we opened a record number of restaurants globally and grew Q4 and full year revenue,» said Scott Boatwright, Chief Executive Officer, Chipotle. «This momentum will fuel our next phase of growth, driven by our ‘Recipe for Growth’ strategy which leans into what uniquely differentiates our brand to accelerate transactions and expand our footprint globally.»

Outlook For 2026, management is anticipating the following:

- Full year comparable restaurant sales to be about flat
- 350 to 370 new restaurant openings, which includes 10 to 15 international partner-operated restaurants. Around 80% of company-owned restaurants will have a Chipotlane
- An estimated underlying effective full year tax rate between 24% and 26% before discrete items

Source: Chipotle
[Read Full Report HERE](#)

PROPERTY OVERVIEW



LOCATION



Oconomowoc, Wisconsin
Waukesha County
Milwaukee-Waukesha-West Allis MSA

PARKING



There are approximately 31 parking spaces on the owned parcel.
The parking ratio is approximately 13.2 stalls per 1,000 SF of leasable area.

ACCESS



Olympia Fields Drive: 2 Access Points

PARCEL



Parcel Number: OCOC0614975021
Acres: 0.80
Square Feet: 34,848

TRAFFIC COUNTS



Summit Avenue/State Highway 67: 24,000 VPD

CONSTRUCTION



Year Built: 2026

IMPROVEMENTS



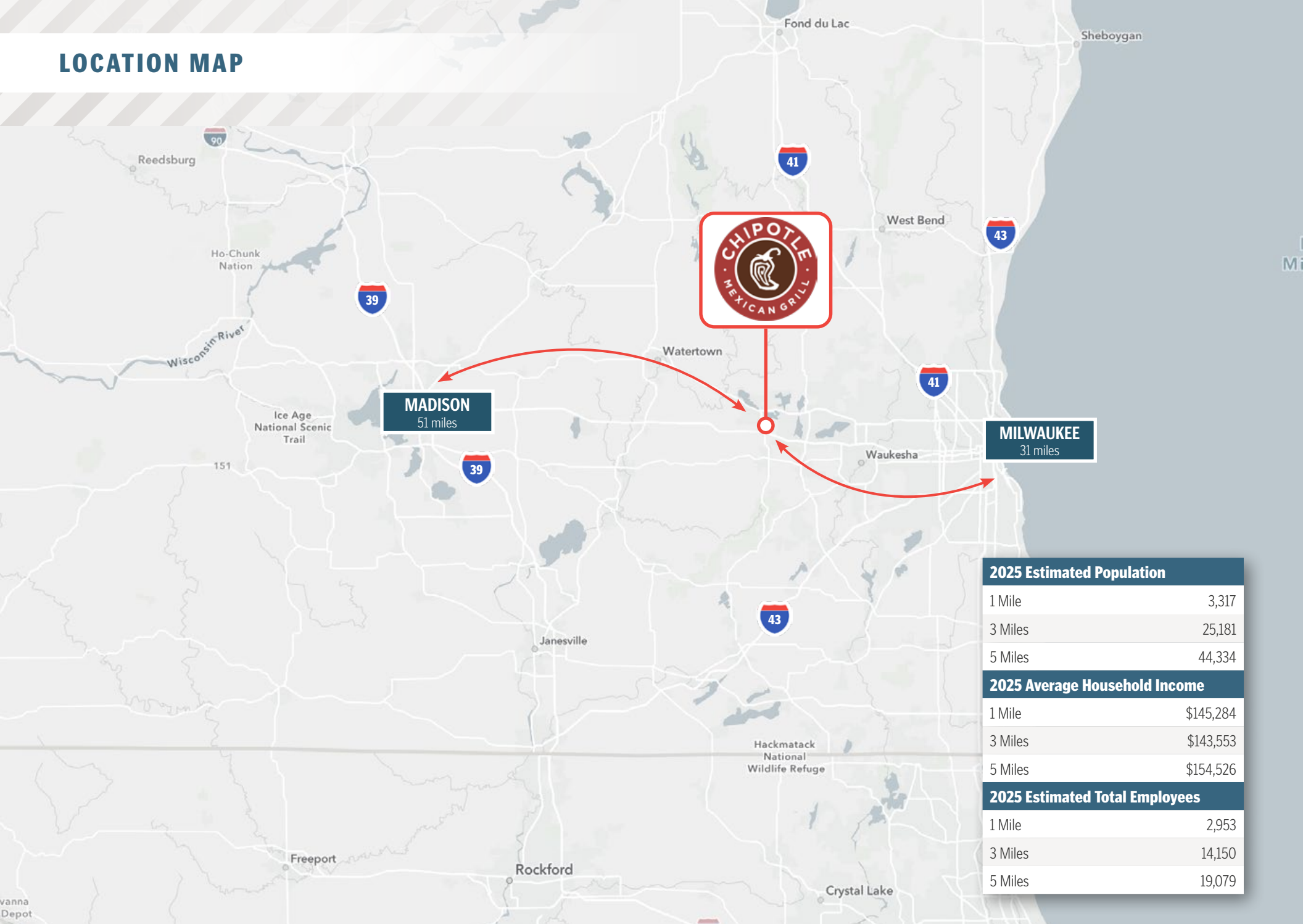
There is approximately 2,350 SF of existing building area

ZONING



GC - General Commercial

LOCATION MAP



MADISON
51 miles

MILWAUKEE
31 miles

2025 Estimated Population	
1 Mile	3,317
3 Miles	25,181
5 Miles	44,334
2025 Average Household Income	
1 Mile	\$145,284
3 Miles	\$143,553
5 Miles	\$154,526
2025 Estimated Total Employees	
1 Mile	2,953
3 Miles	14,150
5 Miles	19,079



SUMMIT AVE
9,700 VPD

Oconomowoc High School
ProHealth Oconomowoc Memorial Hospital

Wilkinson Manor / Jeffworth Apartments

Oconomowoc Football Field
Lowell Place

Whitman Place Apartments

Lexington Point Apartments

Panera BREAD
FIRST WATCH THE DAYTIME CAFE
REICHL & KOLSTAD ORTHODONTICS
VA U.S. Department of Veterans Affairs

Paganica Golf Course

Norden Range Apartments

Olympia Ski Hill 624 Housing Units
The Locklyn Apartments

Lake Country Village

Whitman Park Shopping Center

ACE The helpful place.
Hoover's Pet and Squirrel Supply
THE CHOCOLATE FACTORY THE BAKERY & ICE CREAM
aegis therapies
BoxDrop
Walgreens
Valvoline

CHIPOTLE MEXICAN GRILL

Sendika's FOOD MARKET
planet fitness
ALDI
PET SUPPLIES PLUS
SUBWAY
DOLLAR TREE
verizon
tropical CAFE SMOOTHIE
SHERWIN-WILLIAMS
goodwill

OCONOMOWOC PKWY

67

24,000 VPD



Oconomowoc
VA Clinic

FIRST WATCH
THE DAYTIME CAFE

67

SUMMIT AVENUE 24,000 VPD

OLYMPIA FIELDS DRIVE

Pylon Sign



AREA OVERVIEW



	1 Mile	3 Miles	5 Miles
Population			
2025 Estimated Population	3,317	25,181	44,334
2030 Projected Population	3,854	26,401	45,670
2025 Median Age	46.2	44.5	45.7
Households & Growth			
2025 Estimated Households	1,281	10,646	18,363
2030 Projected Households	1,544	11,380	19,259
Income			
2025 Estimated Average Household Income	\$145,284	\$143,553	\$154,526
2025 Estimated Median Household Income	\$105,791	\$109,784	\$113,541
Businesses & Employees			
2025 Estimated Total Businesses	180	1,116	1,664
2025 Estimated Total Employees	2,953	14,150	19,079



OCONOMOWOC, WISCONSIN

Oconomowoc is a scenic city located in Waukesha County, southeastern Wisconsin, approximately 35 miles west of Milwaukee and 55 miles east of Madison. Known for its picturesque lake setting and historic charm, Oconomowoc is part of Wisconsin’s Lake Country region. The city offers a blend of small-town character, waterfront living, and suburban convenience with strong regional connectivity via Interstate 94. Oconomowoc has a 2026 population of 20,897.

Oconomowoc’s economy is supported by manufacturing, healthcare, retail, professional services, and small businesses. The city benefits from its location between Milwaukee and Madison, allowing residents access to a wide range of employment opportunities. Local industrial parks host manufacturing and distribution operations, while healthcare providers and retail centers contribute significantly to employment. Commercial activity is concentrated along major corridors such as Summit Avenue and near I-94, supporting continued economic growth.

Oconomowoc is known for its lakes and outdoor recreation. Lac La Belle and Fowler Lake are central attractions, offering boating, fishing, and waterfront activities. The city features parks, walking trails, and a scenic downtown area with shops, restaurants, and community events. Cultural attractions include local theaters and festivals, while nearby golf courses and nature areas enhance its appeal as a recreational destination.

Higher education opportunities are available nearby through institutions such as Waukesha County Technical College, University of Wisconsin–Milwaukee, and other colleges throughout southeastern Wisconsin. The nearest major airport is General Mitchell International Airport.



THE EXCLUSIVE NATIONAL NET LEASE TEAM of SRS Real Estate Partners

300+

TEAM
MEMBERS

29

OFFICES

\$6.5B+

TRANSACTION
VALUE
company-wide
in 2025

930+

CAPITAL MARKETS
PROPERTIES
SOLD
in 2025

\$3.5B+

CAPITAL MARKETS
TRANSACTION
VALUE
in 2025



© 2026 SRS Real Estate Partners, LLC. All rights reserved.

All information in this document and related marketing materials is confidential and intended solely for the recipient and their authorized representatives. This document was prepared by SRS Real Estate Partners, LLC ("SRS") and approved for distribution. While reasonable efforts were made to ensure accuracy, SRS and those represented by SRS make no guarantees, representations, or warranties—express or implied—regarding the completeness or accuracy of the information provided, whether in this document or any other form of communication. Documents have been referred to in summary and should not be considered legal analysis. This material is not all-inclusive and may not contain all the information you require. Any financial projections are provided for reference only and reflect assumptions as of the date of preparation. They may not account for changes in economic performance, market conditions, or future activities related to the property. These materials were created for marketing purposes only and no recipient should make any investment decision predicated on the information contained within. Recipients are strongly encouraged to conduct their own independent evaluation and analysis of any received information and of the subject property.

SRSRE.COM/CapitalMarkets