



CLASS A OFFICE SPACE FOR LEASE

6055 LAKESIDE COMMONS DRIVE, SUITE 440
MACON, GA 31210 BIBB COUNTY

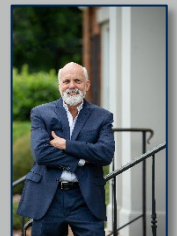


LEASE RATE: \$21.00/SF, FULL SERVICE | ±1,896 SF



ADAM BAILEY C: 478.733.7961 | STERLING BAILEY C: 478.951.9443
ABAILEY@THESUMMITGROUPMACON.COM | SBAILEY@THESUMMITGROUPMACON.COM
4124 ARKWRIGHT ROAD, SUITE 1, MACON, GA 31210
O: 478.750.7507

WWW.THESUMMITGROUPMACON.COM



PROPERTY INFORMATION

- Conveniently located off Bass Road and I-75
- Traffic Counts (GDOT 2023):
 - Bass Road – 13,700 VPD
- Current tenants include:
 - Morgan Stanley
 - Securian
 - KaMin
 - McArthur Law Firm
 - Dellacona Law Firm
 - Active Minerals
 - Department of Revenue
 - Lifestance
 - Pearson Vue
 - SCP Eyecare

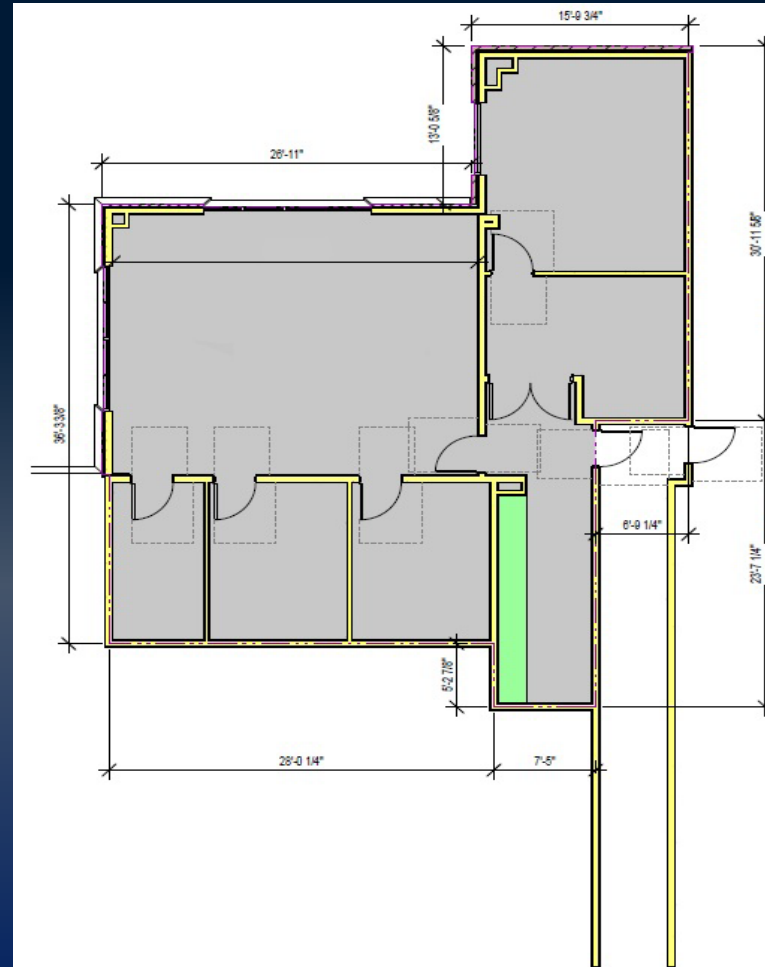


6055 LAKESIDE COMMONS DRIVE
SUITE 440
MACON, GA 31210
BIBB COUNTY



FLOOR PLAN

- Lobby
- Three (3) private offices
- Bullpen area
- Reception area
- Storage/IT closet



6055 LAKESIDE COMMONS DRIVE

SUITE 440

MACON, GA 31210

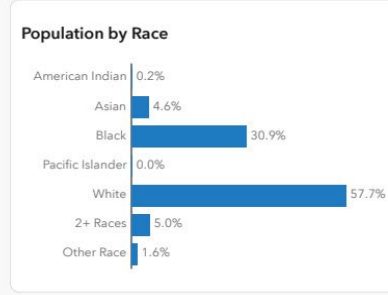
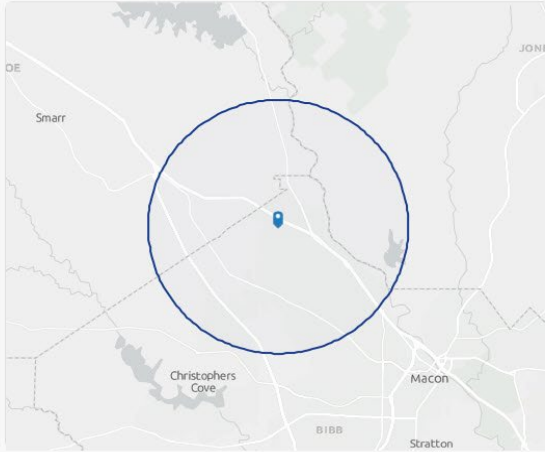
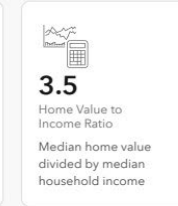
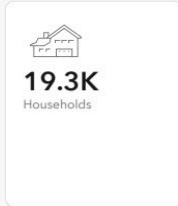
BIBB COUNTY



DEMOGRAPHICS

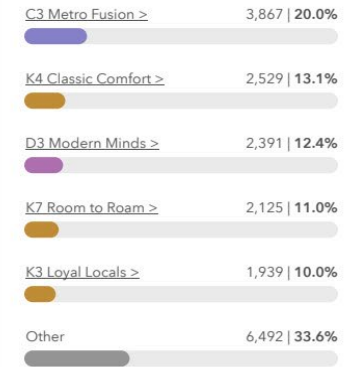
Tapestry Profile

6055 Lakeside Commons Dr, Macon, Georgia, 31210 2 | Ring of 5 miles



Tapestry

Top 5 segments by household count



Metro Fusion accounts for 20% of households in the area which is **18.7% higher** than the U.S.

Source: This infographic contains data provided by Esri (2025). © 2025 Esri

6055 LAKESIDE COMMONS DRIVE
SUITE 440
MACON, GA 31210
BIBB COUNTY



AERIAL



6055 LAKESIDE COMMONS DRIVE
SUITE 440
MACON, GA 31210
BIBB COUNTY



EXTERIOR PHOTO



The information contained herein has been compiled from various sources, both private and public. It is accurate and complete only to the extent to which The Summit Group has been able to ascertain from third party sources. As such, no warranty or guarantee is given or implied with regard to the accuracy or completeness of any information contained herein. Any interested party shall be required to conduct its own due diligence and investigations to verify, review, audit, or otherwise insure the information contained herein.

