

FREEHOLD, NJ

3390 ROUTE 9, FREEHOLD, NJ 07728



OFFERING SUMMARY

Available SF: 2,000 - 8,000 SF

Lease Rate: Call For Details

NEIGHBORING TENANTS



PROPERTY OVERVIEW

3 Pad Sites on Route 9 For Lease

PROPERTY HIGHLIGHTS

- (2) 8,000 SF Pad Sites Available (Divisible)
- (1) 2,000 SF Pad Site w/ Drive Thru
- Excellent Highway Exposure and Visibility
- Liquor License Available
- Restaurant Pad Opportunities with Drive Thru Available
- Great for Gas and Convenience, Daycare Center, Car Dealership, Adult Daycares, Senior Living, Quick Service Restaurants, Lifestyle Tenants, Med Spas, Salons, and Medical
- 60,000+ VPD

FOR MORE INFORMATION CONTACT:

MARC PALESTINA

201.703.9700 x149

mpalestina@thegoldsteingroup.com

CJ HUTER

201.703.9700 x118

cjhuter@thegoldsteingroup.com

LEW FINKELSTEIN

201.703.9700 x122

lfinkelstein@thegoldsteingroup.com



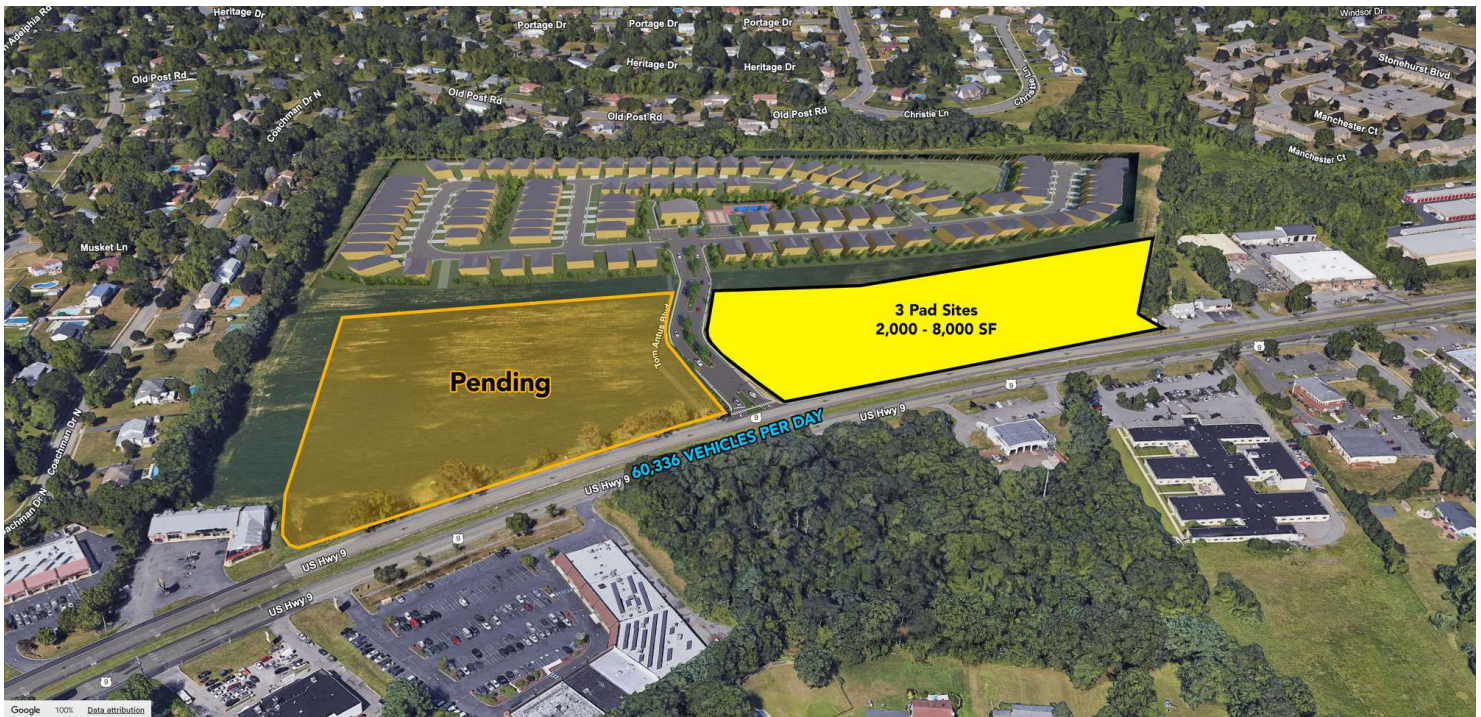
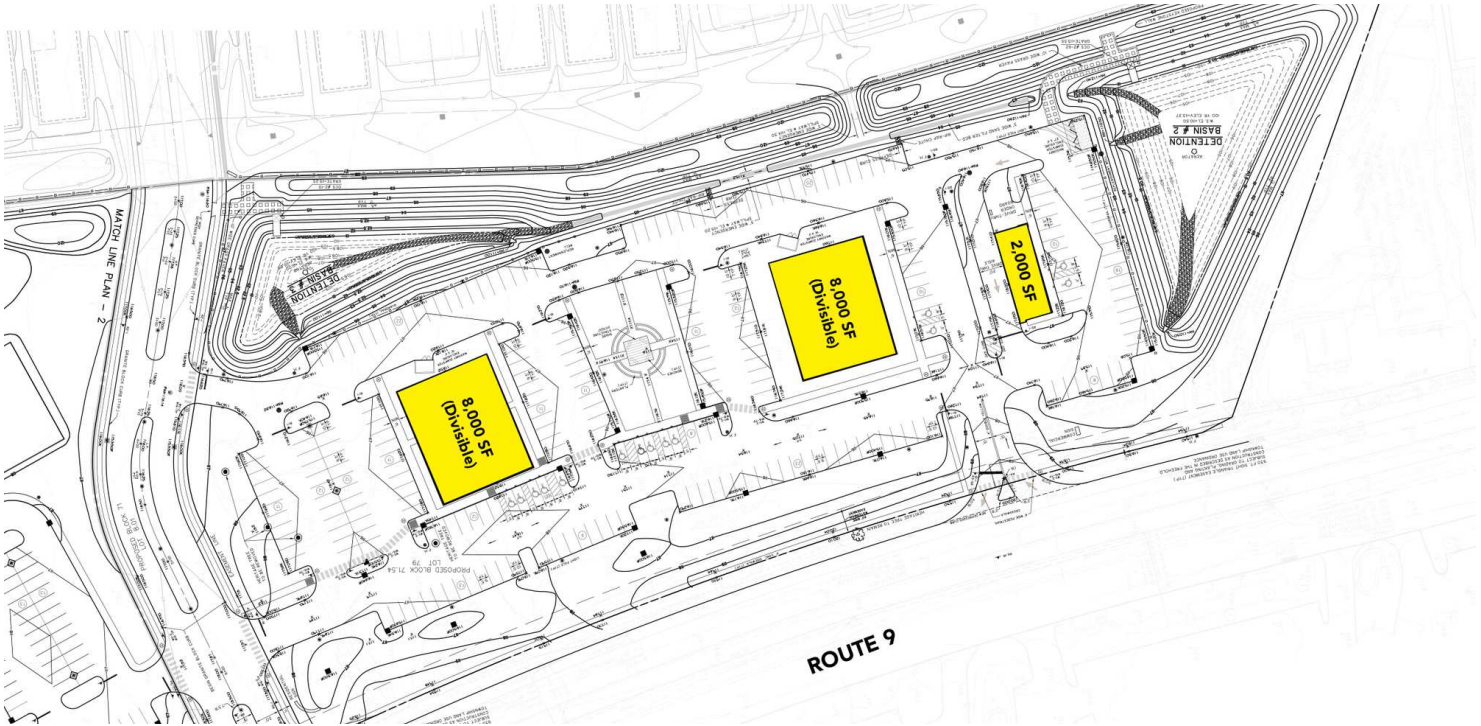
THEGOLDSTEINGROUP.COM

Licensed Real Estate Broker | 45 EISENHOWER DRIVE | SUITE 246 | PARAMUS, NJ 07652

All information is from sources deemed reliable and is submitted subject to errors, omissions, change of price, terms, rental, prior sale and withdrawal without notice.

FREEHOLD, NJ

3390 ROUTE 9, FREEHOLD, NJ 07728



FOR MORE INFORMATION CONTACT:

MARC PALESTINA

201.703.9700 x149

mpalestina@thegoldsteingroup.com

CJ HUTER

201.703.9700 x118

cjhuter@thegoldsteingroup.com

LEW FINKELSTEIN

201.703.9700 x122

lfinkelstein@thegoldsteingroup.com



Licensed Real Estate Broker | 45 EISENHOWER DRIVE | SUITE 246 | PARAMUS, NJ 07652

THEGOLDSTEINGROUP.COM

All information is from sources deemed reliable and is submitted subject to errors, omissions, change of price, terms, rental, prior sale and withdrawal without notice.

FREEHOLD, NJ

3390 ROUTE 9, FREEHOLD, NJ 07728



FOR MORE INFORMATION CONTACT:

MARC PALESTINA

201.703.9700 x149
mpalestina@thegoldsteingroup.com

CJ HUTER

201.703.9700 x118
cjhuter@thegoldsteingroup.com

LEW FINKELSTEIN

201.703.9700 x122
lfinkelstein@thegoldsteingroup.com



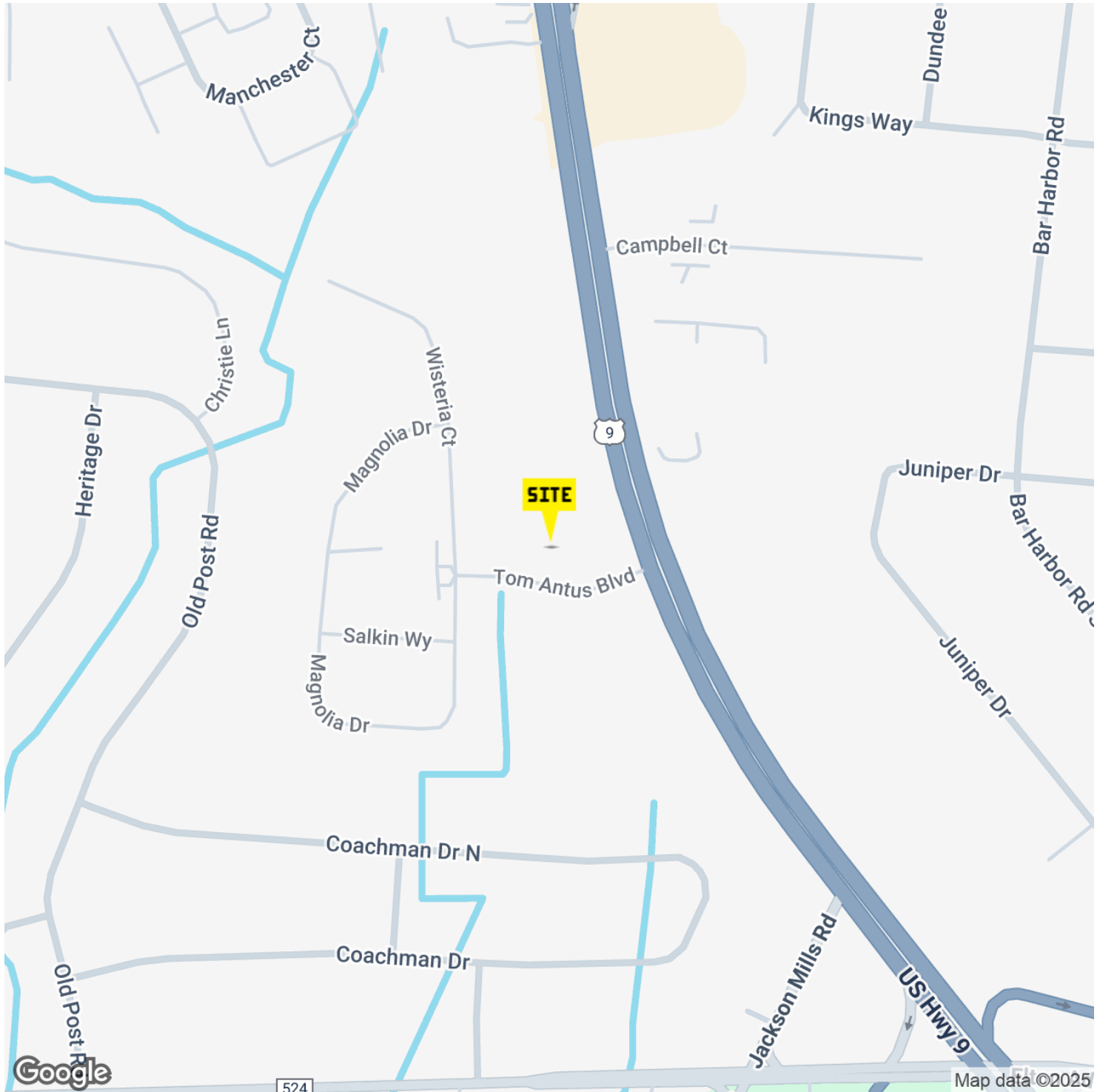
THEGOLDSTEINGROUP.COM

Licensed Real Estate Broker | 45 EISENHOWER DRIVE | SUITE 246 | PARAMUS, NJ 07652

All information is from sources deemed reliable and is submitted subject to errors, omissions, change of price, terms, rental, prior sale and withdrawal without notice.

FREEHOLD, NJ

3390 ROUTE 9, FREEHOLD, NJ 07728



FOR MORE INFORMATION CONTACT:

MARC PALESTINA

201.703.9700 x149
mpalestina@thegoldsteingroup.com

CJ HUTER

201.703.9700 x118
cjhuter@thegoldsteingroup.com

LEW FINKELSTEIN

201.703.9700 x122
lfinkelstein@thegoldsteingroup.com



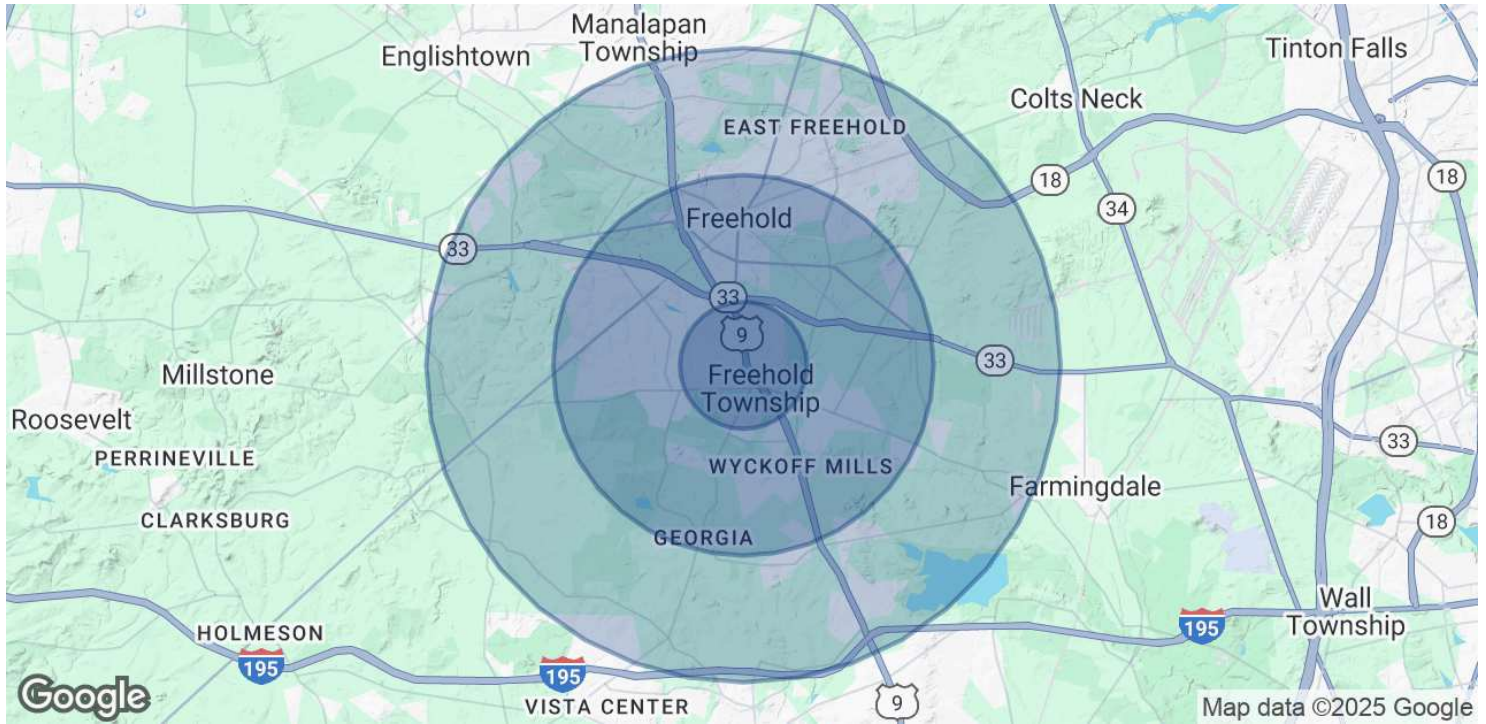
Licensed Real Estate Broker | 45 EISENHOWER DRIVE | SUITE 246 | PARAMUS, NJ 07652

THEGOLDSTEINGROUP.COM

All information is from sources deemed reliable and is submitted subject to errors, omissions, change of price, terms, rental, prior sale and withdrawal without notice.

FREEHOLD, NJ

3390 ROUTE 9, FREEHOLD, NJ 07728



POPULATION	1 MILE	3 MILES	5 MILES
Total Population	6,199	47,735	84,823
Average Age	40	43	43
Average Age (Male)	40	41	41
Average Age (Female)	41	44	44

HOUSEHOLDS & INCOME	1 MILE	3 MILES	5 MILES
Total Households	2,087	17,956	30,236
# of Persons per HH	3	2.7	2.8
Average HH Income	\$206,995	\$153,997	\$178,619
Average House Value	\$614,618	\$555,962	\$634,386

Demographics data derived from AlphaMap

FOR MORE INFORMATION CONTACT:

MARC PALESTINA

201.703.9700 x149
mpalestina@thegoldsteingroup.com

CJ HUTER

201.703.9700 x118
cjhuter@thegoldsteingroup.com

LEW FINKELSTEIN

201.703.9700 x122
lfinkelstein@thegoldsteingroup.com



Licensed Real Estate Broker | 45 EISENHOWER DRIVE | SUITE 246 | PARAMUS, NJ 07652

THEGOLDSTEINGROUP.COM

All information is from sources deemed reliable and is submitted subject to errors, omissions, change of price, terms, rental, prior sale and withdrawal without notice.