



M E R I D I A N

147 S. CHERRY STREET, SUITE 200 | WINSTON-SALEM, NC 27101 | P 336.722.1986 | F 336.723.3173 | MERIDIANREALTY.COM

Office | Flex

309 Concord St Greensboro, NC 27406



Two free-standing office/flex buildings near Randleman Road, offering multiple office spaces, conference rooms, and restrooms. The property includes approximately 0.75 acres of fenced outdoor storage.

DEMOGRAPHICS	1 mi	3 mi	5 mi
POPULATION	8,525	92,097	170,640
HOUSEHOLDS	3,243	33,637	66,847
HOUSEHOLD INCOME	\$45,802	\$64,612	\$77,345

FOR SALE: \$725,000

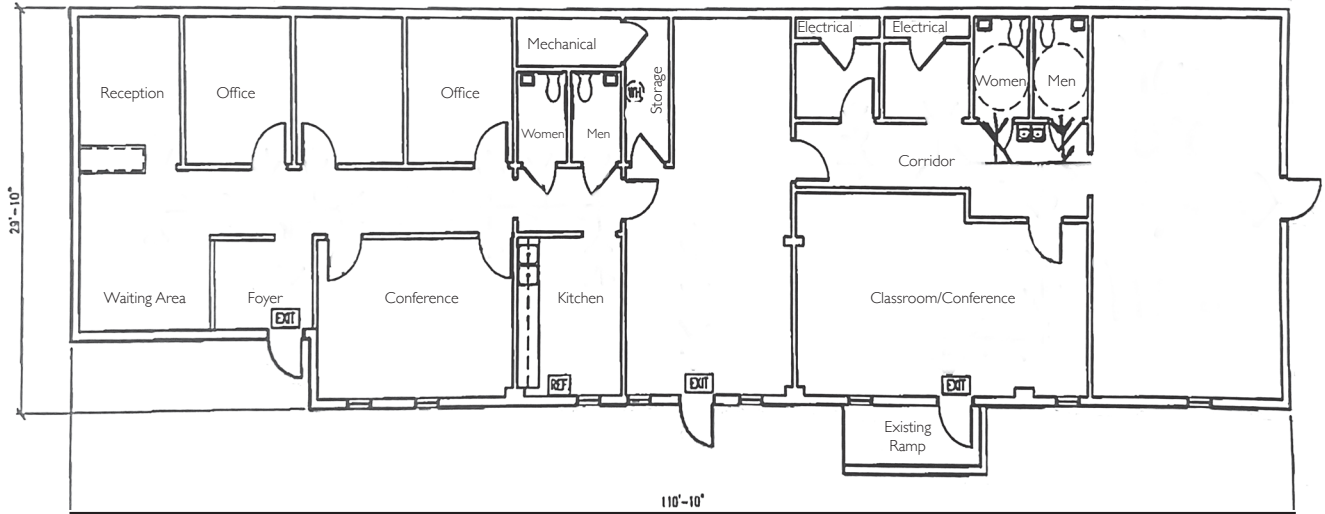
For more information:

William T. Bartholomew, Jr., CCIM

William@meridianrealty.com

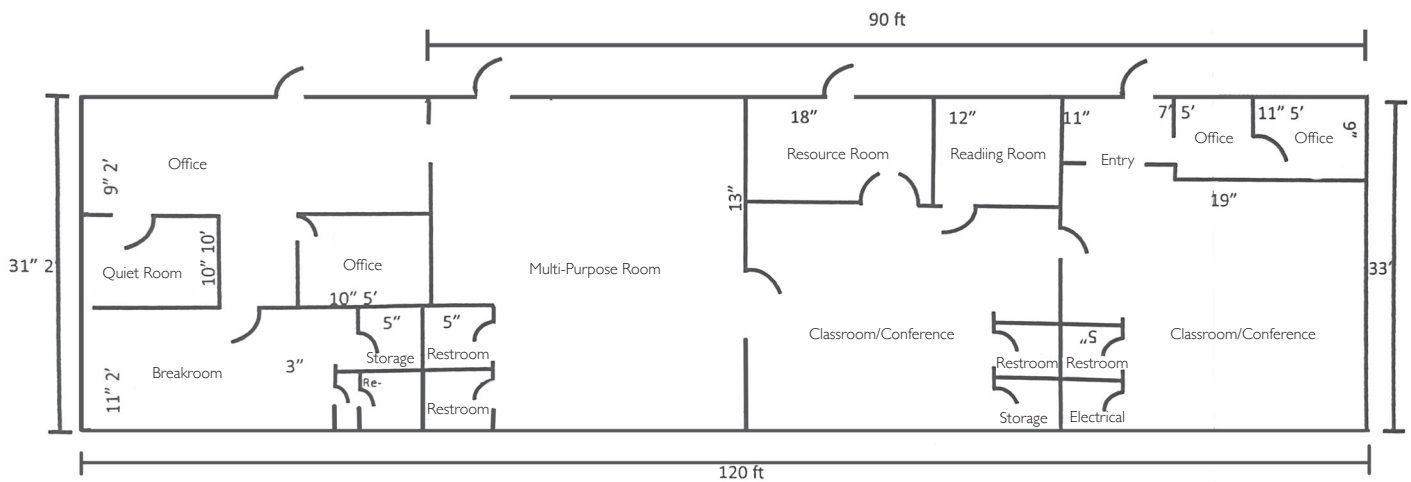
336.480.2335

Floorplan 309-1



*Floorplan dimensions and layouts are estimated and subject to verification.

Floorplan 309-2



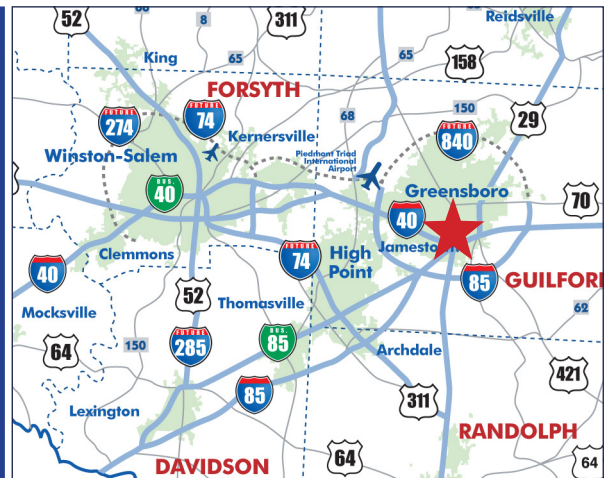
*Floorplan dimensions and layouts are estimated and subject to verification.

Aerial



Property Details

- Two Buildings
- Zoned LI
- Outdoor storage available
- For Sale: \$725,000



No warranty or representation (express or implied) is made as to the accuracy or completeness of the information set forth herein. All information is submitted subject to errors, omissions, change of price, prior lease or sale, and withdrawal without notice. All marketing material produced by the Meridian Realty Group is proprietary. Any reproduction is expressly prohibited.



THE MERIDIAN REALTY GROUP | 147 S. CHERRY STREET, SUITE 200 | WINSTON-SALEM, NC 27101

P 336.722.1986 | F 336.723.3173