

FOR LEASE  
MANUFACTURING/LIGHT  
ASSEMBLY/DISTRIBUTION

1340 N. Mosley | Wichita, KS

Lease Rate : \$2.50/SF, NNN | Est. NNN's: TBD

**Building Size:** 57,600 SF

**Available Space:** 25,200 SF  
Office: 700 SF  
Warehouse: 24,500 SF

**Column Spacing:** See site plan

**Zoning:** Limited Industrial

**Parking:** 20+ spaces

**Year Built:** 1955

**Power:** 100A, 125V, 3-phase

For Information, Please Contact:

**Grant Tidemann, SIOR**  
Direct: 316-292-3908  
[tidemann@weigand.com](mailto:tidemann@weigand.com)

**Bradley Tidemann, SIOR**  
Direct: 316-292-3947  
[btidemann@weigand.com](mailto:btidemann@weigand.com)

**Lighting:** T-5

**Ceiling Height:** 13' clear

**Dock High Doors:** (2) 12'x12'

**Property Highlights:**

- Clean, dock-high warehouse available for lease.
- Close to I-135 access at 13th Street.
- Potential outside storage available.
- Two offices.
- One restroom.

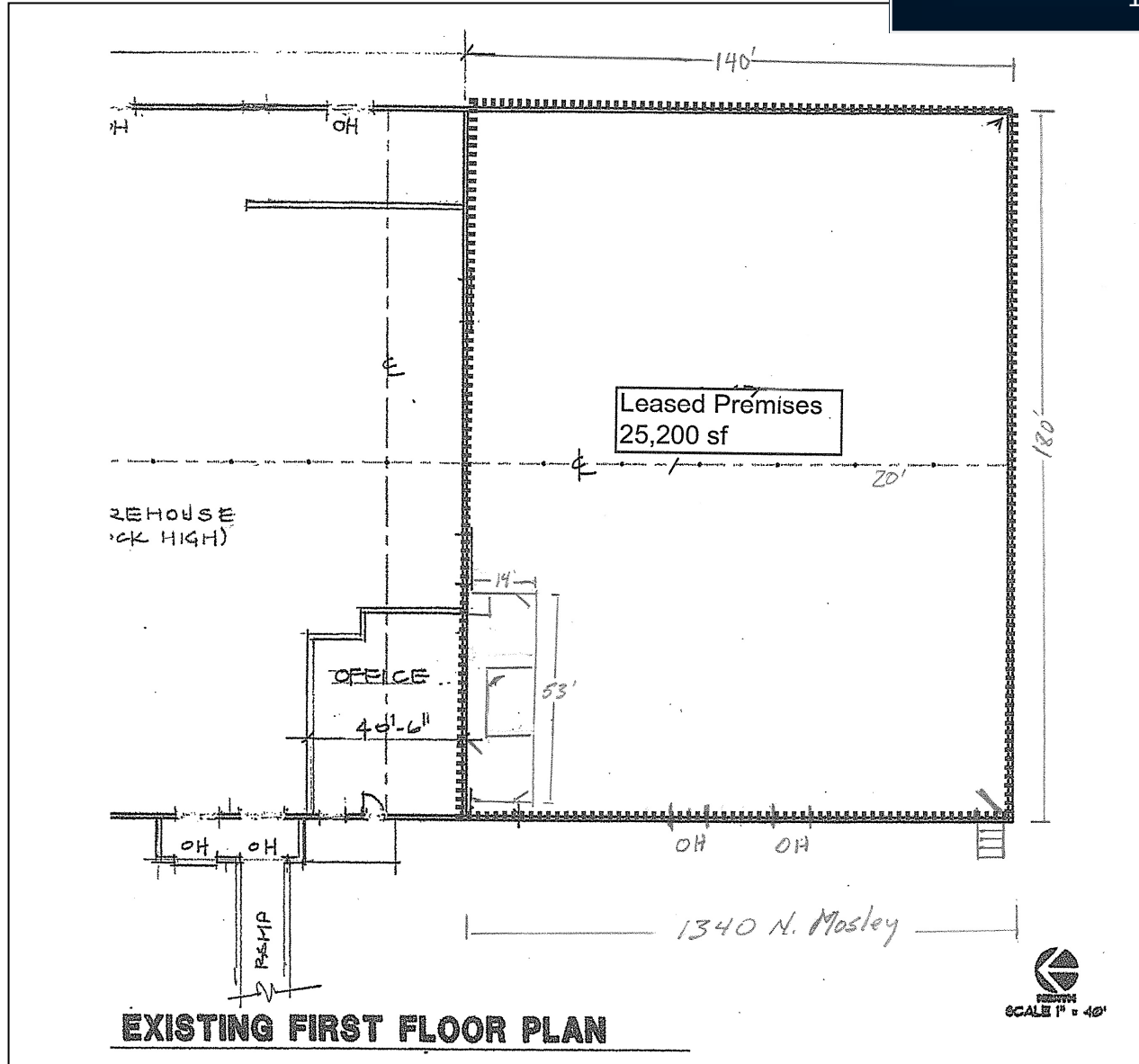
Demographics	1 Mile	3 Miles	5 Miles
Population	11,011	70,461	110,126
Avg. HH Income	\$90,357	\$88,187	\$83,979
Median Age	47.3	37.9	37.2



# FLOOR PLAN

## FOR LEASE MANUFACTURING/LIGHT ASSEMBLY/DISTRIBUTION

1340 N. Mosley | Wichita, KS



All information furnished regarding property for sales, rent, exchange or financing is from sources deemed reliable but no guarantee is made or responsibility assumed as to its accuracy or completeness and you are advised to make your own analysis and verification. Broker hereby notifies prospective buyer/lessee that (a) Broker will be acting as an agent of seller/lessor with the duty to represent seller/lessor's interest; (b) Broker will not be the agent of buyer/lessee; and (c) Information given to Broker will be disclosed to seller/lessor.

# AERIAL VIEW

# FOR LEASE MANUFACTURING/LIGHT ASSEMBLY/DISTRIBUTION

1340 N. Mosley | Wichita, KS



All information furnished regarding property for sales, rent, exchange or financing is from sources deemed reliable but no guarantee is made or responsibility assumed as to its accuracy or completeness and you are advised to make your own analysis and verification. Broker hereby notifies prospective buyer/lessee that (a) Broker will be acting as an agent of seller/lessor with the duty to represent seller/lessor's interest; (b) Broker will not be the agent of buyer/lessee; and (c) Information given to Broker will be disclosed to seller/lessor.