

# FOR LEASE

THE PARK SHELTON - OFFICE | MEDICAL | RETAIL



## 15 E. KIRBY STREET

DETROIT, MI 48202

### PROPERTY HIGHLIGHTS:

- First Floor Commercial Space Available
- Located in the Heart of Midtown - Woodward Avenue and Ferry Street
- Join Babo, Chartreuse, The Peacock Room, Wasabi, and The Carr Center
- Adjacent to Detroit Institute of Arts, Detroit Public Library, and the Detroit Historical Museum
- On-Site Public Parking Garage

### AVAILABLE SPACES - CONTACT BROKER FOR RATES

SPACE	SIZE (SF)	
Suite 102	1,663 SF	Medical Suite
Suite 103	227 SF	Immediate Availability
Suite 104	1,808 SF	Divisible
Woodward Retail	1,525 SF	Retail Suite

### FOR MORE INFORMATION PLEASE CONTACT:



**STEVE EISENSHTADT**  
Senior Vice President, Brokerage Services  
[steve.eisenshtadt@freg.com](mailto:steve.eisenshtadt@freg.com)

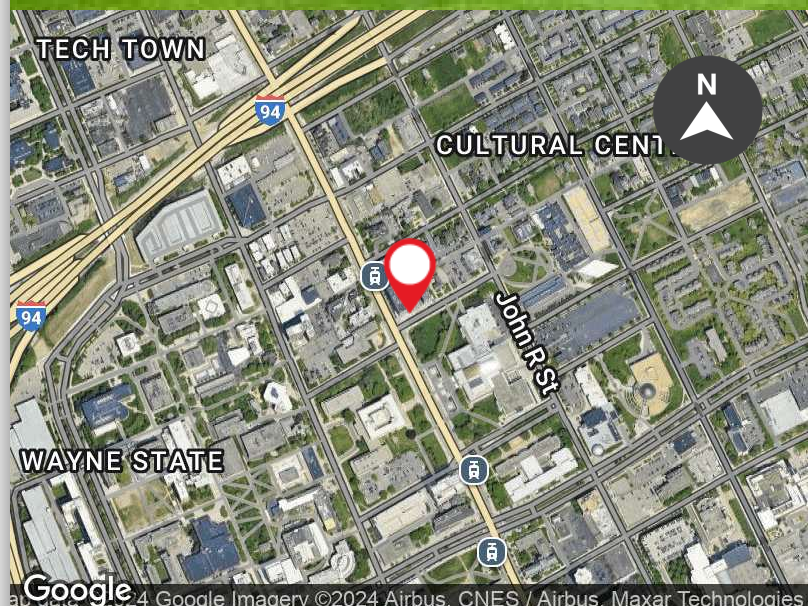


**ANDREW BOWER**  
Senior Associate, Advisory & Brokerage Services  
[andrew.bower@freg.com](mailto:andrew.bower@freg.com)

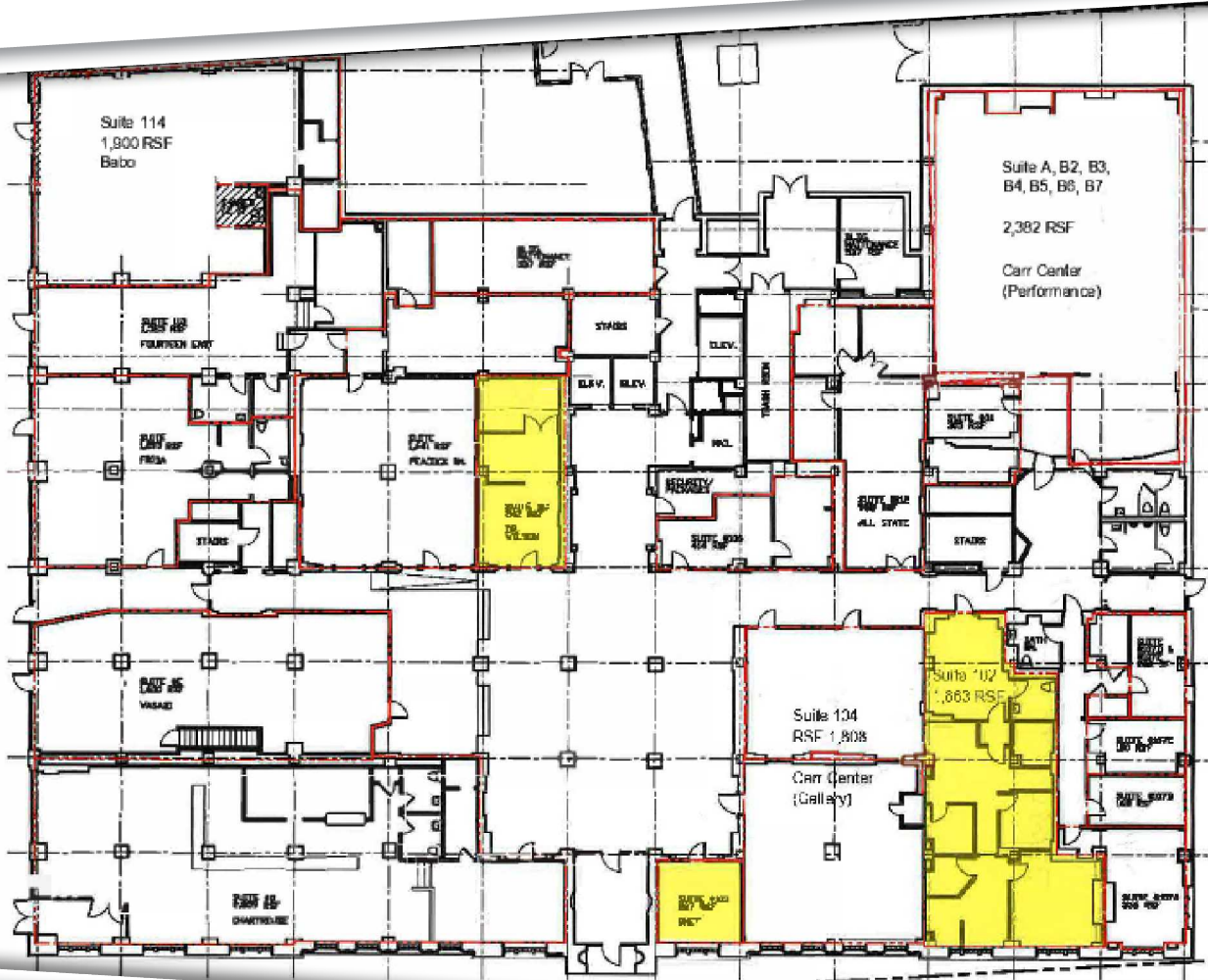
**248.324.2000**

eCODE **027**

The information provided herein along with any attachment(s) was obtained from sources believed to be reliable, however, Friedman Real Estate makes no guarantees, warranties, or representations as to the completeness or accuracy of such information and legal counsel is advised. All information provided is subject to verification and no liability for reliance on such information or errors or omissions is assumed. The presentation of this property is submitted subject to errors, omissions, change of price or conditions, prior sale or lease, or withdrawal without notice. Copyright © 2024 Friedman Real Estate. All rights reserved.



# THE PARK SHELTON - OFFICE | MEDICAL | RETAIL PROPERTY **FLOOR PLAN**



FOR MORE INFORMATION **PLEASE CONTACT:**



**STEVE EISENSHTADT**  
steve.eisenshtadt@freg.com



**ANDREW BOWER**  
andrew.bower@freg.com

# THE PARK SHELTON - OFFICE | MEDICAL | RETAIL LOCATION **OVERVIEW**



FOR MORE INFORMATION **PLEASE CONTACT:**



**STEVE EISENSHTADT**  
steve.eisenshtadt@freg.com



**ANDREW BOWER**  
andrew.bower@freg.com

**THE PARK SHELTON - OFFICE | MEDICAL | RETAIL**  
**PROPERTY PHOTOS**

