

# THE COMMONS



EXCELLENT CLASS A  
OFFICE SPACE AVAILABLE  
FOR LEASE IN VALENCIA

## 25152 SPRINGFIELD COURT

Suite 140	3,484 RSF
Suite 170	2,239 RSF
Suite 200	2,470 RSF
Suite 240	6,816 RSF
Suite 250	2,888 RSF
Suite 300*	8,106 RSF
Suite 320*	2,221 RSF

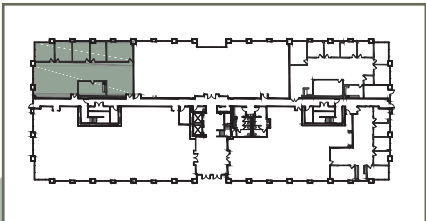
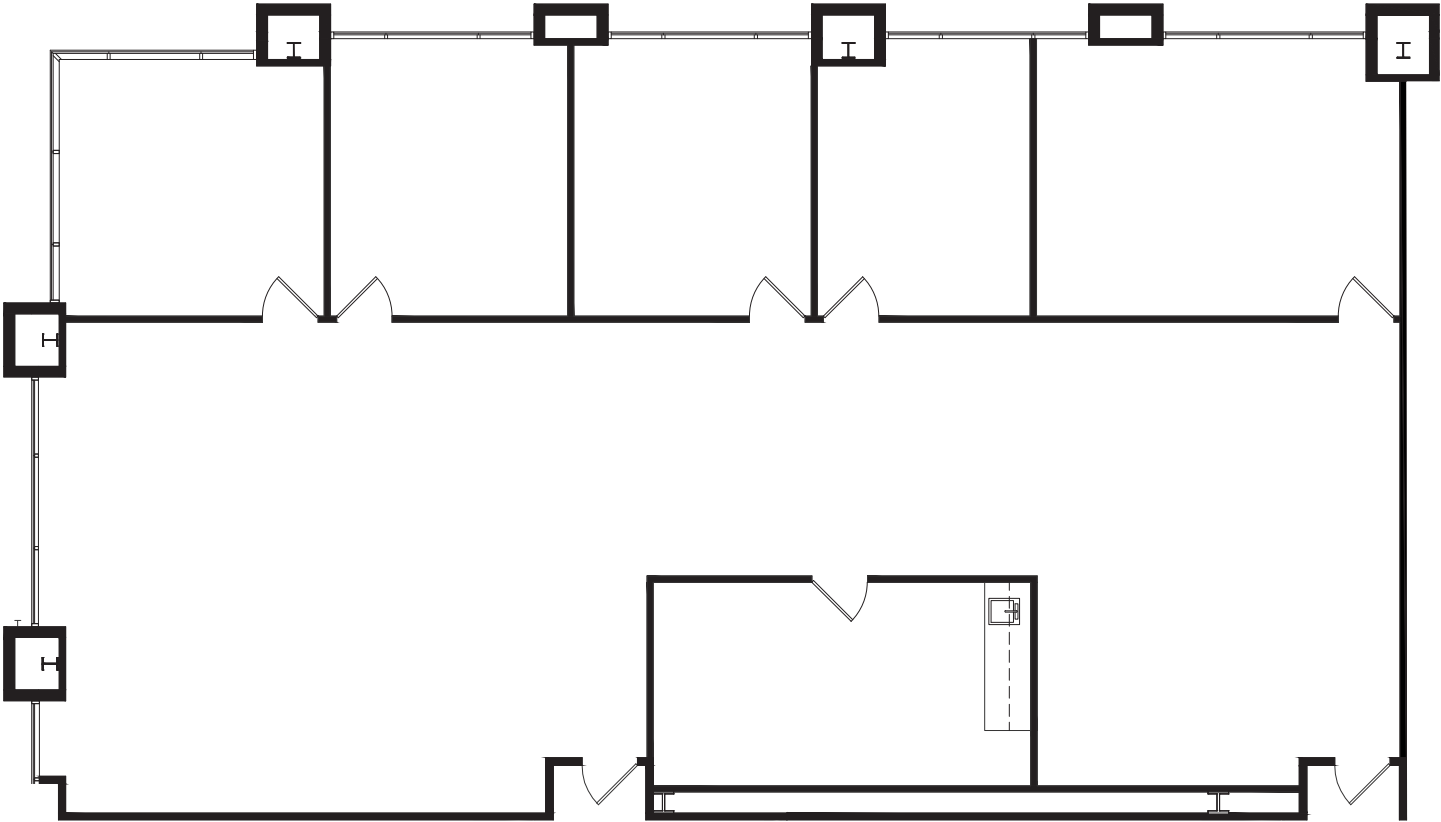
\*Suites contiguous to 10,327 RSF

## 25124 SPRINGFIELD COURT

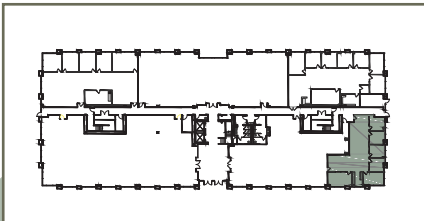
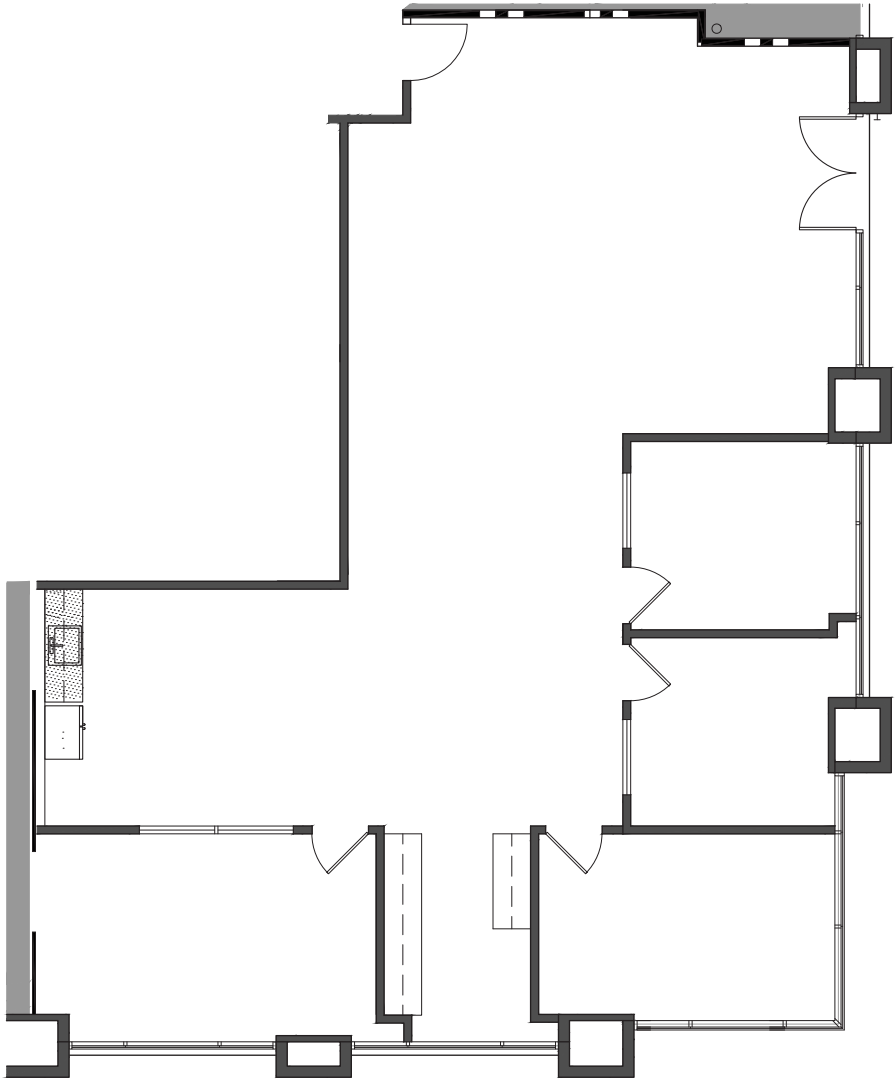
Suite 170	6,125 RSF
Suite 260	3,453 RSF



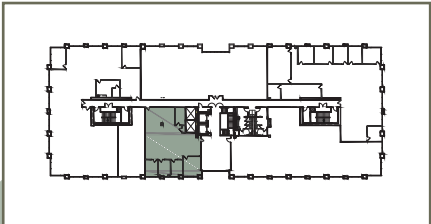
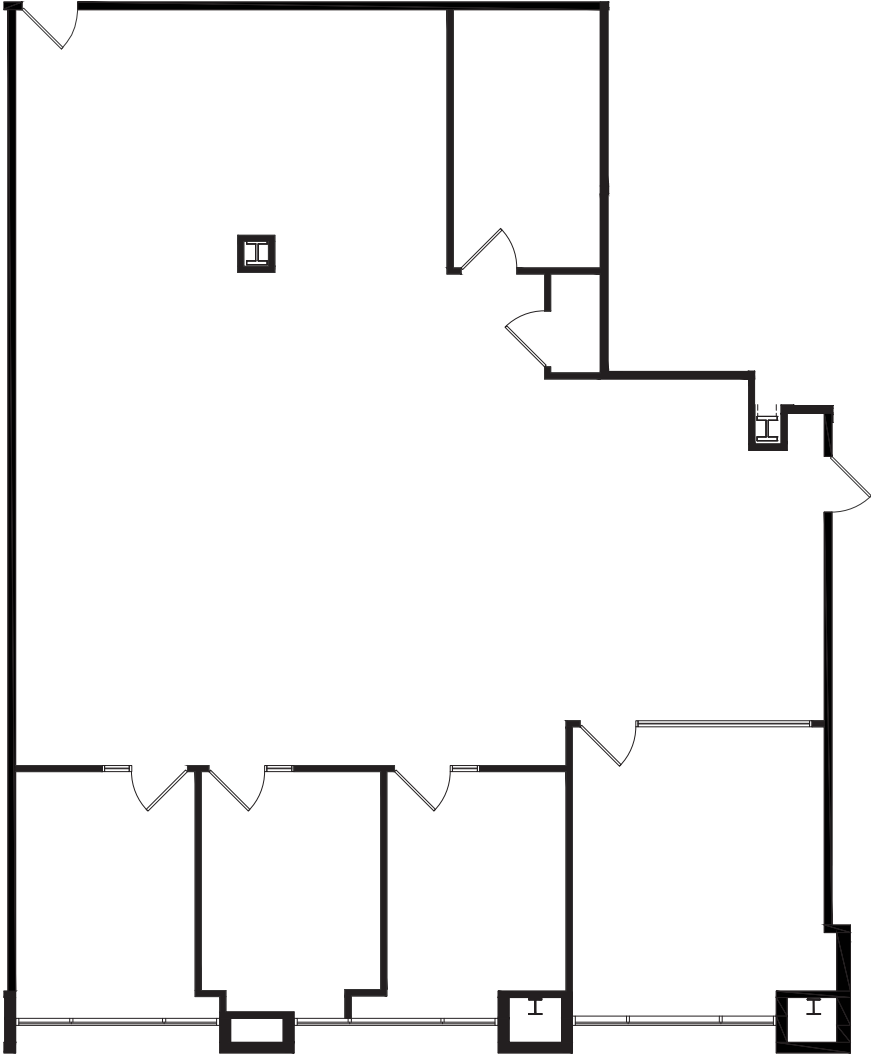
25152 SPRINGFIELD COURT  
SUITE 140 - 3,484 RSF



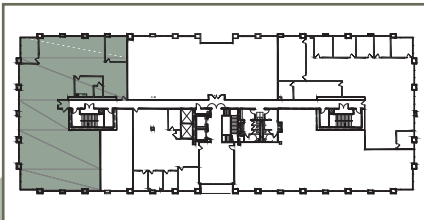
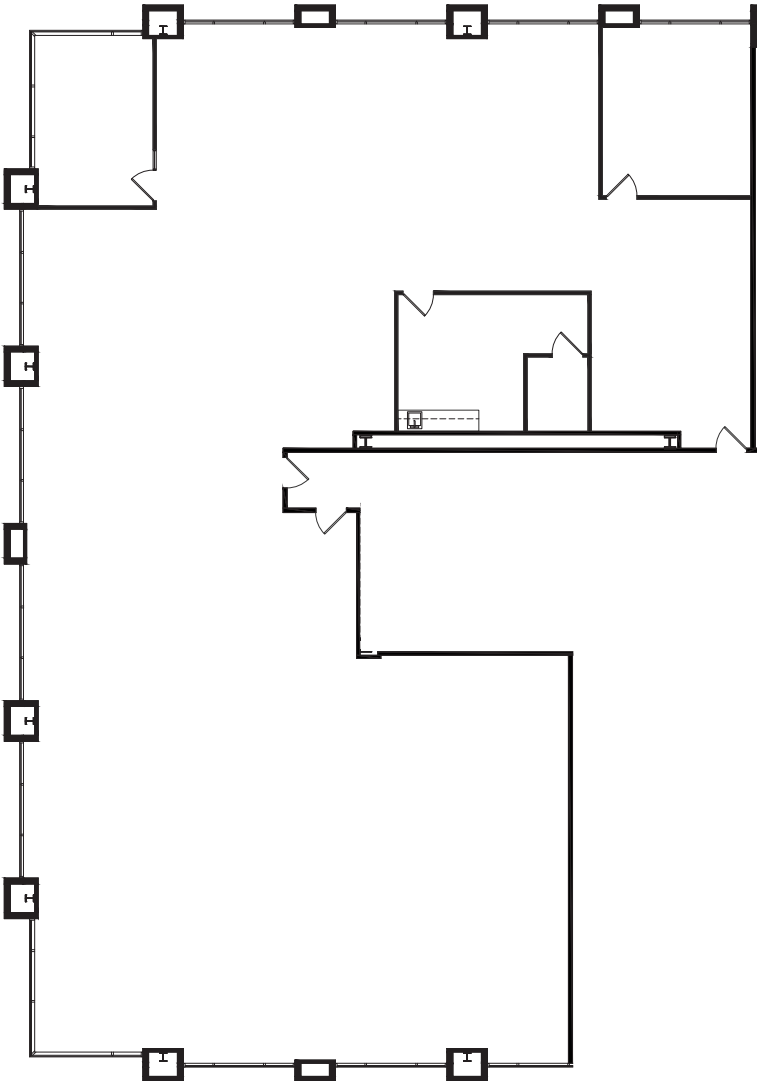
25152 SPRINGFIELD COURT  
SUITE 170 - 2,239 RSF



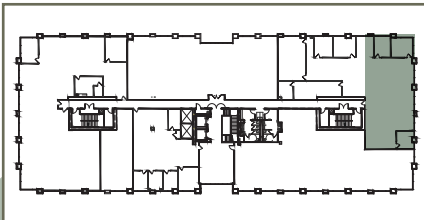
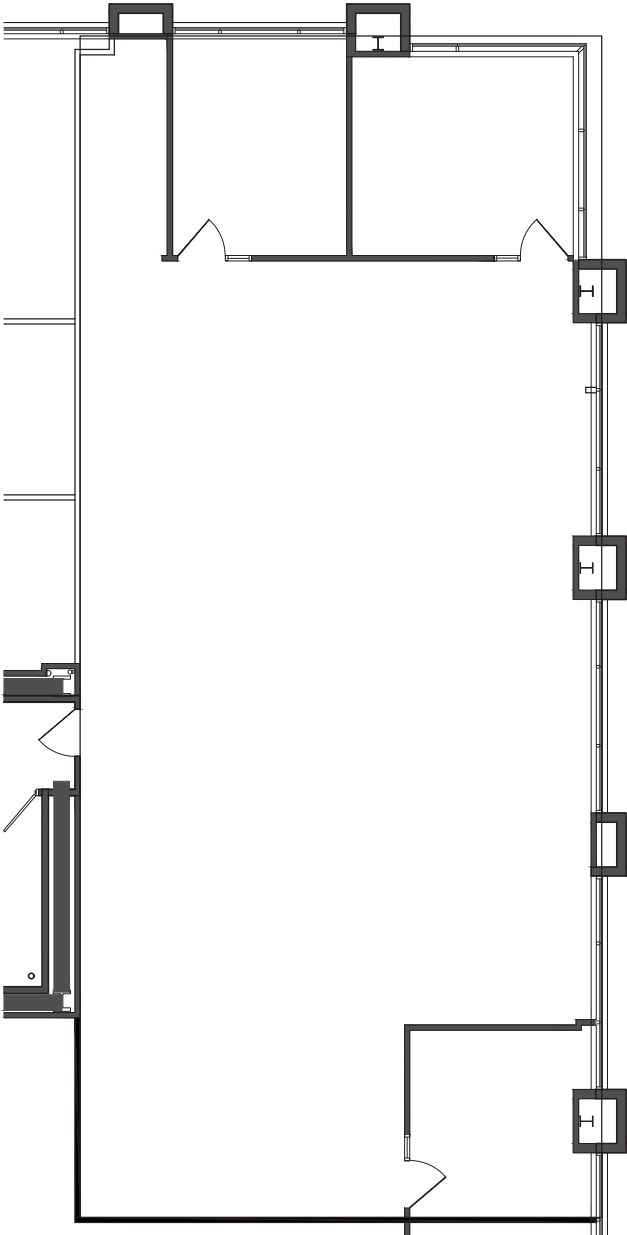
25152 SPRINGFIELD COURT  
SUITE 200 - 2,470 RSF



25152 SPRINGFIELD COURT  
SUITE 240 - 6,816 RSF



25152 SPRINGFIELD COURT  
SUITE 250 - 2,870 RSF

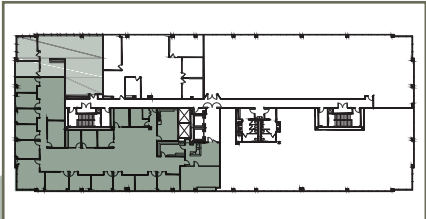
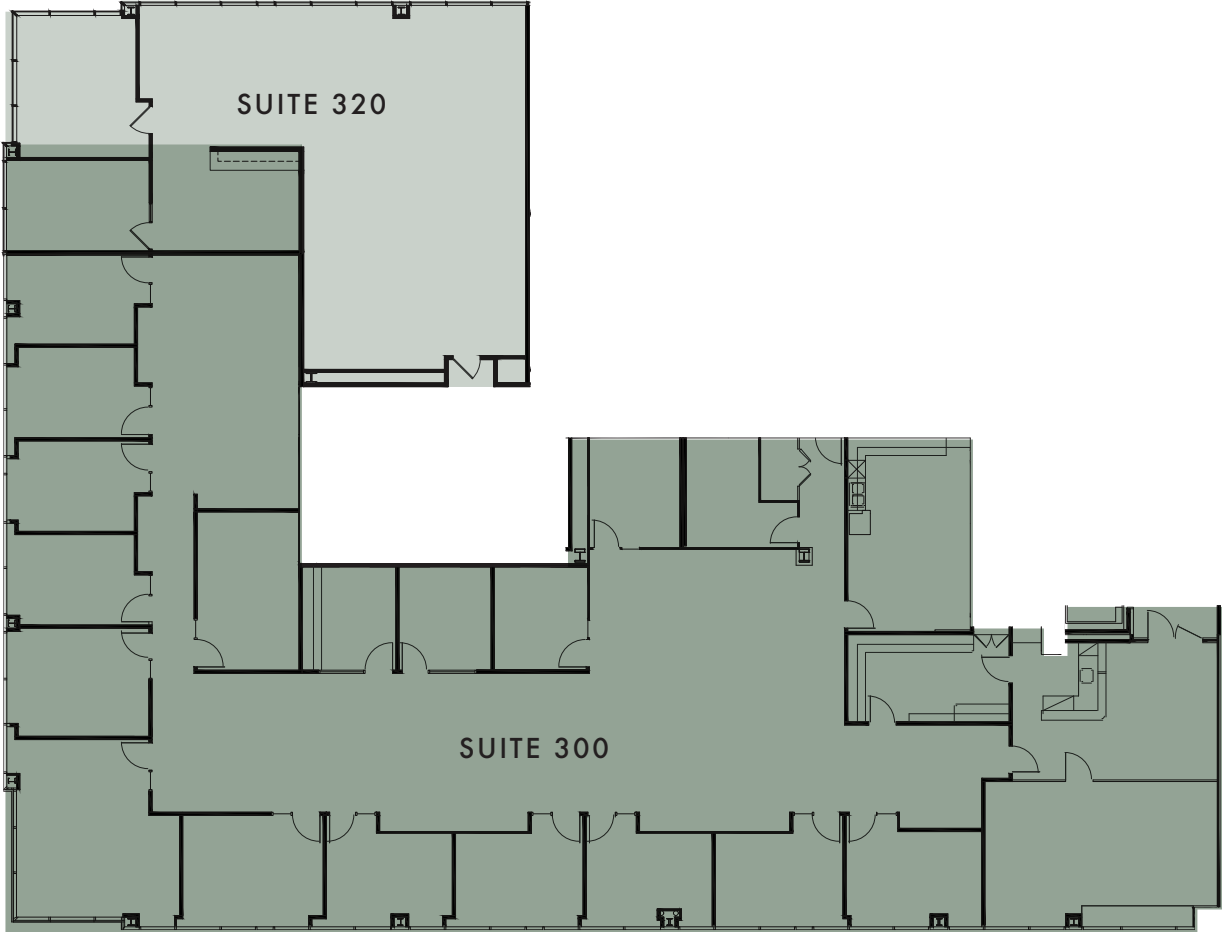


25152 SPRINGFIELD COURT

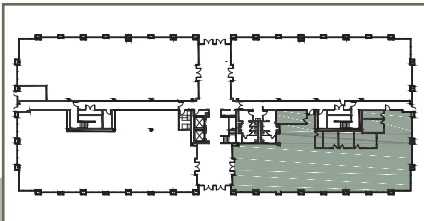
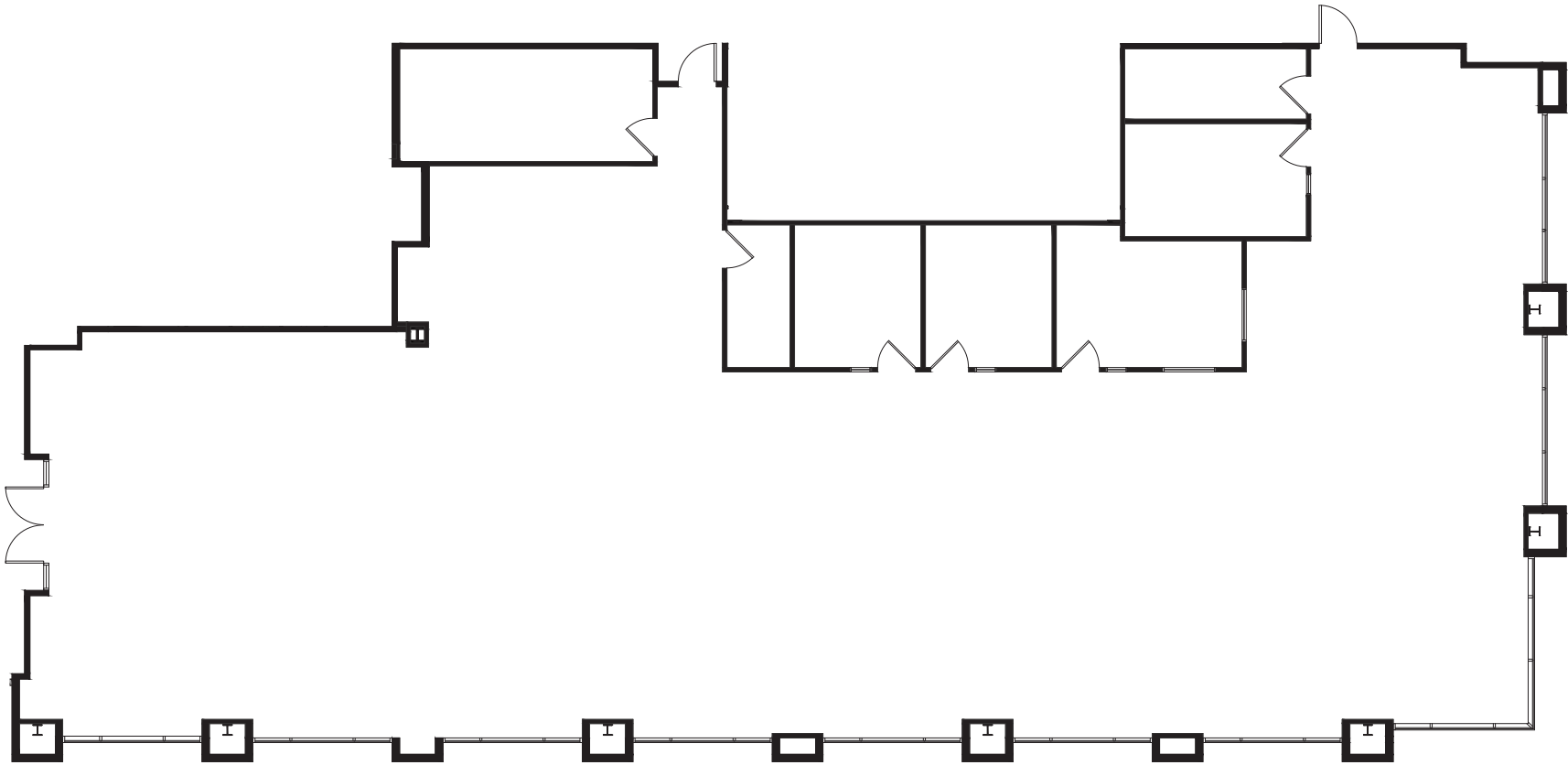
SUITE 300 - 8,106 RSF

SUITE 320 - 2,221 RSF

\*SUITES CONTIGUOUS TO 10,327 RSF

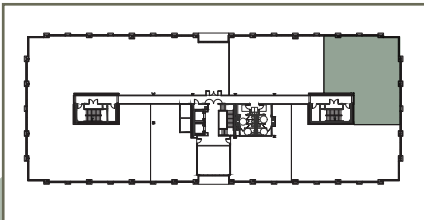
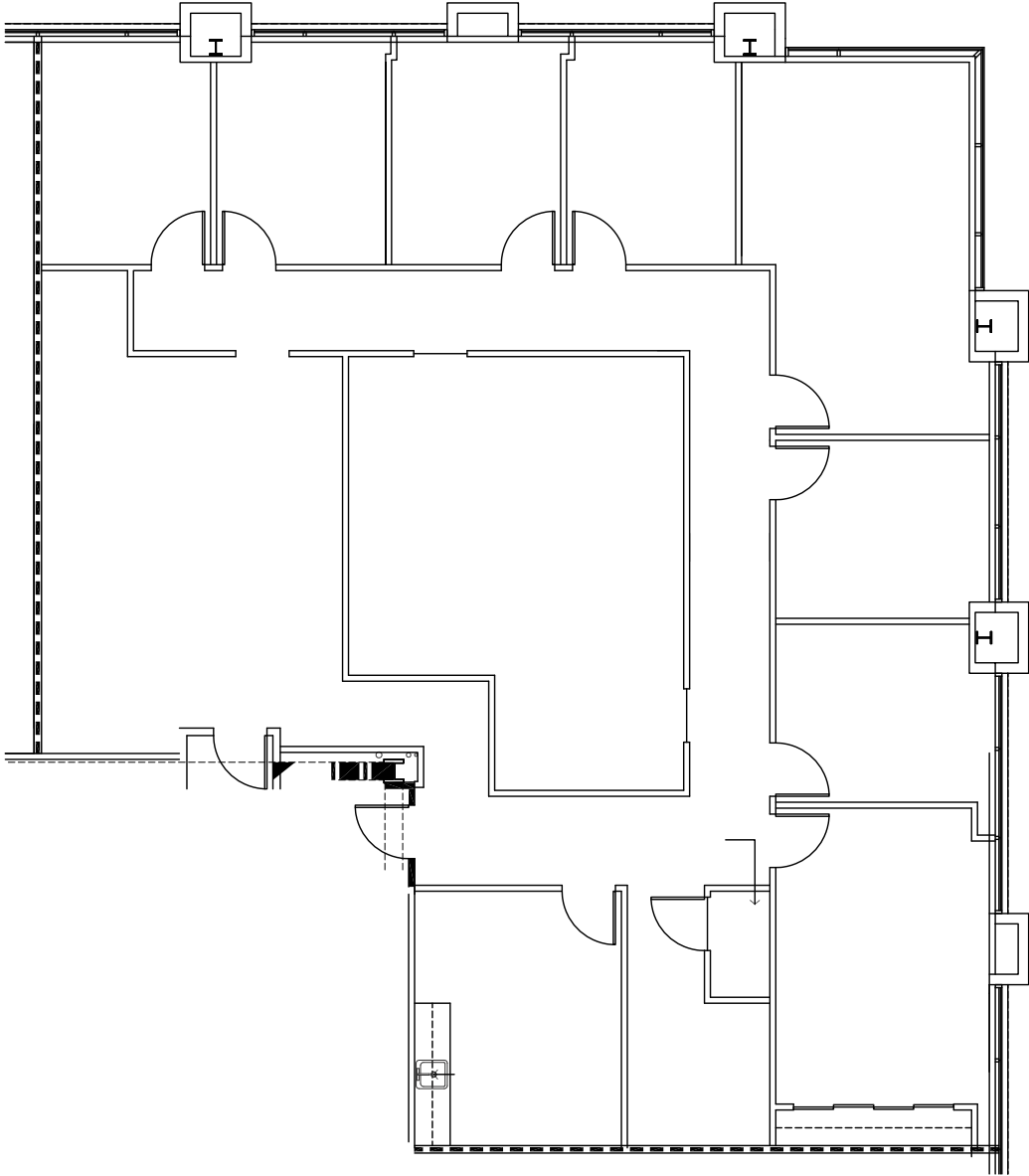


25124 SPRINGFIELD COURT  
SUITE 170 - 6,125 RSF





25124 SPRINGFIELD COURT  
SUITE 260 - 3,453 RSF



# CONTACT FOR leasing ►



## CBRE

**DOUG MARLOW**  
EXECUTIVE VICE PRESIDENT  
LIC# 00950434  
818 502 6707  
DOUG.MARLOW@CBRE.COM

**DAVID SOLOMON**  
SENIOR VICE PRESIDENT  
LIC# 01209699  
818 907 4628  
DAVID.SOLOMON@CBRE.COM

**JULIANA SAMPSON**  
SENIOR ASSOCIATE  
LIC# 01894878  
818 502 6772  
JULIANA.SAMPSON@CBRE.COM

