

## NORTHSIDE HOSPITAL CAMPUS

### Building 460

460 Northside Cherokee  
Boulevard  
Canton, GA 30115



## FEATURES

- Aggressive, below-market rental rate
- Available immediately
- Medical office with exam rooms, two physician offices, two clinical labs, plus two large labs
- Separate surgical suite with four pre-op/PACU bays
- Two large clinical stations
- Multiple supply closets for storage
- Natural light throughout office
- Furniture and equipment available
- Flexible sublease term at 3, 5, 10 years
- Master Lease expires October 31, 2038
- Located on the Canton Northside Hospital campus
- Direct access to the I-575 and Hwy 20 interchange
- Full-service cafeteria and gift shop on campus
- Major food retail amenities in the immediate area
- Can be subdivided to 5,136 SF or 3,551 RSF
- Total square footage available: 8,687 RSF
- Free covered parking in the parking deck
- Surface parking in front of the building
- Valet parking available

[Floor plan on page four](#)

For more information:

**Steve Morgan**

*Executive Managing Director*

t 404-926-1142

m 404-316-7089

[steven.morgan@nmrk.com](mailto:steven.morgan@nmrk.com)

3455 Peachtree Rd NE  
Suite 1800  
Atlanta, GA 30326  
t 770-552-2400

[nmrk.com](http://nmrk.com)

The information contained herein has been obtained from sources deemed reliable but has not been verified and no guarantee, warranty or representation, either express or implied, is made with respect to such information. Terms of sale or lease and availability are subject to change or withdrawal without notice.





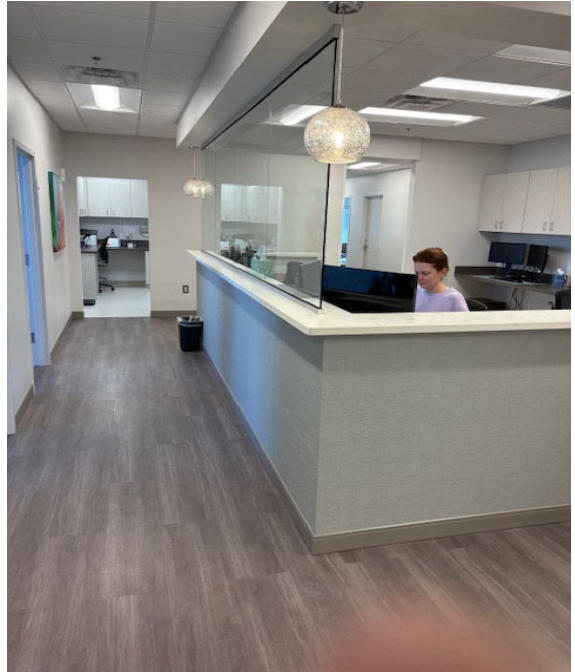
3455 Peachtree Rd NE  
Suite 1800  
Atlanta, GA 30326  
t 770-552-2400

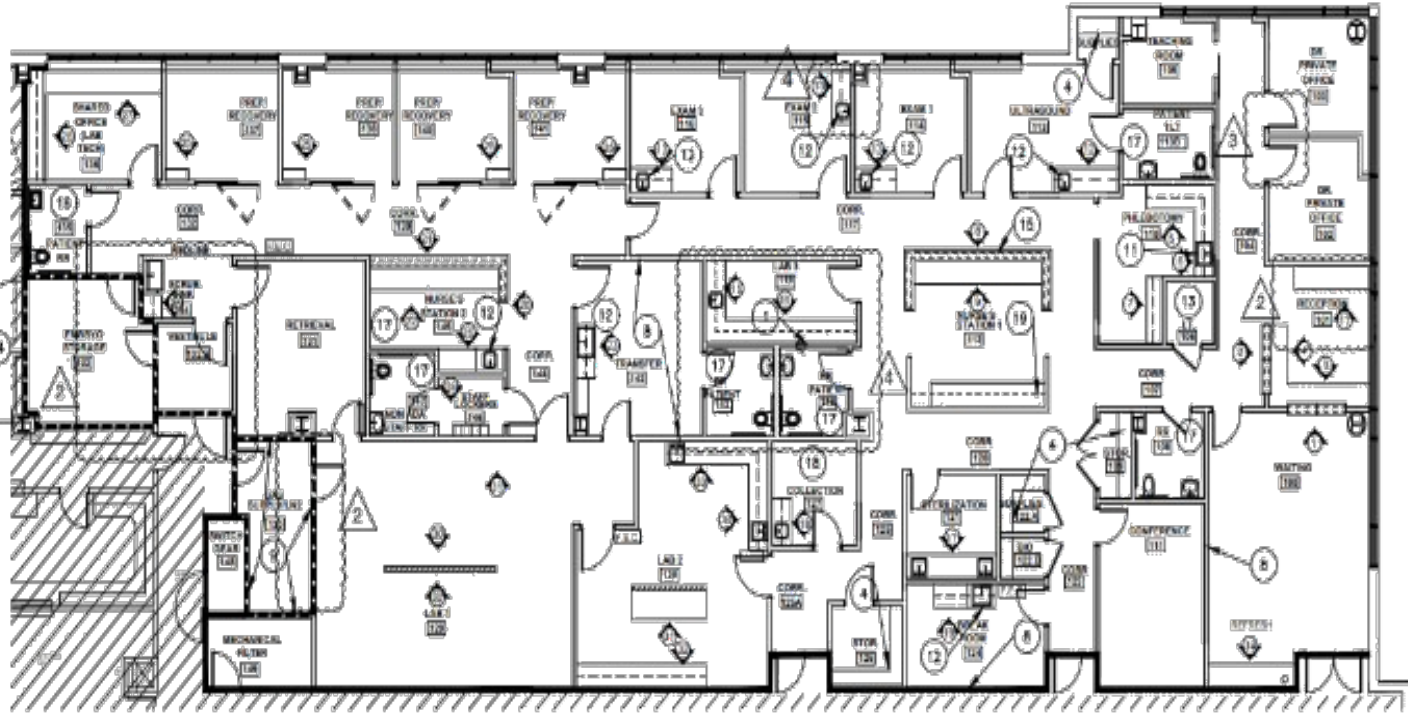
[nmrk.com](http://nmrk.com)

Steve Morgan  
Executive Managing Director  
t 404-926-1142  
m 404-316-7089  
[steven.morgan@nmrk.com](mailto:steven.morgan@nmrk.com)

The information contained herein has been obtained from sources deemed reliable but has not been verified and no guarantee, warranty or representation, either express or implied, is made with respect to such information. Terms of sale or lease and availability are subject to change or withdrawal without notice.







 PARTITION PLAN  
SCALE: 1/8"=1'-0"

3455 Peachtree Rd NE  
Suite 1800  
Atlanta, GA 30326  
t 770-552-2400

Steve Morgan  
Executive Managing Director  
t 404-926-1142  
m 404-316-7089  
[steven.morgan@nrmk.com](mailto:steven.morgan@nrmk.com)

[nrmk.com](http://nrmk.com)

The information contained herein has been obtained from sources deemed reliable but has not been verified and no guarantee, warranty or representation, either express or implied, is made with respect to such information. Terms of sale or lease and availability are subject to change or withdrawal without notice.

