



COMMERCIAL/RESIDENTIAL BUILDING

81 N. Mill Street, Kansas City, Kansas



SALE PRICE: \$300,000 | LEASE RATE: \$2,000/MO GROSS

DEMOGRAPHICS

	1 mile	3 miles	5 miles
Estimated Population	18,048	76,448	203,192
Avg. Household Income	\$55,850	\$77,567	\$82,525

- Great investment opportunity
- Perfect fit for owner/users
- Newly renovated residential space
- Potential space for ghost kitchen, small shop, or office



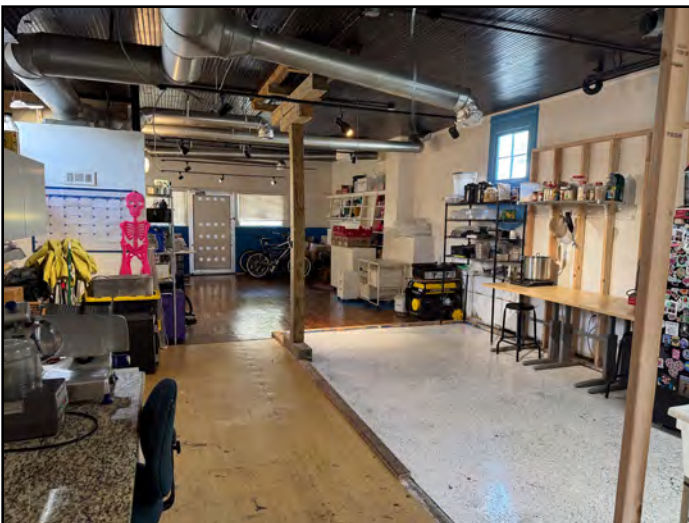
CLICK HERE TO VIEW MORE LISTING INFORMATION

[For More Information Contact:](#)

JOSH ROTHSCHILD | 816.412.7348 | jrothschild@blockandco.com

Exclusive Agent

PHOTOS



PHOTOS

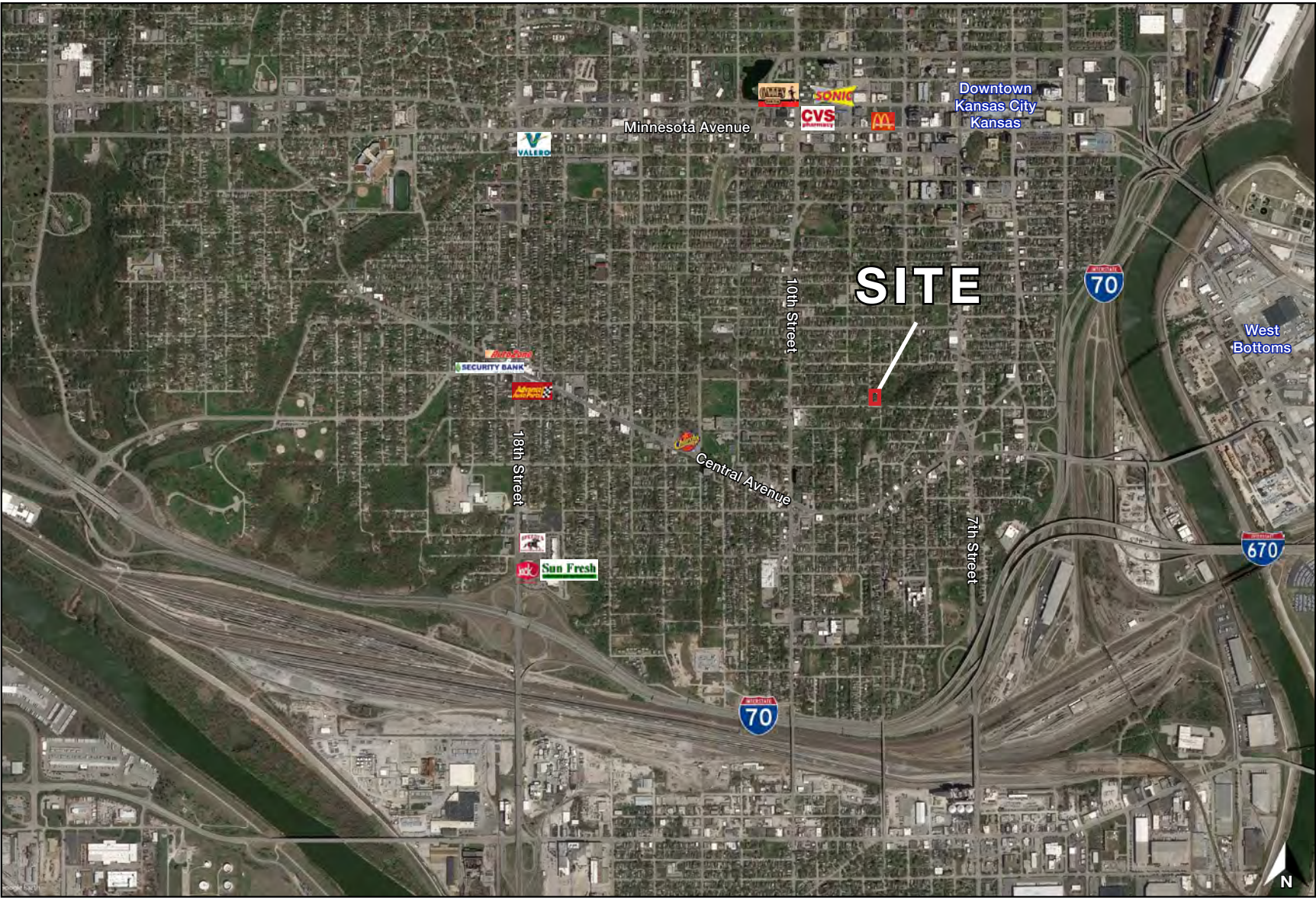




COMMERCIAL/RESIDENTIAL BUILDING

81 N. Mill Street, Kansas City, Kansas

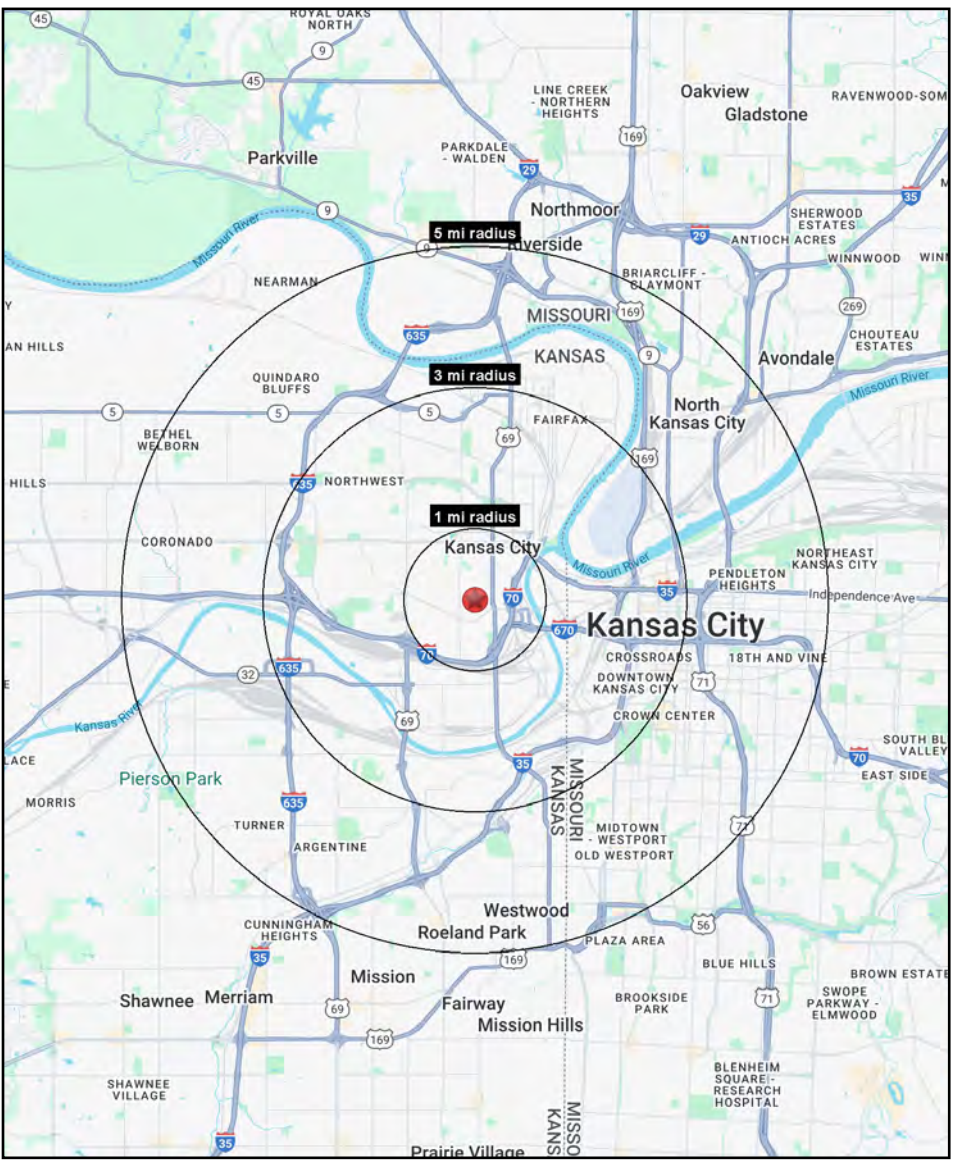
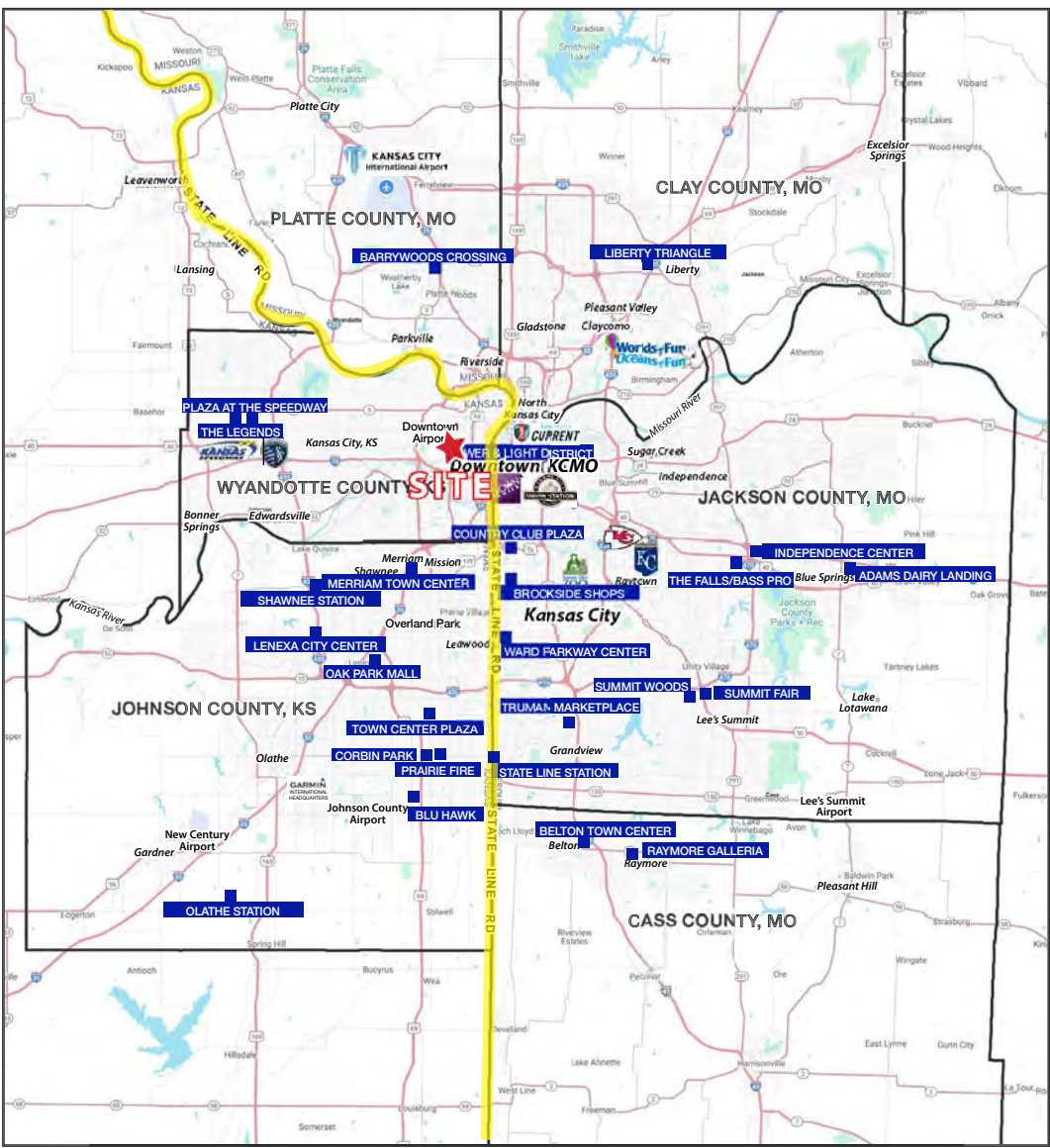
AERIAL





COMMERCIAL/RESIDENTIAL BUILDING

81 N. Mill Street, Kansas City, Kansas





COMMERCIAL/RESIDENTIAL BUILDING

81 N. Mill Street, Kansas City, Kansas

81 N Mill Street Kansas City, KS 66101	1 mi radius	3 mi radius	5 mi radius
Population			
2025 Estimated Population	18,048	76,448	203,192
2030 Projected Population	17,617	77,166	206,888
2020 Census Population	18,621	73,293	192,572
2010 Census Population	17,185	65,515	178,353
Projected Annual Growth 2025 to 2030	-0.5%	0.2%	0.4%
Historical Annual Growth 2010 to 2025	0.3%	1.1%	0.9%
2025 Median Age	31.1	31.2	32.7
Households			
2025 Estimated Households	5,843	31,205	91,420
2030 Projected Households	5,748	32,434	95,285
2020 Census Households	5,712	29,314	83,955
2010 Census Households	5,517	24,706	75,585
Projected Annual Growth 2025 to 2030	-0.3%	0.8%	0.8%
Historical Annual Growth 2010 to 2025	0.4%	1.8%	1.4%
Race and Ethnicity			
2025 Estimated White	35.2%	41.4%	49.4%
2025 Estimated Black or African American	15.3%	20.4%	22.5%
2025 Estimated Asian or Pacific Islander	6.7%	4.8%	4.7%
2025 Estimated American Indian or Native Alaskan	1.2%	1.1%	0.8%
2025 Estimated Other Races	41.6%	32.4%	22.7%
2025 Estimated Hispanic	50.2%	38.9%	26.7%
Income			
2025 Estimated Average Household Income	\$55,850	\$77,567	\$82,525
2025 Estimated Median Household Income	\$44,404	\$62,768	\$62,174
2025 Estimated Per Capita Income	\$18,497	\$31,837	\$37,331
Education (Age 25+)			
2025 Estimated Elementary (Grade Level 0 to 8)	19.9%	11.4%	7.3%
2025 Estimated Some High School (Grade Level 9 to 11)	13.2%	9.6%	7.7%
2025 Estimated High School Graduate	30.3%	26.1%	24.9%
2025 Estimated Some College	16.3%	17.3%	18.9%
2025 Estimated Associates Degree Only	6.3%	7.0%	6.5%
2025 Estimated Bachelors Degree Only	9.1%	18.6%	21.7%
2025 Estimated Graduate Degree	4.9%	10.0%	13.1%
Business			
2025 Estimated Total Businesses	582	5,192	13,336
2025 Estimated Total Employees	7,958	76,473	192,044
2025 Estimated Employee Population per Business	13.7	14.7	14.4
2025 Estimated Residential Population per Business	31.0	14.7	15.2

©2025, Sites USA, Chandler, Arizona, 480-491-1112 Demographic Source: Applied Geographic Solutions 5/2025, TIGER Geography - RS1