

Waterford Plaza Shopping Center

Luckys - CVS Anchored
Shopping Center

Property Highlights

- + ±1,500 SF Available
- + Anchored by Luckys, CVS and Kiddie Academy
- + Co- Tenants include Wells Fargo, Taco Bell, Chase, Orange Theory, 85 Degree Bakery plus many more
- + Parking Ratio 4.32/1000 parking
- + Signalized intersection and dedicated turn lane into the Center
- + Great Signage
- + Excellent visibility and traffic exposure from Capital Expressway

Contact

Marie Anderson

Vice President

+1 408 453 7468

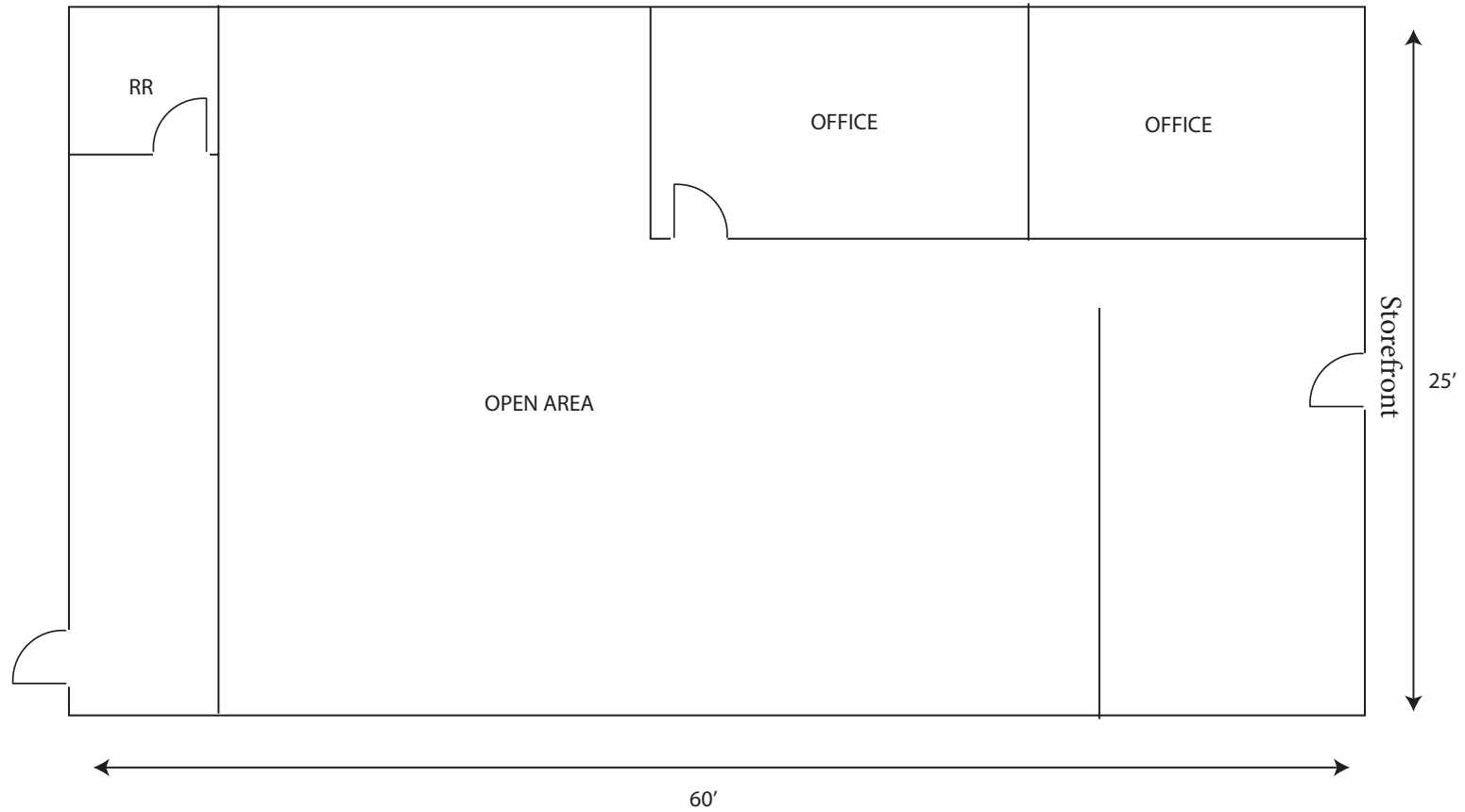
marie.anderson@cbre.com

Lic. 00919144

543 Capitol Expressway
San Jose, CA
www.cbre.com



Floor Plan

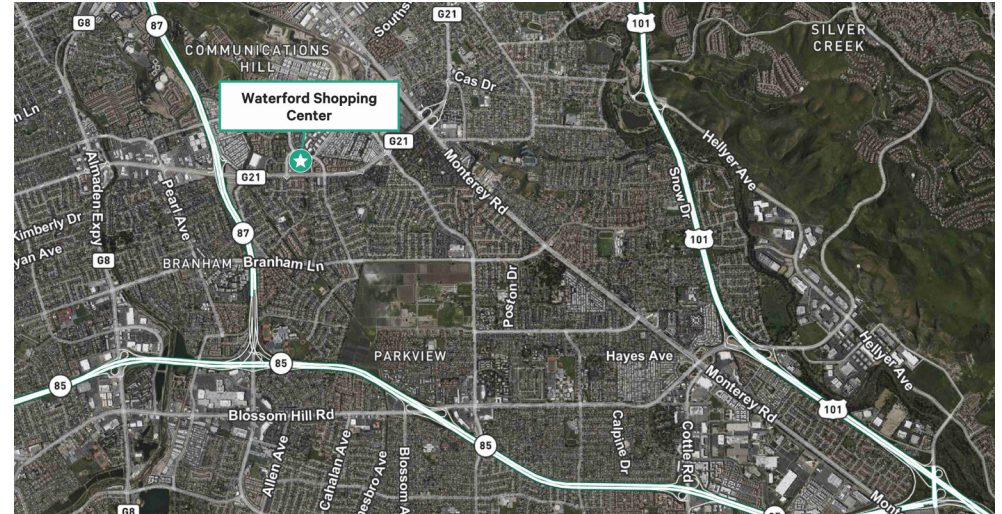


Property Photos



Demographics

2024 Demographics	1 Mile	3 Miles	5 Miles
2024 Population - Current Year Estimate	27,852	228,586	582,315
2029 Population - Five Year Projection	27,782	228,675	588,944
2020-2024 Annual Population Growth Rate	-0.30%	-0.79%	-0.44%
2024-2029 Annual Population Growth Rate	-0.05%	0.01%	0.23%
2024 Households - Current Year Estimate	9,905	75,172	190,762
2029 Households - Five Year Projection	10,019	76,197	196,334
2020-2024 Compound Annual Household Growth Rate	0.06%	-0.39%	-0.08%
2024-2029 Annual Household Growth Rate	0.23%	0.27%	0.58%
2024 Average Household Size	2.80	3.01	3.00
2024 Average Household Income	\$171,035	\$171,049	\$185,368
2029 Average Household Income	\$197,028	\$197,674	\$211,046
2024 Median Household Income	\$129,830	\$125,823	\$135,802
2029 Median Household Income	\$152,624	\$151,338	\$158,388
2024 Per Capita Income	\$60,956	\$56,255	\$60,687
2029 Per Capita Income	\$71,191	\$65,867	\$70,278
2024 Housing Units	10,583	79,578	204,199



Aerial Map





Contact

Marie Anderson
Vice President
+1 408 453 7468
marie.anderson@cbre.com
Lic. 00919144